



Record of Survey - SO 584087

Survey Number SO 584087
Surveyor Reference 5446W Curletts Road
Surveyor Alexander David John Liggett
Survey Firm Fox and Associates
Surveyor Declaration I Alexander David John Liggett, being a licensed cadastral surveyor, certify that--
(a) this dataset provided by me and its related survey are accurate, correct and in accordance with the Cadastral Survey Act 2002 and Cadastral Survey Rules 2021; and
(b) the survey was undertaken by me or under my personal direction.
Declared on 22 Feb 2023 02:19 PM

Survey Details

Dataset Description	Sections 1 & 2	Type	Survey
Purpose	Legalisation	Survey Class	Class A
Status	Approved as to Survey	Vertical Datum	None
Land District	Canterbury		
Meridional Circuit	Mount Pleasant 2000		

Survey Dates

Surveyed Date	11/10/2022	Certified Date	22/02/2023
Submitted Date	22/02/2023 14:19:36	Survey Approval Date	13/03/2023
Deposit Date			

Referenced Surveys

Survey Number	Land District	Bearing Correction
DP 67361	Canterbury	0°00'00"
DP 69641	Canterbury	0°00'00"
DP 64792	Canterbury	0°00'00"
SO 5053	Canterbury	0°00'00"
SO 9896	Canterbury	0°00'00"
SO 5321	Canterbury	0°00'00"
DP 10854	Canterbury	0°00'00"
SO 14203	Canterbury	-0°00'15"
SO 14707	Canterbury	-0°01'00"
DP 15178	Canterbury	0°00'00"
LT 63515	Canterbury	0°00'00"
DP 486149	Canterbury	0°00'00"
DP 489573	Canterbury	0°00'00"
DP 533233	Canterbury	0°00'00"

Territorial Authorities

Christchurch City

Comprised In

DI 82D/490 (part)



Record of Survey - SO 584087

Created Parcels

Parcels	Parcel Intent	Area	RT Reference
Section 1 Survey Office Plan 584087	Legalisation	0.0583 Ha	
Section 2 Survey Office Plan 584087	Fee Simple Title	0.0462 Ha	
Total Area		<u>0.1045 Ha</u>	

Mark and Vector

Survey Number SO 584087

Meridional Circuit Mount Pleasant 2000

From	To	Code	Bearing	Adpt Surv	Bearing Correction	Distance	Adpt Surv	Class
MA 1 DP 486149	MA 5 DP 489573	ob0	90°01'00" M			51.91 M		
MA 5 DP 489573	IT I LT 63515	ob1	171°57'00" M			24.93 M		
IT I LT 63515	MA 1 DP 486149	ob3	294°02'00" A	DP 486149	0°00'00"	60.66 A	DP 486149	
IT I LT 63515	IT 2 DP 533233	ob4	86°10'00" M			57.91 M		
IT 2 DP 533233	MA 5 DP 489573	ob8	288°45'50" A	DP 533233	0°00'00"	64.71 A	DP 533233	
IT I LT 63515	PEG 101 SO 584087	ob5	68°04'00" M			32.05 M		
IT I LT 63515	PEG 100 SO 584087	ob6	169°32'00" M			8.31 M		
IT I LT 63515	PEG (1) LT 63515	ob7	226°50'00" M			11.95 M		
IT 2 DP 533233	PEG 103 SO 584087	ob9	342°24'00" M			8.52 M		
IT 2 DP 533233	PEG (2) LT 63515	ob10	192°08'00" M			12.27 M		
IT 2 DP 533233	PEG 102 SO 584087	ob11	242°34'00" M			26.04 M		
IT 2 DP 533233	PEG 100 SO 584087	ob12	257°55'30" M			57.55 M		
MA 5 DP 489573	BD 5b DP 489573	ob2	359°47'00" A	DP 489573	0°00'00"	28.72 A	DP 489573	
BD 5b DP 489573	IT VI SO 14203	ob19	175°07'00" A	SO 14707	-0°01'00"	11.09 A	SO 14707	
IT VI SO 14203	IT II SO 14203	ob20	114°41'15" A	SO 14203	-0°00'15"	43.86 A	SO 14203	
IT II SO 14203	PEG (1) SO 14203	ob21	214°26'45" A	SO 14203	-0°00'15"	14.63 A	SO 14203	
PEG (2) SO 14203	PEG 103 SO 584087	ob24	89°58'40" A	LT 63515	0°00'00"	24.47 A	DP 69641	Class A
PEG 103 SO 584087	PEG (2) LT 63515	ob18	179°58'40" A	DP 533233	0°00'00"	20.12 A	DP 533233	Class A
PEG (2) LT 63515	PEG 102 SO 584087	ob25	269°58'40" C			20.53 C		Class A
PEG 102 SO 584087	PEG 100 SO 584087	ob26	269°58'40" C			33.16 C		Class A
PEG (1) LT 63515	PEG (3) LT 63515	ob16	9°35'10" A	LT 63515	0°00'00"	7.94 A	LT 63515	
PEG 100 SO 584087	PEG (1) SO 5053	ob15	9°35'10" A	LT 63515	0°00'00"	20.40 C		Class A
PEG (1) SO 5053	PEG (1) DP 10854	ob22	89°55'00" A	DP 10854	0°00'00"	5.09 A	DP 10854	Class A
PEG (1) DP 10854	PEG (1) SO 14203	ob23	89°58'00" A	SO 14203	-0°00'15"	18.90 A	SO 14203	Class A
PEG (1) SO 14203	PEG 101 SO 584087	ob27	89°58'40" A	DP 67361	0°00'00"	0.82 C		Class A
PEG 101 SO 584087	PEG (2) SO 14203	ob13	89°58'40" A	DP 67361	0°00'00"	0.99 C		Class A

Mark and Vector

Survey Number SO 584087

Meridional Circuit Mount Pleasant 2000

From	To	Code	Bearing	Adpt Surv	Bearing Correction	Distance	Adpt Surv	Class
PEG 101 SO 584087	PEG 102 SO 584087	ob14	166°12'00"	C		20.70 C		Class A
PEG (1) LT 63515	UNMK (1) SO 5053	ob17	89°54'15"	A LT 63515	0°00'00"	7.14 A	SO 5053	
UNMK (1) SO 5053	PEG 100 SO 584087	ob28	89°58'40"	A LT 63515	0°00'00"	3.07 C		

Mark Name	Mark Condition	Description
IT 2 DP 533233		d0.2
IT I LT 63515		d0.4
MA 1 DP 486149		fl in kerb
MA 5 DP 489573		fl in kerb
PEG (1) LT 63515		0.1E of Post
PEG 101 SO 584087		0.2 S of Chain Fence
PEG 102 SO 584087		0.6 N of chain fence
PEG 103 SO 584087		OP I DP 533233 straightened 1.5 S of Building
UNMK (1) SO 5053		0.6 N of chain fence
PEG (1) DP 10854	Searched For and Not Found	
PEG (1) SO 14203	Searched For and Not Found	
PEG (1) SO 5053	Searched For and Not Found	
PEG (2) SO 14203	Searched For and Not Found	
PEG (3) LT 63515	Searched For and Not Found	

*** End of Report ***

Area Schedule

Land Registration District

Canterbury

Plan Number

SO 584087

Territorial Authority (the Council)

Christchurch City



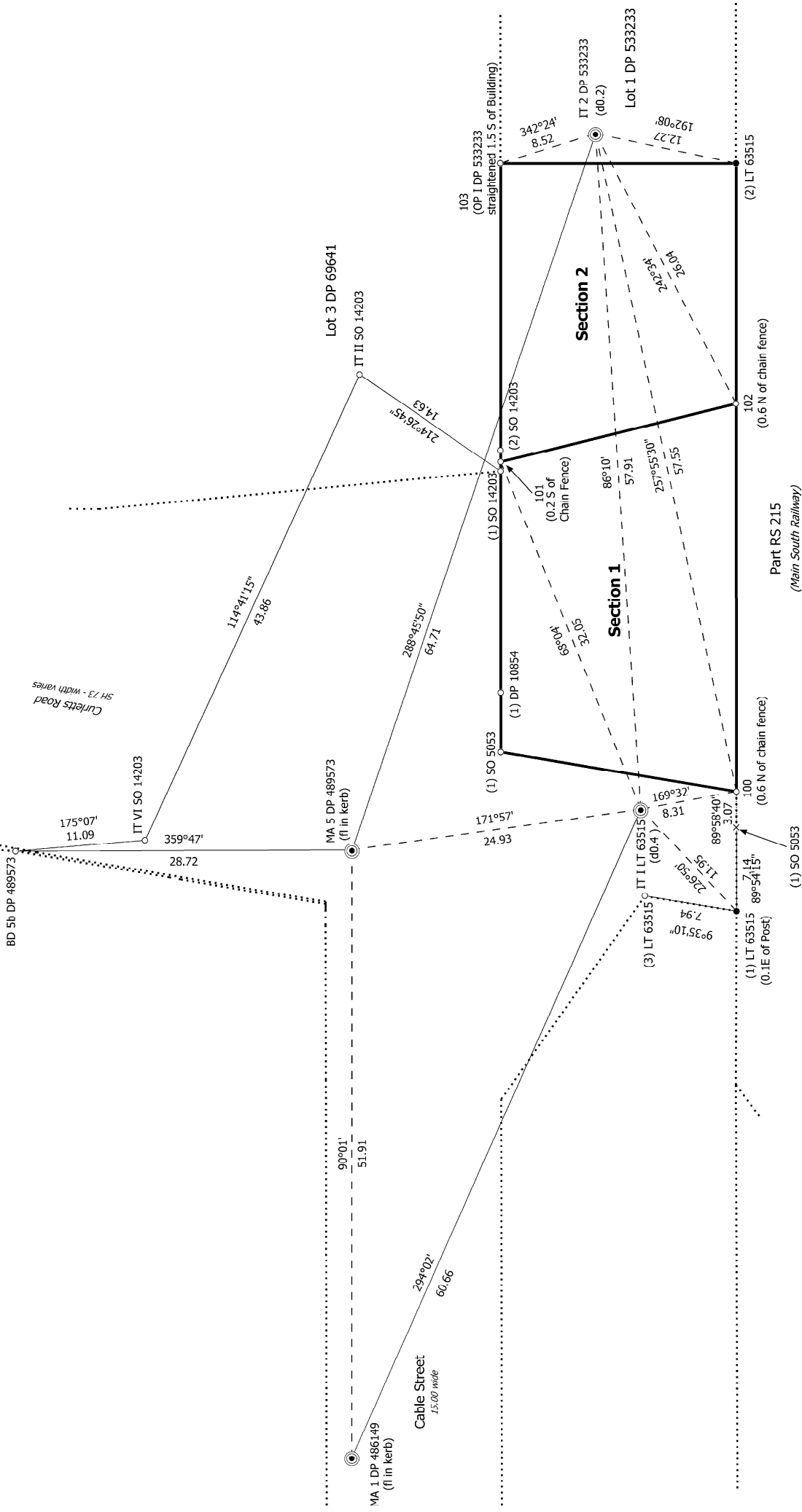
195 Peterborough St, Christchurch 8013
PO Box 895, Christchurch 8140

0800 FOX SURVEY
0800 369 787

info@foxsurvey.co.nz
www.foxsurvey.co.nz

<i>Land to be Acquired for Road</i>			
Shown	Description	Comprised In	Area
Section 1	Pt RS 215	Deeds 82D/490 (part) Registered Proprietor: T. Acland	0.0583 Ha

Diag. A



S 1/1

Sections 1 & 2

Surveyor: Alexander David John Liggitt
 Firm: Fox and Associates
 Date of Survey: 11/10/2022

Record of Survey
 SO 584087
 Approved on: 13/03/2023



Diag. A

Curletts Road - SH 73
Legal Road - width varies

Cable Street
Legal Road - 15.00 wide

Lot 3 DP 69641

Section 1
0.0583Ha

9°35'10"

20.40

89°58'40"

18.90

0.82

89°58'40"

0.99

89°58'40"

24.47

(25.46)

Section 2
0.0462Ha

(Part RS 215)
Deeds 82D/490 (part)

166°12'

20.70

269°58'40"

20.53

179°58'40"

20.12

Lot 1 DP 533233

10.06
wide

Part RS 215

T 1/1

Land District: Canterbury

Digitally Generated Plan

Generated on: 13/03/2023 3:13pm Page 6 of 6

Sections 1 & 2

Surveyor: Alexander David John Liggitt
Firm: Fox and Associates
Date of Survey: 11/10/2022

Record of Survey
SO 584087
Approved on: 13/03/2023