



Record of Survey - SO 582634

Survey Number SO 582634
Surveyor Reference 2455 41Hooker
Surveyor Brent Richard George
Survey Firm Mainland Surveying Limited
Surveyor Declaration I Brent Richard George, being a licensed cadastral surveyor, certify that--
(a) this dataset provided by me and its related survey are accurate, correct and in accordance with the Cadastral Survey Act 2002 and Cadastral Survey Rules 2021; and
(b) the survey was undertaken by me or under my personal direction.
Declared on 27 Oct 2022 01:36 PM

Survey Details

Dataset Description	Boundary Reinstatement - Lot 214 DP 19547		
Purpose	Simple Boundary Reinstatement		
Status	Registered	Type	Survey
Land District	Canterbury	Survey Class	Class A
Meridional Circuit	Mount Pleasant 2000	Vertical Datum	None

Survey Dates

Surveyed Date	14/09/2022	Certified Date	27/10/2022
Submitted Date	27/10/2022 13:36:43	Survey Approval Date	27/10/2022
Deposit Date			

Referenced Surveys

Survey Number	Land District	Bearing Correction
DP 20331	Canterbury	0°00'00"
DP 19547	Canterbury	0°00'00"
DP 486949	Canterbury	0°00'00"
DP 518515	Canterbury	0°00'00"

Territorial Authorities

Christchurch City

Comprised In

RT CB16F/1006



Mark and Vector

Survey Number SO 582634
 Meridional Circuit Mount Pleasant 2000

From	To	Code	Bearing	Adpt Surv	Bearing Correction	Distance	Adpt Surv	Class
IT 5 DP 486949	NAIL 2 DP 486949	ob0	25°36'00" M			44.23 M		
NAIL 2 DP 486949	NAIL 4 DP 486949	ob2	227°49'00" M			15.69 M		
NAIL 4 DP 486949	NAIL 6 DP 486949	ob4	194°59'00" M			32.19 M		
NAIL 6 DP 486949	IT 5 DP 486949	ob5	25°36'00" M			1.94 M		
NAIL 2 DP 486949	NAIL 1 DP 486949	ob3	22°58'00" M			58.35 M		
NAIL 1 DP 486949	IR II DP 444743	ob7	4°25'00" A DP 486949		0°00'00"	8.86 A DP 486949		
IR II DP 444743	IS IIIa DP 19547	ob8	204°24'10" A DP 486949		0°00'00"	49.96 A DP 486949		
IS IIIa DP 19547	IT IV DP 19547	ob9	204°23'30" A DP 19547		0°00'00"	32.39 A DP 19547		
IT IV DP 19547	IS I DP 20331	ob10	186°45'40" A DP 20331		0°00'00"	1.83 A DP 20331		
IS I DP 20331	IS VI DP 19547	ob12	186°45'40" A DP 20331		0°00'00"	36.18 A DP 20331		
IS VI DP 19547	NAIL 6 DP 486949	ob13	330°12'00" M			9.83 M		
NAIL 6 DP 486949	IT VII DP 19547	ob6	263°57'00" A DP 486949		0°00'00"	35.54 A DP 486949		
IT VII DP 19547	IS VI DP 19547	ob15	96°45'40" A DP 19547		0°00'00"	40.52 A DP 19547		
IT IV DP 19547	PEG (1) DP 19547	ob11	103°58'00" A DP 19547		0°00'00"	10.12 A DP 19547		
IS VI DP 19547	PEG (2) DP 19547	ob14	60°23'00" A DP 19547		0°00'00"	9.48 A DP 19547		
PEG (2) DP 19547	PEG (1) DP 19547	ob17	11°13'00" A DP 19547		0°00'00"	31.20 A DP 19547		
PEG (2) DP 19547	PEG A SO 582634	ob18	8°45'00" A DP 19547		0°00'00"	13.90 A DP 19547		
PEG (1) DP 19547	PEG (4) DP 19547	ob16	105°59'00" A DP 19547		0°00'00"	47.09 A DP 19547		
PEG (4) DP 19547	PEG (5) DP 19547	ob19	195°43'10" A DP 19547		0°00'00"	9.98 A DP 19547		
PEG (5) DP 19547	PEG B SO 582634	ob20	195°43'10" A DP 19547		0°00'00"	3.62 A DP 19547		
PEG B SO 582634	PEG A SO 582634	ob21	281°25'00" R DP 19547		0°00'00"	46.43 R DP 19547		Class A
IT 5 DP 486949	IS 1 SO 582634	ob1	30°26'00" M			29.27 M		
IS 1 SO 582634	NAIL 1 DP 486949	ob22	21°34'40" M			73.52 M		
IS 1 SO 582634	NAIL 2 DP 486949	ob23	16°18'00" M			15.26 M		
IS 1 SO 582634	IS VI DP 19547	ob24	196°53'30" M			37.12 M		
IS 1 SO 582634	PEG A SO 582634	ob25	181°26'00" M			17.12 M		



Mark and Vector

Survey Number SO 582634
Meridional Circuit Mount Pleasant 2000

From	To	Code	Bearing	Adpt Surv	Bearing Correction	Distance	Adpt Surv	Class
IS 1 SO 582634	PEG B SO 582634	ob26	120°15'30" M			52.22M		

Mark and Vector

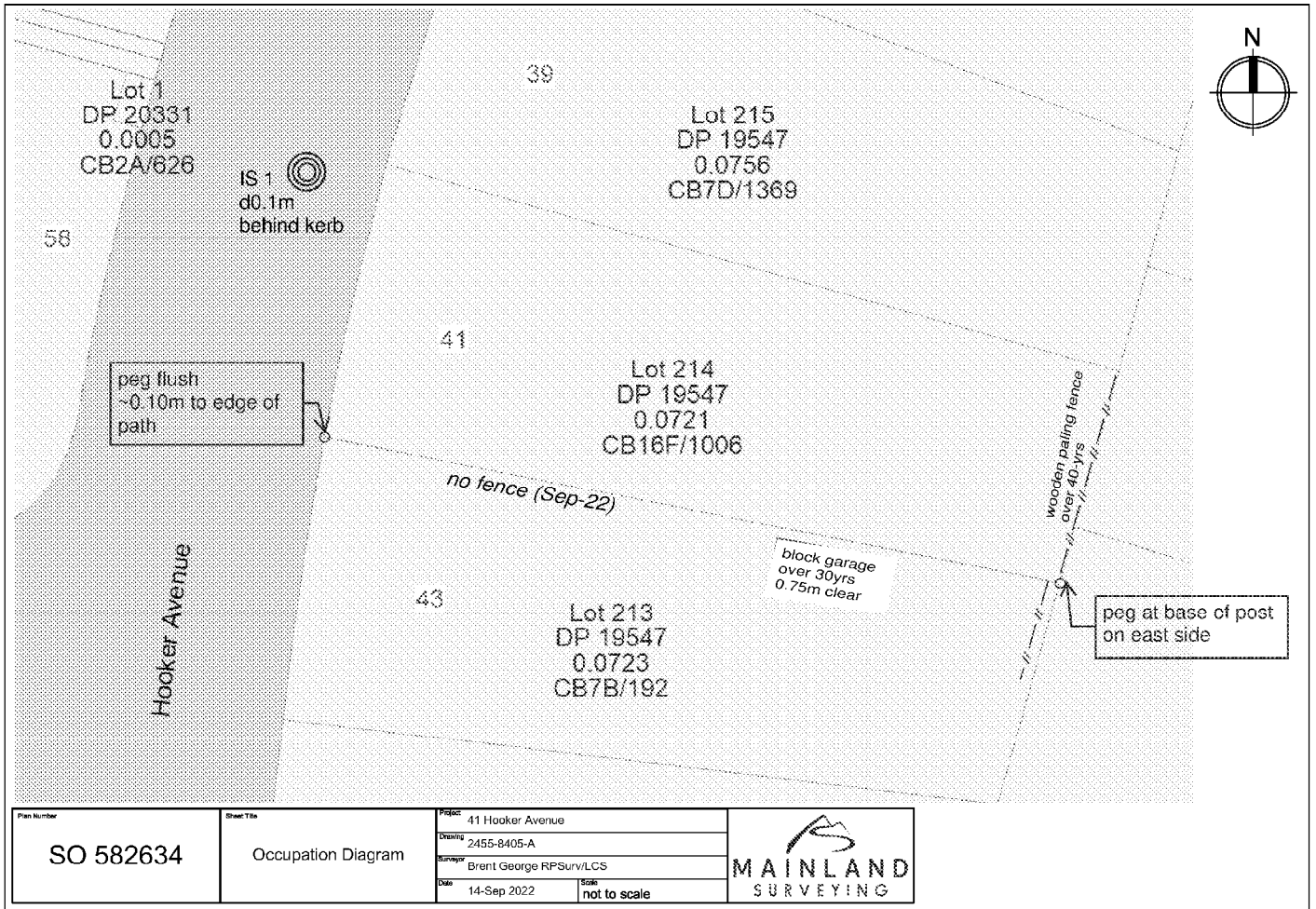
Survey Number SO 582634
Meridional Circuit Mount Pleasant 2000

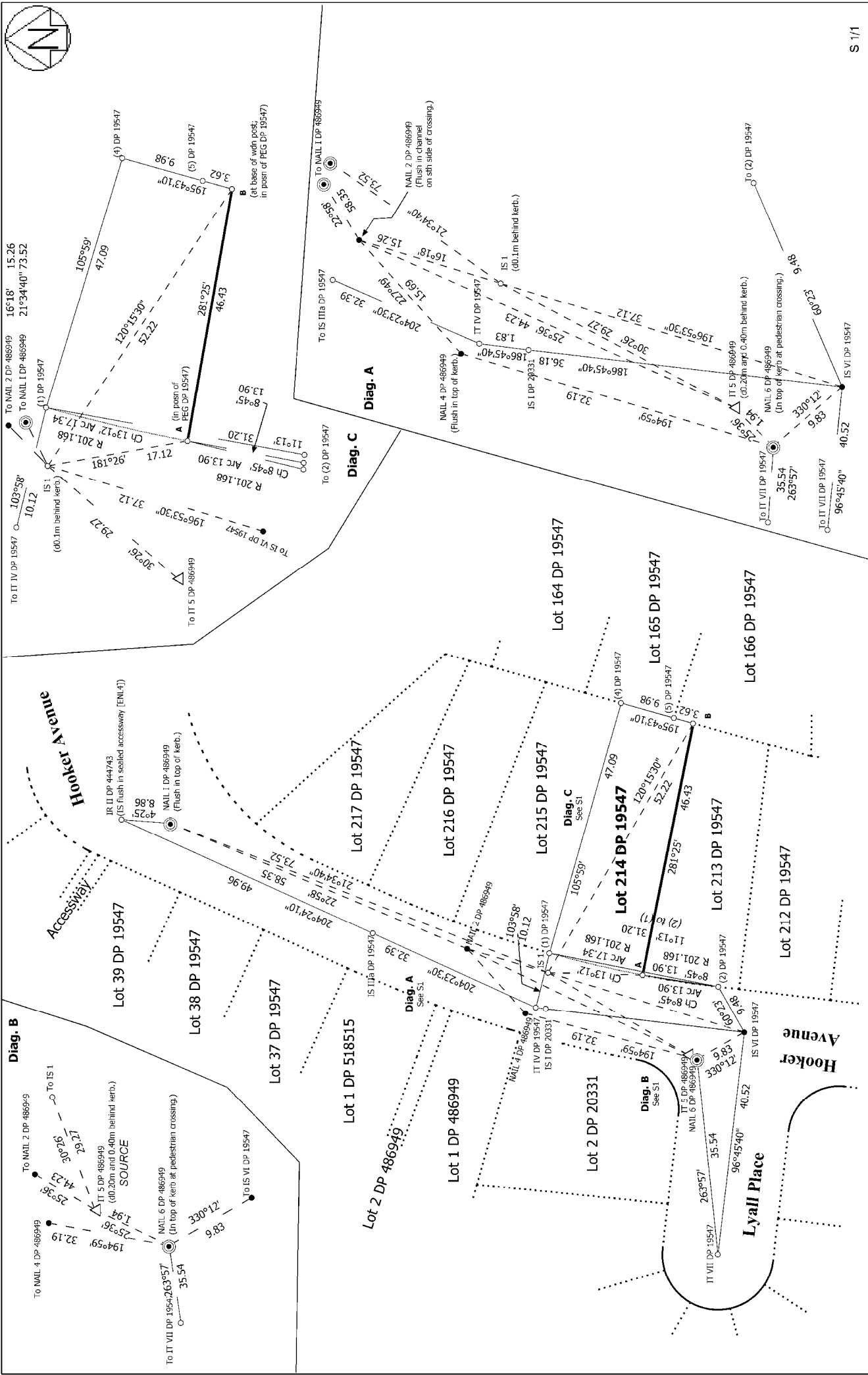
From	To	Code	Chord Bearing	Arc Length	Radius	Adpt Surv
PEG (2) DP 19547	PEG A SO 582634	ob27	8°45'00"	13.90	201.168	A DP 19547
PEG A SO 582634	PEG (1) DP 19547	ob28	13°12'00"	17.34	201.168	C

Mark Name	Mark Condition	Description
IR II DP 444743		IS flush in sealed accessway [ENL4]
IS 1 SO 582634		d0.1m behind kerb.
IT 5 DP 486949		d0.20m and 0.40m behind kerb.
NAIL 2 DP 486949		Flush in channel on sth side of crossing.
NAIL 4 DP 486949		Flush in top of kerb.
NAIL 6 DP 486949		In top of kerb at pedestrian crossing.
NAIL 1 DP 486949		Flush in top of kerb.
PEG A SO 582634		in posn of PEG DP 19547
PEG B SO 582634		at base of wdn post; in posn of PEG DP 19547

*** End of Report ***

Occupation Diagram





<p>Land District: Canterbury</p> <p>Digitally Generated Plan</p> <p>Generated on: 27/10/2022 4:20pm Page 6 of 6</p>	<p>Boundary Reinstatement - Lot 214 DP 19547</p>	<p>Surveyor: Brent Richard George Firm: Mainland Surveying Limited Date of Survey: 14/09/2022</p>	<p>Record of Survey SO 582634 Approved on: 27/10/2022</p>
--	---	---	--