



# Record of Survey - DP 568359

---

**Survey Number** DP 568359  
**Surveyor Reference** 46550.01 Te Pae Easements  
**Surveyor** Alexander David John Liggett  
**Survey Firm** Fox and Associates  
**Surveyor Declaration** I Alexander David John Liggett, being a licensed cadastral surveyor, certify that--  
(a) this dataset provided by me and its related survey are accurate, correct and in accordance with the Cadastral Survey Act 2002 and Cadastral Survey Rules 2021; and  
(b) the survey was undertaken by me or under my personal direction.  
Declared on 20 Jan 2022 02:09 PM

---

## Survey Details

**Dataset Description** Proposed Easements over Lot 1 DP 507669  
**Purpose** Easement  
**Status** Deposited **Type** Parcels without Survey Information  
**Land District** Canterbury **Survey Class** Class A  
**Meridional Circuit** Mount Pleasant 2000 **Vertical Datum** New Zealand Vertical Datum 2016

---

## Survey Dates

**Surveyed Date** 23/06/2021 **Certified Date** 20/01/2022  
**Submitted Date** 20/01/2022 14:09:20 **Survey Approval Date** 20/01/2022  
**Deposit Date** 07/10/2022

---

## Referenced Surveys

Survey Number	Land District	Bearing Correction
DP 10350	Canterbury	0°00'00"
DP 6768	Canterbury	0°00'00"
SO 16483	Canterbury	0°00'00"
DP 81433	Canterbury	0°00'00"
SO 484615	Canterbury	0°00'00"
SO 485006	Canterbury	0°00'00"
DP 507669	Canterbury	0°00'00"
DP 512327	Canterbury	0°00'00"

---

## Territorial Authorities

Christchurch City

---

## Comprised In

RT 773876

---

## Created Parcels

Parcels	Parcel Intent	Area	RT Reference
Area A Deposited Plan 568359	Easement		
Area B Deposited Plan 568359	Easement		
Height-Limited Area C Deposited Plan 568359	Easement		
Height-Limited Area D Deposited Plan 568359	Easement		

---



# Record of Survey - DP 568359

---

## Created Parcels

Parcels	Parcel Intent	Area	RT Reference
Height-Limited Area E Deposited Plan 568359	Easement		
Height-Limited Area F Deposited Plan 568359	Easement		
Height-Limited Area G Deposited Plan 568359	Easement		
Height-Limited Area H Deposited Plan 568359	Easement		
<b>Total Area</b>		<hr/> 0.0000 Ha	

# Mark and Vector

Survey Number DP 568359

Meridional Circuit Mount Pleasant 2000

From	To	Code	Bearing	Adpt Surv	Bearing Correction	Distance	Adpt Surv	Class
PEG (1) DP 6768	PEG 1b DP 370769	ob1	269°51'30"	A SO 484615	0°00'00"	1.17 A	DP 507669	Class A
PEG 1b DP 370769	UNMK 18 DP 568359	ob2	269°51'30"	A SO 484615	0°00'00"	1.21 C		
UNMK 18 DP 568359	UNMK 2 DP 568359	ob39	269°51'30"	A SO 484615	0°00'00"	1.83 C		Class A
UNMK 2 DP 568359	UNMK 17 DP 568359	ob19	269°51'30"	A SO 484615	0°00'00"	2.63 C		Class A
UNMK 17 DP 568359	UNMK 1 DP 568359	ob37	269°51'30"	A SO 484615	0°00'00"	0.57 C		Class A
UNMK 1 DP 568359	BS 47 DP 507669	ob17	269°51'30"	A SO 484615	0°00'00"	75.54 C		
PIN 4 SO 484615	UNMK 59 DP 568359	ob4	198°55'40"	A SO 485006	0°00'00"	15.06 C		
UNMK 59 DP 568359	UNMK 60 DP 568359	ob81	198°55'40"	A SO 485006	0°00'00"	2.00 C		Class A
UNMK 60 DP 568359	DISK 50 DP 507669	ob83	198°55'40"	A SO 485006	0°00'00"	0.94 C		
DISK 50 DP 507669	BS 57 DP 507669	ob5	107°40'00"	A DP 507669	0°00'00"	21.25 A	DP 507669	
BS 57 DP 507669	UNMK 59 DP 507669	ob6	133°55'00"	A DP 507669	0°00'00"	15.23 A	DP 507669	
UNMK 59 DP 507669	PEG 60 DP 507669	ob7	96°28'00"	A DP 507669	0°00'00"	48.15 A	DP 507669	
PEG 60 DP 507669	PEG 61 DP 507669	ob8	103°47'00"	A DP 507669	0°00'00"	32.37 A	DP 507669	
PEG 61 DP 507669	PEG 8 SO 484615	ob9	178°43'00"	A DP 507669	0°00'00"	3.03 A	DP 507669	
PEG 8 SO 484615	UNMK 58 DP 568359	ob10	89°49'05"	A DP 10350	0°00'00"	5.47 C		
UNMK 58 DP 568359	UNMK 57 DP 568359	ob79	89°49'05"	A DP 10350	0°00'00"	2.20 C		Class A
UNMK 57 DP 568359	DISK 49 DP 507669	ob78	89°49'05"	A DP 10350	0°00'00"	9.07 C		
DISK 49 DP 507669	PEG 58 DP 507669	ob11	12°09'00"	A DP 507669	0°00'00"	60.30 A	DP 507669	
PEG 58 DP 507669	BS 48 DP 507669	ob12	90°00'00"	A DP 507669	0°00'00"	21.21 A	DP 507669	
BS 48 DP 507669	UNMK 15 DP 568359	ob0	359°49'05"	A SO 484615	0°00'00"	1.98 C		
UNMK 15 DP 568359	UNMK 16 DP 568359	ob34	359°49'05"	A SO 484615	0°00'00"	4.01 C		Class A
UNMK 16 DP 568359	PEG (3) DP 6768	ob35	359°49'05"	A SO 484615	0°00'00"	77.61 C		
PEG (3) DP 6768	IR B2 DP 512327	ob13	269°31'30"	A DP 6768	0°00'00"	10.76 A	DP 6768	

# Mark and Vector

Survey Number DP 568359

Meridional Circuit Mount Pleasant 2000

From	To	Code	Bearing	Adpt Surv	Bearing Correction	Distance	Adpt Surv	Class
IR B2 DP 512327	NAIL (2) DP 6768	ob14	269°46'00"	A DP 6768	0°00'00"	8.39 A	DP 6768	
NAIL (2) DP 6768	PEG (1) DP 6768	ob15	359°49'05"	A DP 6768	0°00'00"	9.29 A	SO 484615	Class A
PEG 1b DP 370769	UNMK 74 DP 568359	ob3	179°49'05"	C		9.26 C		Class A
UNMK 74 DP 568359	NAIL (2) DP 6768	ob16	89°46'00"	C		1.17 C		Class A
UNMK 1 DP 568359	UNMK 69 DP 568359	ob18	180°00'00"	C		7.72 C		Class A
UNMK 69 DP 568359	UNMK 3 DP 568359	ob92	180°00'00"	C		13.84 C		Class A
UNMK 3 DP 568359	UNMK 70 DP 568359	ob20	90°00'00"	C		7.57 C		Class A
UNMK 70 DP 568359	UNMK 4 DP 568359	ob94	90°00'00"	C		2.85 C		Class A
UNMK 4 DP 568359	UNMK 5 DP 568359	ob21	180°00'00"	C		1.65 C		Class A
UNMK 5 DP 568359	UNMK 6 DP 568359	ob22	90°00'00"	C		7.88 C		Class A
UNMK 6 DP 568359	UNMK 7 DP 568359	ob23	0°00'00"	C		13.31 C		Class A
UNMK 7 DP 568359	UNMK 8 DP 568359	ob24	270°00'00"	C		7.88 C		Class A
UNMK 8 DP 568359	UNMK 9 DP 568359	ob25	180°00'00"	C		3.26 C		Class A
UNMK 9 DP 568359	UNMK 71 DP 568359	ob26	270°00'00"	C		5.24 C		Class A
UNMK 71 DP 568359	UNMK 10 DP 568359	ob96	270°00'00"	C		1.98 C		Class A
UNMK 10 DP 568359	UNMK 2 DP 568359	ob28	0°00'00"	C		13.17 C		Class A
UNMK 9 DP 568359	UNMK 12 DP 568359	ob27	180°00'00"	C		2.60 C		
UNMK 12 DP 568359	UNMK 11 DP 568359	ob30	180°00'00"	C		3.20 C		Class A
UNMK 11 DP 568359	UNMK 4 DP 568359	ob29	180°00'00"	C		2.60 C		
UNMK 12 DP 568359	UNMK 72 DP 568359	ob31	270°00'00"	C		4.94 C		Class A
UNMK 72 DP 568359	UNMK 13 DP 568359	ob98	270°00'00"	C		2.26 C		Class A
UNMK 13 DP 568359	UNMK 14 DP 568359	ob32	180°00'00"	C		3.20 C		Class A
UNMK 14 DP 568359	UNMK 73 DP 568359	ob33	90°00'00"	C		3.41 C		Class A
UNMK 73 DP 568359	UNMK 11 DP 568359	ob100	90°00'00"	C		3.79 C		Class A

# Mark and Vector

Survey Number DP 568359

Meridional Circuit Mount Pleasant 2000

From	To	Code	Bearing	Adpt Surv	Bearing Correction	Distance	Adpt Surv	Class
UNMK 17 DP 568359	UNMK 19 DP 568359	ob38	178°55'00"	C		3.65 C		Class A
UNMK 19 DP 568359	UNMK 69 DP 568359	ob40	188°55'00"	C		4.12 C		Class A
UNMK 69 DP 568359	UNMK 20 DP 568359	ob93	188°55'00"	C		4.08 C		Class A
UNMK 20 DP 568359	UNMK 21 DP 568359	ob41	204°28'00"	C		9.22 C		Class A
UNMK 21 DP 568359	UNMK 22 DP 568359	ob42	182°08'00"	C		2.96 C		Class A
UNMK 22 DP 568359	UNMK 23 DP 568359	ob43	167°33'00"	C		4.47 C		Class A
UNMK 23 DP 568359	UNMK 24 DP 568359	ob44	134°06'00"	C		4.63 C		Class A
UNMK 24 DP 568359	UNMK 25 DP 568359	ob45	150°40'00"	C		1.02 C		Class A
UNMK 25 DP 568359	UNMK 26 DP 568359	ob46	183°16'00"	C		4.99 C		Class A
UNMK 26 DP 568359	UNMK 27 DP 568359	ob47	189°18'00"	C		5.94 C		Class A
UNMK 27 DP 568359	UNMK 28 DP 568359	ob48	192°50'00"	C		6.20 C		Class A
UNMK 28 DP 568359	UNMK 29 DP 568359	ob49	183°04'00"	C		5.17 C		Class A
UNMK 29 DP 568359	UNMK 30 DP 568359	ob50	176°33'00"	C		6.45 C		Class A
UNMK 30 DP 568359	UNMK 31 DP 568359	ob51	170°37'00"	C		5.66 C		Class A
UNMK 31 DP 568359	UNMK 32 DP 568359	ob52	174°38'00"	C		5.89 C		Class A
UNMK 32 DP 568359	UNMK 33 DP 568359	ob53	167°44'00"	C		4.80 C		Class A
UNMK 33 DP 568359	UNMK 34 DP 568359	ob54	153°23'00"	C		6.58 C		Class A
UNMK 34 DP 568359	UNMK 35 DP 568359	ob55	146°00'00"	C		4.10 C		Class A
UNMK 35 DP 568359	UNMK 36 DP 568359	ob56	136°56'00"	C		5.33 C		Class A
UNMK 36 DP 568359	UNMK 37 DP 568359	ob57	116°00'00"	C		3.18 C		Class A
UNMK 37 DP 568359	UNMK 38 DP 568359	ob58	102°59'00"	C		3.13 C		Class A
UNMK 38 DP 568359	UNMK 39 DP 568359	ob59	91°01'00"	C		3.19 C		Class A
UNMK 39 DP 568359	UNMK 40 DP 568359	ob60	79°32'00"	C		4.00 C		Class A
UNMK 40 DP 568359	UNMK 15 DP 568359	ob61	89°44'00"	C		4.72 C		Class A

# Mark and Vector

Survey Number DP 568359

Meridional Circuit Mount Pleasant 2000

From	To	Code	Bearing	Adpt Surv	Bearing Correction	Distance	Adpt Surv	Class
UNMK 16 DP 568359	UNMK 41 DP 568359	ob36	271°01'00"	C		5.27 C		Class A
UNMK 41 DP 568359	UNMK 42 DP 568359	ob62	272°39'00"	C		4.46 C		Class A
UNMK 42 DP 568359	UNMK 43 DP 568359	ob63	281°11'00"	C		4.01 C		Class A
UNMK 43 DP 568359	UNMK 44 DP 568359	ob64	304°45'00"	C		4.91 C		Class A
UNMK 44 DP 568359	UNMK 45 DP 568359	ob65	326°19'00"	C		5.19 C		Class A
UNMK 45 DP 568359	UNMK 46 DP 568359	ob66	336°47'00"	C		6.66 C		Class A
UNMK 46 DP 568359	UNMK 47 DP 568359	ob67	350°03'00"	C		5.69 C		Class A
UNMK 47 DP 568359	UNMK 48 DP 568359	ob68	355°07'00"	C		5.41 C		Class A
UNMK 48 DP 568359	UNMK 49 DP 568359	ob69	356°26'00"	C		7.85 C		Class A
UNMK 49 DP 568359	UNMK 50 DP 568359	ob70	6°09'00"	C		5.77 C		Class A
UNMK 50 DP 568359	UNMK 51 DP 568359	ob71	14°42'00"	C		4.90 C		Class A
UNMK 51 DP 568359	UNMK 52 DP 568359	ob72	30°08'00"	C		7.86 C		Class A
UNMK 52 DP 568359	UNMK 53 DP 568359	ob73	26°18'00"	C		3.50 C		Class A
UNMK 53 DP 568359	UNMK 54 DP 568359	ob74	10°58'00"	C		3.81 C		Class A
UNMK 54 DP 568359	UNMK 55 DP 568359	ob75	356°44'00"	C		2.15 C		Class A
UNMK 55 DP 568359	UNMK 70 DP 568359	ob76	340°07'00"	C		6.12 C		Class A
UNMK 70 DP 568359	UNMK 73 DP 568359	ob95	340°07'00"	C		2.77 C		Class A
UNMK 73 DP 568359	UNMK 72 DP 568359	ob101	340°07'00"	C		3.40 C		Class A
UNMK 72 DP 568359	UNMK 71 DP 568359	ob99	353°25'00"	C		2.62 C		Class A
UNMK 71 DP 568359	UNMK 56 DP 568359	ob97	357°15'00"	C		9.09 C		Class A
UNMK 56 DP 568359	UNMK 18 DP 568359	ob77	4°00'00"	C		4.10 C		Class A
UNMK 58 DP 568359	UNMK 61 DP 568359	ob80	334°49'00"	C		8.16 C		Class A
UNMK 61 DP 568359	UNMK 62 DP 568359	ob84	283°58'00"	C		30.43 C		Class A
UNMK 62 DP 568359	UNMK 63 DP 568359	ob85	275°48'00"	C		24.89 C		Class A

# Mark and Vector

Survey Number DP 568359

Meridional Circuit Mount Pleasant 2000

From	To	Code	Bearing	Adpt Surv	Bearing Correction	Distance	Adpt Surv	Class
UNMK 63 DP 568359	UNMK 64 DP 568359	ob86	284°43'00"	C		45.96 C		Class A
UNMK 64 DP 568359	UNMK 60 DP 568359	ob87	290°44'00"	C		14.46 C		Class A
UNMK 59 DP 568359	UNMK 65 DP 568359	ob82	110°44'00"	C		14.42 C		Class A
UNMK 65 DP 568359	UNMK 66 DP 568359	ob88	104°43'00"	C		45.70 C		Class A
UNMK 66 DP 568359	UNMK 67 DP 568359	ob89	95°48'00"	C		24.88 C		Class A
UNMK 67 DP 568359	UNMK 68 DP 568359	ob90	103°58'00"	C		31.52 C		Class A
UNMK 68 DP 568359	UNMK 57 DP 568359	ob91	154°49'00"	C		10.04 C		Class A

\*\*\* End of Report \*\*\*



**Land Registration District**

Canterbury

**Plan Number**

DP 568359

**Territorial Authority (the Council)**

Christchurch City Council

**Council Reference**

RMA/2021/3042

195 Peterborough St, Christchurch 8013  
PO Box 895, Christchurch 8140

0800 FOX SURVEY  
0800 369 787

info@foxsurvey.co.nz  
www.foxsurvey.co.nz

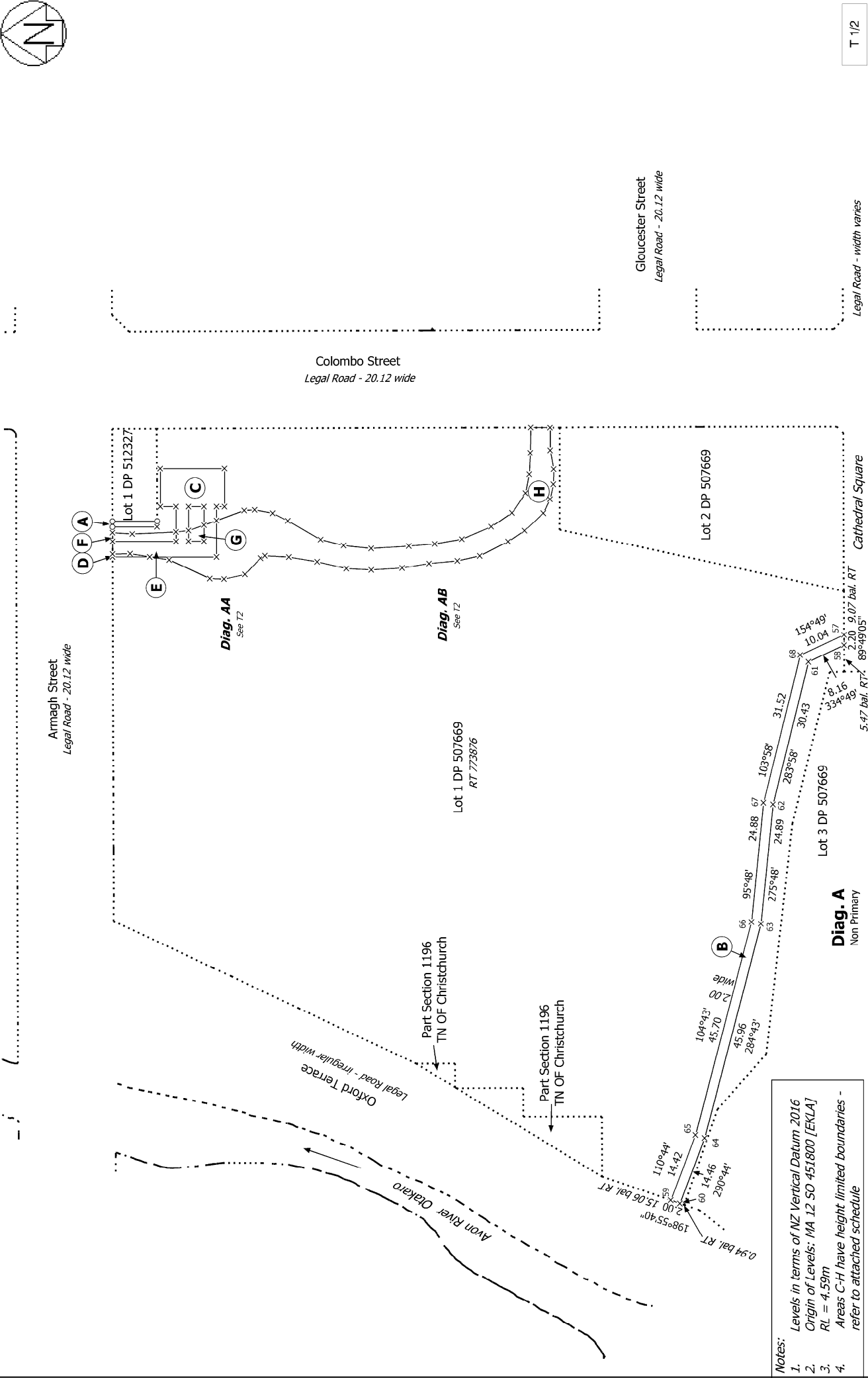
<i>Schedule of Proposed Easements</i>			
Purpose	Shown	Burdened Land	Benefited Land
Right of way on foot only, right to drain sewage	A	Lot 1 DP 507669	Lot 1 DP 512327

<i>Schedule of Proposed Easements in Gross</i>				
Purpose	Shown	Burdened Land	Grantee	Upper Height Limit
Right to convey electricity	B	Lot 1 DP 507669	Orion NZ Ltd	<del>9.16m</del>
	C, D			9.16m
Right to convey electricity, right of way	E			9.16m
Right of way	F, G, H			9.16m

**Notes:**

1. Levels in terms of NZ Vertical Datum 2016
2. Origin of Levels: MA 12 SO 451800 [EKLA]
3. RL = 4.59m





T 1/2

Record of Survey  
DP 568359  
Deposited on: 7/10/2022

Surveyor: Alexander David John Liggett  
Firm: Fox and Associates  
Date of Survey: 23/06/2021

Proposed Easements over Lot 1 DP 507669

Land District: Canterbury  
Dataset Type: Parcels without Survey Information  
**Digitally Generated Plan**  
Generated on: 15/11/2022 12:59pm Page 3 of 10

- Notes:
- Levels in terms of NZ Vertical Datum 2016
  - Origin of Levels: MA 12 SO 451800 [EKLA]
  - RL = 4.59m
  - Areas C-H have height limited boundaries - refer to attached schedule

**Diag. A**  
Non Primary

Lot 3 DP 507669

Lot 2 DP 507669

Lot 1 DP 507669  
RT 773876

**Diag. AA**  
See T2

**Diag. AB**  
See T2

Lot 1 DP 512327

Armagh Street  
Legal Road - 20.12 wide

Colombo Street  
Legal Road - 20.12 wide

Gloucester Street  
Legal Road - 20.12 wide

Cathedral Square  
Legal Road - width varies

Oxford Terrace  
Legal Road - irregular width

Part Section 1196  
TN OF Christchurch

Part Section 1196  
TN OF Christchurch

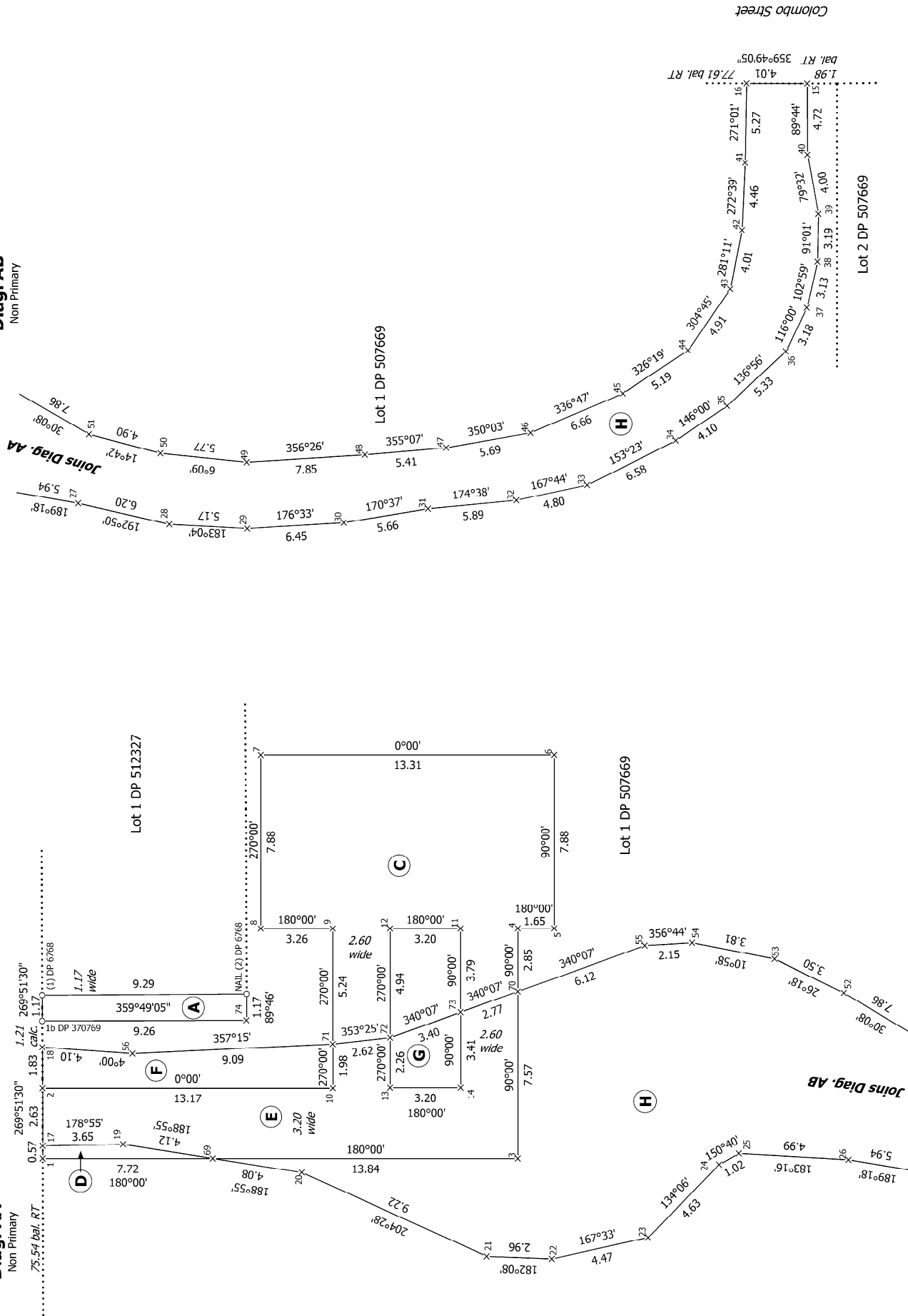
Acorn River  
Oakaro

0.94 bal RT  
198°55'40"  
2.00  
15.06 bal RT  
110°44'  
14.42  
59  
60  
14.46  
290°44'  
64  
65  
104°43'  
45.70  
45.96  
284°43'  
63  
275°48'  
24.89  
62  
103°58'  
24.88  
67  
31.52  
283°58'  
30.43  
68  
154°49'  
10.04  
57  
33°46'  
39  
59  
2.20  
9.07 bal RT  
89°49'05"  
5.47 bal RT



**Diag. AB**  
Non Primary

**Diag. AA**  
Non Primary



T 2/2

Record of Survey  
DP 568359  
Deposited on: 7/10/2022

Surveyor: Alexander David John Liggett  
Firm: Fox and Associates  
Date of Survey: 23/06/2021

Proposed Easements over Lot 1 DP 507669

Land District: Canterbury  
Dataset Type: Parcels without Survey Information  
**Digitally Generated Plan**  
Generated on: 15/11/2022 12:53pm Page 10 of 10