



CSD Plan - DP 528502

Survey Number DP 528502
Surveyor Reference 24630-LT-511 Gordons Road
Surveyor Matthew Keith Adams
Survey Firm Envivo Limited
Surveyor Declaration I Matthew Keith Adams, being a licensed cadastral surveyor, certify that:
(a) this dataset provided by me and its related survey are accurate, correct and in accordance with the Cadastral Survey Act 2002 and the Rules for Cadastral Survey 2010, and
(b) the survey was undertaken by me or under my personal direction.
Declared on 31 Oct 2018 03:29 PM

Survey Details

Dataset Description Lots 1 - 13 Being a Subdivision of Part Lot 5 DP 7550
Purpose LT Subdivision
Status Deposited **Type** Survey
Land District North Auckland **Survey Class** Class B
Meridional Circuit Mount Eden 2000

Survey Dates

Surveyed Date 24/08/2018 **Certified Date** 31/10/2018
Submitted Date 31/10/2018 15:29:33 **Survey Approval Date** 01/11/2018
Deposit Date 05/03/2019

Referenced Surveys

Survey Number	Land District	Bearing Correction
DP 11404	North Auckland	0°00'00"
DP 11660	North Auckland	0°00'00"
DP 24387	North Auckland	0°00'00"
DP 7550	North Auckland	0°00'00"
SO 59634	North Auckland	0°00'00"
SO 501165	North Auckland	0°00'00"
ML 264	North Auckland	0°00'00"
DP 145345	North Auckland	0°00'00"
SO 61765	North Auckland	0°00'00"
SO 53098	North Auckland	0°00'00"
SO 53099	North Auckland	0°00'00"
ML 542	North Auckland	0°00'00"
DP 430563	North Auckland	0°00'00"
DP 4119	North Auckland	0°00'00"

Territorial Authorities

Auckland Council

Comprised In

RT NA1107/112



CSD Plan - DP 528502

Created Parcels

Parcels	Parcel Intent	Area	RT Reference
Area Y Deposited Plan 528502	Easement		
Lot 1 Deposited Plan 528502	Fee Simple Title	9.4116 Ha	854301
Lot 2 Deposited Plan 528502	Fee Simple Title	4.6566 Ha	854302
Lot 3 Deposited Plan 528502	Common Marine and Coastal Area (Sec 237A(1)(b) RM Act)	0.3591 Ha	
Lot 4 Deposited Plan 528502	Common Marine and Coastal Area (Sec 237A(1)(b) RM Act)	0.0325 Ha	
Lot 5 Deposited Plan 528502	Common Marine and Coastal Area (Sec 237A(1)(b) RM Act)	0.0213 Ha	
Lot 6 Deposited Plan 528502	Common Marine and Coastal Area (Sec 237A(1)(b) RM Act)	0.0375 Ha	
Lot 7 Deposited Plan 528502	Common Marine and Coastal Area (Sec 237A(1)(b) RM Act)	0.0379 Ha	
Lot 8 Deposited Plan 528502	Common Marine and Coastal Area (Sec 237A(1)(b) RM Act)	0.0147 Ha	
Lot 9 Deposited Plan 528502	Common Marine and Coastal Area (Sec 237A(1)(b) RM Act)	0.0264 Ha	
Lot 10 Deposited Plan 528502	Common Marine and Coastal Area (Sec 237A(1)(b) RM Act)	0.0151 Ha	
Lot 11 Deposited Plan 528502	Common Marine and Coastal Area (Sec 237A(1)(b) RM Act)	0.0156 Ha	
Lot 12 Deposited Plan 528502	Common Marine and Coastal Area (Sec 237A(1)(b) RM Act)	0.0110 Ha	
Lot 13 Deposited Plan 528502	Common Marine and Coastal Area (Sec 237A(1)(b) RM Act)	0.0133 Ha	
Area Z Deposited Plan 528502	Land Covenant		
Total Area		<hr/> 14.6526 Ha	

Mark and Vector

Survey Number DP 528502

Meridional Circuit Mount Eden 2000

From	To	Code	Bearing	Adpt Surv	Distance	Adpt Surv	Class
954	IS II SO 59634	ob0	250°48'50"	M	568.35	M	
IS II SO 59634	IT R SO 53098	ob2	120°52'45"	M	407.91	M	
IT R SO 53098	954	ob5	25°14'00"	A SO 59634	437.92	A SO 59634	
954	IT IX SO 59634	ob1	255°37'30"	M	294.18	M	
IT IX SO 59634	IS II SO 59634	ob8	245°41'20"	M	276.30	M	
IT R SO 53098	IB XIII SO 59634	ob6	103°05'40"	M	286.07	M	
IB XIII SO 59634	IT XIV SO 59634	ob13	4°00'10"	M	113.10	M	
IT XIV SO 59634	IS 17 DP 528502	ob15	112°49'30"	M	160.22	M	
IS 17 DP 528502	IT R SO 53098	ob17	271°51'50"	M	434.47	M	
IS II SO 59634	IS I DP 33430	ob3	297°38'20"	M	73.72	M	
IS I DP 33430	IT R SO 53098	ob18	120°23'10"	M	481.52	M	
IS II SO 59634	IS 1 DP 528502	ob4	104°01'00"	M	69.72	M	
IS 1 DP 528502	NAIL 2 DP 528502	ob19	156°20'00"	M	218.09	M	
NAIL 2 DP 528502	NAIL 3 DP 528502	ob22	143°28'20"	M	45.00	M	
NAIL 3 DP 528502	NAIL 4 DP 528502	ob24	153°48'30"	M	89.60	M	
NAIL 4 DP 528502	NAIL 5 DP 528502	ob25	188°16'20"	M	68.05	M	
NAIL 5 DP 528502	NAIL 6 DP 528502	ob27	179°40'20"	M	67.80	M	
NAIL 6 DP 528502	NAIL 7 DP 528502	ob30	103°32'00"	M	21.13	M	
NAIL 7 DP 528502	NAIL 8 DP 528502	ob34	47°36'30"	M	56.66	M	
NAIL 8 DP 528502	NAIL 9 DP 528502	ob35	57°21'00"	M	45.50	M	
NAIL 9 DP 528502	NAIL 10 DP 528502	ob36	51°20'30"	M	42.75	M	
NAIL 10 DP 528502	NAIL 11 DP 528502	ob39	81°21'00"	M	50.61	M	
NAIL 11 DP 528502	NAIL 12 DP 528502	ob42	88°56'20"	M	52.79	M	
NAIL 12 DP 528502	NAIL 13 DP 528502	ob45	76°10'10"	M	90.78	M	
NAIL 13 DP 528502	NAIL 14 DP 528502	ob48	94°39'20"	M	126.82	M	
NAIL 14 DP 528502	NAIL 16 DP 528502	ob52	40°19'20"	M	61.04	M	
NAIL 16 DP 528502	IS 17 DP 528502	ob58	40°53'20"	M	124.10	M	
NAIL 6 DP 528502	IT R SO 53098	ob31	28°02'40"	M	293.47	M	
NAIL 14 DP 528502	IB XIII SO 59634	ob53	338°46'00"	M	96.19	M	
IT IX SO 59634	IT R SO 53098	ob9	163°04'50"	M	337.70	M	
IT IX SO 59634	IS III SO 59634	ob10	6°26'50"	M	100.27	M	
IS III SO 59634	IT I SO 59634	ob59	255°31'00"	A DP 59634	141.23	A DP 59634	
IT I SO 59634	IS II SO 59634	ob60	215°21'00"	A DP 59634	218.35	A DP 59634	
IT IX SO 59634	IS X SO 59634	ob11	155°43'30"	M	84.25	M	
IS X SO 59634	IS XI SO 59634	ob61	115°49'30"	A DP 59634	99.22	A DP 59634	
IS XI SO 59634	IS LXX SO 53098	ob63	218°07'10"	A DP 59634	210.28	A DP 59634	

Mark and Vector

Survey Number DP 528502

Meridional Circuit Mount Eden 2000

From	To	Code	Bearing	Adpt Surv	Distance	Adpt Surv	Class
IS LXX SO 53098	IT R SO 53098	ob64	109°52'00"	A SO 59634	110.74	A SO 59634	
IS X SO 59634	IS 1 SO 501165	ob62	128°04'00"	A SO 501165	130.81	A SO 501165	
IS 1 SO 501165	IS 2 SO 501165	ob65	229°13'00"	A SO 501165	198.41	A SO 501165	
IS 2 SO 501165	IS X SO 59634	ob66	12°39'50"	A SO 501165	215.51	A SO 501165	
IB XIII SO 59634	IS XII SO 59634	ob14	266°18'20"	A SO 59634	148.84	A SO 59634	
IS XII SO 59634	IT R SO 53098	ob67	299°46'00"	A SO 59634	149.87	A SO 59634	
IT XIV SO 59634	PEG 33 SO 59634	ob16	176°45'00"	A SO 59634	75.31	A SO 59634	
PEG 33 SO 59634	PEG 34 SO 59634	ob68	186°23'00"	A SO 59634	41.91	A SO 59634	Class B
PEG 34 SO 59634	PEG 35 SO 59634	ob70	265°43'50"	A SO 59634	125.54	A SO 59634	Class B
PEG 35 SO 59634	PEG 36 SO 59634	ob71	279°13'40"	A SO 59634	169.55	A SO 59634	Class B
PEG 36 SO 59634	IT R SO 53098	ob72	7°11'00"	A SO 59634	51.39	A SO 59634	
PEG 36 SO 59634	PEG 37 SO 59634	ob73	293°54'00"	A SO 59634	71.17	A SO 59634	Class B
PEG 37 SO 59634	PEG 38 SO 59634	ob74	287°02'00"	A SO 59634	53.10	A SO 59634	Class B
PEG 38 SO 59634	PEG 22 SO 59634	ob75	334°37'00"	A SO 59634	27.36	A SO 59634	Class B
PEG 22 SO 59634	IS LXX SO 53098	ob77	56°50'00"	A SO 59634	35.65	A SO 59634	
PEG 22 SO 59634	IS 2 SO 501165	ob78	52°13'00"	A SO 501165	29.23	A SO 501165	
PEG 22 SO 59634	PEG 21 SO 59634	ob79	34°08'00"	A SO 59634	33.10	A SO 59634	Class B
PEG 21 SO 59634	PEG 19 SO 59634	ob80	58°33'10"	A SO 59634	168.99	A SO 59634	Class B
PEG 19 SO 59634	IS 1 SO 501165	ob81	18°21'00"	A SO 501165	33.66	A SO 501165	
PEG 19 SO 59634	PEG 18 SO 59634	ob82	26°19'30"	A SO 59634	24.86	A SO 59634	Class B
PEG 18 SO 59634	PEG 17 SO 53098	ob83	307°24'40"	A SO 59634	140.79	A SO 59634	Class B
PEG 17 SO 53098	IS X SO 59634	ob84	60°22'00"	M	9.68	M	
PEG 17 SO 53098	PEG 13 SO 59634	ob85	338°23'30"	A SO 59634	94.15	A SO 59634	Class B
PEG 13 SO 59634	UNMK 45 DP 528502	ob87	7°58'40"	A SO 59634	79.41	A SO 59634	Class B
UNMK 45 DP 528502	PEG 14 SO 59634	ob88	7°58'40"	A SO 59634	0.45	A SO 59634	Class B
PEG 14 SO 59634	IT IX SO 59634	ob90	181°45'30"	A SO 501165	85.06	A SO 501165	
PEG 14 SO 59634	UNMK 47 DP 528502	ob91	316°14'00"	A SO 59634	9.96	A SO 59634	Class B
UNMK 47 DP 528502	PEG 15 SO 59634	ob92	316°14'00"	A SO 59634	21.29	A SO 59634	Class B
PEG 15 SO 59634	UNMK 49 DP 528502	ob94	253°08'00"	A SO 59634	7.60	A SO 59634	Class B
UNMK 49 DP 528502	UNMK 50 DP 528502	ob95	253°08'00"	A SO 59634	4.12	A SO 59634	Class B
UNMK 50 DP 528502	PEG 16 SO 59634	ob96	253°08'00"	A SO 59634	103.83	A SO 59634	Class B
PEG 16 SO 59634	IT I SO 59634	ob97	157°09'00"	A SO 59634	10.57	A SO 59634	
PEG 16 SO 59634	PEG 27 SO 501165	ob98	210°43'00"	A DP 11660	206.65	A SO 501165	Class B
PEG 27 SO 501165	IS II SO 59634	ob99	238°44'00"	A SO 501165	19.53	A SO 501165	
PEG 27 SO 501165	PEG 23 DP 11404	ob100	210°43'00"	A DP 11404	26.00	A SO 501165	Class B
PEG 23 DP 11404	PEG IXA DP 11660	ob101	300°43'00"	A DP 11660	20.12	A DP 11660	
PEG IXA DP 11660	PEG 25 SO 59634	ob103	30°43'00"	A DP 11660	30.46	A SO 59634	

Mark and Vector

Survey Number DP 528502

Meridional Circuit Mount Eden 2000

From	To	Code	Bearing	Adpt Surv	Distance	Adpt Surv	Class
PEG 25 SO 59634	PEG 26 SO 59634	ob104	286°25'00"	A SO 59634	80.70	A SO 59634	
PEG 26 SO 59634	IS I DP 33430	ob105	140°59'00"	A SO 59634	16.52	A SO 59634	
UNMK 47 DP 528502	UNMK 49 DP 528502	ob93	300°54'25"	A SO 59634	25.64	A SO 59634	Class B
UNMK 45 DP 528502	UNMK 50 DP 528502	ob89	300°54'25"	A SO 59634	38.19	A SO 59634	Class B
PEG 17 SO 53098	PEG 57 DP 528502	ob86	236°05'15"	C	105.38	C	Class B
PEG 57 DP 528502	PEG 58 DP 528502	ob106	262°47'00"	C	74.76	C	Class B
PEG 58 DP 528502	PEG 59 DP 528502	ob107	224°54'00"	C	53.94	C	Class B
PEG 59 DP 528502	IS 1 DP 528502	ob108	349°26'30"	M	58.33	M	
IS 1 DP 528502	PEG 58 DP 528502	ob20	111°25'30"	M	52.38	M	
IS 1 DP 528502	PEG 57 DP 528502	ob21	94°32'00"	M	123.31	M	
PEG 33 SO 59634	PEG XLIV DP 4119	ob69	68°58'00"	A SO 59634	51.94	A SO 59634	Class B
PEG XLIV DP 4119	PEG 61 SO 59634	ob110	345°21'00"	A DP 24387	82.33	A SO 59634	
PEG 61 SO 59634	IT XIV SO 59634	ob112	234°08'00"	A SO 59634	39.42	A SO 59634	
PEG XLIV DP 4119	PEG XLIII DP 4119	ob111	106°17'00"	A DP 24387	29.73	A DP 24387	Class B
PEG XLIII DP 4119	PEG XLII DP 4119	ob113	153°34'00"	A DP 24387	48.96	A DP 24387	Class B
PEG XLII DP 4119	PEG 23 DP 11404	ob114	289°18'00"	C	780.14	C	
IT R SO 53098	IT DEAD SO 50659	ob7	81°38'40"	M	193.69	M	
IT DEAD SO 50659	IB XIII SO 59634	ob116	136°53'40"	M	127.34	M	
IT DEAD SO 50659	954	ob117	359°13'50"	A SO 59634	368.02	A SO 59634	
IT IX SO 59634	IT DEAD SO 50659	ob12	135°29'30"	M	413.57	C	
PEG 38 SO 59634	UNMK 65 DP 528502	ob76	231°52'00"	C	43.83	C	Class B
UNMK 65 DP 528502	PEG 22 SO 59634	ob118	23°43'00"	C	56.56	C	
PEG XLII DP 4119	UNMK 70 DP 528502	ob115	153°34'00"	A DP 7550	3.78	C	Class B
UNMK 70 DP 528502	UNMK 71 DP 528502	ob123	153°34'00"	A DP 7550	4.27	C	Class B
UNMK 71 DP 528502	IS 17 DP 528502	ob124	37°19'30"	C	67.64	C	
PEG 23 DP 11404	UNMK 72 DP 528502	ob102	210°43'00"	A DP 11404	8.44	C	Class B
UNMK 72 DP 528502	UNMK 73 DP 528502	ob125	210°43'00"	A DP 11404	5.69	C	Class B
UNMK 73 DP 528502	IS II SO 59634	ob127	8°52'00"	C	24.66	C	
PEG 59 DP 528502	UNMK 74 DP 528502	ob109	224°54'00"	C	7.11	C	Class B
UNMK 74 DP 528502	IS 1 DP 528502	ob129	354°48'30"	C	62.64	C	
UNMK 72 DP 528502	UNMK 74 DP 528502	ob126	128°51'30"	C	95.30	C	

Mark and Vector

Survey Number DP 528502

Meridional Circuit Mount Eden 2000

From	To	Code	Bearing	Adpt Surv	Distance	Adpt Surv	Class
UNMK 74 DP 528502	UNMK 65 DP 528502	ob130	143°45'20"	C	203.03	C	
UNMK 73 DP 528502	UNMK 75 DP 528502	ob128	210°43'00"	A DP 11404	11.15	C	Class B
UNMK 75 DP 528502	IS II SO 59634	ob131	15°38'00"	C	35.25	C	
NAIL 2 DP 528502	UNMK 66 DP 528502	ob23	62°59'00"	C	8.04	C	
UNMK 66 DP 528502	NAIL 3 DP 528502	ob119	153°46'00"	C	44.39	C	
NAIL 4 DP 528502	UNMK 67 DP 528502	ob26	162°21'00"	C	29.02	C	
UNMK 67 DP 528502	NAIL 5 DP 528502	ob120	205°06'00"	C	43.83	C	
NAIL 5 DP 528502	UNMK 68 DP 528502	ob28	148°01'30"	C	10.60	C	
UNMK 68 DP 528502	NAIL 6 DP 528502	ob121	185°04'30"	C	59.04	C	
NAIL 5 DP 528502	UNMK 69 DP 528502	ob29	151°18'30"	C	18.63	C	
UNMK 69 DP 528502	NAIL 6 DP 528502	ob122	189°26'30"	C	52.16	C	
NAIL 6 DP 528502	UNMK 76 DP 528502	ob32	80°09'30"	C	9.10	C	
UNMK 76 DP 528502	NAIL 7 DP 528502	ob132	119°19'00"	C	13.28	C	
NAIL 6 DP 528502	UNMK 77 DP 528502	ob33	88°13'15"	C	21.81	C	
UNMK 77 DP 528502	NAIL 7 DP 528502	ob133	192°36'00"	C	5.76	C	
NAIL 9 DP 528502	UNMK 78 DP 528502	ob37	253°21'00"	C	8.52	C	
UNMK 78 DP 528502	NAIL 8 DP 528502	ob134	233°45'00"	C	37.38	C	
NAIL 9 DP 528502	UNMK 79 DP 528502	ob38	255°44'30"	C	7.26	C	
UNMK 79 DP 528502	IT R SO 53098	ob135	12°18'40"	C	207.75	C	
NAIL 10 DP 528502	UNMK 80 DP 528502	ob40	77°21'00"	C	24.75	C	
UNMK 80 DP 528502	IT R SO 53098	ob136	353°09'40"	C	170.27	C	
NAIL 10 DP 528502	UNMK 81 DP 528502	ob41	78°56'00"	C	37.09	C	
UNMK 81 DP 528502	IT R SO 53098	ob137	349°00'20"	C	170.49	C	
NAIL 11 DP 528502	UNMK 82 DP 528502	ob43	87°21'00"	C	27.51	C	

Mark and Vector

Survey Number DP 528502

Meridional Circuit Mount Eden 2000

From	To	Code	Bearing	Adpt Surv	Distance	Adpt Surv	Class
UNMK 82 DP 528502	IT R SO 53098	ob138	336°01'40"	C	181.23	C	
NAIL 12 DP 528502	UNMK 83 DP 528502	ob46	52°37'00"	C	53.20	C	
UNMK 83 DP 528502	IT R SO 53098	ob139	313°24'40"	C	194.39	C	
NAIL 12 DP 528502	UNMK 84 DP 528502	ob47	53°54'00"	C	56.48	C	
UNMK 84 DP 528502	IT R SO 53098	ob140	312°32'00"	C	196.18	C	
NAIL 13 DP 528502	UNMK 85 DP 528502	ob49	316°25'30"	C	10.81	C	
UNMK 85 DP 528502	IT R SO 53098	ob141	307°12'10"	C	225.53	C	
NAIL 13 DP 528502	UNMK 86 DP 528502	ob50	49°54'30"	C	8.00	C	
UNMK 86 DP 528502	IT R SO 53098	ob142	305°44'30"	C	238.03	C	
NAIL 14 DP 528502	UNMK 87 DP 528502	ob54	287°45'00"	C	82.77	C	
UNMK 87 DP 528502	IB XIII SO 59634	ob143	34°19'00"	C	78.03	C	
NAIL 14 DP 528502	UNMK 88 DP 528502	ob55	27°57'30"	C	36.47	C	
UNMK 88 DP 528502	IB XIII SO 59634	ob144	317°53'30"	C	77.46	C	
NAIL 14 DP 528502	UNMK 89 DP 528502	ob56	33°10'30"	C	74.12	C	
UNMK 89 DP 528502	IB XIII SO 59634	ob145	290°08'00"	C	80.31	C	
NAIL 14 DP 528502	UNMK 90 DP 528502	ob57	34°31'30"	C	82.05	C	
UNMK 90 DP 528502	IB XIII SO 59634	ob146	285°11'00"	C	84.29	C	
NAIL 14 DP 528502	1345	ob51	188°11'10"	M			
NAIL 12 DP 528502	1345	ob44	186°35'15"	M			

Mark Name	Description
1345	10 mm SS pin in 0.05 m dia galv iron pipe set in concrete
954	25mm SS pin in 0.05m dia galv iron pipe in concrete block 0.3x0.3 m. Bottle as buried mark. Beacon

*** End of Report ***

Schedule / Memorandum

Land Registration District

North Auckland

Survey Number

LT 528502

Territorial Authority (the Council)

Auckland Council

Schedule of Existing Easements in Gross

Last Edited: 04 Sep 2018 14:37:55

<u>Purpose</u>	<u>Shown</u>	<u>Servient Tenement</u>	<u>Creating Document Reference</u>
Right to convey electricity	Y	Lot 2	TE 623494

Schedule of Existing Easements

Last Edited: 16 Oct 2018 11:07:30

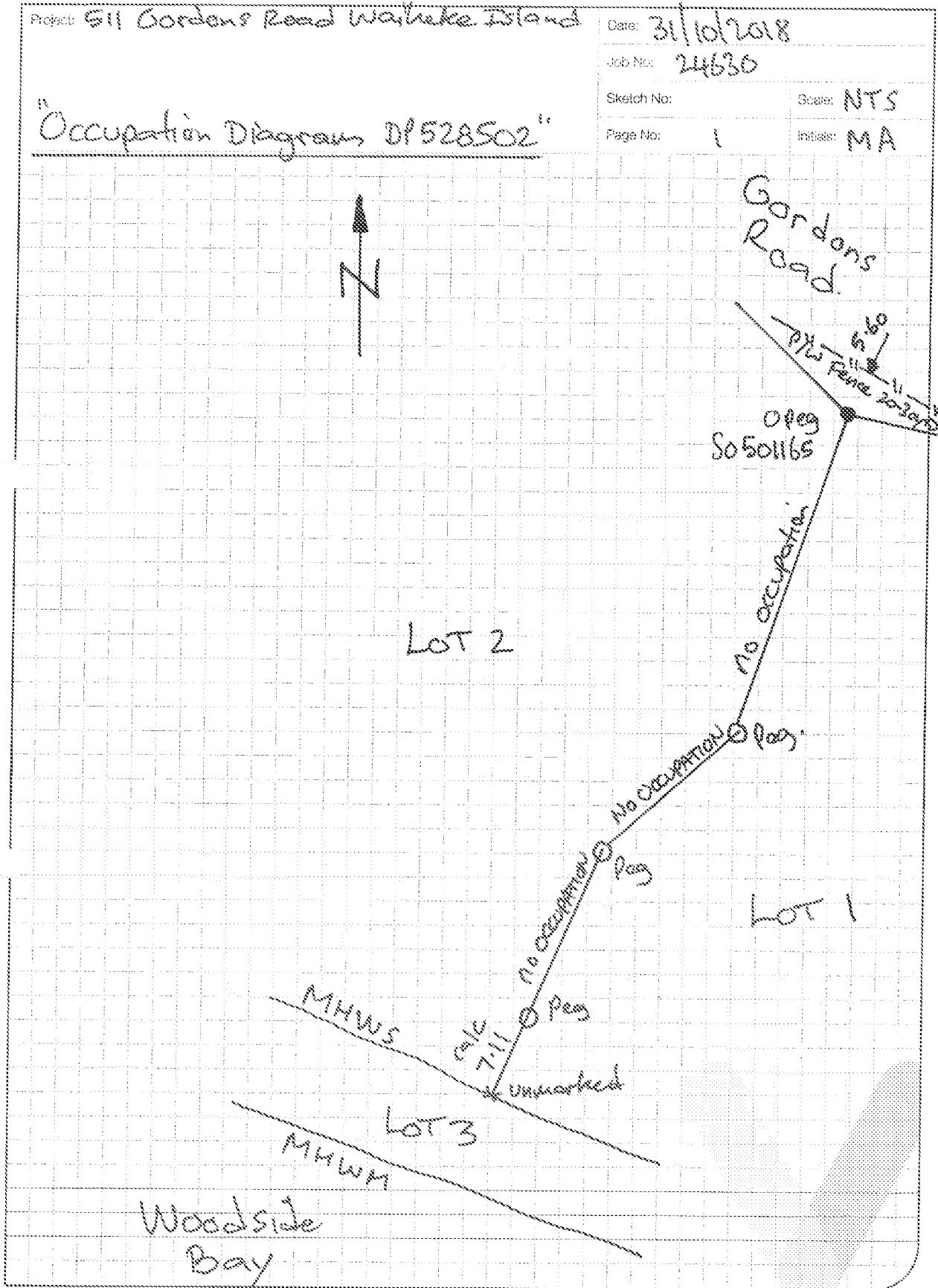
<u>Purpose</u>	<u>Shown</u>	<u>Servient Tenement</u>	<u>Creating Document Reference</u>
Right to drain water	Lot 1	Lot 1	TE D436237.3
	Lot 2	Lot 2	TE D436237.3

Notes

Last Edited: 16 Oct 2018 11:09:26

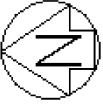
AREA Z SUBJECT TO LAND COVENANT

Occupation Diagram

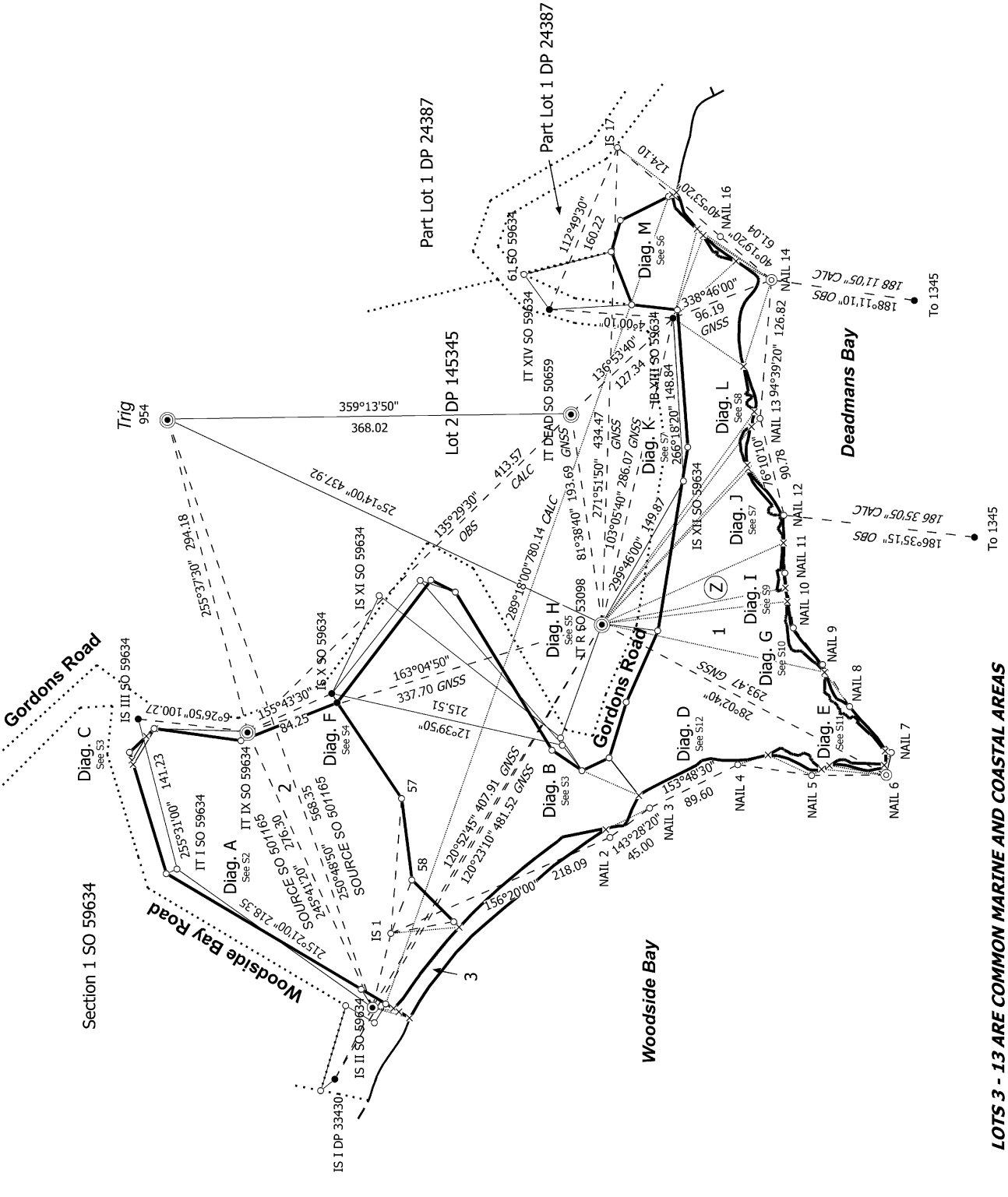


1st Floor, 18 Normanby Road, Mt Eden, Auckland 1024 P +64 9 630 9512
 PO Box 109 207, Newmarket, Auckland 1149 envivo.co.nz
 99 Carlyle Street, Sydenham, Christchurch 8023 P +64 6 928 1185
 PO Box 7588, Sydenham, Christchurch 8240 envivo.co.nz

envivo
 ENGINEERING SURVEYING PLANNING



S 1/12



LOTS 3 - 13 ARE COMMON MARINE AND COASTAL AREAS

Land District: North Auckland

Digitally Generated Plan

Generated on: 06/03/2019 2:20pm Page 10 of 26

Lots 1 - 13 Being a Subdivision of Part Lot 5 DP 7550

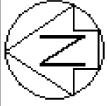
Surveyor: Matthew Keith Adams

Firm: Envivo Limited

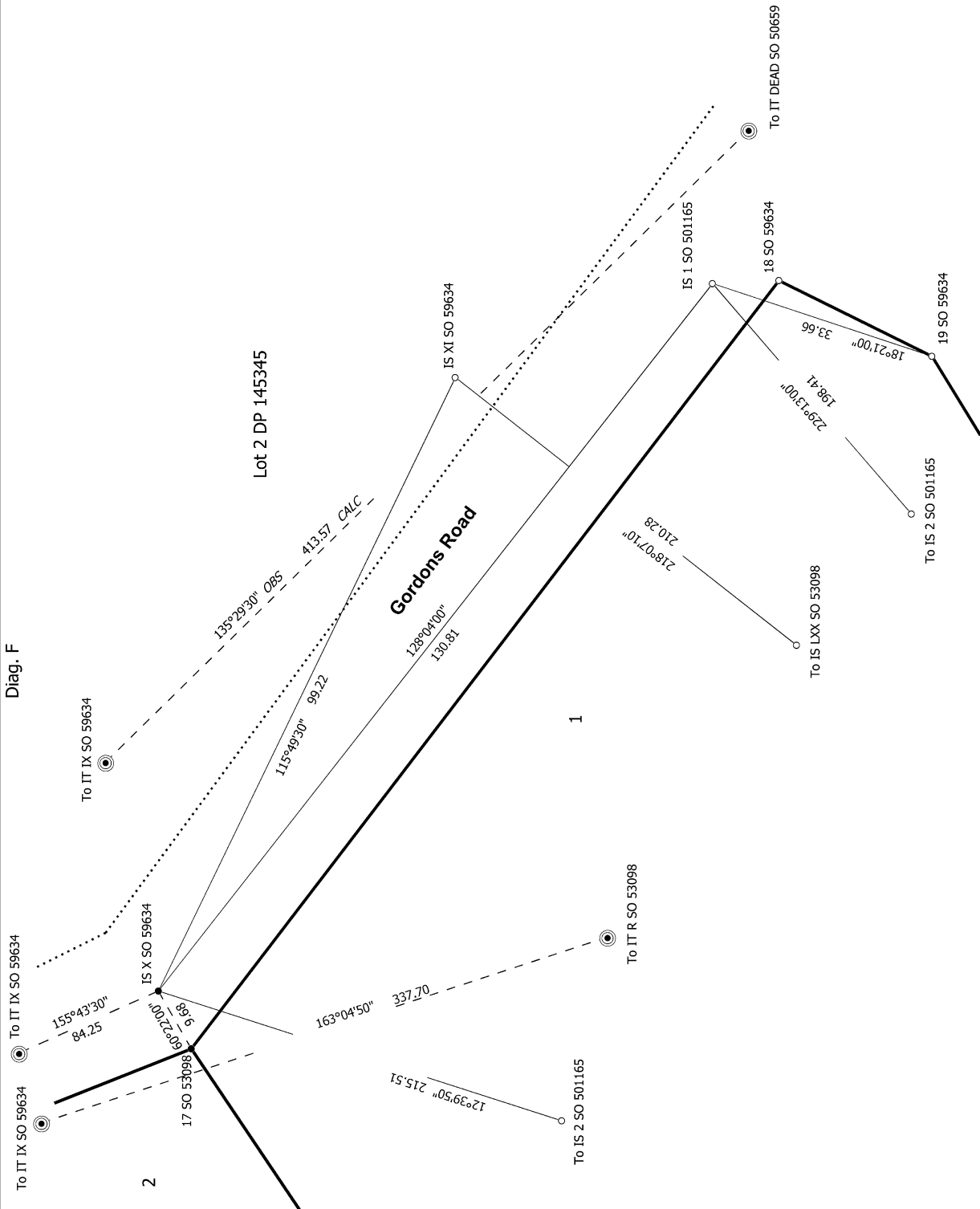
Survey Date: 24/08/2018

CSD Plan
DP 528502

Deposited on: 5/03/2019



Diag. F



S 4/12

LOTS 3 - 13 ARE COMMON MARINE AND COASTAL AREAS

Land District: North Auckland

Digitally Generated Plan

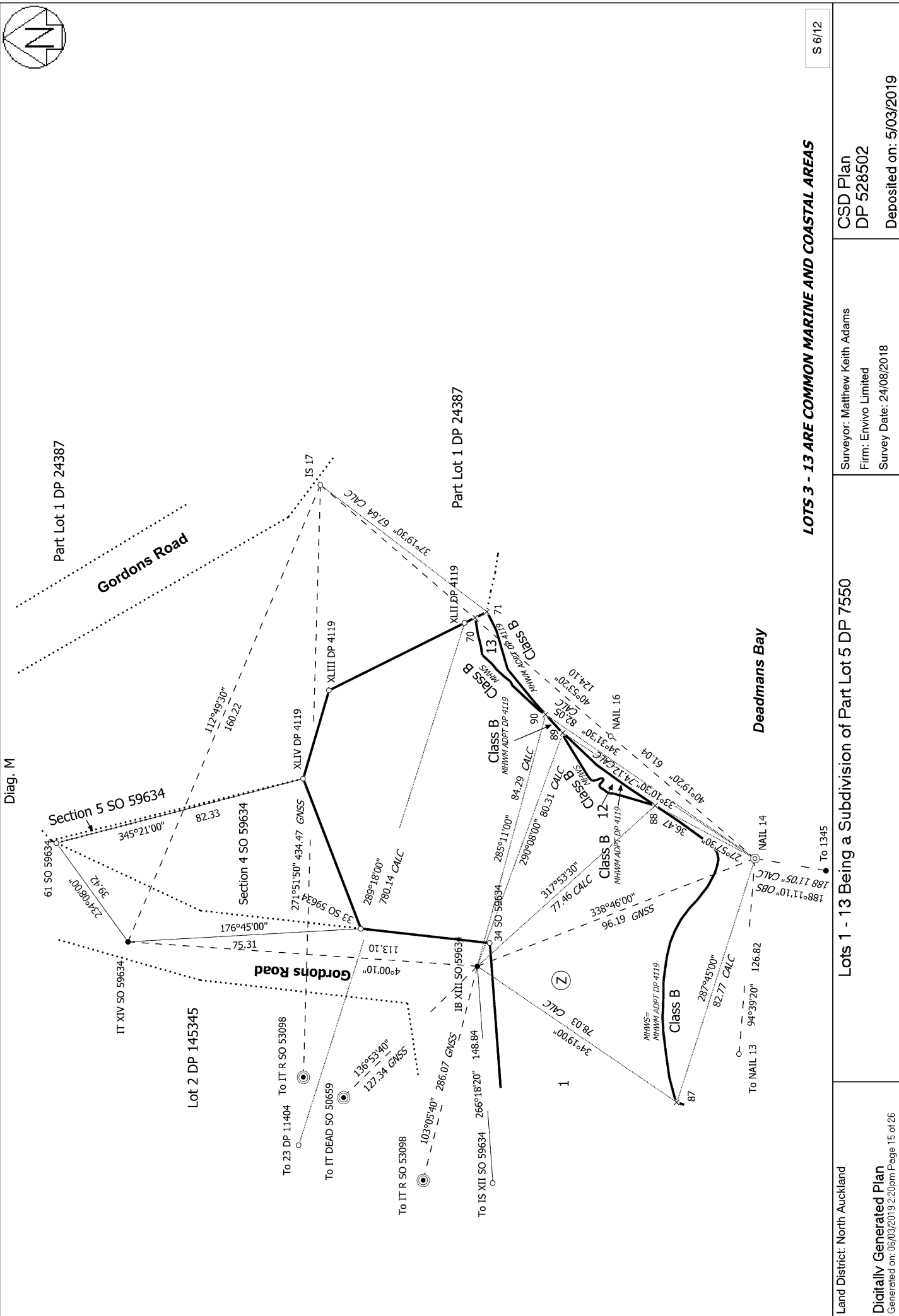
Generated on: 06/03/2019 2:20pm Page 13 of 26

Lots 1 - 13 Being a Subdivision of Part Lot 5 DP 7550

Surveyor: Matthew Keith Adams
 Firm: Envivo Limited
 Survey Date: 24/08/2018

CSD Plan
 DP 528502

Deposited on: 5/03/2019



S 6/12

LOTS 3 - 13 ARE COMMON MARINE AND COASTAL AREAS

Land District: North Auckland
 Digitally Generated Plan
 Generated on: 06/03/2019 2:20pm Page 15 of 26

Lots 1 - 13 Being a Subdivision of Part Lot 5 DP 7550

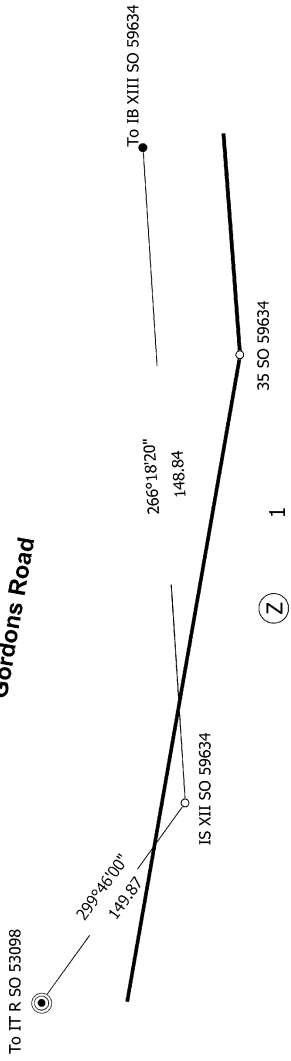
Surveyor: Matthew Keith Adams
 Firm: Envivo Limited
 Survey Date: 24/08/2018

CSD Plan
 DP 528502
 Deposited on: 5/03/2019

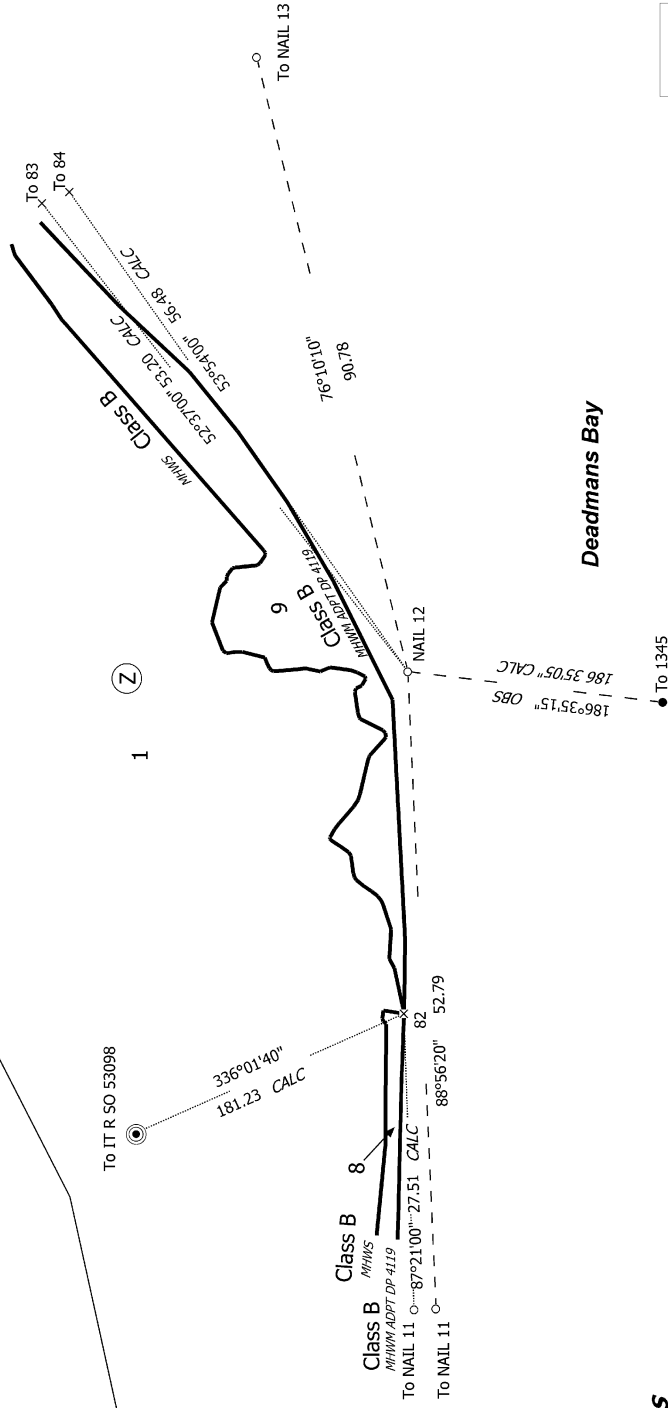
Diag. K

Lot 2 DP 145345

Gordons Road



Diag. J



LOTS 3 - 13 ARE COMMON MARINE AND COASTAL AREAS

S 7/12

Land District: North Auckland

Lots 1 - 13 Being a Subdivision of Part Lot 5 DP 7550

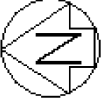
Surveyor: Matthew Keith Adams
Firm: Envivo Limited
Survey Date: 24/08/2018

CSD Plan
DP 528502

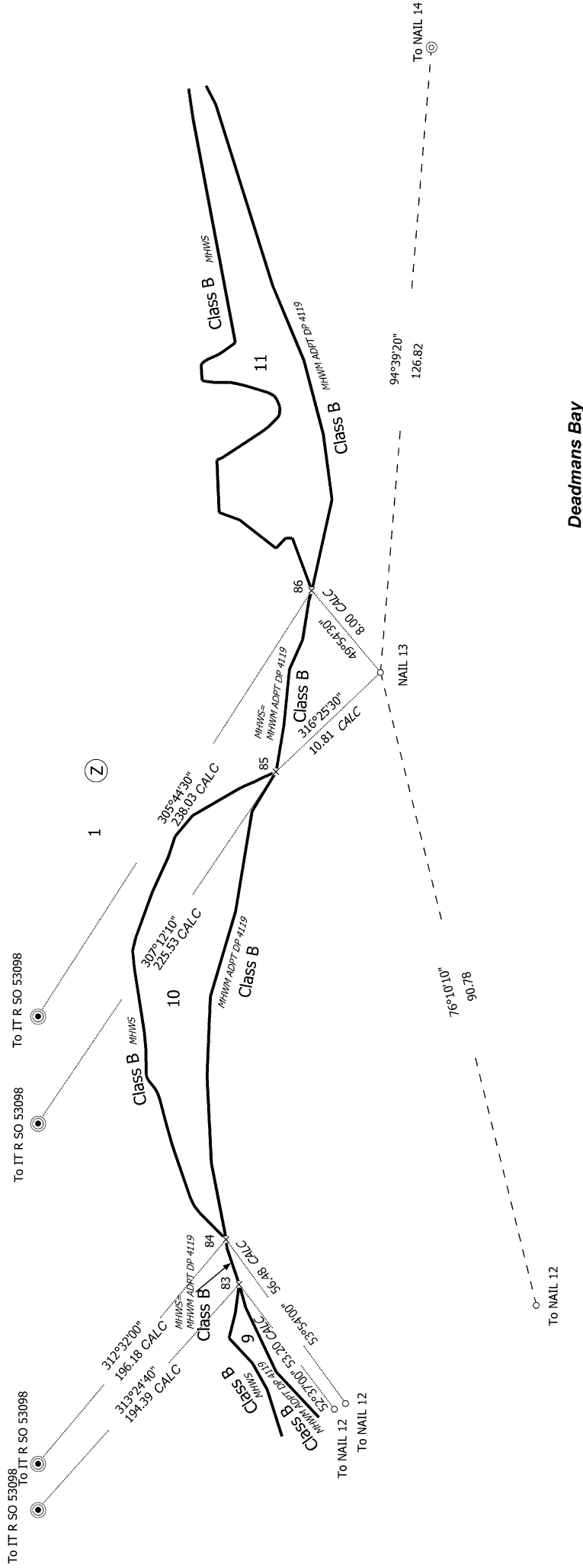
Digitally Generated Plan
Generated on: 06/03/2019 2:20pm Page 16 of 26

Deposited on: 5/03/2019





Diag. L



Deadmans Bay

LOTS 3 - 13 ARE COMMON MARINE AND COASTAL AREAS

S 8/12

Land District: North Auckland

Lots 1 - 13 Being a Subdivision of Part Lot 5 DP 7550

Surveyor: Matthew Keith Adams

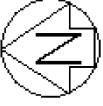
Digitally Generated Plan
Generated on: 06/03/2019 2:20pm Page 17 of 26

Firm: Envivo Limited

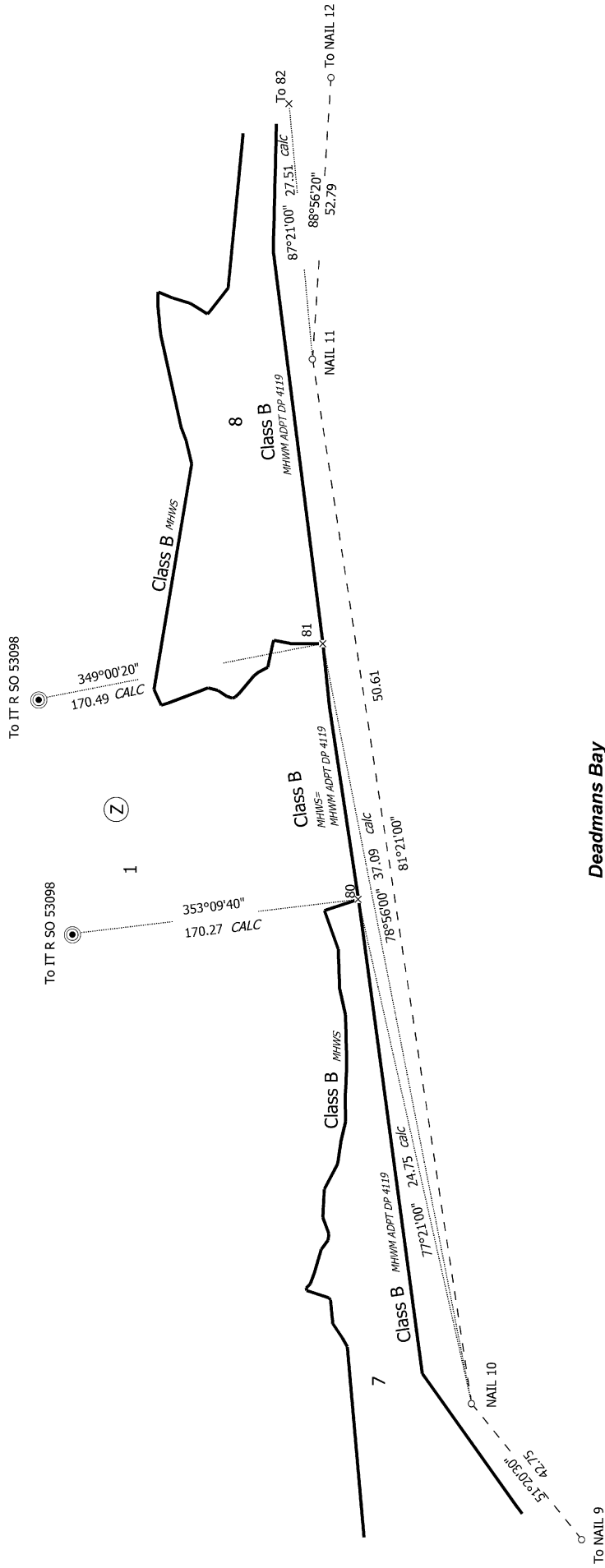
Survey Date: 24/08/2018

CSD Plan
DP 528502

Deposited on: 5/03/2019



Diag. I



LOTS 3 - 13 ARE COMMON MARINE AND COASTAL AREAS

Land District: North Auckland

Digitally Generated Plan

Generated on: 06/03/2019 2:20pm Page 18 of 26

Lots 1 - 13 Being a Subdivision of Part Lot 5 DP 7550

Surveyor: Matthew Keith Adams
Firm: Envivo Limited
Survey Date: 24/08/2018

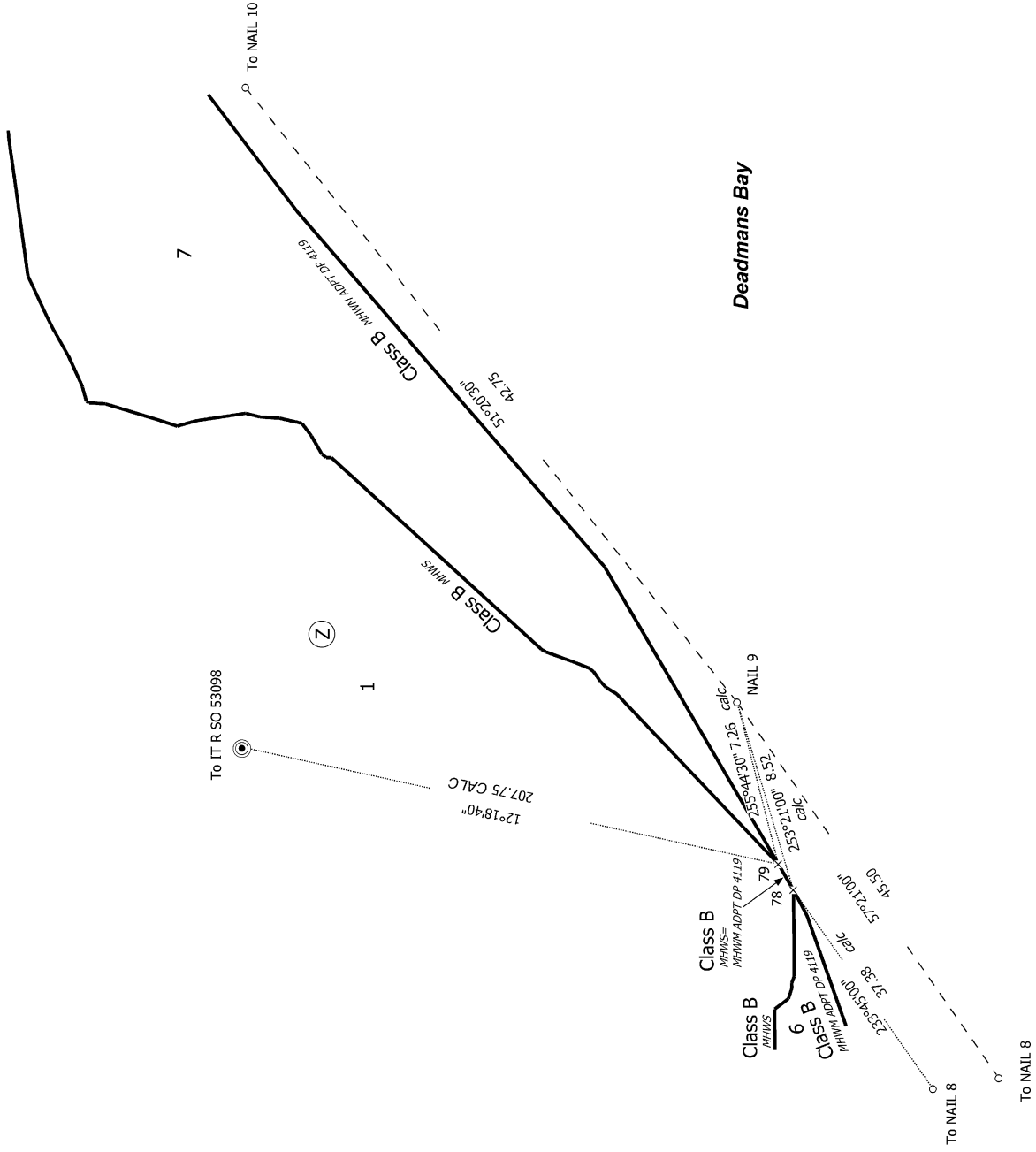
CSD Plan
DP 528502

Deposited on: 5/03/2019

S 9/12



Diag. G



S 10/12

LOTS 3 - 13 ARE COMMON MARINE AND COASTAL AREAS

Land District: North Auckland

Digitally Generated Plan

Generated on: 06/03/2019 2:20pm Page 19 of 26

Lots 1 - 13 Being a Subdivision of Part Lot 5 DP 7550

Surveyor: Matthew Keith Adams

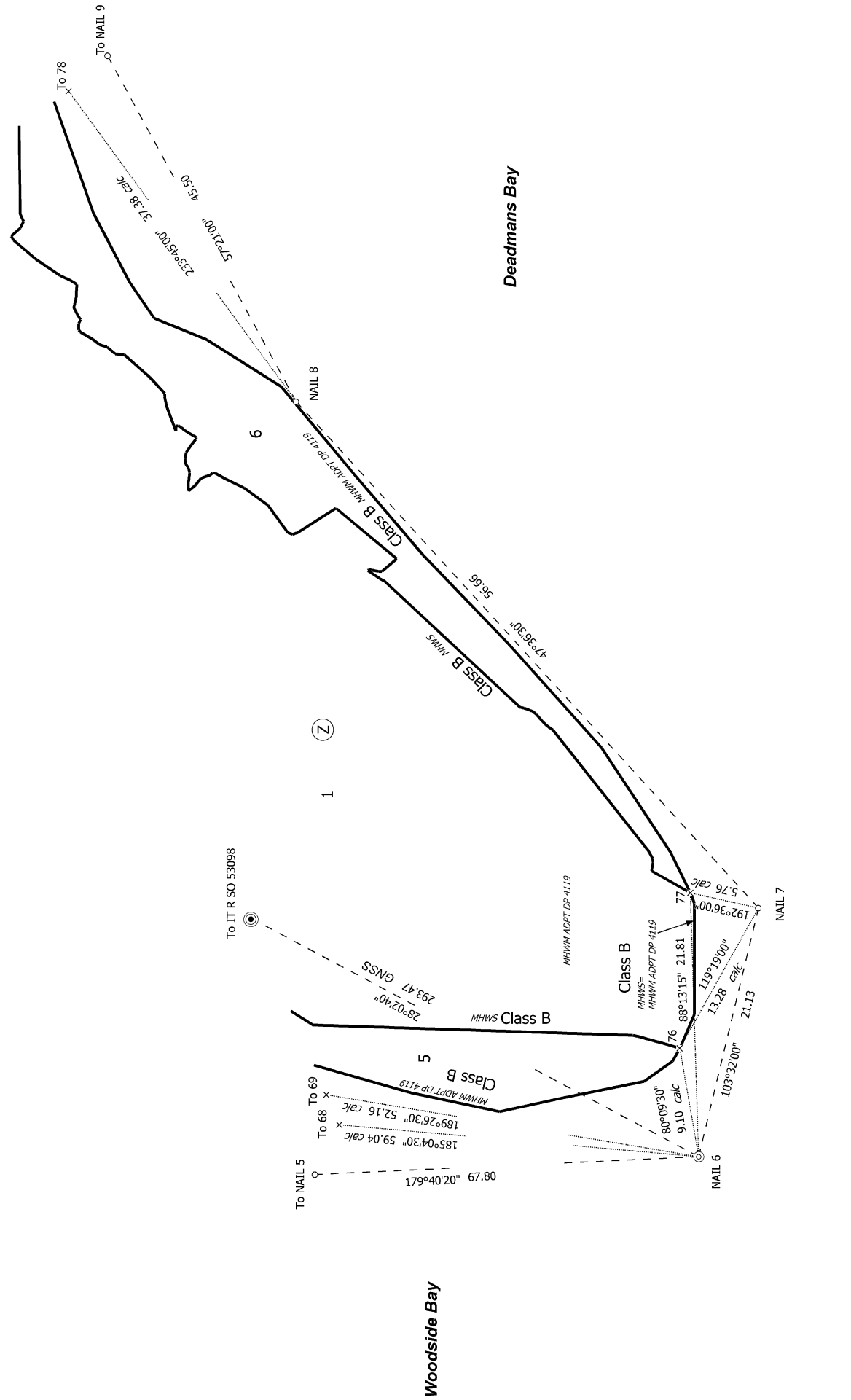
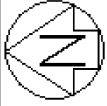
Firm: Envivo Limited

Survey Date: 24/08/2018

CSD Plan
DP 528502

Deposited on: 5/03/2019

Diag. E



S 11/12

LOTS 3 - 13 ARE COMMON MARINE AND COASTAL AREAS

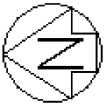
Land District: North Auckland

Digitally Generated Plan
Generated on: 06/03/2019 2:20pm Page 20 of 26

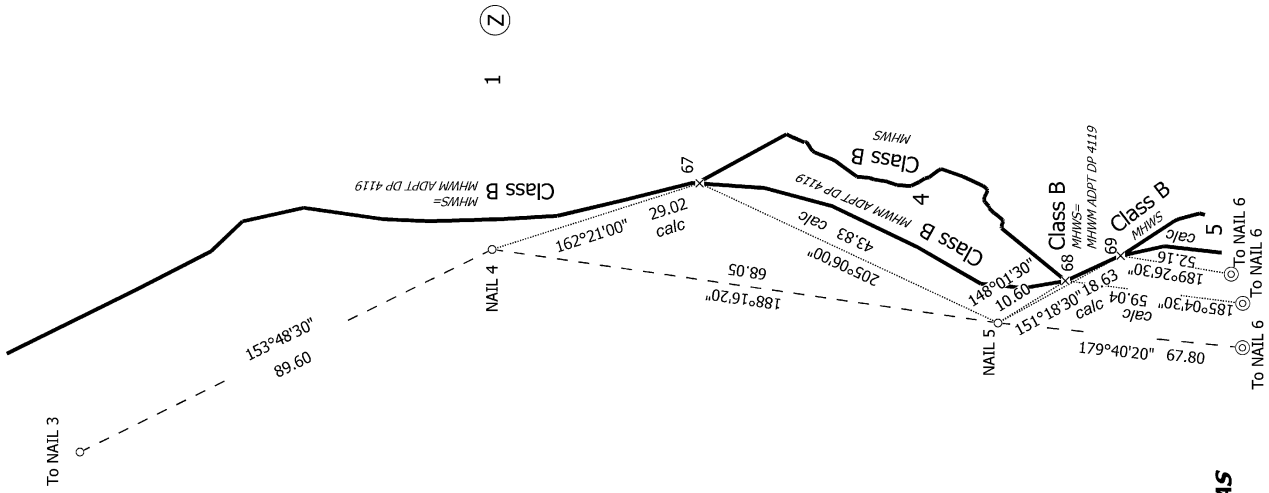
Lots 1 - 13 Being a Subdivision of Part Lot 5 DP 7550

Surveyor: Matthew Keith Adams
Firm: Envivo Limited
Survey Date: 24/08/2018

CSD Plan
DP 528502
Deposited on: 5/03/2019



Diag. D



LOTS 3 - 13 ARE COMMON MARINE AND COASTAL AREAS

Land District: North Auckland

Digitally Generated Plan

Generated on: 06/03/2019 2:20pm Page 21 of 26

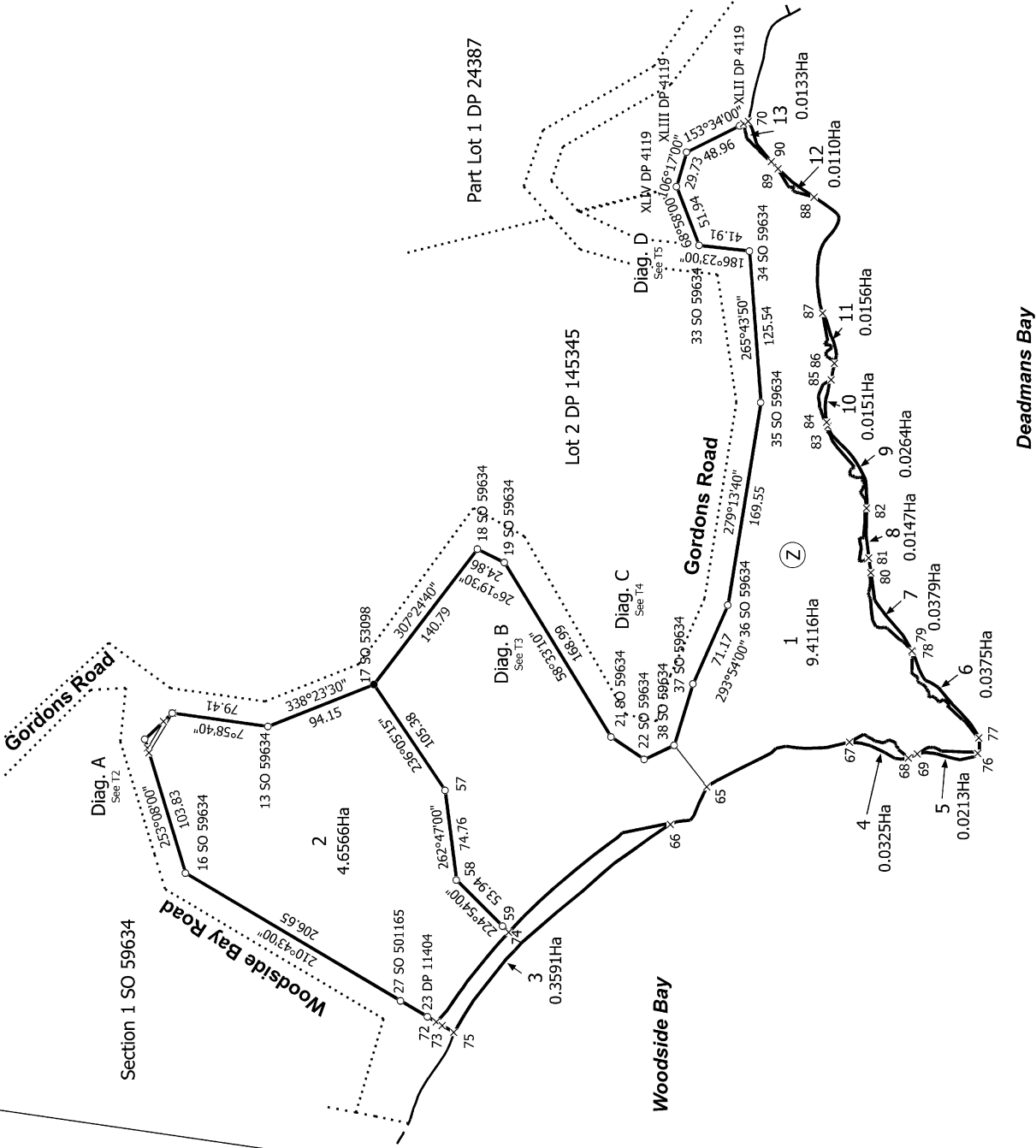
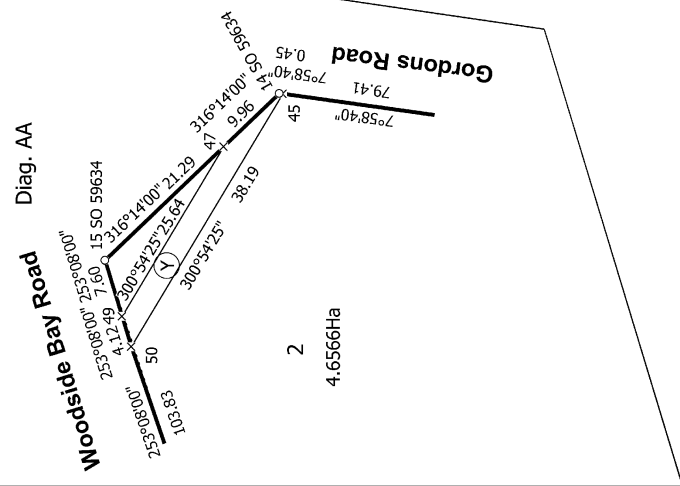
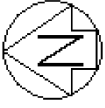
Lots 1 - 13 Being a Subdivision of Part Lot 5 DP 7550

Surveyor: Matthew Keith Adams
Firm: Envivo Limited
Survey Date: 24/08/2018

CSD Plan
DP 528502

Deposited on: 5/03/2019

S 12/12



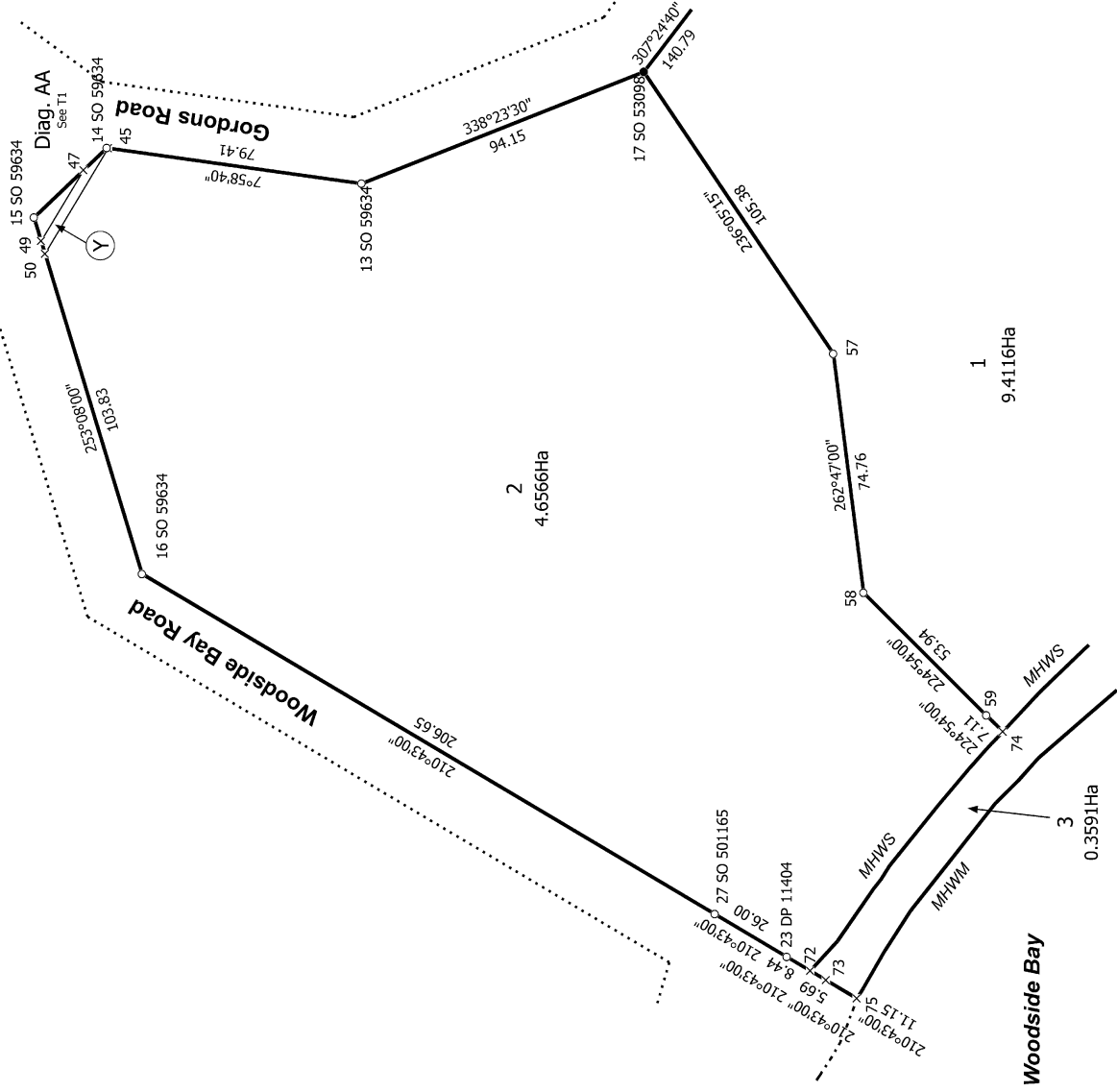
LOTS 3 - 13 ARE COMMON MARINE AND COASTAL AREAS

<p>Land District: North Auckland</p> <p>Digitally Generated Plan</p> <p>Generated on: 06/03/2019 2:20pm Page 22 of 26</p>	<p>Lots 1 - 13 Being a Subdivision of Part Lot 5 DP 7550</p>	<p>Surveyor: Matthew Keith Adams</p> <p>Firm: Envivo Limited</p> <p>Survey Date: 24/08/2018</p>	<p>CSD Plan DP 528502</p> <p>Deposited on: 5/03/2019</p>
--	---	---	--



Diag. A

Section 1 SO 59634



Lot 2 DP 145345

T 2/5

LOTS 3 - 13 ARE COMMON MARINE AND COASTAL AREAS

Land District: North Auckland

Digitally Generated Plan

Generated on: 06/03/2019 2:20pm Page 23 of 26

Lots 1 - 13 Being a Subdivision of Part Lot 5 DP 7550

Surveyor: Matthew Keith Adams

Firm: Envivo Limited

Survey Date: 24/08/2018

CSD Plan
DP 528502

Deposited on: 5/03/2019

Diag. B



Lot 2 DP 145345

307°24'40"
140.79

18 SO 59634

26°19'30"
24.86

19 SO 59634

Gordons Road
58°33'10"
168.99

Lot 2 DP 145345

1
9.4116Ha

21 SO 59634

34°08'00"
33.10

22 SO 59634

334°37'00"
27.36

38 SO 59634

287°02'00"
53.10

221°52'00"
43.83

65

MHWM=MHWS

MHWS

3
0.3591Ha

MHWM

Woodside Bay

66

(Z)

LOTS 3 - 13 ARE COMMON MARINE AND COASTAL AREAS

Land District: North Auckland

Digitally Generated Plan

Generated on: 06/03/2019 2:20pm Page 24 of 26

Lots 1 - 13 Being a Subdivision of Part Lot 5 DP 7550

Surveyor: Matthew Keith Adams
Firm: Envivo Limited
Survey Date: 24/08/2018

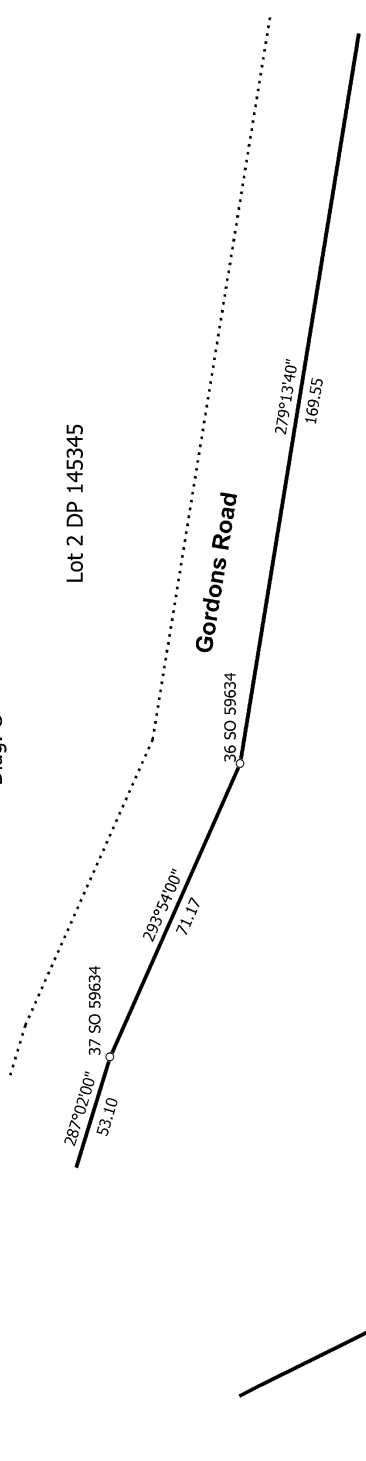
CSD Plan
DP 528502

Deposited on: 5/03/2019

Diag. C

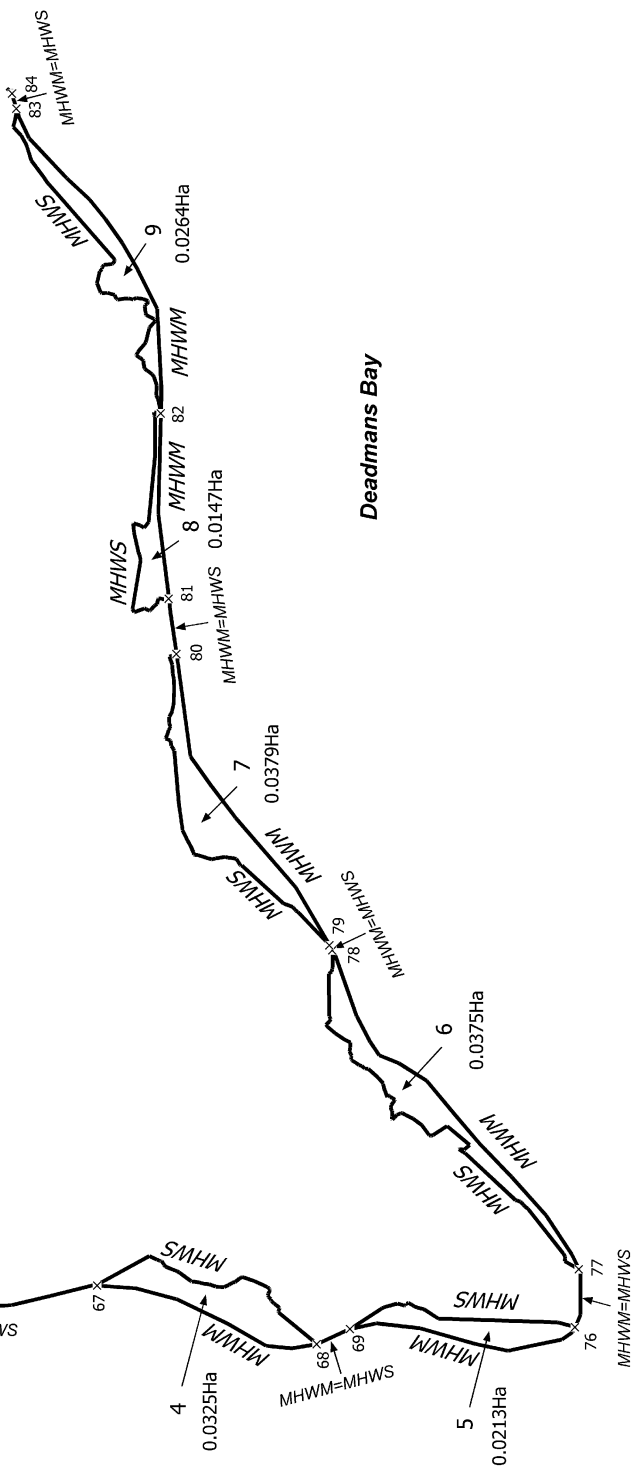
Lot 2 DP 145345

Gordons Road



(Z)

1
9.4116Ha



Woodside Bay

Deadmans Bay

LOTS 3 - 13 ARE COMMON MARINE AND COASTAL AREAS

T 4/5

Land District: North Auckland

Digitally Generated Plan

Generated on: 06/03/2019 2:20pm Page 25 of 26

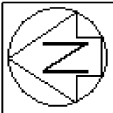
Lots 1 - 13 Being a Subdivision of Part Lot 5 DP 7550

Surveyor: Matthew Keith Adams
Firm: Envivo Limited

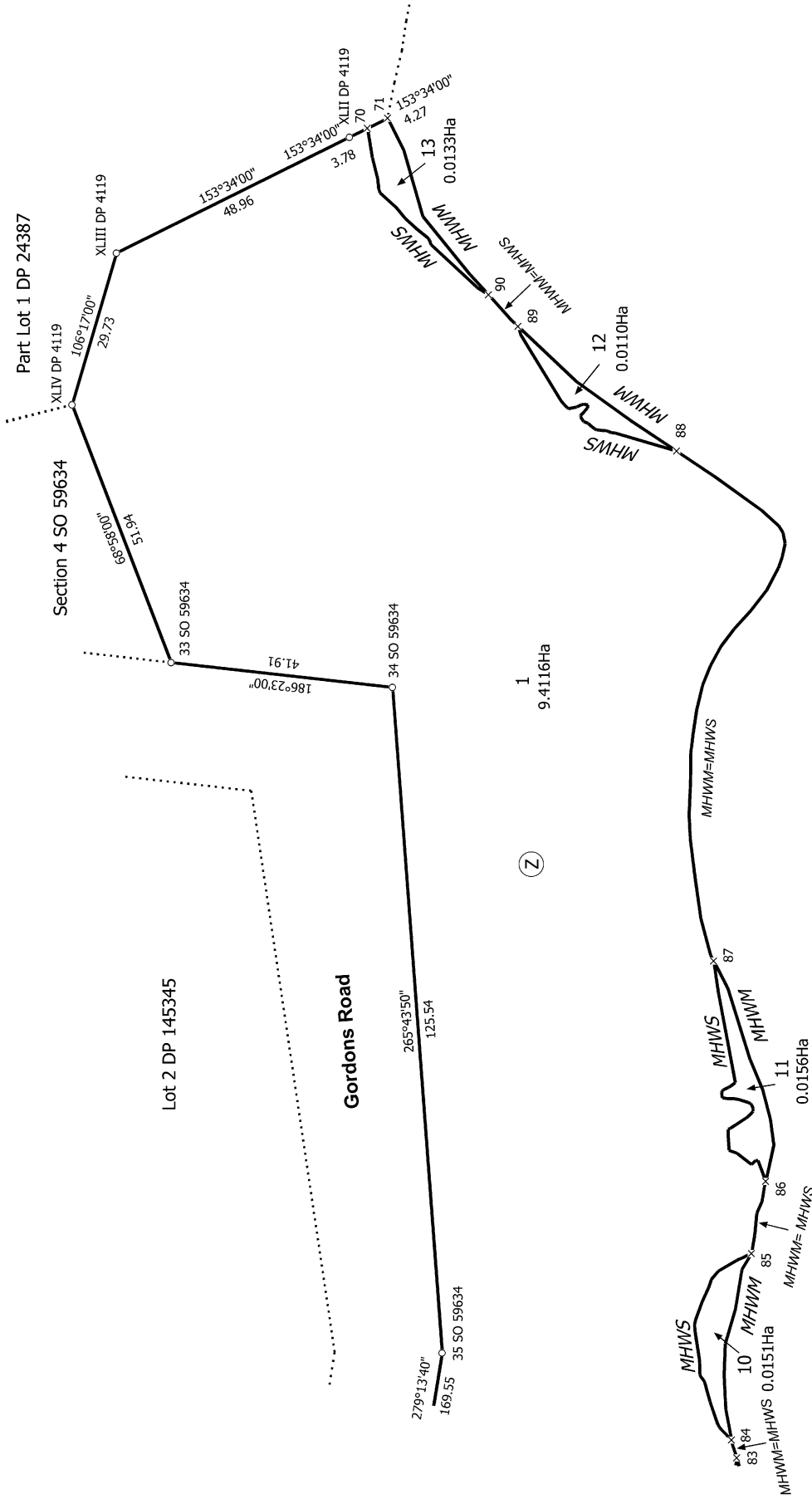
Survey Date: 24/08/2018

**CSD Plan
DP 528502**

Deposited on: 5/03/2019



Diag. D



LOTS 3 - 13 ARE COMMON MARINE AND COASTAL AREAS

T 5/5

Land District: North Auckland

Lots 1 - 13 Being a Subdivision of Part Lot 5 DP 7550

Surveyor: Matthew Keith Adams
Firm: Envivo Limited
Survey Date: 24/08/2018

CSD Plan
DP 528502

Digitally Generated Plan

Generated on: 06/03/2019 2:20pm Page 26 of 26

Deposited on: 5/03/2019