



CSD Plan - DP 514921

Survey Number DP 514921
Surveyor Reference Ballance 17-122
Surveyor Julia Marie Glass
Survey Firm Beyond Ltd
Surveyor Declaration I Julia Marie Glass, being a licensed cadastral surveyor, certify that:
(a) this dataset provided by me and its related survey are accurate, correct and in accordance with the Cadastral Survey Act 2002 and the Rules for Cadastral Survey 2010, and
(b) the survey was undertaken by me or under my personal direction.
Declared on 01 Nov 2017 10:55 AM

Survey Details

Dataset Description Lots 1 and 2 being a subdivision of Part Paeroa East 4B2E2B
Purpose LT Subdivision
Status Deposited **Type** Survey
Land District South Auckland **Survey Class** Class B
Meridional Circuit Bay of Plenty 2000

Survey Dates

Surveyed Date 08/08/2017 **Certified Date** 01/11/2017
Submitted Date 01/11/2017 10:55:17 **Survey Approval Date** 08/11/2017
Deposit Date 01/11/2017

Referenced Surveys

Survey Number	Land District	Bearing Correction
DP 414898	South Auckland	0°00'00"
SO 22506	South Auckland	0°00'00"
ML 8305	South Auckland	0°00'00"
SO 42008	South Auckland	0°00'00"
SO 56448	South Auckland	0°00'00"
DP 10855	South Auckland	0°00'00"
ML 18472	South Auckland	0°00'00"
SO 49747	South Auckland	0°00'00"
SO 49444	South Auckland	0°00'00"
DPS 47272	South Auckland	0°00'00"
DP 349847	South Auckland	0°00'00"
ML 7854	South Auckland	0°00'00"
SO 34844	South Auckland	0°00'00"

Territorial Authorities

Rotorua District

Comprised In

CT SA6B/1048



CSD Plan - DP 514921

Created Parcels

Parcels	Parcel Intent	Area	CT Reference
Lot 1 Deposited Plan 514921	Fee Simple Title	3.9902 Ha	799710
Lot 2 Deposited Plan 514921	Fee Simple Title	19.2379 Ha	799711
Area A Deposited Plan 514921	Easement		
Area B Deposited Plan 514921	Easement		
Total Area		<hr/> 23.2281 Ha	

Mark and Vector

Survey Number DP 514921

Meridional Circuit Bay of Plenty 2000

From	To	Code	Bearing	Adpt Surv	Distance	Adpt Surv
IT XXXIV SO 56448	IB 3 DP 349847	ob23	44°10'50"	M	270.65	M
IB 3 DP 349847	IB 4 DP 349847	ob26	44°10'50"	M	123.84	M
IB 4 DP 349847	IS III ML 18472	ob46	280°10'55"	M	623.66	M
IS III ML 18472	IT ML 18472	ob48	279°17'20"	M	101.54	M
IT ML 18472	IS IIA SO 49747	ob51	182°00'00"	M	186.13	M
IS IIA SO 49747	PRM D SO 49444	ob53	181°55'20"	M	163.01	M
PRM D SO 49444	IT I SO 60780	ob62	101°19'00"	M	11.22	M
IT I SO 60780	IT I DP 514921	ob56	94°54'10"	M	237.32	M
IT I DP 514921	IT XXXIV SO 56448	ob58	100°36'40"	M	207.14	M
PRM D SO 49444	PRM E SO 49443	ob63	357°39'30"	M	446.33	M
PRM E SO 49443	IT ML 18472	ob66	162°42'00"	M	101.63	M
IT I SO 60780	PRM E SO 49443	ob57	356°16'00"	M	449.10	M
IS IIA SO 49747	IT IXA DPS 47272	ob54	81°36'10"	M	284.79	M
IT IXA DPS 47272	IT IX DPS 47272	ob67	210°03'20"	M	34.91	M
IT IX DPS 47272	IT XXXIV SO 56448	ob69	142°19'40"	M	296.78	M
IT ML 18472	PEG SO 22506	ob52	72°18'00"	A ML 18472	1.07	A ML 18472
PEG SO 22506	IS III ML 18472	ob60	99°33'30"	A ML 18472	100.58	A ML 18472
IT XXXIV SO 56448	IT XXXV SO 56448	ob24	332°58'50"	A DPS 47272	296.16	A DPS 47272
IT XXXV SO 56448	IT IXA DPS 47272	ob72	272°32'30"	A DPS 47272	29.35	A DPS 47272
IT XXXV SO 56448	IT IX DPS 47272	ob73	238°17'50"	A DPS 47272	55.04	A DPS 47272
IB 4 DP 349847	IB 1 DP 349847	ob47	273°17'00"	A DP 349847	335.51	A DP 349847
IB 1 DP 349847	IT XXXIV SO 56448	ob74	168°45'50"	A DP 349847	308.01	A DP 349847
PRM D SO 49444	IB III SO 49747	ob64	0°36'10"	A DPS 47272	344.41	A DPS 47272
IB III SO 49747	IT ML 18472	ob10	61°23'00"	A SO 49747	9.51	A SO 49747
IB 3 DP 349847	PEG 6 DP 349847	ob27	139°00'40"	M	184.59	M
PEG 6 DP 349847	PEG DP 10855	ob75	118°52'30"	A SO 34844	155.86	A SO 34844
PEG DP 10855	PEG XIV ML 7854	ob78	197°30'30"	A SO 34844	29.81	A DP 10855
PEG XIV ML 7854	PEG XV ML 7854	ob28	66°27'30"	A SO 34844	54.66	A DP 10855
PEG XV ML 7854	PEG XVI ML 7854	ob29	335°54'30"	A SO 34844	64.49	A DP 10855
PEG XVI ML 7854	PEG XVII ML 7854	ob30	279°29'30"	A SO 34844	130.74	A DP 10855
PEG XVII ML 7854	PEG XVIII ML 7854	ob31	351°23'30"	A SO 34844	187.91	A DP 10855
PEG XVIII ML 7854	PEG XIX ML 7854	ob32	110°42'30"	A SO 34844	215.39	A DP 10855
PEG XIX ML 7854	PEG XX ML 7854	ob33	9°13'30"	A SO 34844	103.18	A DP 10855
PEG XX ML 7854	IB 5 DP 349847	ob34	283°44'00"	A DP 349847	18.58	A DP 349847
IB 5 DP 349847	IB 4 DP 349847	ob36	273°25'40"	A DP 349847	229.20	A DP 349847
PEG XX ML 7854	PEG ML 7854	ob35	205°02'30"	A SO 42008	27.78	A ML 7854
PEG SO 42008	NAIL 10 DP 349847	ob140	279°35'20"	A DP 349847	117.85	A DP 349847
NAIL 10 DP 349847	IB 4 DP 349847	ob39	289°02'00"	M	21.41	M
NAIL 10 DP 349847	UNMK DP 349847	ob40	279°35'20"	A DP 349847	8.79	A DP 349847
UNMK DP 349847	PEG ML 18472	ob85	279°35'20"	A DP 349847	328.93	A DP 349847
PEG ML 18472	IB 1 DP 349847	ob41	216°29'00"	A DP 349847	37.39	A DP 349847
PEG SO 22506	PEG ML 8305	ob61	182°30'50"	A ML 18472	10.13	A ML 18472

Mark and Vector

Survey Number DP 514921

Meridional Circuit Bay of Plenty 2000

From	To	Code	Bearing	Adpt Surv	Distance	Adpt Surv
PEG ML 8305	PEG SO 49747	ob18	279°33'30"	A SO 49747	0.78	A SO 49747
PEG SO 49747	IB III SO 49747	ob16	302°01'00"	A SO 49747	9.61	A SO 49747
IS III ML 18472	PEG SO 22506	ob49	99°33'30"	A ML 18472	215.69	A ML 18472
PEG SO 22506	PEG DP 7964	ob19	144°32'00"	A ML 18472	14.23	A ML 18472
PEG DP 7964	UNMK DPS 47272	ob20	279°33'30"	A DPS 47272	90.22	A DPS 47272
UNMK DPS 47272	UNMK DPS 47272	ob92	279°33'30"	A DPS 47272	13.99	A DPS 47272
UNMK DPS 47272	PEG ML 18472	ob94	279°33'30"	A DPS 47272	120.30	A DPS 47272
PEG ML 18472	PEG ML 8305	ob42	279°33'30"	A ML 18472	100.58	A ML 18472
IS III ML 18472	PEG ML 18472	ob50	182°30'50"	A ML 18472	10.13	A ML 18472
PRM D SO 49444	PEG SO 49747	ob65	12°07'00"	A SO 49747	34.65	A SO 49747
PEG SO 49747	PEG H SO 49747	ob79	4°35'50"	A SO 49747	118.19	A SO 49747
PEG H SO 49747	PEG 3 DP 514921	ob4	32°33'00"	A SO 49747	17.25	A SO 49747
PEG 3 DP 514921	UNMK 39 DP 514921	ob5	357°08'00"	A SO 49747	9.38	C
UNMK 39 DP 514921	PEG C SO 49747	ob9	357°08'00"	A SO 49747	8.56	C
PEG C SO 49747	PEG D SO 49747	ob6	334°11'00"	A SO 49747	16.55	A SO 49747
PEG D SO 49747	IS IIA SO 49747	ob7	199°03'00"	A SO 49747	38.19	A SO 49747
PEG D SO 49747	PEG IIE SO 49747	ob8	356°16'30"	A SO 49747	48.32	A SO 49747
PEG IIE SO 49747	PEG IIF SO 49747	ob11	4°41'00"	A SO 49747	7.35	A SO 49747
PEG IIF SO 49747	PEG SO 49747	ob12	357°31'30"	A SO 49747	43.67	A SO 49747
PEG SO 49747	UNMK SO 49747	ob13	357°31'30"	A SO 49747	32.30	A SO 49747
UNMK SO 49747	PEG SO 49747	ob15	357°31'30"	A SO 49747	8.83	A SO 49747
PEG SO 49747	PEG IV ML 18472	ob14	99°33'30"	A ML 18472	97.75	C
PEG IV ML 18472	PEG ML 18472	ob17	2°30'50"	A ML 18472	40.54	A ML 18472
PEG DP 7964	PEG ML 18472	ob21	99°35'20"	A DP 349847	81.25	A DP 349847
PEG SO 49747	PEG 4 DP 514921	ob80	99°32'50"	A SO 49747	235.13	C
PEG 4 DP 514921	PEG DP 10855	ob22	99°32'50"	A SO 49747	154.24	C
PEG DP 10855	PEG I DP 10855	ob0	182°50'00"	A DP 10855	20.26	A DP 10855
PEG I DP 10855	PEG SO 49444	ob2	279°32'50"	A DP 10855	377.79	A SO 49444
PEG SO 49444	PRM D SO 49444	ob3	236°36'00"	A SO 49444	21.17	A SO 49444
PEG DP 10855	UNMK DPS 47272	ob1	86°09'30"	A DPS 47272	86.72	A DPS 47272
UNMK DPS 47272	UNMK DPS 47272	ob90	86°09'30"	A DPS 47272	12.00	A DPS 47272
UNMK DPS 47272	PEG 6a DP 349847	ob91	86°09'30"	A DPS 47272	258.77	C
PEG 6a DP 349847	PEG 6 DP 349847	ob84	86°09'30"	A DP 349847	13.00	A DP 349847
IS IIA SO 49747	PEG 3 DP 514921	ob55	80°57'00"	M	20.84	M
IT I DP 514921	PEG 4 DP 514921	ob59	334°23'00"	M	19.23	M
IT IXA DPS 47272	PEG ML 18472	ob68	61°59'40"	M	142.80	M
PEG 6 DP 349847	PEG 7 DP 349847	ob76	338°08'00"	A DP 349847	13.75	A DP 349847
PEG 7 DP 349847	PEG 8 DP 349847	ob81	327°01'20"	A DP 349847	86.57	A DP 349847
PEG 8 DP 349847	PEG 9 DP 349847	ob82	1°28'40"	A DP 349847	83.33	A DP 349847
PEG 9 DP 349847	NAIL 10 DP 349847	ob83	34°07'20"	A DP 349847	63.41	A DP 349847
UNMK DP 349847	UNMK DP 349847	ob86	214°07'20"	A DP 349847	62.10	A DP 349847
UNMK DP 349847	UNMK DP 349847	ob87	181°28'40"	A DP 349847	88.16	A DP 349847
UNMK DP 349847	PEG 7a DP 349847	ob88	147°01'20"	A DP 349847	87.19	A DP 349847

Mark and Vector

Survey Number DP 514921

Meridional Circuit Bay of Plenty 2000

From	To	Code	Bearing	Adpt Surv	Distance	Adpt Surv
PEG 7a DP 349847	PEG 6a DP 349847	ob89	180°42'00"	A DP 349847	10.83	A DP 349847
UNMK DPS 47272	UNMK DPS 47272	ob93	158°35'30"	A DPS 47272	47.94	A DPS 47272
UNMK DPS 47272	UNMK DPS 47272	ob96	165°06'30"	A DPS 47272	56.97	A DPS 47272
UNMK DPS 47272	UNMK DPS 47272	ob97	135°23'00"	A DPS 47272	302.69	A DPS 47272
UNMK DPS 47272	UNMK DPS 47272	ob98	174°35'00"	A DPS 47272	9.03	A DPS 47272
UNMK DPS 47272	UNMK DPS 47272	ob95	158°35'30"	A DPS 47272	54.46	A DPS 47272
UNMK DPS 47272	UNMK DPS 47272	ob99	165°06'30"	A DPS 47272	59.47	A DPS 47272
UNMK DPS 47272	UNMK DPS 47272	ob100	135°23'00"	A DPS 47272	301.60	A DPS 47272
UNMK DPS 47272	UNMK DPS 47272	ob101	174°35'00"	A DPS 47272	4.43	A DPS 47272
IT IX DPS 47272	PEG 2 DP 514921	ob70	335°09'00"	M	19.54	M
IT IX DPS 47272	PEG 1 DP 514921	ob71	319°37'00"	M	35.11	M
PEG 2 DP 514921	PEG 4 DP 514921	ob43	186°28'00"	C	198.42	C
PEG 1 DP 514921	PEG 2 DP 514921	ob44	121°48'00"	C	17.10	C
PEG 1 DP 514921	UNMK 5 DP 514921	ob45	301°48'00"	C	7.45	C
UNMK 5 DP 514921	UNMK 6 DP 514921	ob136	306°45'00"	C	12.13	C
UNMK 6 DP 514921	UNMK 7 DP 514921	ob103	345°15'00"	C	12.16	C
UNMK 7 DP 514921	UNMK 8 DP 514921	ob104	245°02'00"	C	12.36	C
UNMK 8 DP 514921	UNMK 9 DP 514921	ob105	219°06'00"	C	10.91	C
UNMK 9 DP 514921	UNMK 10 DP 514921	ob106	129°11'00"	C	11.50	C
UNMK 10 DP 514921	UNMK 11 DP 514921	ob107	198°32'00"	C	7.70	C
UNMK 11 DP 514921	UNMK 12 DP 514921	ob108	278°44'00"	C	9.62	C
UNMK 12 DP 514921	UNMK 13 DP 514921	ob109	258°31'00"	C	6.23	C
UNMK 13 DP 514921	UNMK 14 DP 514921	ob110	186°41'00"	C	11.03	C
UNMK 14 DP 514921	UNMK 15 DP 514921	ob111	156°19'00"	C	13.23	C
UNMK 15 DP 514921	UNMK 16 DP 514921	ob112	205°16'00"	C	8.55	C
UNMK 16 DP 514921	UNMK 17 DP 514921	ob113	261°57'00"	C	16.70	C
UNMK 17 DP 514921	UNMK 18 DP 514921	ob114	290°10'00"	C	22.23	C
UNMK 18 DP 514921	UNMK 19 DP 514921	ob115	350°03'00"	C	4.57	C
UNMK 19 DP 514921	UNMK 20 DP 514921	ob116	23°30'00"	C	7.62	C
UNMK 20 DP 514921	UNMK 21 DP 514921	ob117	329°35'00"	C	6.27	C
UNMK 21 DP 514921	UNMK 22 DP 514921	ob118	243°04'00"	C	9.94	C
UNMK 22 DP 514921	UNMK 23 DP 514921	ob119	172°21'00"	C	8.92	C
UNMK 23 DP 514921	UNMK 24 DP 514921	ob120	211°56'00"	C	25.29	C
UNMK 24 DP 514921	UNMK 25 DP 514921	ob121	294°39'00"	C	18.15	C
UNMK 25 DP 514921	UNMK 26 DP 514921	ob122	0°12'00"	C	7.27	C
UNMK 26 DP 514921	UNMK 27 DP 514921	ob123	296°36'00"	C	21.19	C
UNMK 27 DP 514921	UNMK 28 DP 514921	ob124	339°22'00"	C	9.42	C
UNMK 28 DP 514921	UNMK 29 DP 514921	ob125	12°25'00"	C	6.64	C
UNMK 29 DP 514921	UNMK 30 DP 514921	ob126	310°02'00"	C	9.85	C
UNMK 30 DP 514921	UNMK 31 DP 514921	ob127	234°16'00"	C	8.43	C
UNMK 31 DP 514921	UNMK 32 DP 514921	ob128	256°02'00"	C	15.42	C
UNMK 32 DP 514921	UNMK 33 DP 514921	ob129	201°27'00"	C	8.31	C
UNMK 33 DP 514921	UNMK 34 DP 514921	ob130	245°22'00"	C	13.68	C

Mark and Vector

Survey Number DP 514921

Meridional Circuit Bay of Plenty 2000

From	To	Code	Bearing	Adpt Surv	Distance	Adpt Surv
UNMK 34 DP 514921	UNMK 35 DP 514921	ob131	293°38'00"	C	5.96	C
UNMK 35 DP 514921	UNMK 36 DP 514921	ob132	225°02'00"	C	4.22	C
UNMK 36 DP 514921	UNMK 37 DP 514921	ob133	278°08'00"	C	8.51	C
UNMK 37 DP 514921	UNMK 38 DP 514921	ob134	271°26'00"	C	7.05	C
UNMK 38 DP 514921	UNMK 39 DP 514921	ob135	260°35'00"	C	10.09	C
PEG ML 7854	UNMK ML 7854	ob37	99°35'20"	A DP 349847	3.64	A ML 18472
IT XXXIV SO 56448	IT XXXIII SO 56448	ob25	152°27'40"	A SO 56448	482.17	A SO 56448
IT XXXIII SO 56448	IT XXXII SO 56448	ob137	165°48'35"	A SO 56448	284.26	A SO 56448
IT XXXII SO 56448	RM XXXI SO 56448	ob138	164°33'35"	A SO 56448	260.12	A SO 56448
RM XXXI SO 56448	32 KAIRURU	ob139	320°59'15"	A SO 56448	3,075.49	A SO 56448
UNMK ML 7854	UNMK ML 7854	ob102	6°13'00"	C	281.59	C
PEG ML 7854	PEG SO 42008	ob38	279°35'20"	A SO 42008	100.06	A DP 349847
PEG DP 10855	UNMK ML 7854	ob77	118°52'30"	A SO 34844	42.25	A SO 34844

*** End of Report ***



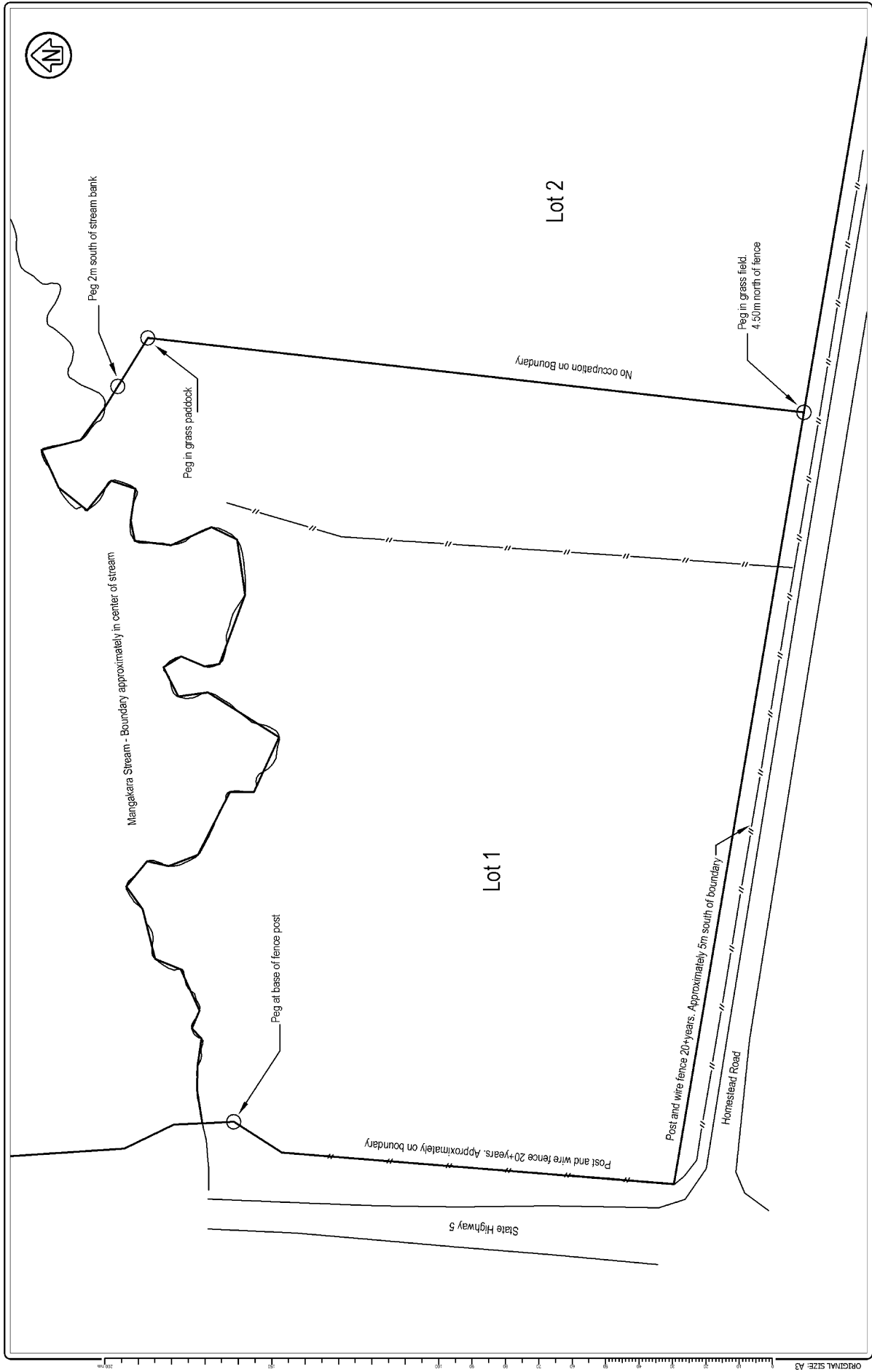
Plan Reference: DP 514921

Schedule of Existing Easements in Gross			
Purpose	Servient Tenement	Shown	Creating Document Reference
Gas Pipeline Right	Lot 2	A	H828889.1

Schedule of Existing Easements			
Purpose	Servient Tenement	Shown	Creating Document Reference
Right to Convey Water, Electricity, and Telecommunications, Right to Drain Sewage, Right of Way	Lot 2	B	7183037.1

Amalgamation Condition
That Lot 2 DP 514921 and Part Paeroa East 4B2E2B Block be held in the same computer register. See request number 1392514.

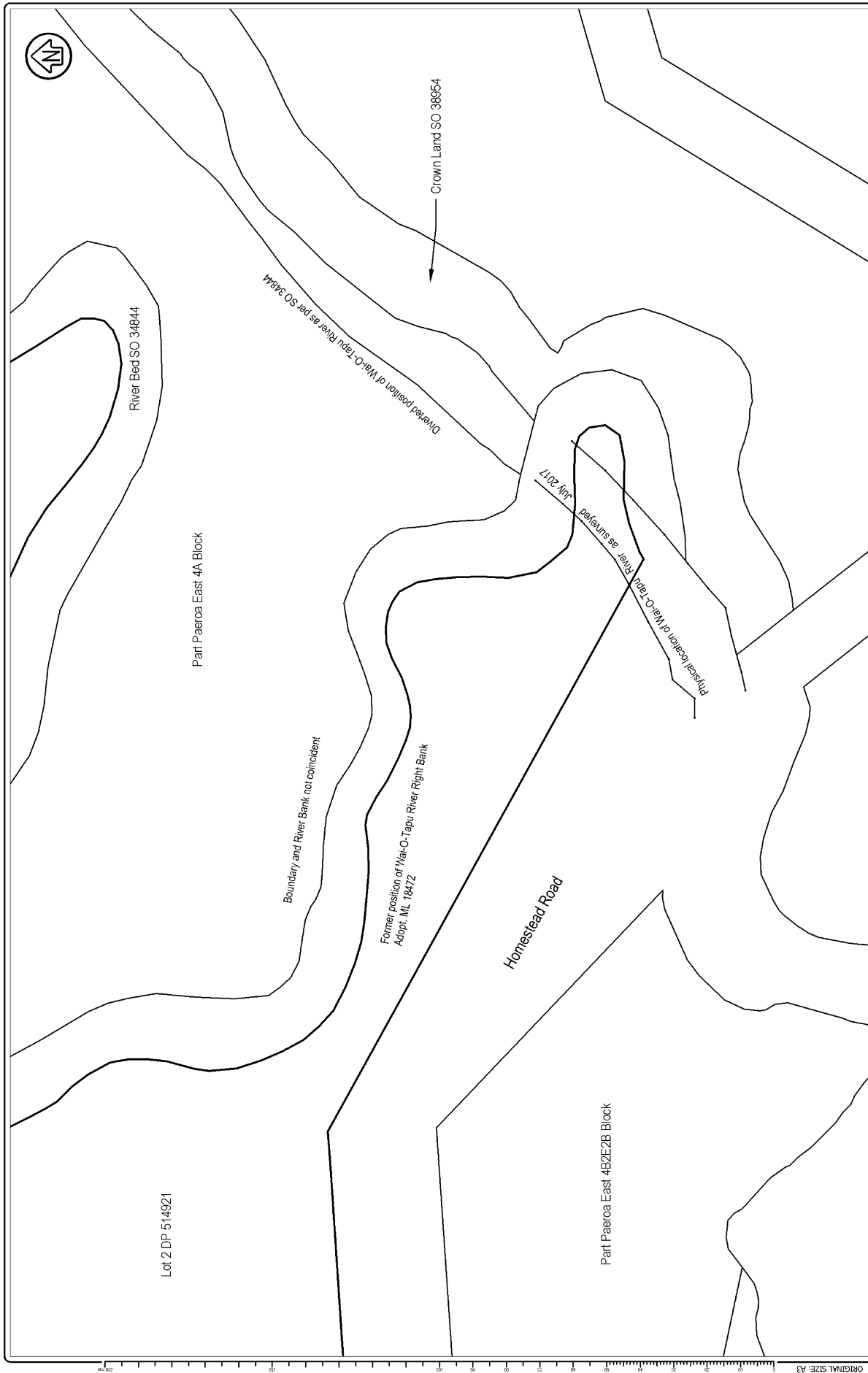
Occupation Diagram



OCCUPATION DIAGRAM FOR DP 514921



Occupation Diagram

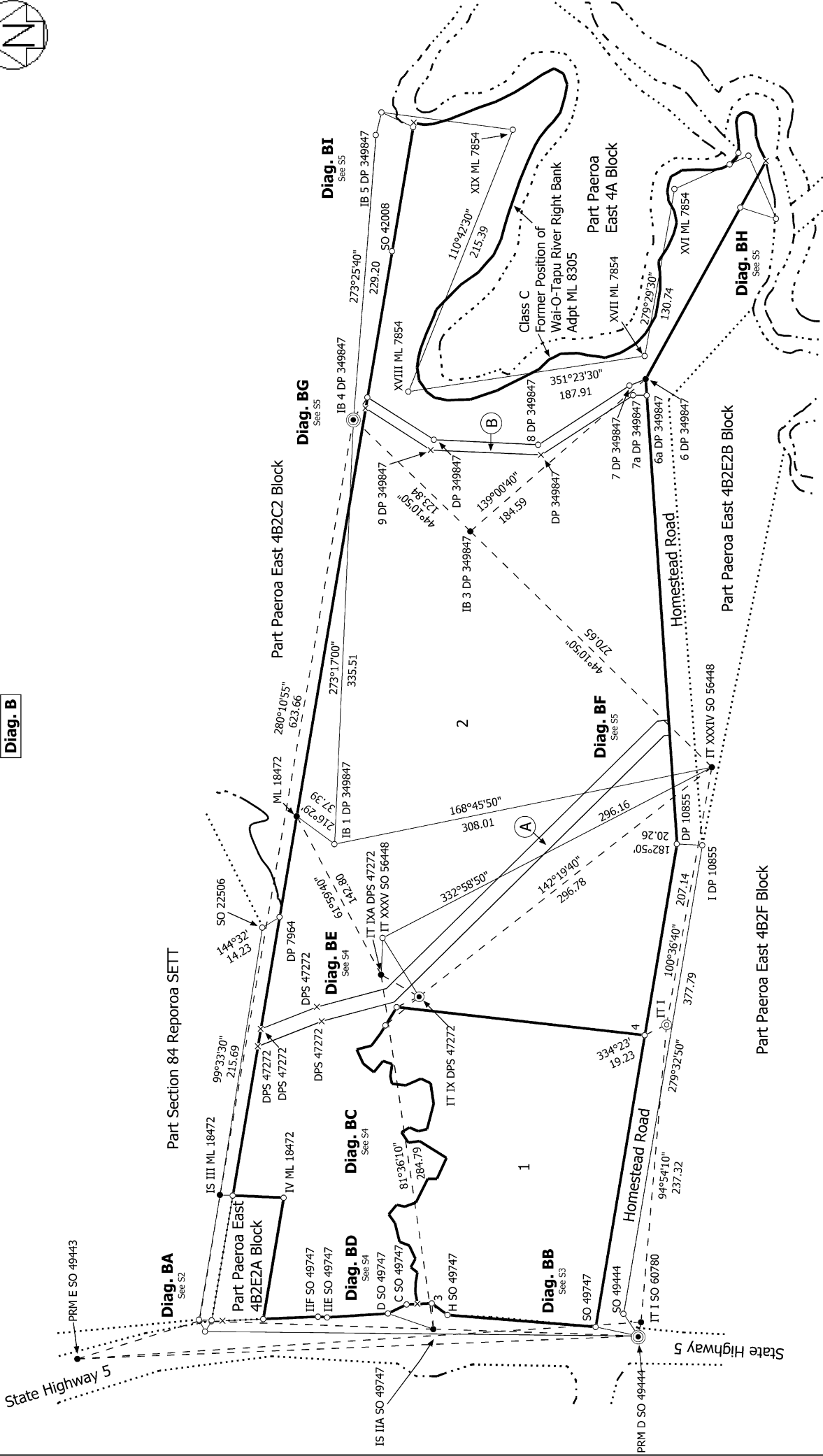


OCCUPATION DIAGRAM FOR DP 514921

BEYOND
surveying planning engineering



Diag. B



Land District: South Auckland
 Digitally Generated Plan
 Generated on: 15/11/2017 4:54pm Page 10 of 16

Lots 1 and 2 being a subdivision of Part Paeroa East 4B2E2B

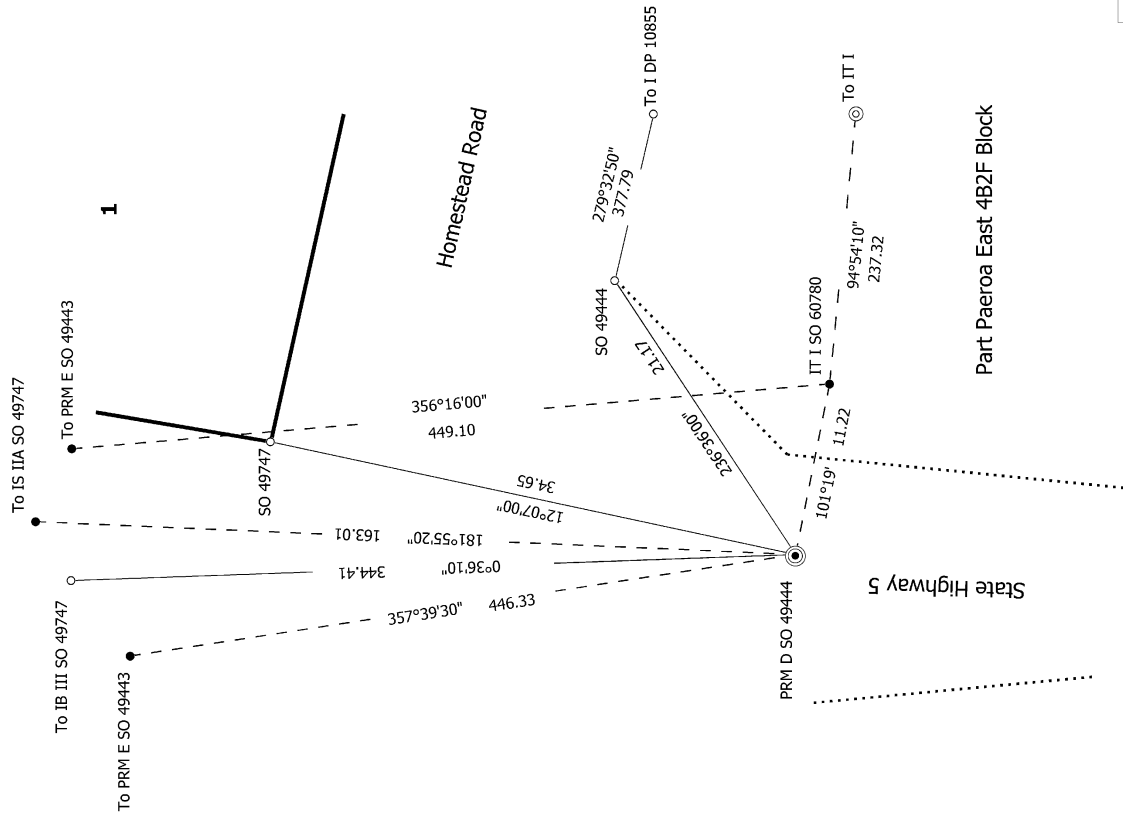
Surveyor: Julia Marie Glass
 Firm: Beyond Ltd
 Survey Date: 8/08/2017

CSD Plan
 DP 514921

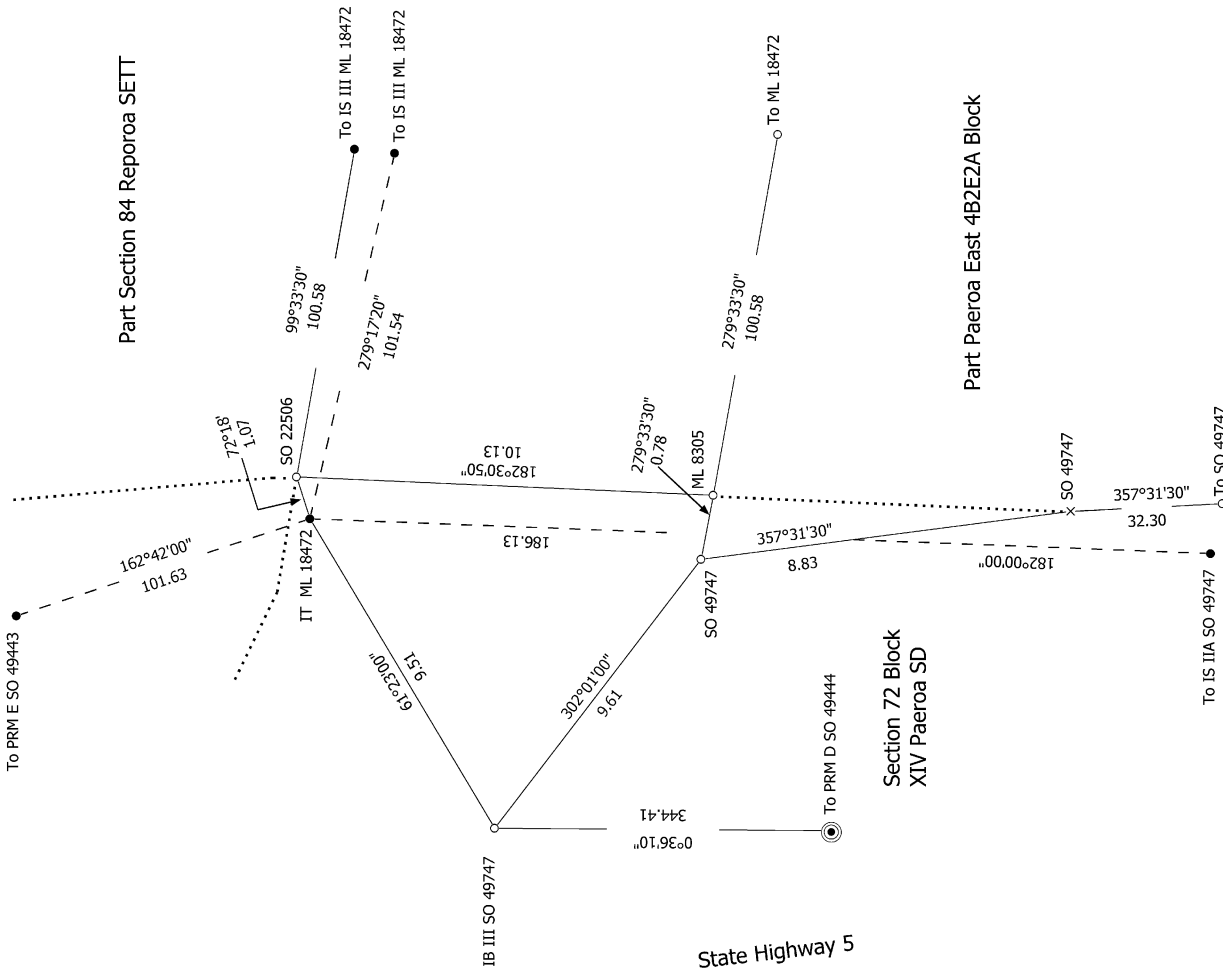
Deposited on: 1/11/2017



Diag. BB
Not to scale



Diag. BAA
Not to scale



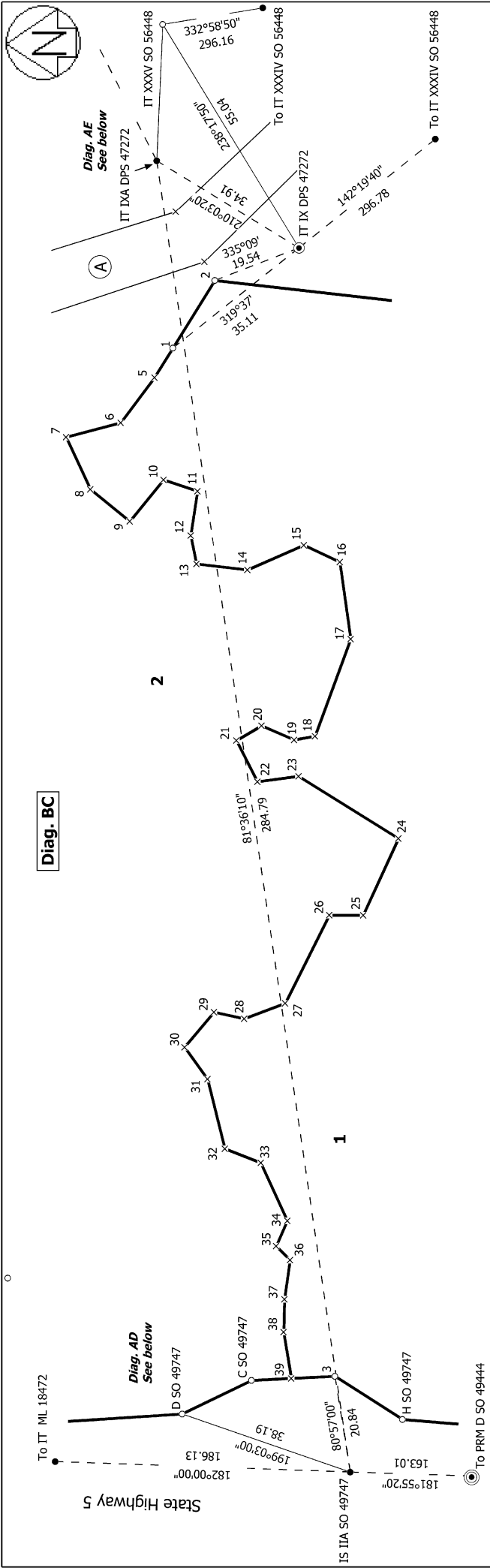
S 3/5

Land District: South Auckland
Digitally Generated Plan
Generated on: 15/11/2017 4:54pm Page 12 of 16

Surveyor: Julia Marie Glass
Firm: Beyond Ltd
Survey Date: 8/08/2017

Lots 1 and 2 being a subdivision of Part Paeroa East 4B2E2B

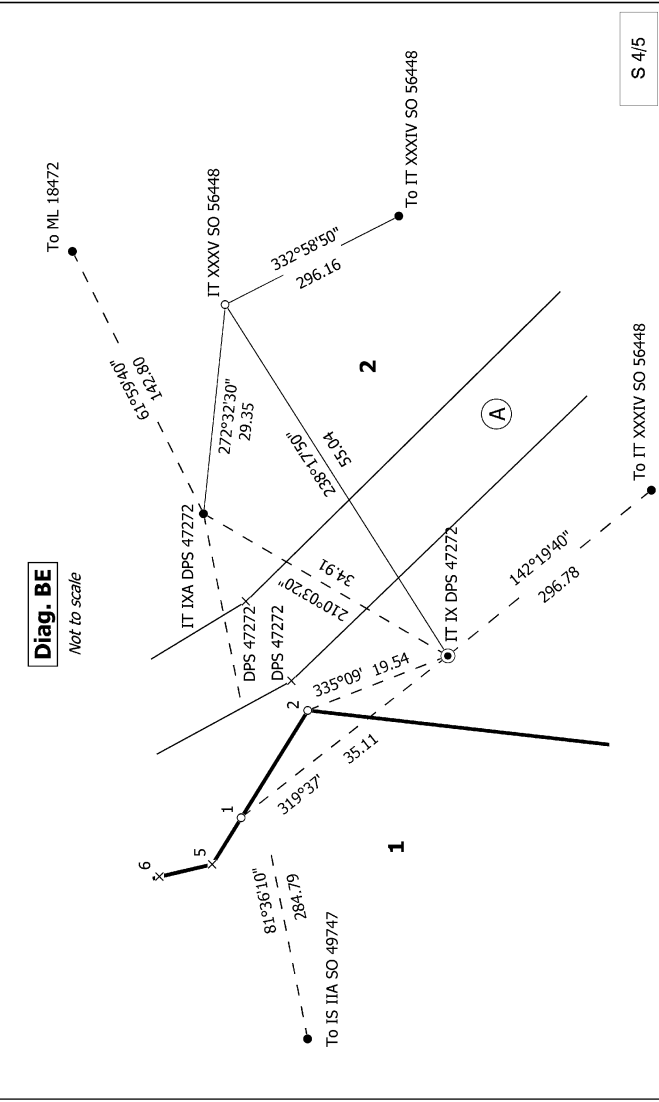
CSD Plan
DP 514921
Deposited on: 1/11/2017



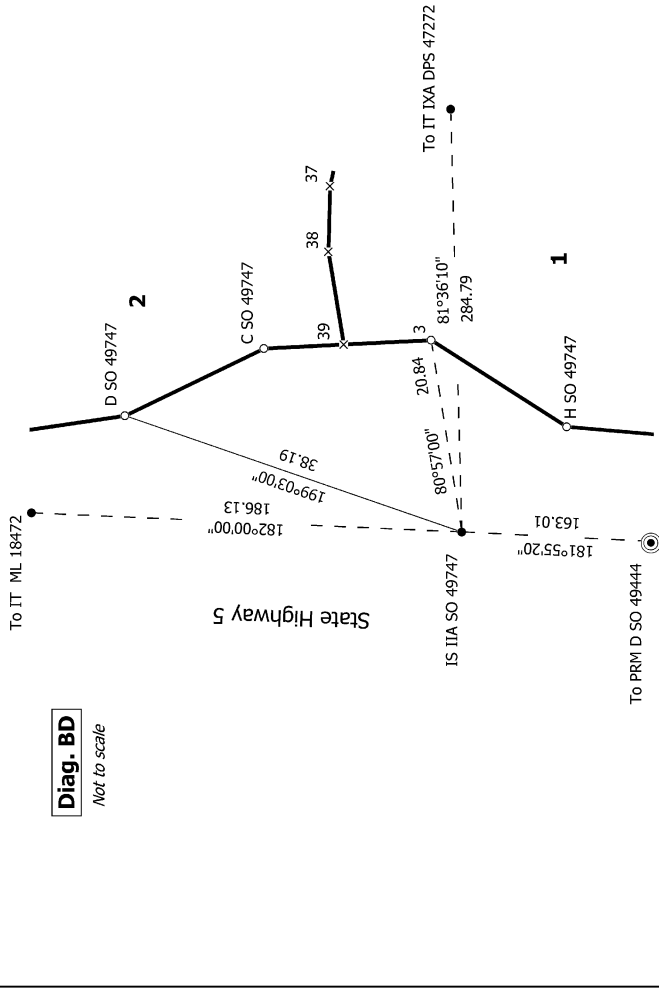
Diag. BC

Diag. AD
See below

Diag. AE
See below

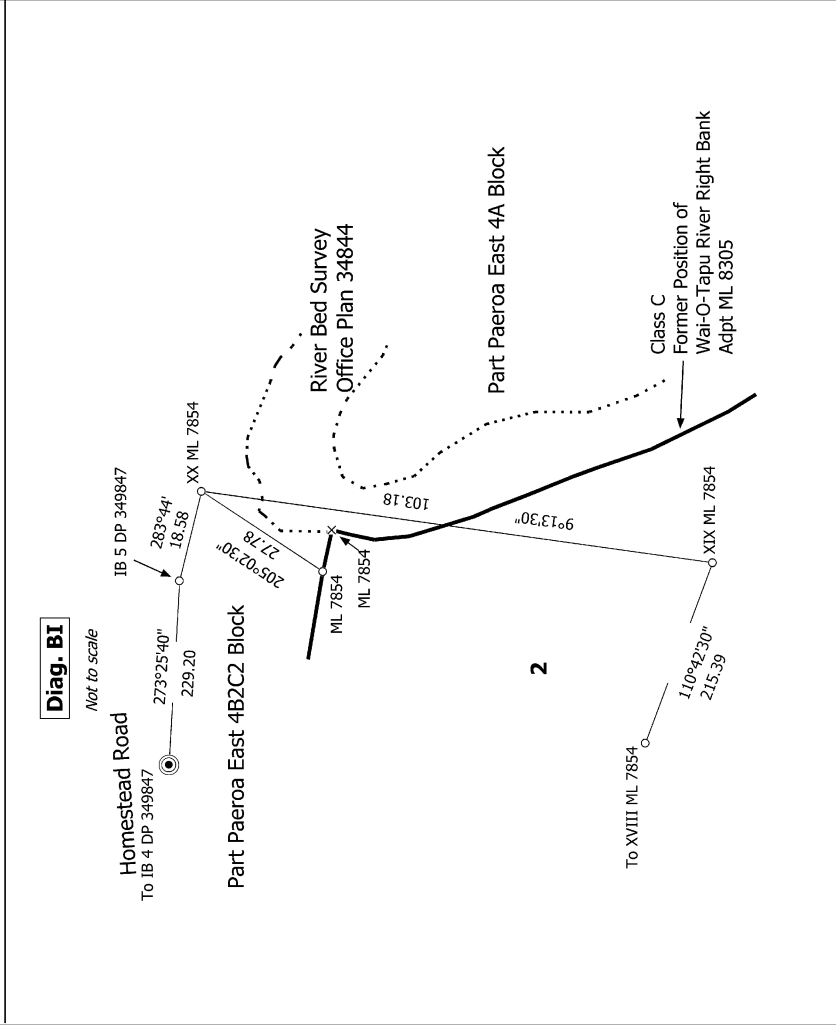
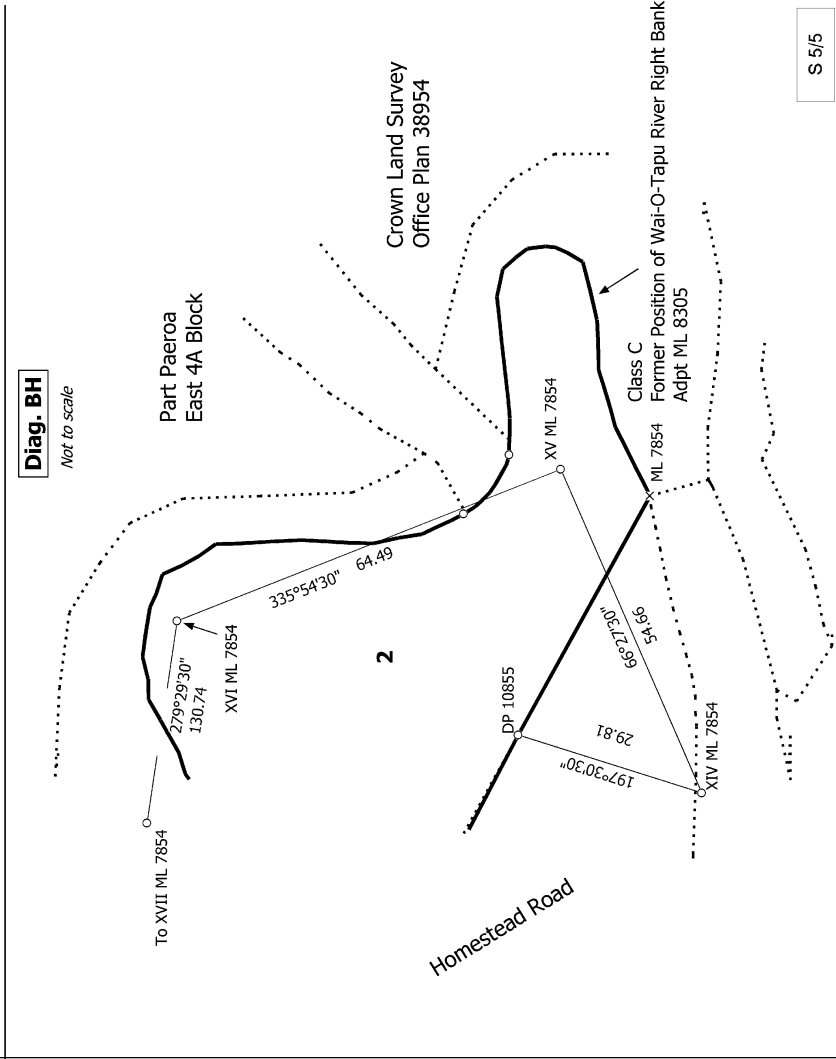
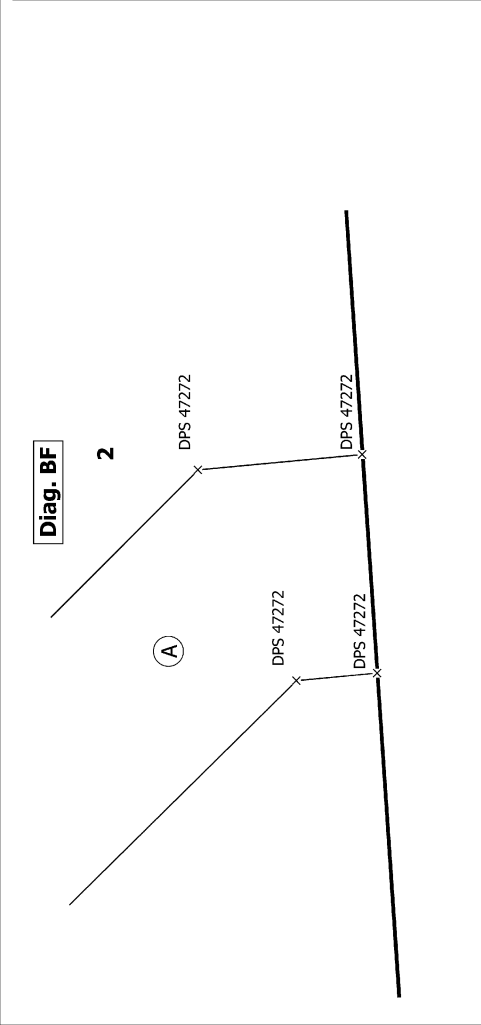
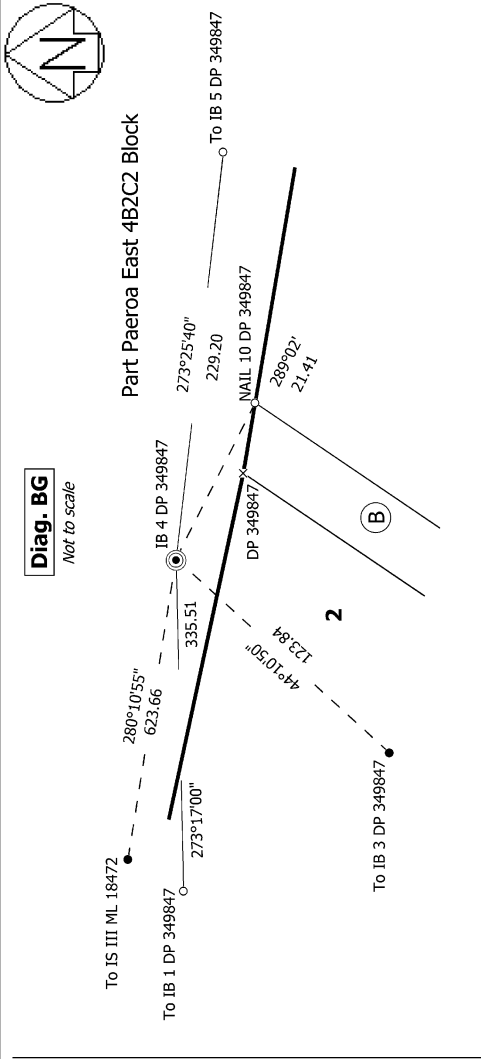


Diag. BE
Not to scale



Diag. BD
Not to scale

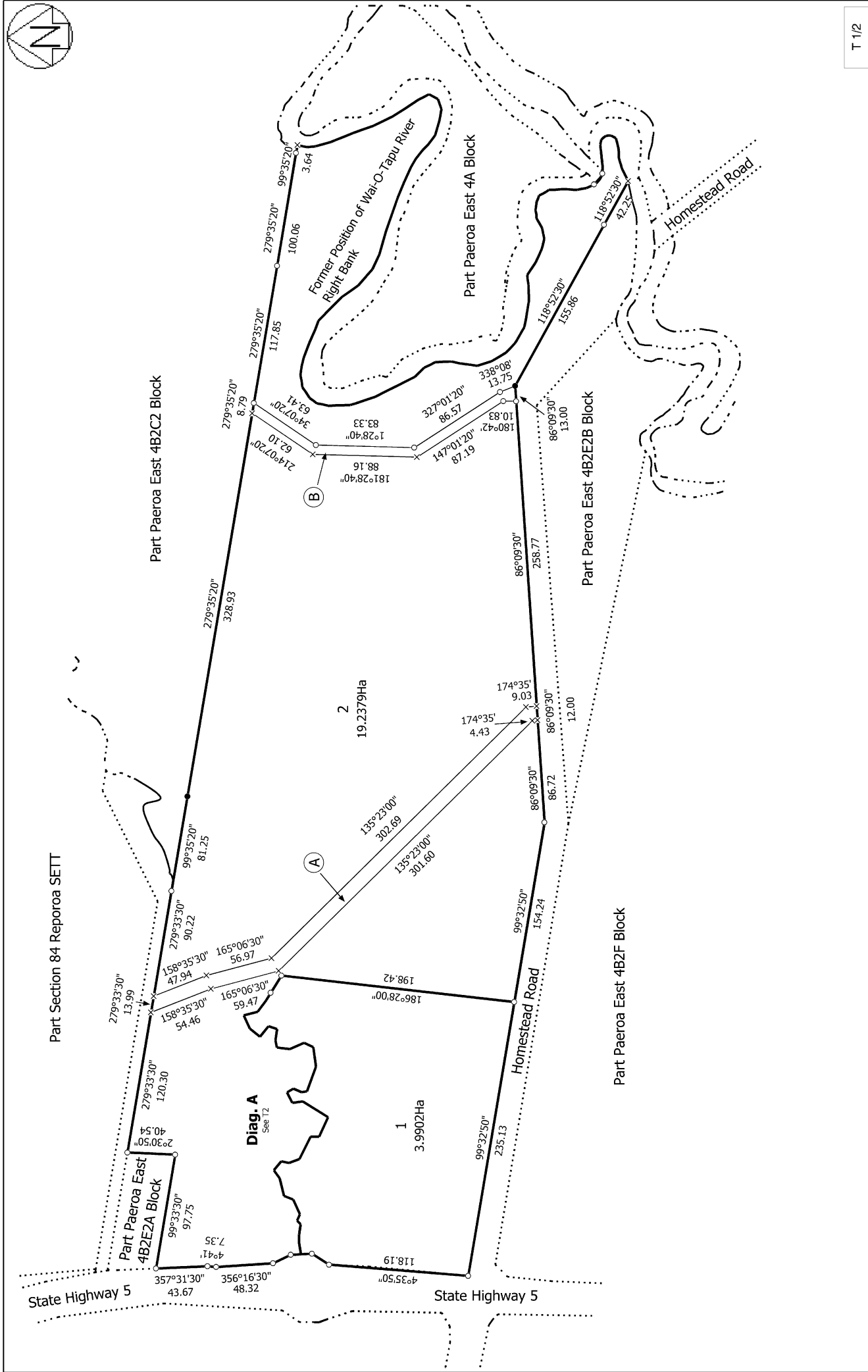
<p>Land District: South Auckland Digitally Generated Plan Generated on: 15/11/2017 4:54pm Page 13 of 16</p>	<p>Lots 1 and 2 being a subdivision of Part Paeroa East 4B2E2B</p>	<p>Surveyor: Julia Marie Glass Firm: Beyond Ltd Survey Date: 8/08/2017</p>	<p>CSD Plan DP 514921 Deposited on: 1/11/2017</p>
--	---	--	---



Land District: South Auckland	Lots 1 and 2 being a subdivision of Part Paeroa East 4B2E2B		S 5/5
Digitally Generated Plan Generated on: 15/11/2017 4:54pm Page 14 of 16	Surveyor: Julia Marie Glass Firm: Beyond Ltd Survey Date: 8/08/2017	CSD Plan DP 514921	Deposited on: 1/11/2017



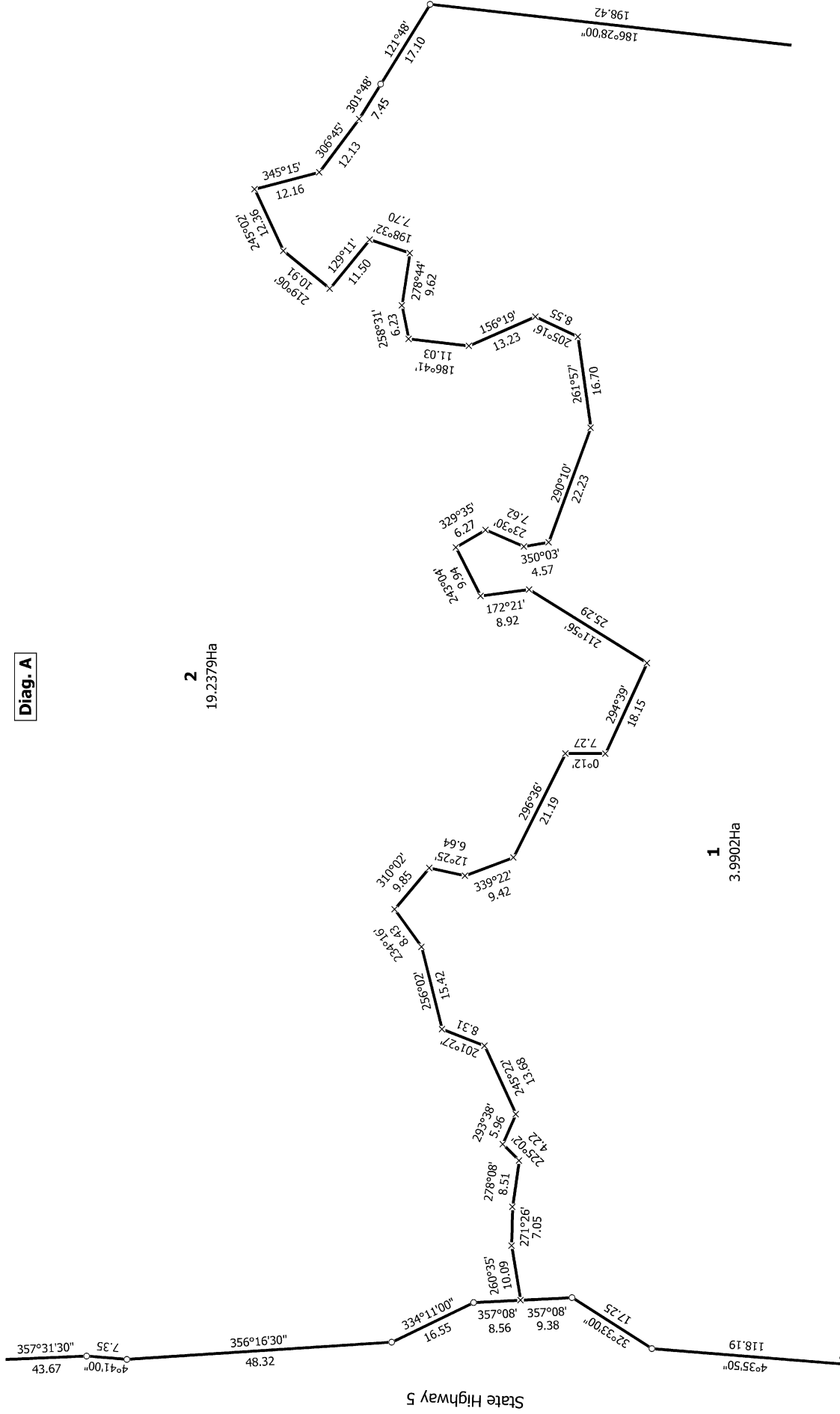
T 1/2



Land District: South Auckland	Lots 1 and 2 being a subdivision of Part Paeroa East 4B2E2B	Surveyor: Julia Marie Glass Firm: Beyond Ltd Survey Date: 8/08/2017
Digitally Generated Plan Generated on: 15/11/2017 4:54pm Page 15 of 16	CSD Plan DP 514921	Deposited on: 1/11/2017



Diag. A



T 2/2

Land District: South Auckland

Digitally Generated Plan

Generated on: 15/11/2017 4:54pm Page 16 of 16

Lots 1 and 2 being a subdivision of Part Paeroa East 4B2E2B

Surveyor: Julia Marie Glass

Firm: Beyond Ltd

Survey Date: 8/08/2017

CSD Plan DP 514921

Deposited on: 1/11/2017