



CSD Plan - DP 514130

Survey Number DP 514130
Surveyor Reference 7862 - Mike Greer Homes
Surveyor Mathew John Mortell
Survey Firm Yeomans Survey Solutions Ltd (Auckland)
Surveyor Declaration I Mathew John Mortell, being a licensed cadastral surveyor, certify that:
(a) this dataset provided by me and its related survey are accurate, correct and in accordance with the Cadastral Survey Act 2002 and the Rules for Cadastral Survey 2010, and
(b) the survey was undertaken by me or under my personal direction.
Declared on 10 Jan 2018 04:32 PM

Survey Details

Dataset Description Lots 1 to 8 being a subdivision of Lot 2 DP 60057 and Lot 3 DP 38526
Purpose LT Subdivision
Status Deposited
Land District North Auckland
Meridional Circuit Mount Eden 2000

Type	Survey
Survey Class	Class A
Vertical Datum	

Survey Dates

Surveyed Date	19/07/2017	Certified Date	10/01/2018
Submitted Date	10/01/2018 16:32:18	Survey Approval Date	11/01/2018
Deposit Date	30/07/2020		

Referenced Surveys

Survey Number	Land District	Bearing Correction
DP 171263	North Auckland	0°00'00"
DP 38526	North Auckland	0°00'00"
DP 44071	North Auckland	0°00'00"
DP 60057	North Auckland	0°00'00"
SO 54068	North Auckland	0°00'00"
DP 42257	North Auckland	0°00'00"
DP 52036	North Auckland	0°00'00"
DP 4393	North Auckland	0°00'00"
DP 205282	North Auckland	0°00'00"
DP 347086	North Auckland	0°00'00"

Territorial Authorities

Auckland Council

Comprised In

RT NA15B/1347
RT NA15B/1348

Created Parcels

Parcels	Parcel Intent	Area	RT Reference
Area Q Deposited Plan 514130	Easement		

CSD Plan - DP 514130

Created Parcels

Parcels	Parcel Intent	Area	RT Reference
Area R Deposited Plan 514130	Easement		
Area S Deposited Plan 514130	Easement		
Area T Deposited Plan 514130	Easement		
Lot 1 Deposited Plan 514130	Fee Simple Title	0.0212 Ha	797070
Lot 2 Deposited Plan 514130	Fee Simple Title	0.0126 Ha	797071
Lot 3 Deposited Plan 514130	Fee Simple Title	0.0184 Ha	797072
Lot 4 Deposited Plan 514130	Fee Simple Title	0.0127 Ha	797073
Lot 5 Deposited Plan 514130	Fee Simple Title	0.0224 Ha	797074
Lot 6 Deposited Plan 514130	Fee Simple Title	0.0136 Ha	797075
Lot 7 Deposited Plan 514130	Fee Simple Title	0.0381 Ha	797076
Lot 8 Deposited Plan 514130	Fee Simple Title	0.0131 Ha	Multiple
Area A Deposited Plan 514130	Easement		
Area B Deposited Plan 514130	Easement		
Area C Deposited Plan 514130	Easement		
Area D Deposited Plan 514130	Easement		
Area E Deposited Plan 514130	Easement		
Area F Deposited Plan 514130	Easement		
Area G Deposited Plan 514130	Easement		
Area H Deposited Plan 514130	Easement		
Area I Deposited Plan 514130	Easement		
Area J Deposited Plan 514130	Easement		
Area K Deposited Plan 514130	Easement		
Area L Deposited Plan 514130	Easement		
Area M Deposited Plan 514130	Easement		
Area N Deposited Plan 514130	Easement		
Area O Deposited Plan 514130	Easement		
Area P Deposited Plan 514130	Easement		
Area U Deposited Plan 514130	Easement		
Area V Deposited Plan 514130	Easement		
Area W Deposited Plan 514130	Easement		
Area X Deposited Plan 514130	Easement		
Area Z Deposited Plan 514130	Easement		
Area Y Deposited Plan 514130	Easement		
Total Area		<hr/> 0.1521 Ha	

Mark and Vector

Survey Number DP 514130
Meridional Circuit Mount Eden 2000

From	To	Code	Bearing	Adpt Surv	Distance	Adpt Surv
4233 SO 54068	LP VI DP 205282	ob0	32°02'55"	A SO 54068	130.66	A DP 205282
LP VI DP 205282	LP VII DP 205282	ob2	32°02'55"	A SO 54068	47.99	A DP 205282
LP VII DP 205282	MA V DP 347086	ob3	32°02'55"	A SO 54068	20.94	A DP 347086
MA V DP 347086	LP I DP 171263	ob5	32°02'55"	A SO 54068	31.41	C
LP I DP 171263	4234 SO 54068	ob8	32°02'55"	A SO 54068	91.875	A DP 171263
LP VII DP 205282	AP 1 DP 514130	ob4	122°14'20"	A DP 404969	0.17	C
AP 1 DP 514130	AP 6 DP 514130	ob19	122°14'20"	M	42.98	M
AP 2 DP 514130	IS 7 DP 514130	ob16	122°14'20"	M	10.97	M
AP 3 DP 514130	MA I DP 347086	ob6	122°14'20"	M	14.96	M
MA I DP 347086	AP 2 DP 404969	ob7	122°14'20"	M	14.07	M
AP 2 DP 404969	AP 1 DP 404969	ob9	122°14'20"	M	2.30	M
AP 1 DP 404969	RM 3862 SO 55810	ob10	121°45'20"	M	184.56	M
AP 1 DP 514130	4234 SO 54068	ob20	31°58'40"	M	144.19	M
AP 3 DP 514130	AP 4 DP 514130	ob12	28°32'20"	M	32.25	M
AP 4 DP 514130	AP 5 DP 514130	ob21	305°59'00"	M	19.43	M
AP 5 DP 514130	IS 7 DP 514130	ob30	201°27'10"	M	34.05	M
4233 SO 54068	IS I DP 42257	ob1	47°45'00"	A SO 54068	52.12	A SO 54068
IS I DP 42257	IP I DP 38526	ob34	32°00'00"	A DP 4393	146.53	A DP 42257
IP I DP 38526	IS I DP 38526	ob35	32°00'00"	A DP 4393	25.86	A DP 38526
IS I DP 38526	IS II DP 44071	ob37	32°00'00"	A DP 4393	34.58	C
IS II DP 44071	IT I DP 44071	ob38	32°00'00"	A DP 4393	55.43	A DP 44071
IT I DP 44071	IS I DP 52036	ob39	119°00'10"	A DP 52036	84.77	A DP 52036
IS I DP 52036	4234 SO 54068	ob40	305°25'50"	A SO 54068	98.72	A SO 54068
IP I DP 38526	PEG (94) DP 60057	ob36	122°01'30"	A DP 38526	5.03	A DP 38526
PEG (94) DP 60057	PEG 118 DP 514130	ob41	122°01'30"	A DP 38526	25.68	C
PEG 118 DP 514130	PEG 118 DP 514130	ob62	122°01'30"	A DP 38526	13.56	C
PEG 135 DP 514130	PEG (95) DP 38526	ob87	122°01'30"	A DP 38526	0.24	C
PEG (95) DP 38526	PEG 109 DP 514130	ob42	32°00'00"	A DP 38526	14.69	A DP 60057
PEG 109 DP 514130	PEG 142 DP 514130	ob51	32°00'00"	A DP 38526	7.39	C
PEG 142 DP 514130	UNMK (136) DP 60057	ob92	32°00'00"	A DP 38526	0.60	C
UNMK (136) DP 60057	PEG (134) DP 60057	ob80	32°00'00"	A DP 38526	1.21	A DP 60057
PEG (134) DP 60057	IS VI DP 38526	ob79	32°00'00"	A DP 38526	1.95	C
IS VI DP 38526	IS I DP 38526	ob43	302°02'00"	A DP 38526	45.01	A DP 38526
IS VI DP 38526	PEG (98) DP 60057	ob44	32°00'00"	A DP 38526	4.33	A DP 38526
PEG (98) DP 60057	PEG (100) DP 38526	ob45	122°01'20"	A DP 38526	24.39	A DP 38526
PEG (100) DP 38526	DISK 143 DP 514130	ob47	212°01'00"	A DP 38526	11.24	C
DISK 143 DP 514130	PEG (102) DP 52485	ob94	212°01'00"	A DP 38526	18.93	C
PEG (102) DP 52485	PEG 161 DP 514130	ob48	302°01'30"	A DP 38526	5.19	C
PEG 161 DP 514130	UNMK 210 DP 514130	ob114	302°01'30"	A DP 38526	0.50	C
PEG 148 DP 514130	PEG 99 DP 514130	ob99	302°01'30"	A DP 38526	12.80	C

Mark and Vector

Survey Number DP 514130
Meridional Circuit Mount Eden 2000

From	To	Code	Bearing	Adpt Surv	Distance	Adpt Surv
PEG 99 DP 514130	PEG (95) DP 38526	ob84	302°01'30"	A DP 38526	3.60	C
PEG (98) DP 60057	IT III DP 60057	ob46	240°27'00"	A DP 60057	2.42	A DP 60057
IT III DP 60057	IS IV DP 171263	ob49	76°55'00"	A DP 171263	7.83	A DP 171263
IS IV DP 171263	LP I DP 171263	ob50	302°41'00"	A DP 171263	63.35	A DP 171263
PEG 109 DP 514130	PEG 110 DP 514130	ob52	301°57'00"	A DP 60057	14.30	C
PEG 110 DP 514130	PEG (111) DP 60057	ob54	301°57'00"	A DP 60057	2.92	C
PEG (111) DP 60057	CP (112) DP 60057	ob55	302°33'00"	A DP 60057	2.40	A DP 60057
CP (112) DP 60057	UNMK (113) DP 60057	ob56	32°42'00"	A DP 60057	0.11	A DP 60057
UNMK (113) DP 60057	PEG (114) DP 60057	ob58	302°42'00"	A DP 60057	7.01	A DP 60057
PEG (114) DP 60057	CP (115) DP 60057	ob59	302°03'00"	A DP 60057	13.36	A DP 60057
CP (115) DP 60057	PEG (94) DP 60057	ob60	212°00'00"	A DP 38526	14.89	A DP 60057
PEG 118 DP 514130	PEG 110 DP 514130	ob63	32°00'00"	C	14.67	C
CP (112) DP 60057	UNMK (116) DP 60057	ob57	212°42'00"	A DP 60057	0.07	A DP 60057
UNMK (116) DP 60057	UNMK (119) DP 60057	ob61	302°42'00"	A DP 60057	3.15	A DP 60057
UNMK (119) DP 60057	UNMK (120) DP 60057	ob64	212°42'00"	A DP 60057	0.08	A DP 60057
UNMK (120) DP 60057	UNMK (121) DP 60057	ob65	302°42'00"	A DP 60057	0.83	A DP 60057
UNMK (121) DP 60057	UNMK (122) DP 60057	ob66	212°42'00"	A DP 60057	0.20	A DP 60057
UNMK (122) DP 60057	UNMK (123) DP 60057	ob67	302°42'00"	A DP 60057	1.68	A DP 60057
UNMK (123) DP 60057	UNMK (124) DP 60057	ob68	32°42'00"	A DP 60057	0.20	A DP 60057
UNMK (124) DP 60057	UNMK (125) DP 60057	ob69	302°42'00"	A DP 60057	1.35	A DP 60057
UNMK (125) DP 60057	PEG (114) DP 60057	ob70	32°42'00"	A DP 60057	0.26	A DP 60057
UNMK (136) DP 60057	UNMK (137) DP 60057	ob81	122°00'00"	A DP 60057	3.42	A DP 60057
UNMK (137) DP 60057	PEG (138) DP 60057	ob82	32°00'00"	A DP 60057	1.21	A DP 60057
PEG (138) DP 60057	PEG (134) DP 60057	ob83	302°00'00"	A DP 60057	3.42	A DP 60057
PEG 109 DP 514130	PEG 117 DP 514130	ob53	121°57'00"	C	3.61	C
PEG 117 DP 514130	UNMK 140 DP 514130	ob85	212°01'00"	C	3.97	C
UNMK 140 DP 514130	UNMK 139 DP 514130	ob167	212°01'00"	C	0.45	C
UNMK 139 DP 514130	PEG 99 DP 514130	ob89	212°01'00"	C	10.28	C
PEG 135 DP 514130	UNMK 204 DP 514130	ob88	32°34'00"	C	1.19	C

Mark and Vector

Survey Number DP 514130
Meridional Circuit Mount Eden 2000

From	To	Code	Bearing	Adpt Surv	Distance	Adpt Surv
UNMK 204 DP 514130	UNMK 164 DP 514130	ob172	32°34'00"	C	1.20	C
UNMK 164 DP 514130	UNMK 170 DP 514130	ob121	32°34'00"	C	2.15	C
UNMK 170 DP 514130	UNMK 141 DP 514130	ob129	32°34'00"	C	5.74	C
UNMK 141 DP 514130	UNMK 174 DP 514130	ob90	122°01'00"	C	0.30	C
UNMK 174 DP 514130	UNMK 139 DP 514130	ob134	122°01'00"	C	3.45	C
PEG 142 DP 514130	UNMK 162 DP 514130	ob93	121°55'00"	C	6.04	C
UNMK 162 DP 514130	UNMK 147 DP 514130	ob115	121°55'00"	C	10.81	C
UNMK 147 DP 514130	UNMK 213 DP 514130	ob98	121°55'00"	C	1.63	C
PEG 145 DP 514130	PEG 146 DP 514130	ob96	211°55'00"	C	3.20	C
PEG 146 DP 514130	UNMK 212 DP 514130	ob97	121°55'00"	C	0.95	C
PEG 148 DP 514130	UNMK 163 DP 514130	ob100	31°44'00"	C	2.40	C
UNMK 163 DP 514130	UNMK 168 DP 514130	ob118	31°44'00"	C	2.27	C
UNMK 168 DP 514130	UNMK 159 DP 514130	ob126	31°44'00"	C	5.62	C
UNMK 159 DP 514130	UNMK 179 DP 514130	ob110	31°44'00"	C	0.45	C
UNMK 179 DP 514130	DISK 152 DP 514130	ob139	31°44'00"	C	3.40	C
DISK 152 DP 514130	DISK 153 DP 514130	ob103	31°44'00"	C	2.98	C
DISK 153 DP 514130	DISK 155 DP 514130	ob104	122°10'00"	C	0.54	C
DISK 155 DP 514130	UNMK 175 DP 514130	ob106	31°55'00"	C	4.69	C
UNMK 175 DP 514130	UNMK 147 DP 514130	ob135	31°55'00"	C	0.30	C
UNMK 159 DP 514130	UNMK 167 DP 514130	ob111	122°01'00"	C	0.30	C
UNMK 167 DP 514130	PEG 158 DP 514130	ob125	122°01'00"	C	2.54	C
PEG 158 DP 514130	UNMK 177 DP 514130	ob109	212°01'00"	C	5.61	C
UNMK 177 DP 514130	UNMK 180 DP 514130	ob137	212°01'00"	C	0.58	C
UNMK 180 DP 514130	UNMK 178 DP 514130	ob141	212°01'00"	C	1.68	C
UNMK 178 DP 514130	PEG 161 DP 514130	ob138	212°01'00"	C	2.42	C

Mark and Vector

Survey Number DP 514130
Meridional Circuit Mount Eden 2000

From	To	Code	Bearing	Adpt Surv	Distance	Adpt Surv
PEG 117 DP 514130	DISK 126 DP 514130	ob86	121°57'00"	C	7.22	C
DISK 126 DP 514130	DISK 127 DP 514130	ob71	211°57'00"	C	0.59	C
DISK 127 DP 514130	DISK 152 DP 514130	ob72	121°44'00"	C	5.50	C
UNMK 163 DP 514130	UNMK 165 DP 514130	ob119	301°44'00"	C	0.30	C
UNMK 165 DP 514130	UNMK 184 DP 514130	ob123	31°44'00"	C	0.60	C
UNMK 184 DP 514130	UNMK 183 DP 514130	ob147	31°44'00"	C	7.14	C
UNMK 183 DP 514130	UNMK 166 DP 514130	ob145	31°44'00"	C	0.15	C
UNMK 166 DP 514130	UNMK 159 DP 514130	ob124	121°44'00"	C	0.30	C
UNMK 163 DP 514130	UNMK 128 DP 514130	ob120	121°44'00"	C	1.00	C
UNMK 128 DP 514130	UNMK 129 DP 514130	ob73	31°44'00"	C	2.26	C
UNMK 129 DP 514130	UNMK 169 DP 514130	ob75	301°44'00"	C	0.70	C
UNMK 169 DP 514130	UNMK 168 DP 514130	ob127	301°44'00"	C	0.30	C
UNMK 169 DP 514130	UNMK 167 DP 514130	ob128	31°44'00"	C	5.62	C
UNMK 141 DP 514130	UNMK 144 DP 514130	ob91	302°01'00"	C	0.30	C
UNMK 144 DP 514130	UNMK 191 DP 514130	ob95	212°34'00"	C	0.15	C
UNMK 191 DP 514130	UNMK 190 DP 514130	ob156	212°34'00"	C	7.14	C
UNMK 190 DP 514130	UNMK 149 DP 514130	ob154	212°34'00"	C	0.60	C
UNMK 149 DP 514130	UNMK 164 DP 514130	ob101	122°34'00"	C	0.30	C
UNMK 164 DP 514130	UNMK 171 DP 514130	ob122	122°34'00"	C	1.00	C
UNMK 171 DP 514130	UNMK 200 DP 514130	ob130	32°34'00"	C	0.50	C
UNMK 172 DP 514130	UNMK 173 DP 514130	ob131	302°34'00"	C	0.70	C
UNMK 173 DP 514130	UNMK 170 DP 514130	ob132	302°34'00"	C	0.30	C
UNMK 173 DP 514130	UNMK 174 DP 514130	ob133	32°34'00"	C	5.74	C
UNMK 162 DP 514130	UNMK 130 DP 514130	ob116	31°55'00"	C	0.30	C
UNMK 130 DP 514130	UNMK 131 DP 514130	ob77	121°55'00"	C	10.81	C

Mark and Vector

Survey Number DP 514130
Meridional Circuit Mount Eden 2000

From	To	Code	Bearing	Adpt Surv	Distance	Adpt Surv
UNMK 131 DP 514130	UNMK 147 DP 514130	ob78	211°55'00"	C	0.30	C
UNMK 162 DP 514130	UNMK 176 DP 514130	ob117	211°55'00"	C	0.30	C
UNMK 176 DP 514130	UNMK 175 DP 514130	ob136	121°55'00"	C	10.81	C
UNMK 129 DP 514130	UNMK 177 DP 514130	ob76	121°44'00"	C	1.81	C
UNMK 128 DP 514130	UNMK 178 DP 514130	ob74	121°44'00"	C	1.80	C
UNMK 180 DP 514130	UNMK 181 DP 514130	ob142	122°01'00"	C	0.94	C
UNMK 181 DP 514130	UNMK 182 DP 514130	ob143	32°01'00"	C	6.64	C
UNMK 182 DP 514130	UNMK 179 DP 514130	ob144	302°01'00"	C	3.78	C
UNMK 183 DP 514130	UNMK 203 DP 514130	ob146	302°02'00"	C	4.52	C
UNMK 203 DP 514130	UNMK 185 DP 514130	ob165	302°01'00"	C	4.00	C
UNMK 185 DP 514130	UNMK 186 DP 514130	ob148	211°54'00"	C	7.18	C
UNMK 186 DP 514130	UNMK 184 DP 514130	ob150	121°47'00"	C	8.54	C
UNMK 179 DP 514130	UNMK 201 DP 514130	ob140	302°01'00"	C	4.82	C
UNMK 201 DP 514130	UNMK 189 DP 514130	ob163	32°01'00"	C	2.10	C
UNMK 189 DP 514130	UNMK 194 DP 514130	ob153	302°01'00"	C	4.00	C
UNMK 194 DP 514130	UNMK 199 DP 514130	ob159	211°54'00"	C	2.10	C
UNMK 199 DP 514130	UNMK 187 DP 514130	ob162	302°01'00"	C	1.05	C
UNMK 187 DP 514130	UNMK 188 DP 514130	ob151	211°54'00"	C	8.39	C
UNMK 188 DP 514130	UNMK 165 DP 514130	ob152	121°47'00"	C	9.59	C
UNMK 140 DP 514130	UNMK 151 DP 514130	ob168	302°01'00"	C	13.74	C
UNMK 151 DP 514130	UNMK 198 DP 514130	ob102	212°34'00"	C	0.60	C
UNMK 198 DP 514130	UNMK 156 DP 514130	ob160	302°01'00"	C	3.31	C
UNMK 156 DP 514130	UNMK 157 DP 514130	ob107	212°01'00"	C	3.70	C

Mark and Vector

Survey Number DP 514130
Meridional Circuit Mount Eden 2000

From	To	Code	Bearing	Adpt Surv	Distance	Adpt Surv
UNMK 157 DP 514130	UNMK 160 DP 514130	ob108	122°34'00"	C	3.27	C
UNMK 160 DP 514130	UNMK 154 DP 514130	ob112	212°34'00"	C	4.01	C
UNMK 154 DP 514130	UNMK 149 DP 514130	ob105	122°01'00"	C	9.70	C
UNMK 190 DP 514130	UNMK 192 DP 514130	ob155	302°01'00"	C	8.50	C
UNMK 192 DP 514130	UNMK 202 DP 514130	ob157	32°34'00"	C	3.40	C
UNMK 202 DP 514130	UNMK 193 DP 514130	ob164	32°34'00"	C	3.74	C
UNMK 193 DP 514130	UNMK 191 DP 514130	ob158	122°01'00"	C	8.50	C
UNMK 160 DP 514130	UNMK 202 DP 514130	ob113	122°34'00"	C	1.20	C
UNMK 198 DP 514130	UNMK 193 DP 514130	ob161	122°34'00"	C	1.19	C
UNMK 185 DP 514130	UNMK 199 DP 514130	ob149	31°54'00"	C	0.60	C
UNMK 203 DP 514130	UNMK 201 DP 514130	ob166	31°54'00"	C	0.60	C
AP 3 DP 514130	PEG 161 DP 514130	ob13	15°21'00"	M	19.16	M
AP 3 DP 514130	PEG 148 DP 514130	ob14	7°43'00"	M	20.14	M
AP 3 DP 514130	PEG 99 DP 514130	ob15	343°03'00"	M	27.95	M
AP 2 DP 514130	PEG 118 DP 514130	ob17	356°44'00"	M	22.36	M
AP 2 DP 514130	PEG 135 DP 514130	ob18	35°36'00"	M	18.29	M
AP 6 DP 514130	AP 2 DP 514130	ob169	122°14'20"	M	14.48	M
AP 6 DP 514130	PEG 110 DP 514130	ob170	34°44'00"	M	32.91	M
UNMK 200 DP 514130	UNMK 172 DP 514130	ob173	32°34'00"	C	1.65	C
PEG 118 DP 514130	PEG 135 DP 514130	ob174	122°01'30"	A DP 38526	0.50	C
PEG 118 DP 514130	UNMK 204 DP 514130	ob175	55°16'00"	C	1.29	C
UNMK 204 DP 514130	UNMK 205 DP 514130	ob171	122°01'00"	C	2.25	C
UNMK 205 DP 514130	UNMK 205 DP 514130	ob176	32°01'00"	C	1.69	C
UNMK 205 DP 514130	UNMK 200 DP 514130	ob177	302°01'00"	C	1.23	C
UNMK 209 DP 514130	PEG 148 DP 514130	ob180	302°01'30"	A DP 38526	0.50	C
UNMK 210 DP 514130	UNMK 209 DP 514130	ob178	302°01'30"	A DP 38526	1.79	C
UNMK 209 DP 514130	UNMK 163 DP 514130	ob181	19°58'00"	C	2.45	C

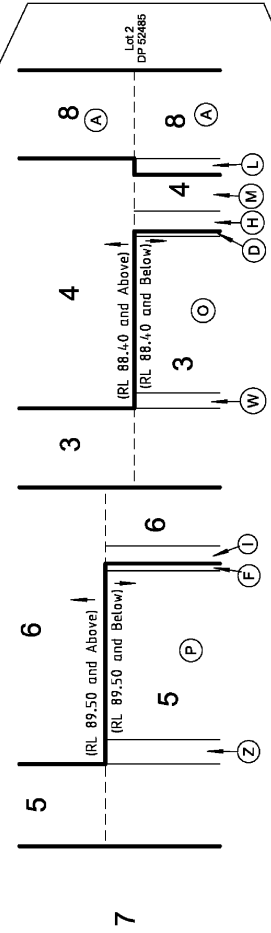
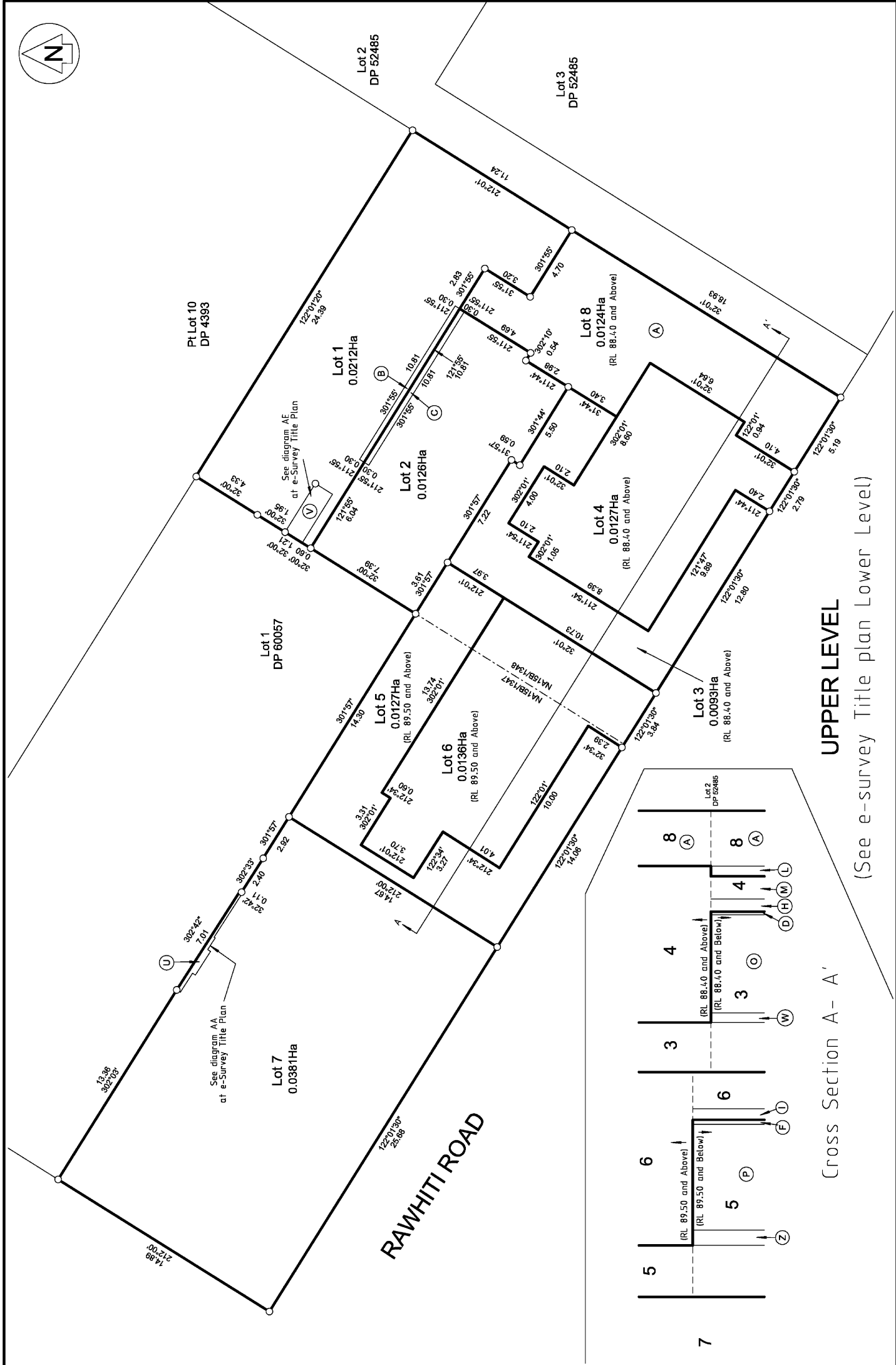
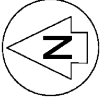
Mark and Vector

Survey Number DP 514130
Meridional Circuit Mount Eden 2000

From	To	Code	Bearing	Adpt Surv	Distance	Adpt Surv
UNMK 210 DP 514130	UNMK 178 DP 514130	ob179	43°41'00"	C	2.47	C
UNMK 213 DP 514130	PEG 145 DP 514130	ob182	121°55'00"	C	1.20	C
UNMK 212 DP 514130	DISK 143 DP 514130	ob184	121°55'00"	C	3.75	C
UNMK 213 DP 514130	UNMK 214 DP 514130	ob183	31°55'00"	C	1.70	C
UNMK 214 DP 514130	UNMK 215 DP 514130	ob185	121°55'00"	C	2.15	C
UNMK 215 DP 514130	UNMK 212 DP 514130	ob186	211°55'00"	C	4.90	C
IS 7 DP 514130	AP 3 DP 514130	ob187	122°14'20"	M	15.10	M
AP 4 DP 514130	DISK 143 DP 514130	ob22	49°59'00"	M	5.36	M
AP 4 DP 514130	PEG 145 DP 514130	ob23	11°47'00"	M	8.83	M
AP 4 DP 514130	PEG 146 DP 514130	ob24	1°05'00"	M	5.93	M
AP 4 DP 514130	DISK 155 DP 514130	ob25	331°15'00"	M	6.73	M
AP 4 DP 514130	DISK 153 DP 514130	ob26	329°10'00"	M	7.21	M
AP 4 DP 514130	DISK 152 DP 514130	ob27	304°46'00"	M	6.41	M
AP 4 DP 514130	DISK 126 DP 514130	ob28	306°12'00"	M	11.93	M
AP 4 DP 514130	DISK 127 DP 514130	ob29	303°22'00"	M	11.90	M
AP 5 DP 514130	PEG 117 DP 514130	ob31	183°37'00"	M	0.55	M
AP 5 DP 514130	PEG 142 DP 514130	ob32	6°08'00"	M	7.67	M
AP 5 DP 514130	PEG 109 DP 514130	ob33	293°46'00"	M	3.38	M

Mark Name	Description
4234 SO 54068	Under the lid
AP 3 DP 514130	In vehicle crossing
AP 4 DP 514130	In Conc Drive
IS 7 DP 514130	In berm
RM 3862 SO 55810	In footpath

*** End of Report ***



UPPER LEVEL

(See e-survey Title plan Lower Level)

Cross Section A - A'

Supporting Document Title
Plan Graphic Sheet 1 of 1
DP 514130

Territorial Authority : Auckland Council
Date : July 2017
File : 7862

**Lots 1 to 8 being a subdivision of
Lot 2 DP 60057 and Lot 3 DP 38526**



Land District: North Auckland
Firm: Yeomans Survey Solutions Limited
Surveyor: Matthew Morrell



Our Ref: 7862- Mike Greer Homes
 Easement Schedule for DP 514130

Note:

Easements L, D, O, W, X and K are from RL 88.40 and below

Easements F, Z, P, Y and J are from RL 89.50 and below

Memorandum of Easements			
Purpose	Shown	Servient Tenement	Dominant Tenement
Right to Structural Support and Party Wall	B	Lot 1	Lot 2
	C	Lot 2	Lot 1
	D	Lot 3	Lot 4
	E	Lot 4	Lot 3
	F	Lot 5	Lot 6
	G	Lot 6	Lot 5
Right to Structural Support and Maintenance	H	Lot 4	Lot 3
	I	Lot 6	Lot 5
	J	Lot 5	Lot 6
	K	Lot 3	Lot 4
Right to Structural Support	O	Lot 3	Lot 4
	P	Lot 5	Lot 6
Right to Drain Water	H & M	Lot 4	Lot 3
Right to Eave Protection & Maintenance	K, W & X	Lot 3	Lot 4
	J, Z & Y	Lot 5	Lot 6
	L	Lot 8	Lot 4

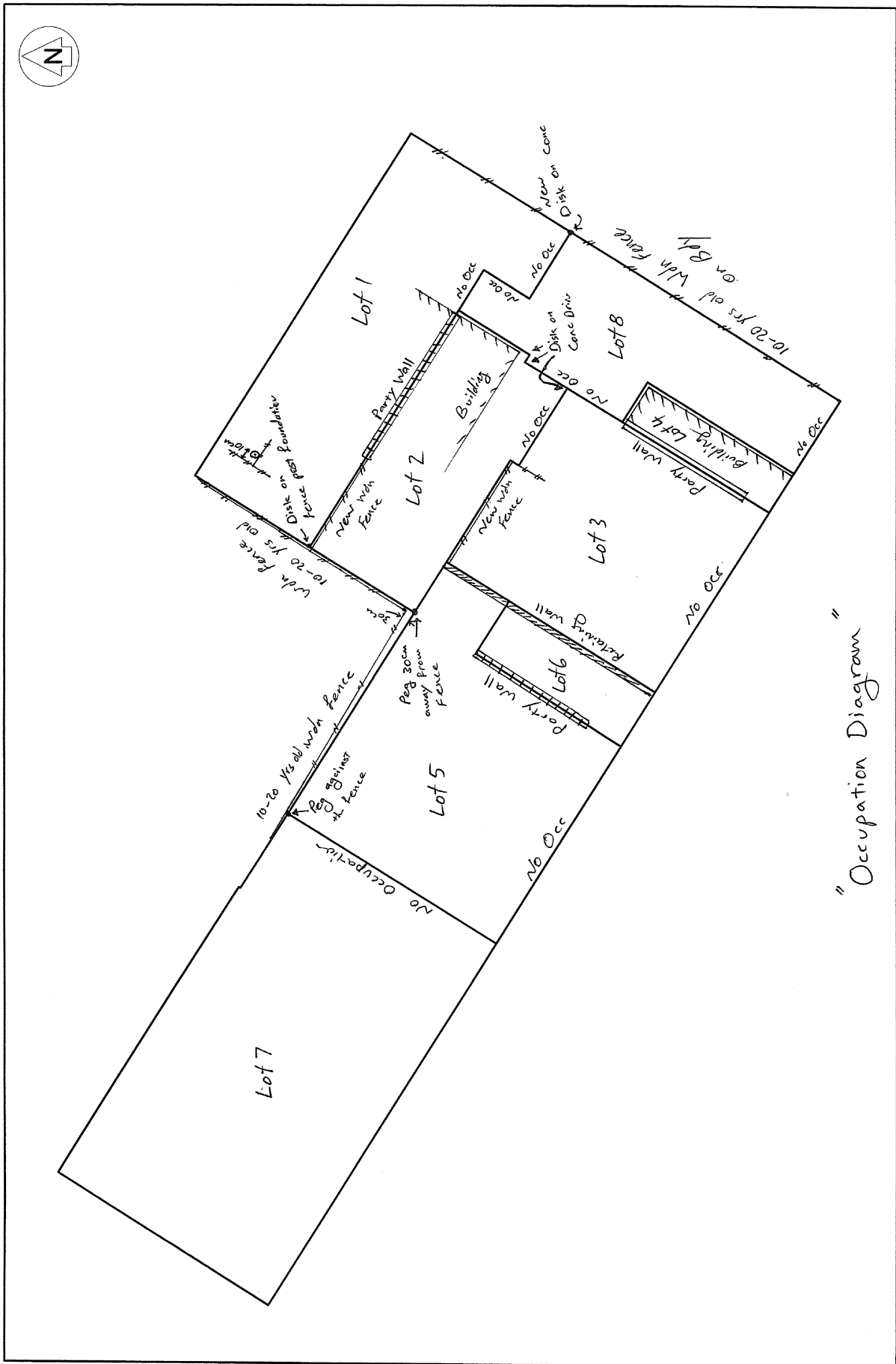
Continue next page

Schedule of Easements in Gross			
Purpose	Shown	Servient Tenement	Grantee
Right to Convey Water and Drain Sewage	A & L	Lot 8	Watercare Services Ltd
Right to Convey Water	S	Lot 4	
Right to Convey Telecommunications and Computer Media	A & L	Lot 8	Chorus New Zealand Ltd

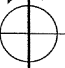
Schedule of Existing Easements			
Purpose	Shown	Servient Tenement	Created By
Drainage Easement	V	Lot 1	A307740
Party Wall Easement	U	Lot 7	A307741

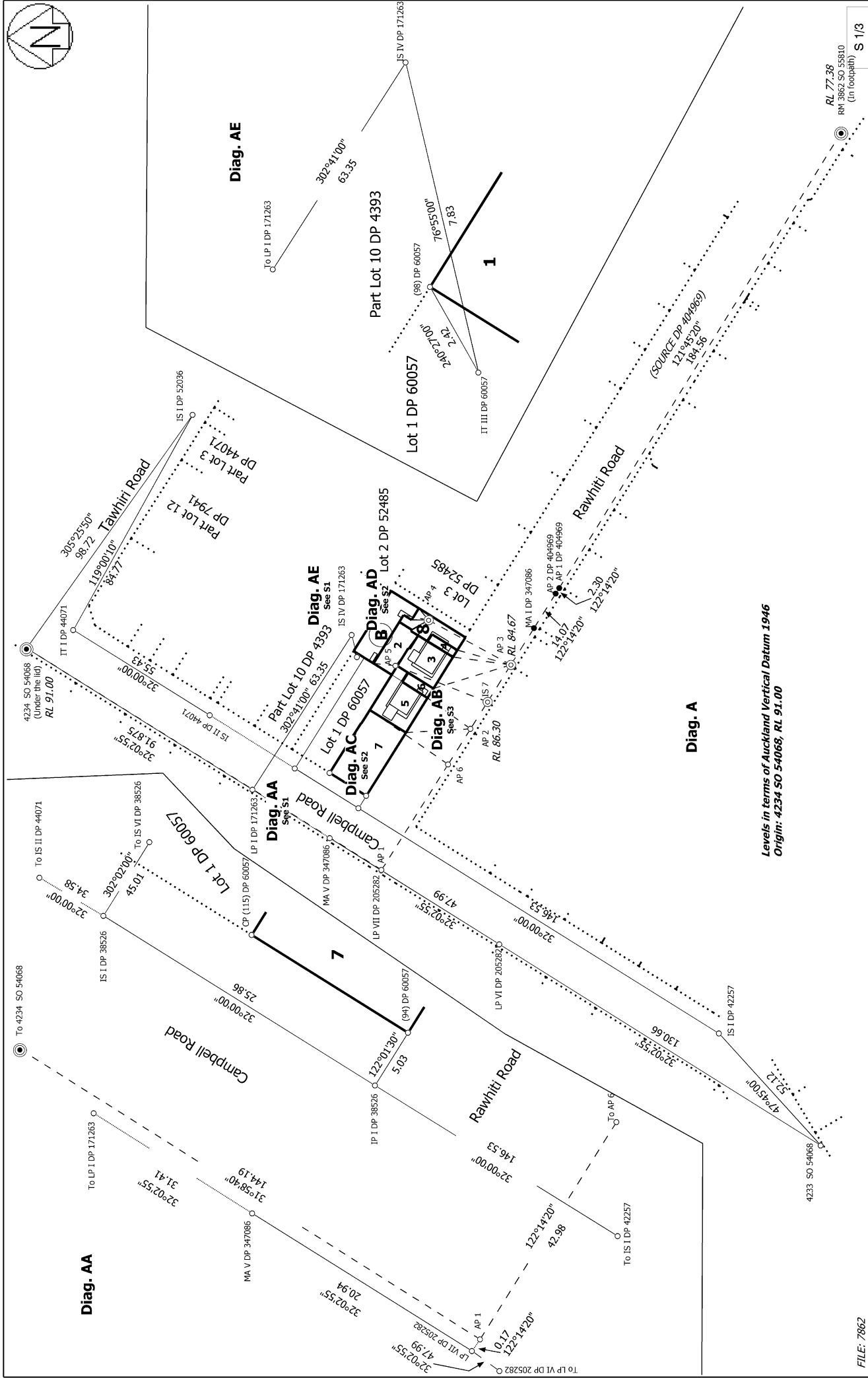
Schedule of Easements			
Purpose	Shown	Servient Tenement	Dominant Tenement
Right to Drain Water	N, I	Lot 6	Lot 5
	A, L	Lot 8	Lots 2 - 4
	T	Lot 1	Lots 2 - 4 & 8
Right to Convey Water	S	Lot 4	Lots 1 and 2
Right to Convey Electricity, Telecommunications and Computer Media	Q	Lot 5	Lot 6
	R	Lot 4	Lot 3

Occupation Diagram



"Occupation Diagram"

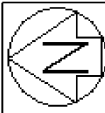
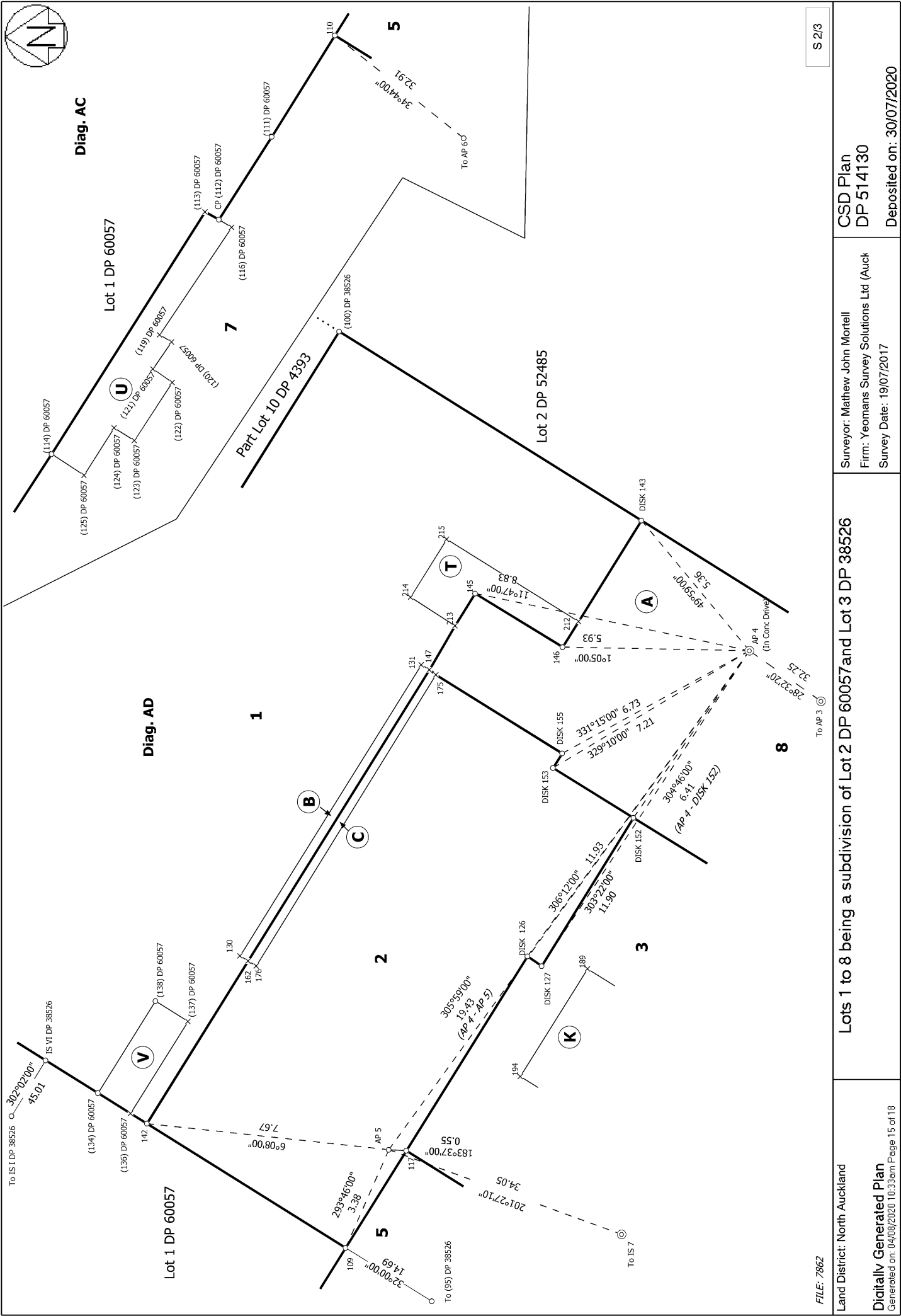
Land District: North Auckland Firm: Yeomans Survey Solutions Limited Surveyor: Matthew Mortell	 YEOMANS survey solutions	Territorial Authority: Auckland Council Date: July 2017 File: 7862	Supporting Document Title Plan Graphic Sheet 1 of 1 DP514130
Lots 1 to 8 being a subdivision of Lot 2 DP 60057 and Lot 3 DP 38526			



FILE: 7862

<p>Land District: North Auckland</p> <p>Digitally Generated Plan</p> <p>Generated on: 04/08/2020 10:33:36am Page 14 of 18</p>	<p>Lots 1 to 8 being a subdivision of Lot 2 DP 60057 and Lot 3 DP 38526</p>	<p>Surveyor: Mathew John Mortell</p> <p>Firm: Yeomans Survey Solutions Ltd (Auct</p> <p>Survey Date: 19/07/2017</p>	<p>CSD Plan</p> <p>DP 514130</p> <p>Deposited on: 30/07/2020</p>
--	--	---	--

RL 77.39
RM 3862 SO 55810
(in footprint) S 1/3



Diag. AC

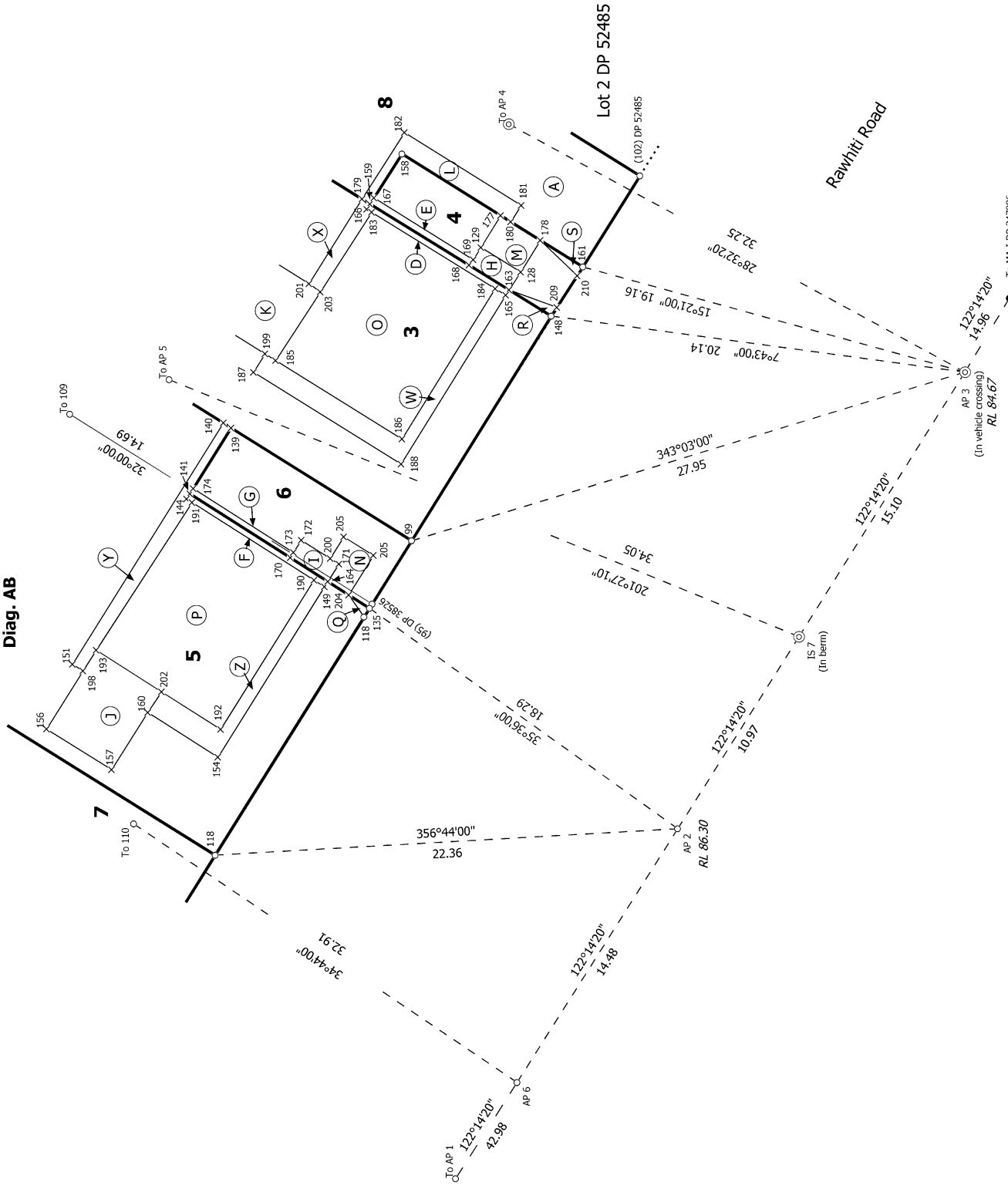
Diag. AD

S 2/3

<p>Land District: North Auckland</p> <p>Digitally Generated Plan</p> <p>Generated on: 04/08/2020 10:33:36am Page 15 of 18</p>	<p>Lots 1 to 8 being a subdivision of Lot 2 DP 60057 and Lot 3 DP 38526</p>	<p>Surveyor: Mathew John Mortell</p> <p>Firm: Yeomans Survey Solutions Ltd (Auct)</p> <p>Survey Date: 19/07/2017</p>	<p>CSD Plan</p> <p>DP 514130</p> <p>Deposited on: 30/07/2020</p>
--	--	--	--



Diag. AB



Lot 2 DP 52485

Rawhiti Road

S 3/3

FILE: 7862

Land District: North Auckland

Lots 1 to 8 being a subdivision of Lot 2 DP 60057 and Lot 3 DP 38526

Surveyor: Matthew John Mortell

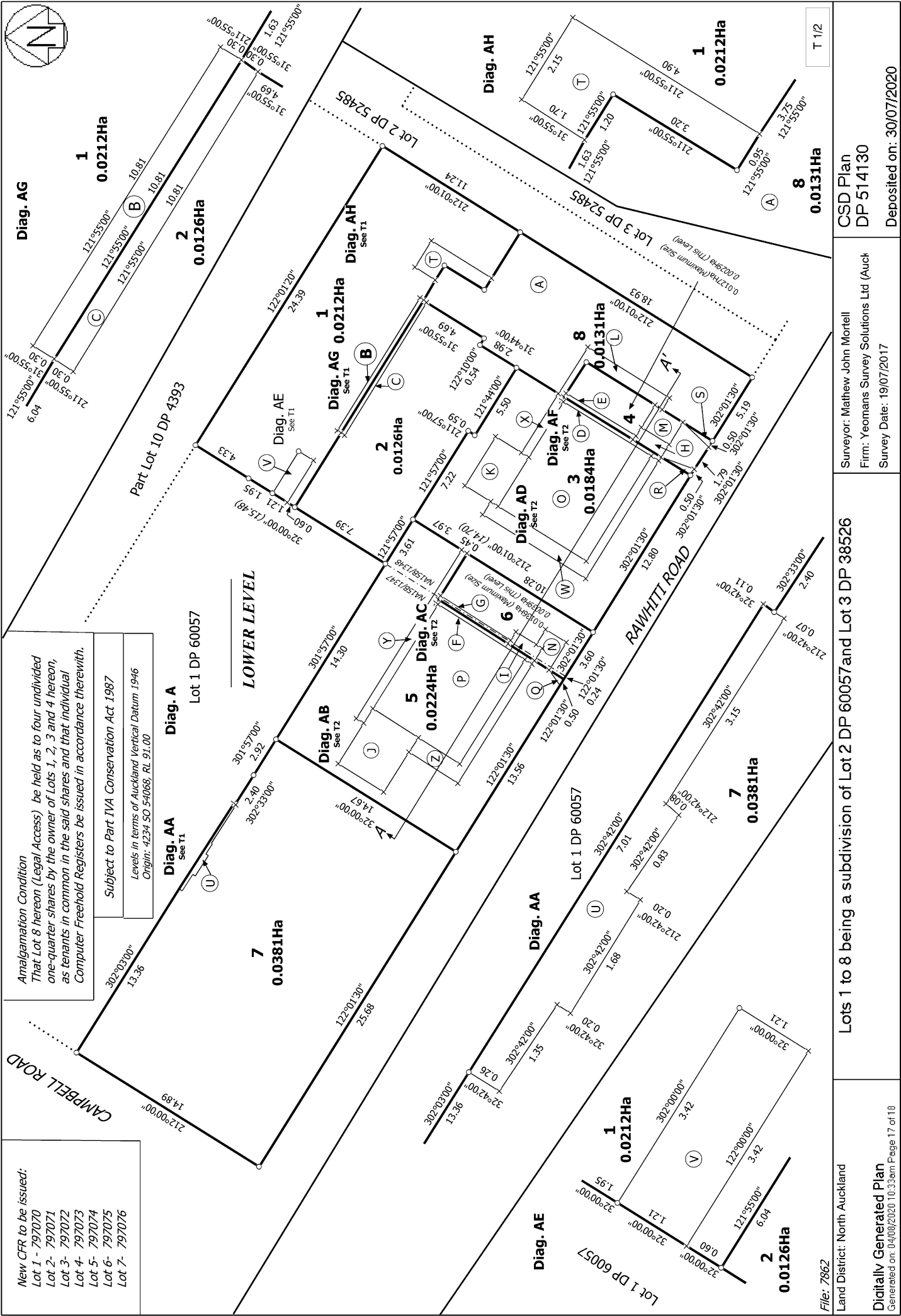
CSD Plan DP 514130

Digitally Generated Plan

Generated on: 04/08/2020 10:33:30am Page 16 of 18

Survey Date: 19/07/2017

Deposited on: 30/07/2020



New CFR to be issued:
 Lot 1 - 797070
 Lot 2 - 797071
 Lot 3 - 797072
 Lot 4 - 797073
 Lot 5 - 797074
 Lot 6 - 797075
 Lot 7 - 797076

Anaigamation Condition
 That Lot 8 hereon (Legal Access) be held as to four undivided one-quarter shares by the owner of Lots 1, 2, 3 and 4 hereon, as tenants in common in the said shares and that individual Computer Freehold Registers be issued in accordance therewith.

Subject to Part IVA Conservation Act 1987
 Levels in terms of Auckland Vertical Datum 1946
 Origin: 4234 SO 54068, RL 91.00

File: 7862

Land District: North Auckland

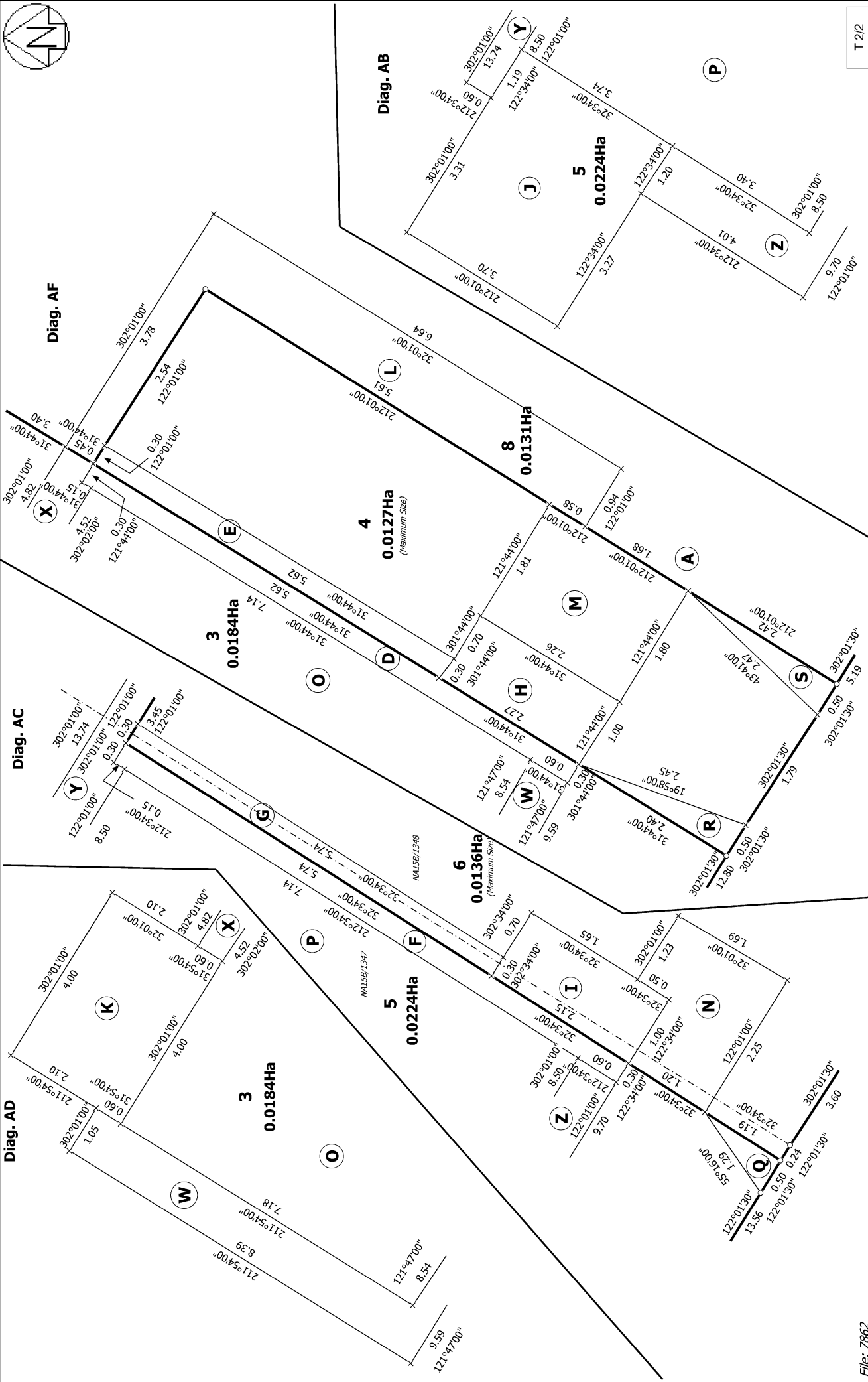
Digitally Generated Plan
 Generated on: 04/08/2020 10:33am | Page 17 of 18

Lots 1 to 8 being a subdivision of Lot 2 DP 60057 and Lot 3 DP 38526

Surveyor: Mathew John Mortell
 Firm: Yeomans Survey Solutions Ltd (Auch)
 Survey Date: 19/07/2017

CSD Plan
 DP 514130

Deposited on: 30/07/2020



T 2/2

File: 7862

Land District: North Auckland

Lots 1 to 8 being a subdivision of Lot 2 DP 60057 and Lot 3 DP 38526

Surveyor: Mathew John Mortell
 Firm: Yeomans Survey Solutions Ltd (Auch
 Survey Date: 19/07/2017

CSD Plan
 DP 514130

Digitally Generated Plan
 Generated on: 04/08/2020 10:33:36am Page 18 of 18

Deposited on: 30/07/2020