



CSD Plan - DP 485885

Survey Number DP 485885
Surveyor Reference 10221 Shanley
Surveyor David Vernon McCracken
Survey Firm McCracken Surveys Ltd
Surveyor Declaration I David Vernon McCracken, being a licensed cadastral surveyor, certify that:
(a) this dataset provided by me and its related survey are accurate, correct and in accordance with the Cadastral Survey Act 2002 and the Rules for Cadastral Survey 2010, and
(b) the survey was undertaken by me or under my personal direction.
Declared on 03 Jun 2017 11:33 AM

Survey Details

Dataset Description Lots 1, 2, 3 and 5 being a Subdivision of Pt. Lots 1 and 2 DPS 19579 and Easements over Lot 1 DPS 52992

Purpose LT Subdivision

Status Deposited **Type** Survey

Land District South Auckland **Survey Class** Class B

Meridional Circuit Mount Eden 2000

Survey Dates

Surveyed Date 15/06/2015 **Certified Date** 03/06/2017
Submitted Date 03/06/2017 11:33:55 **Survey Approval Date** 06/06/2017
Deposit Date 14/06/2017

Referenced Surveys

Survey Number	Land District	Bearing Correction
DPS 52992	South Auckland	0°00'00"
DPS 8086	South Auckland	-0°02'00"
SO 59226	South Auckland	0°00'00"
DPS 19579	South Auckland	-0°02'00"
DPS 59545	South Auckland	0°00'00"
DP 329944	South Auckland	0°00'00"
SO 34300	South Auckland	-0°02'00"

Territorial Authorities

Waikato District

Comprised In

CT SA47D/654
CT SA19A/1435
CT SA47D/655

Created Parcels

Parcels	Parcel Intent	Area	CT Reference
Lot 1 Deposited Plan 485885	Fee Simple Title	1.4300 Ha	691474
Lot 2 Deposited Plan 485885	Fee Simple Title	1.2312 Ha	691475



CSD Plan - DP 485885

Created Parcels

Parcels	Parcel Intent	Area	CT Reference
Lot 3 Deposited Plan 485885	Fee Simple Title	1.4768 Ha	691476
Lot 5 Deposited Plan 485885	Fee Simple Title	4.6900 Ha	691477
	Hydro		
Area A Deposited Plan 485885	Easement		
Area B Deposited Plan 485885	Easement		
Area C Deposited Plan 485885	Land Covenant		
Area D Deposited Plan 485885	Easement		
Area E Deposited Plan 485885	Easement		
Area F Deposited Plan 485885	Easement		
Area G Deposited Plan 485885	Easement		
Area H Deposited Plan 485885	Easement		
Total Area		<hr/> 8.8280 Ha	

Mark and Vector

Survey Number DP 485885
Meridional Circuit Mount Eden 2000

From	To	Code	Bearing	Adpt Surv	Distance	Adpt Surv
IT VII DPS 59545	IB III DPS 52992	ob90	185°55'00"	M	56.59	M
IB III DPS 52992	IB 7 DP 485885	ob94	67°33'30"	M	83.71	M
IB 7 DP 485885	IS 6 DP 485885	ob100	324°24'00"	M	35.55	M
IS 6 DP 485885	IB 5 DP 485885	ob101	43°57'00"	M	60.78	M
IB 5 DP 485885	IS 4 DP 485885	ob104	357°28'00"	M	54.05	M
IS 4 DP 485885	IB 3 DP 485885	ob107	18°34'30"	M	74.68	M
IB 3 DP 485885	IT VI DPS 52992	ob110	23°12'00"	M	79.34	M
IT VI DPS 52992	IT X DPS 8086	ob117	9°18'40"	M	106.09	M
IT X DPS 8086	IT XV DPS 19579	ob118	107°00'30"	M	64.17	M
IT XV DPS 19579	AR 1 DP 485885	ob120	134°18'30"	M	69.82	M
AR 1 DP 485885	AR 2 DP 485885	ob122	151°20'00"	M	82.98	M
AR 2 DP 485885	IT XIII DPS 19579	ob126	165°53'00"	M	44.29	M
IT XIII DPS 19579	IB I DPS 52992	ob128	288°49'30"	M	159.02	M
IB I DPS 52992	IS XVII DPS 19579	ob49	195°52'20"	M	135.66	M
IS XVII DPS 19579	IB 8 DP 485885	ob55	153°28'00"	M	103.30	M
IB 8 DP 485885	IT XVI DPS 19579	ob62	192°33'20"	M	93.18	M
IT XVI DPS 19579	IS VIII SO 59226	ob78	272°06'30"	M	225.23	M
IS VIII SO 59226	IT VII DPS 59545	ob72	35°32'10"	M	106.72	M
IS XVII DPS 19579	IS II DP 329944	ob56	327°46'00"	M	51.12	M
IS II DP 329944	IB I DPS 52992	ob75	36°25'00"	M	108.42	M
IS II DP 329944	IT I DP 329944	ob76	346°22'10"	M	258.11	M
IT I DP 329944	IS IV DPS 59545	ob19	219°09'30"	M	168.14	M
IS IV DPS 59545	IS V DPS 59545	ob20	155°18'30"	M	142.49	M
IS V DPS 59545	IT VII DPS 59545	ob21	181°08'30"	M	122.49	M
IB I DPS 52992	IT VI DPS 52992	ob50	313°43'00"	M	39.54	M
IB 3 DP 485885	IB I DPS 52992	ob111	52°41'30"	M	75.25	M
IT VII DPS 59545	IB 7 DP 485885	ob91	108°47'00"	M	75.57	M
IB III DPS 52992	PEG VIII d SO 59226	ob95	282°36'00"	M	22.15	M
PEG VIII d SO 59226	IS VIII SO 59226	ob24	224°21'00"	A SO 59226	49.49	A SO 59226
IS 6 DP 485885	IB IV DPS 52992	ob102	48°24'00"	M	40.90	M
IB IV DPS 52992	IB III DPS 52992	ob23	224°44'50"	A DPS 52992	123.95	A DPS 52992
AR 2 DP 485885	PEG DPS 19579	ob127	209°32'00"	M	33.40	M
PEG DPS 19579	IT XIII DPS 19579	ob64	116°58'00"	A DPS 19579	30.60	A DPS 19579
AR 1 DP 485885	PEG DPS 19579	ob123	268°41'00"	M	35.24	M
PEG DPS 19579	IS XIV DPS 19579	ob70	128°05'00"	A DPS 19579	37.91	A DPS 19579
IS XIV DPS 19579	IT XV DPS 19579	ob71	328°34'40"	A DPS 19579	85.52	A DPS 19579
AR 1 DP 485885	UNMK DP 485885	ob124	188°23'00"	C	40.33	C
IT VII DPS 59545	IT IV DPS 8086	ob92	79°48'00"	M	8.20	M
IT VII DPS 59545	PEG VII a SO 59226	ob93	97°29'00"	M	11.11	M
IS VIII SO 59226	PEG DP 485885	ob73	99°17'00"	M	73.31	M
IS VIII SO 59226	PEG VIII b SO 59226	ob74	54°40'00"	M	19.90	M
IT XVI DPS 19579	PEG DP 485885	ob79	302°48'00"	M	45.74	M

Mark and Vector

Survey Number DP 485885
Meridional Circuit Mount Eden 2000

From	To	Code	Bearing	Adpt Surv	Distance	Adpt Surv
IT XVI DPS 19579	PEG DP 485885	ob80	283°42'00"	M	97.67	M
IT XVI DPS 19579	PEG DP 485885	ob81	272°07'30"	M	116.73	M
IT XVI DPS 19579	PEG DPS 19579	ob82	311°19'00"	A DPS 19579	37.94	A DPS 19579
IB 8 DP 485885	PEG DP 485885	ob63	296°33'00"	M	63.60	M
IS XVII DPS 19579	PEG DP 485885	ob57	36°10'00"	M	13.77	M
IS XVII DPS 19579	PEG DP 485885	ob58	331°46'00"	M	8.60	M
IS XVII DPS 19579	PEG DPS 19579	ob59	171°57'30"	M	2.94	M
IS XVII DPS 19579	PEG DP 485885	ob60	254°11'00"	M	9.94	M
IB I DPS 52992	PEG DP 485885	ob51	349°44'00"	M	15.50	M
IB I DPS 52992	PEG DP 485885	ob52	344°21'00"	M	26.82	M
IB I DPS 52992	PEG DPS 52992	ob53	12°31'00"	M	16.85	M
IB 3 DP 485885	IT VI DP 485885	ob112	231°13'30"	M	51.64	M
IB 3 DP 485885	PEG DP 485885	ob113	179°10'00"	M	24.11	M
IB 3 DP 485885	PEG DP 485885	ob114	123°16'00"	M	20.93	M
IB 3 DP 485885	PEG DP 485885	ob115	126°43'00"	M	11.97	M
IB 3 DP 485885	PEG DP 485885	ob116	231°58'00"	M	52.58	M
IB III DPS 52992	PEG DP 485885	ob96	38°42'00"	M	44.13	M
IB III DPS 52992	PEG DP 485885	ob97	255°19'00"	M	21.14	M
IB III DPS 52992	PEG DP 485885	ob98	250°24'00"	M	31.23	M
IB III DPS 52992	PEG DP 485885	ob99	254°14'00"	M	33.61	M
IS 6 DP 485885	PEG DP 485885	ob103	282°07'00"	M	2.84	M
IB 5 DP 485885	PEG DP 485885	ob105	346°25'00"	M	16.76	M
IB 5 DP 485885	PEG DP 485885	ob106	245°45'00"	M	14.94	M
IS 4 DP 485885	PEG DP 485885	ob108	28°14'00"	M	25.44	M
IS 4 DP 485885	PEG DP 485885	ob109	309°39'00"	M	2.72	M
IS XVII DPS 19579	IT XVIII DPS 19579	ob61	29°33'10"	A DPS 19579	122.79	A DPS 19579
IT XVIII DPS 19579	IB I DPS 52992	ob13	315°17'40"	A DPS 52992	33.33	A DPS 52992
IT XVIII DPS 19579	PEG XX DPS 19579	ob14	138°27'00"	A DPS 19579	111.64	A DPS 19579
PEG XX DPS 19579	IT XII DPS 19579	ob65	116°08'30"	A DPS 19579	95.96	A DPS 19579
IT XII DPS 19579	IT XIII DPS 19579	ob67	341°21'50"	A DPS 19579	103.64	A DPS 19579
IT IV DPS 8086	IS V DPS 8086	ob22	71°23'00"	A DPS 8086	71.64	A DPS 8086
IS V DPS 8086	IT VI DPS 8086	ob28	358°58'10"	A DPS 8086	116.44	A DPS 8086
IT VI DPS 8086	PEG DPS 8086	ob30	335°16'20"	A DPS 8086	97.16	A DPS 8086
PEG DPS 8086	IS VII DPS 8086	ob32	335°16'20"	A DPS 8086	4.18	A DPS 8086
IS VII DPS 8086	IS VIII DPS 8086	ob34	61°03'30"	A DPS 8086	81.94	A DPS 8086
IS VIII DPS 8086	PEG DPS 8086	ob35	21°55'00"	A DPS 8086	7.02	A DPS 8086
PEG DPS 8086	IS IX DPS 8086	ob37	21°55'00"	A DPS 8086	48.10	A DPS 8086
IS IX DPS 8086	IT X DPS 8086	ob68	55°13'30"	A DPS 8086	47.66	A DPS 8086
IT VI DP 485885	IT VI DPS 8086	ob84	267°00'00"	C	0.33	C
IS V DPS 8086	PEG DPS 8086	ob29	271°20'00"	A DPS 8086	11.37	A DPS 8086
IT VI DPS 8086	PEG DPS 8086	ob31	263°53'00"	A DPS 8086	1.33	A DPS 8086
PEG DPS 8086	PEG VIIa SO 59226	ob134	177°49'30"	A SO 59226	8.15	A SO 59226
PEG VIIa SO 59226	PEG VIIIId SO 59226	ob43	217°33'00"	A SO 59226	63.08	A SO 59226

Mark and Vector

Survey Number DP 485885
Meridional Circuit Mount Eden 2000

From	To	Code	Bearing	Adpt Surv	Distance	Adpt Surv
PEG VIII d SO 59226	PEG DP 485885	ob25	217°33'00"	A SO 59226	17.62	C
PEG DP 485885	PEG VIII b SO 59226	ob132	217°33'00"	A SO 59226	12.50	C
PEG VIII b SO 59226	UNMK DP 485885	ob145	112°35'00"	C	10.00	C
UNMK DP 485885	PEG DP 485885	ob146	112°35'00"	C	50.77	C
PEG DP 485885	PEG DP 485885	ob4	77°42'00"	C	36.93	C
PEG DP 485885	UNMK DP 485885	ob2	49°10'00"	C	15.41	C
PEG DP 485885	UNMK DP 485885	ob1	88°19'40"	A DPS 19579	7.87	C
UNMK DP 485885	PEG DP 485885	ob172	88°19'40"	A DPS 19579	48.60	C
PEG DP 485885	PEG DP 485885	ob0	1°06'20"	C	94.62	C
PEG DP 485885	PEG DP 485885	ob3	1°06'20"	C	61.29	C
PEG DP 485885	PEG DP 485885	ob7	28°07'00"	C	11.66	C
PEG DP 485885	PEG DP 485885	ob6	73°49'00"	C	12.70	C
IB I DPS 52992	PEG DPS 19579	ob54	117°51'00"	A DPS 52992	32.10	A DPS 52992
PEG DPS 19579	POST DPS 52992	ob15	318°44'00"	A DPS 52992	19.37	A DPS 52992
POST DPS 52992	UNMK DP 485885	ob17	324°42'00"	A DPS 52992	16.29	C
UNMK DP 485885	PEG DPS 52992	ob161	324°42'00"	A DPS 52992	4.41	C
PEG DP 485885	UNMK DP 485885	ob5	28°47'50"	A DPS 19579	102.96	C
UNMK DP 485885	UNMK DP 485885	ob166	28°47'50"	A DPS 19579	5.02	C
UNMK DP 485885	PEG DPS 19579	ob165	28°47'50"	A DPS 19579	11.13	C
PEG DPS 19579	PEG DPS 19579	ob16	24°46'30"	A DPS 19579	86.63	A DPS 19579
PEG DP 485885	PEG DPS 8086	ob144	258°46'00"	C	0.50	C
PEG DP 485885	PEG DP 485885	ob85	258°46'00"	C	42.59	C
PEG DP 485885	PEG DP 485885	ob86	28°36'00"	C	19.31	C
PEG DP 485885	PEG DP 485885	ob88	118°41'00"	C	9.00	C
PEG DP 485885	PEG DP 485885	ob87	28°41'00"	C	82.46	C
PEG DP 485885	UNMK DP 485885	ob8	79°27'00"	C	3.29	C
UNMK DP 485885	PEG DPS 52992	ob163	79°27'00"	C	3.24	C
PEG DPS 8086	PEG DPS 8086	ob135	71°39'00"	A DPS 8086	56.77	A DPS 8086
PEG DPS 8086	PEG 3 DP 329944	ob141	3°54'20"	A DPS 8086	101.08	A DP 329944
PEG DPS 8086	PEG DPS 8086	ob36	336°01'00"	A DPS 8086	96.74	A DPS 8086
PEG DPS 8086	PEG DPS 8086	ob33	55°26'30"	A DPS 8086	88.09	A DPS 8086
PEG DPS 8086	UNMK DP 485885	ob38	39°28'00"	A DPS 8086	13.79	C
UNMK DP 485885	UNMK DP 485885	ob157	39°28'00"	A DPS 8086	4.00	C
UNMK DP 485885	PEG DPS 8086	ob155	39°28'00"	A DPS 8086	40.11	C
PEG DPS 8086	PEG DPS 52992	ob39	106°13'30"	A DPS 52992	51.05	A DPS 52992
PEG DPS 52992	PEG DPS 52992	ob40	223°07'00"	A DPS 52992	22.53	A DPS 52992
PEG DPS 52992	PEG DPS 52992	ob41	211°38'00"	A DPS 52992	35.69	A DPS 52992
PEG DPS 52992	IT VI DPS 52992	ob42	215°12'00"	A DPS 52992	20.28	A DPS 52992
PEG DP 485885	UNMK DP 485885	ob9	331°53'00"	A DPS 52992	9.14	C
UNMK DP 485885	PEG DPS 52992	ob159	331°53'00"	A DPS 52992	11.35	C
PEG DPS 52992	PEG DP 485885	ob18	310°45'00"	A DPS 52992	14.36	A DPS 52992
PEG DPS 8086	UNMK DP 485885	ob142	90°19'00"	C	11.71	C
UNMK DP 485885	PEG DP 485885	ob148	90°19'00"	C	50.12	C

Mark and Vector

Survey Number DP 485885
Meridional Circuit Mount Eden 2000

From	To	Code	Bearing	Adpt Surv	Distance	Adpt Surv
PEG DPS 19579	PEG DPS 19579	ob10	1°06'20"	A DPS 19579	155.41	A DPS 19579
PEG DPS 19579	PEG DPS 19579	ob11	257°38'00"	A DPS 19579	254.43	A DPS 19579
PEG DPS 19579	PEG SO 34300	ob44	314°43'00"	A SO 34300	20.00	A DPS 19579
PEG SO 34300	PEG SO 31160	ob45	8°37'00"	A SO 34300	21.95	A SO 34300
PEG SO 31160	PEG DPS 19579	ob46	50°32'20"	A DPS 19579	51.20	A DPS 19579
PEG DPS 19579	NAIL VIIIa SO 59226	ob47	27°11'30"	A DPS 19579	9.11	A SO 59226
NAIL VIIIa SO 59226	PEG VIIIb SO 59226	ob48	37°33'00"	A SO 59226	24.67	A SO 59226
PEG DPS 19579	PEG XX DPS 19579	ob12	27°07'00"	A DPS 19579	256.47	A DPS 19579
PEG XX DPS 19579	PEG DPS 19579	ob66	20°17'00"	A DPS 19579	74.39	A DPS 19579
PEG DP 485885	PEG DP 485885	ob133	114°40'00"	C	3.22	C
PEG DP 485885	PEG DP 485885	ob131	60°18'00"	C	10.33	C
PEG DP 485885	PEG DP 485885	ob130	50°21'30"	C	62.39	C
PEG DP 485885	PEG DP 485885	ob129	44°14'00"	C	37.71	C
PEG DP 485885	PEG DPS 8086	ob136	40°24'00"	C	25.50	C
PEG DPS 8086	PEG DP 485885	ob143	40°05'00"	C	23.02	C
PEG DP 485885	PEG DP 485885	ob138	23°21'00"	C	24.43	C
PEG DP 485885	PEG DP 485885	ob137	359°12'00"	C	39.45	C
PEG DP 485885	PEG DP 485885	ob140	34°21'00"	C	25.04	C
PEG DP 485885	PEG DP 485885	ob139	26°31'00"	C	27.12	C
PEG DP 485885	UNMK DP 485885	ob89	28°41'00"	C	88.78	C
UNMK DP 485885	PEG DP 485885	ob173	28°41'00"	C	0.80	C
UNMK DP 485885	UNMK DP 485885	ob147	56°47'00"	C	18.44	C
UNMK DP 485885	UNMK DP 485885	ob150	50°21'30"	C	63.65	C
UNMK DP 485885	UNMK DP 485885	ob26	44°14'00"	C	38.49	C
UNMK DP 485885	UNMK DP 485885	ob27	40°24'00"	C	25.80	C
UNMK DP 485885	UNMK DP 485885	ob69	40°05'00"	C	7.52	C
UNMK DP 485885	UNMK DP 485885	ob149	40°05'00"	C	23.81	C
UNMK DP 485885	UNMK DP 485885	ob151	23°21'00"	C	16.56	C
UNMK DP 485885	UNMK DP 485885	ob152	359°12'00"	C	43.41	C
UNMK DP 485885	UNMK DP 485885	ob153	34°21'00"	C	22.81	C
UNMK DP 485885	PEG DP 485885	ob154	27°23'00"	C	46.69	C
UNMK DP 485885	UNMK DP 485885	ob156	131°16'00"	C	60.76	C
UNMK DP 485885	UNMK DP 485885	ob160	131°16'00"	C	17.62	C
UNMK DP 485885	UNMK DP 485885	ob167	49°50'00"	C	2.67	C
UNMK DP 485885	UNMK DP 485885	ob168	139°50'00"	C	1.00	C
UNMK DP 485885	UNMK DP 485885	ob169	229°50'00"	C	2.68	C
UNMK DP 485885	UNMK DP 485885	ob170	155°54'00"	C	9.45	C
UNMK DP 485885	UNMK DP 485885	ob162	155°54'00"	C	41.20	C
UNMK DP 485885	UNMK DP 485885	ob158	131°16'00"	C	69.35	C
UNMK DP 485885	UNMK DP 485885	ob174	131°16'00"	C	8.67	C
UNMK DP 485885	UNMK DP 485885	ob175	155°54'00"	C	3.87	C
UNMK DP 485885	UNMK DP 485885	ob164	155°54'00"	C	49.31	C
AR 2 DP 485885	UNMK DP 485885	ob125	305°46'00"	C	56.30	C

Mark and Vector

Survey Number DP 485885
Meridional Circuit Mount Eden 2000

From	To	Code	Bearing	Adpt Surv	Distance	Adpt Surv
UNMK DP 485885	UNMK DP 485885	ob171	347°44'00"	C	8.28	C
UNMK DP 485885	UNMK DP 485885	ob176	295°30'00"	C	15.21	C
UNMK DP 485885	UNMK DP 485885	ob177	258°47'00"	C	10.46	C
UNMK DP 485885	UNMK DP 485885	ob178	229°10'00"	C	8.21	C
UNMK DP 485885	UNMK DP 485885	ob179	139°10'00"	C	21.41	C
UNMK DP 485885	PEG DP 485885	ob180	49°10'00"	C	13.35	C
IT XV DPS 19579	UNMK DP 485885	ob119	157°50'30"	C	64.86	C
AR 1 DP 485885	UNMK DP 485885	ob121	246°06'00"	C	27.89	C
IS II DP 329944	PEG 3 DP 329944	ob77	261°03'00"	A DP 329944	38.90	A DP 329944
PEG 3 DP 329944	PEG DPS 8086	ob181	3°54'20"	A DPS 8086	15.23	A DP 329944

Mark Name	Description
AR 1 DP 485885	Aluminium Rivet in Sandstone Bedrock
AR 2 DP 485885	Aluminium Rivet in Sandstone Bedrock
IB 3 DP 485885	Iron Bar in sloped paddock down 0.4
IB 5 DP 485885	Iron Bar flush in eastern edge of seal
IB 7 DP 485885	Iron Bar down 0.3 in ridgeline, 23.5m south of wooden powerpole
IB I DPS 52992	Iron Bar dn 0.25 in paddock, 16m south of gate
IB III DPS 52992	Iron Bar down 0.3 in paddock, 2.0m south of edge of seal
IB IV DPS 52992	Iron Bar in top of cutting dn 0.2
IS 4 DP 485885	Iron Spike flush in western edge of seal
IS 6 DP 485885	Iron Spike flush in western edge of seal
IS II DP 329944	Spike now beneath new driveway formation, likely destroyed.
IS IV DPS 59545	Iron Spike in Western road berm dn 0.3
IS V DPS 59545	Iron Spike dn 20mm in eastern edge of seal
IT I DP 329944	(0.2D)
IT VI DP 485885	OIT VI DPS 8086 Found Disturbed
IT VI DPS 52992	Iron Tube down 0.25 in paddock, 20m northwest of driveway fence
IT VII DPS 59545	Iron Tube dn 0.25 in berm, 5.3m Northeast of STOP 200 Signpost
IT X DPS 8086	Rusty Tube in muddy stream sticking up 50mm
IT XIII DPS 19579	Tube in Sandstone Bedrock sticking up 0.05
IT XV DPS 19579	Tube in Sandstone Bedrock sticking up 0.05
NAIL VIIIa SO 59226	Nail in foot of stay
PEG DP 485885	OP DPS 52992 renewed
PEG DPS 19579	Old Peg at bottom of bank in sandstone bedrock
PEG DPS 19579	Old Peg at foot of bank inside vegetation
PEG VIIIb SO 59226	Old Peg twisted behind power box

Mark and Vector

Survey Number DP 485885
Meridional Circuit Mount Eden 2000

Mark Name	Description
PEG VIIa SO 59226	Old Peg in good condition at top of bank in paddock

***** End of Report *****

Memorandum of Easements			
Purpose	Shown	Servient Tenement	Dominant Tenement
Right of Way	A	Lot 1 hereon	Lots 2 & 3 hereon & Lot 1 DPS 52992
	B	Lot 2 hereon	Lot 3 hereon & Lot 1 DPS 52992
	D, G	Lot 3 hereon	Lot 1 DPS 52992

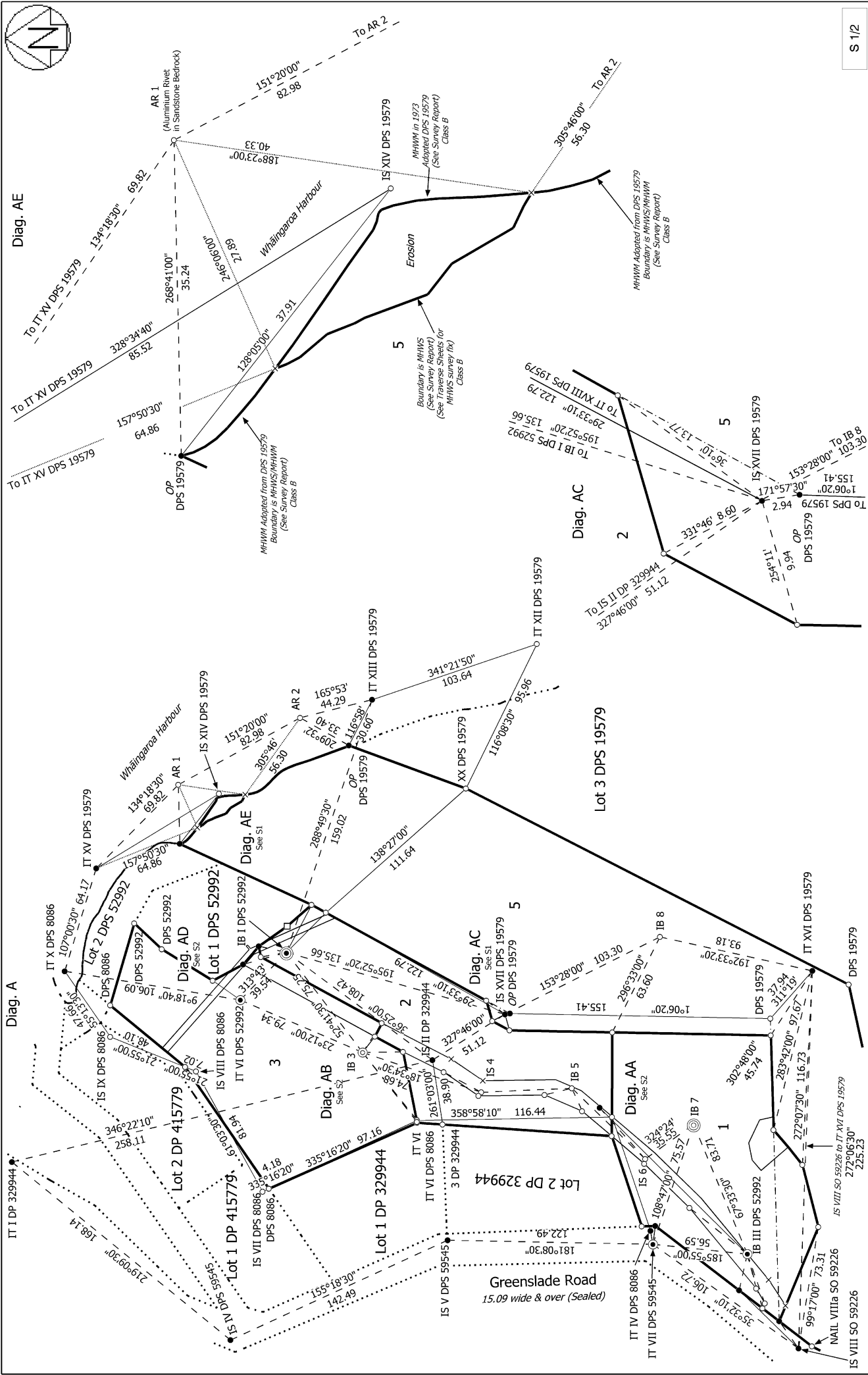
Schedule of Easements			
Purpose	Shown	Servient Tenement	Dominant Tenement
Right to convey electricity, water, telecommunications & computer media	A	Lot 1 hereon	Lots 2 & 3 hereon
	B	Lot 2 hereon	Lot 3 hereon

Schedule of Easements in Gross			
Purpose	Shown	Servient Tenement	Grantee
Right to Convey Electricity	E, G	Lot 3 hereon	WEL Networks Ltd.
	F	Lot 1 DPS 52992	
	H	Lot 2 hereon	
Right to Convey Telecommunications & Computer Media	A	Lot 1 hereon	Chorus N.Z. Ltd.
	B	Lot 2 hereon	
	D, G	Lot 3 hereon	

N.B. Area C is subject to a Consent Notice.

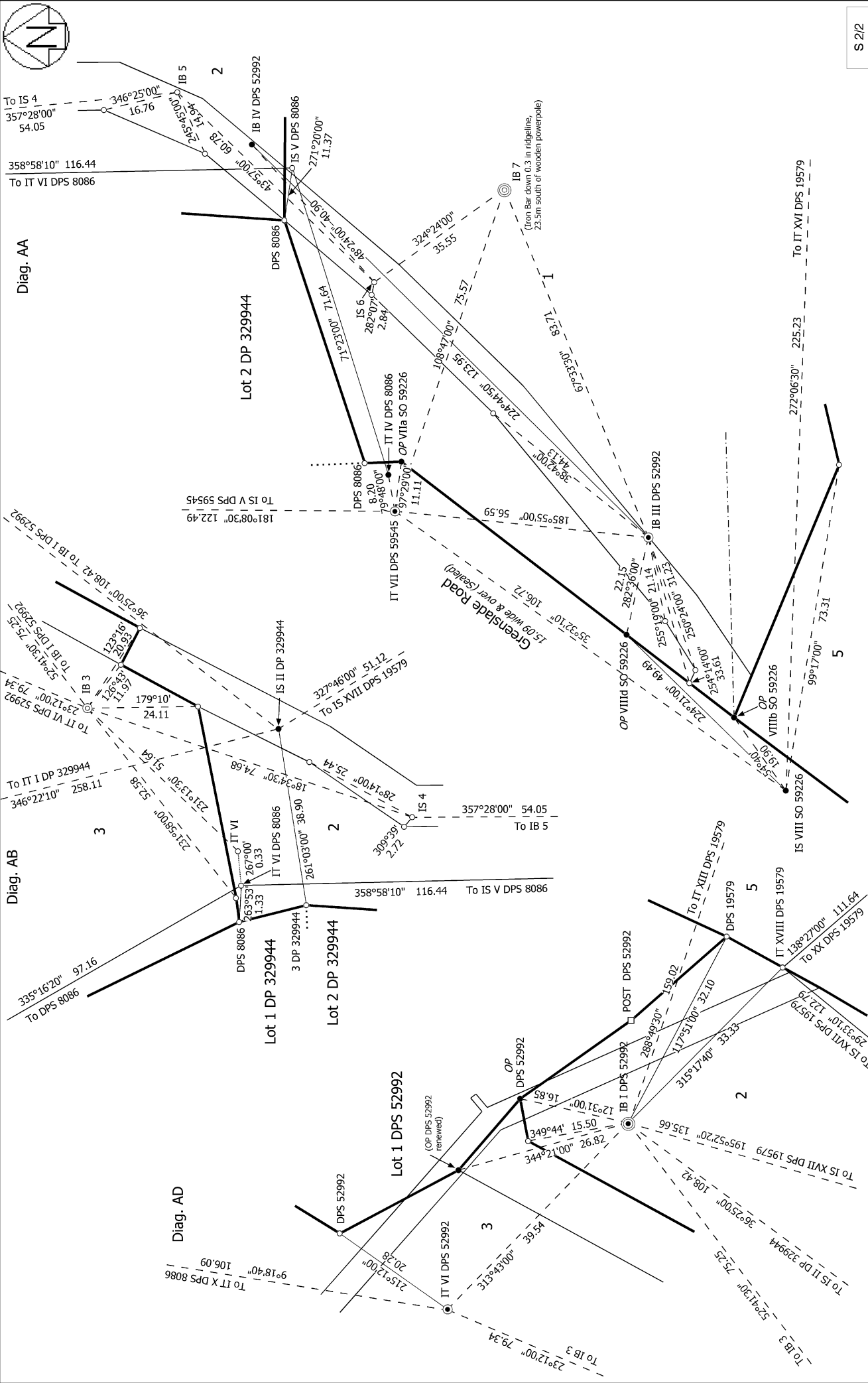


DP 485885



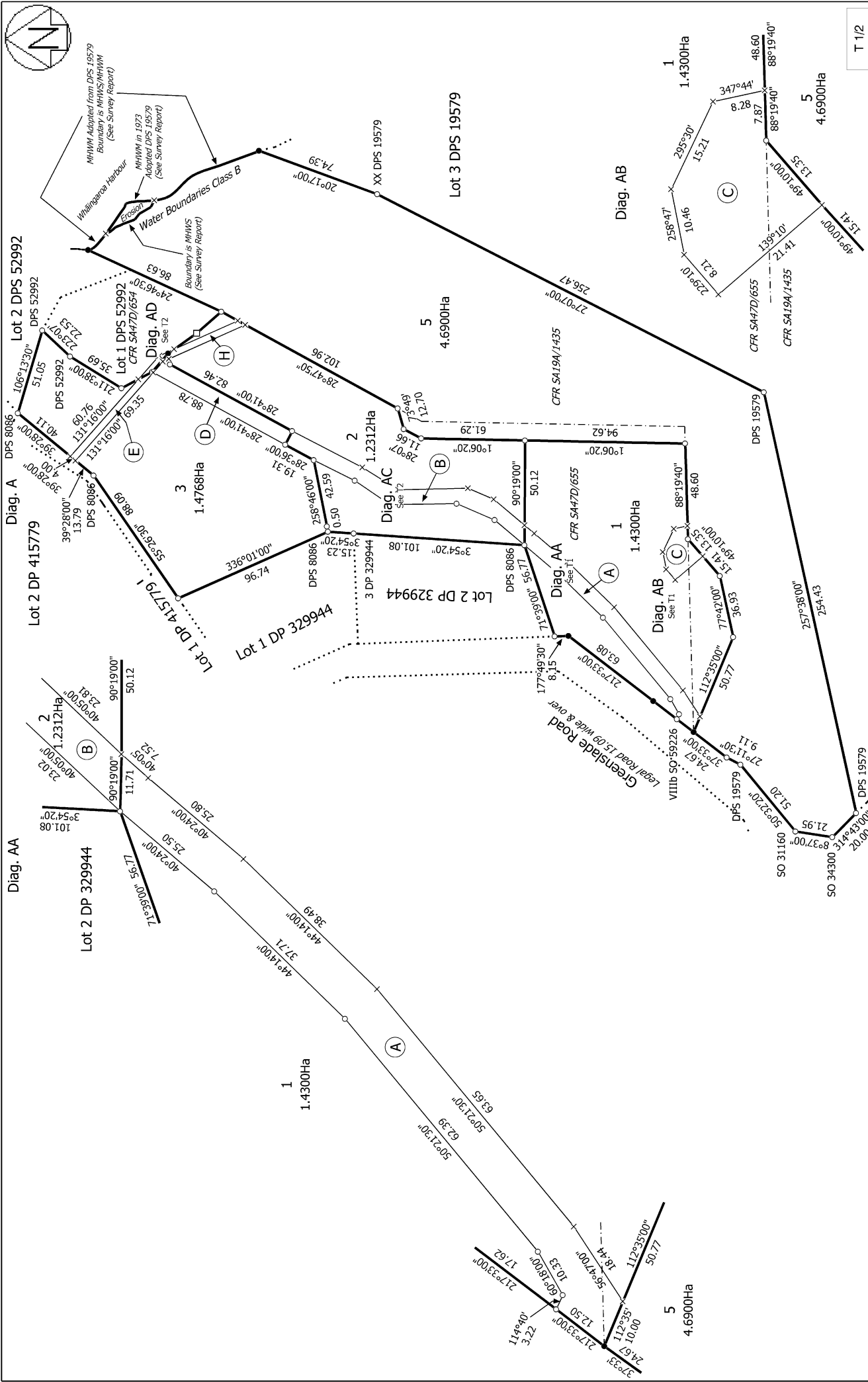
S 1/2

<p>Land District: South Auckland</p> <p>Digitally Generated Plan</p> <p>Generated on: 23/06/2017 06:11 am Page 13 of 16</p>	<p>Lots 1, 2, 3 and 5 being a Subdivision of Pt. Lots 1 and 2 DPS 19579 and Easements over Lot 1 DPS 52992</p> <p>Surveyor: David Vernon McCracken</p> <p>Firm: McCracken Surveys Ltd</p> <p>Survey Date: 15/06/2015</p>	<p>CSD Plan</p> <p>DP 485885</p> <p>Deposited on: 14/06/2017</p>
--	---	--



S 2/2

<p>Land District: South Auckland</p> <p>Digitally Generated Plan</p> <p>Generated on: 23/06/2017 06:11:am Page 14 of 16</p>	<p>Lots 1, 2, 3 and 5 being a Subdivision of Pt. Lots 1 and 2 DPS 19579 and Easements over Lot 1 DPS 52992</p>	<p>Surveyor: David Vernon McCracken</p> <p>Firm: McCracken Surveys Ltd</p> <p>Survey Date: 15/06/2015</p>	<p>CSD Plan</p> <p>DP 485885</p> <p>Deposited on: 14/06/2017</p>
--	---	---	--



T 1/2

<p>Land District: South Auckland</p> <p>Digitally Generated Plan</p> <p>Generated on: 23/06/2017 06:11 am Page 15 of 16</p>	<p>Lots 1, 2, 3 and 5 being a Subdivision of Pt. Lots 1 and 2 DPS 19579 and Easements over Lot 1 DPS 52992</p>	<p>Surveyor: David Vernon McCracken</p> <p>Firm: McCracken Surveys Ltd</p> <p>Survey Date: 15/06/2015</p>	<p>CSD Plan</p> <p>DP 485885</p> <p>Deposited on: 14/06/2017</p>
--	---	---	--

