



CSD Plan - DP 472114

Survey Number DP 472114
Surveyor Reference 60975 - 89 Clovelly Road
Surveyor William Yat-Wah Cheung
Survey Firm Wood & Partners Consultants Ltd
Surveyor Declaration I William Yat-Wah Cheung, being a licensed cadastral surveyor, certify that:
(a) this dataset provided by me and its related survey are accurate, correct and in accordance with the Cadastral Survey Act 2002 and the Rules for Cadastral Survey 2010, and
(b) the survey was undertaken by me or under my personal direction.
Declared on 25 Jun 2014 02:00 PM

Survey Details

Dataset Description LOTS 1, 2, 3, 4, AND 100 BEING A SUBDIVISION OF LOT 42 DP 17870
Purpose LT Subdivision
Status Deposited **Type** Survey
Land District North Auckland **Survey Class** Class A
Meridional Circuit Mount Eden 2000

Survey Dates

Surveyed Date 14/01/2014 **Certified Date** 25/06/2014
Submitted Date 25/06/2014 14:00:51 **Survey Approval Date** 10/07/2014
Deposit Date 29/07/2014

Referenced Surveys

Survey Number	Land District	Bearing Correction
DP 123948	North Auckland	0°00'00"
DP 17870	North Auckland	0°00'00"
DP 205633	North Auckland	0°00'00"
SO 469450	North Auckland	0°00'00"

Territorial Authorities

Auckland

Comprised In

CT NA644/180

Created Parcels

Parcels	Parcel Intent	Area	CT Reference
Lot 1 Deposited Plan 472114	Fee Simple Title	0.0291 Ha	642650
Lot 2 Deposited Plan 472114	Fee Simple Title	0.0290 Ha	642651
Lot 3 Deposited Plan 472114	Fee Simple Title	0.0290 Ha	642652
Lot 4 Deposited Plan 472114	Fee Simple Title	0.0287 Ha	642653
Lot 100 Deposited Plan 472114	Fee Simple Title	0.0173 Ha	Multiple
Area A Deposited Plan 472114	Easement		
Total Area		<u>0.1331 Ha</u>	

Mark and Vector

Survey Number DP 472114
Meridional Circuit Mount Eden 2000

From	To	Code	Bearing	Adpt Surv	Distance	Adpt Surv
SM 4740 SO 57787	SSN I DP 196049	ob0	337°08'20"	M	114.03	M
SSN I DP 196049	BS II DP 123948	ob9	322°16'20"	M	44.28	M
SM 4740 SO 57787	SSN II DP 205633	ob1	332°59'40"	A DP 123948	78.53	A DP 205633
SSN II DP 205633	SSN I DP 205633	ob13	332°59'40"	A DP 123948	4.93	A DP 205633
SSN I DP 205633	ALP 2 SO 469450	ob14	332°59'40"	A DP 123948	1.65	A SO 469450
ALP 2 SO 469450	ALP 4 SO 469450	ob15	332°59'40"	M	8.33	M
NAIL 13 DP 472114	IT I DP 123948	ob60	332°59'40"	A DP 123948	0.44	C
IT I DP 123948	BS II DP 123948	ob19	332°59'40"	A DP 123948	41.29	A DP 123948
SSN I DP 196049	ALP 4 SO 469450	ob10	175°05'00"	A SO 469450	21.91	A SO 469450
SSN I DP 196049	ALP 2 SO 469450	ob11	169°03'00"	A SO 469450	29.79	A SO 469450
ALP 2 SO 469450	PEG 12 DP 17870	ob16	318°54'00"	A SO 469450	22.83	A SO 469450
PEG 12 DP 17870	PEG 27 SO 469450	ob21	242°09'00"	A DP 17870	47.47	A SO 469450
PEG 27 SO 469450	DISK 21 SO 469450	ob23	242°09'00"	A DP 17870	10.64	A SO 469450
DISK 100 SO 469450	UNMK 22 DP 17870	ob26	152°12'00"	A DP 123948	2.00	A SO 469450
UNMK 22 DP 17870	PEG 101 SO 469450	ob27	62°09'00"	A DP 17870	1.00	A SO 469450
PEG 101 SO 469450	DISK 24 SO 469450	ob28	62°09'00"	A DP 17870	11.95	A SO 469450
DISK 24 SO 469450	PEG 25 SO 469450	ob29	62°09'00"	A DP 17870	15.06	A SO 469450
PEG 25 SO 469450	PEG 23 DP 205633	ob30	62°09'00"	A DP 17870	14.77	A SO 469450
PEG 23 DP 205633	PEG 26 SO 469450	ob31	62°09'00"	A DP 17870	0.30	A SO 469450
PEG 26 SO 469450	DISK 11 SO 469450	ob32	62°09'00"	A DP 17870	15.06	A SO 469450
DISK 11 SO 469450	SSN II DP 205633	ob33	110°58'00"	A DP 205633	7.80	A DP 205633
PEG 12 DP 17870	DISK 21 DP 472114	ob22	152°09'40"	A SO 58319	3.66	C
DISK 21 DP 472114	DISK 11 SO 469450	ob34	152°09'40"	A SO 58319	19.27	C
PEG 27 SO 469450	DISK 22 DP 472114	ob24	152°09'00"	C	3.65	C
DISK 22 DP 472114	DISK 23 DP 472114	ob35	62°10'00"	C	1.00	C
DISK 23 DP 472114	DISK 24 DP 472114	ob36	62°10'00"	C	15.06	C
DISK 24 DP 472114	DISK 25 DP 472114	ob38	62°10'00"	C	15.05	C
DISK 25 DP 472114	DISK 21 DP 472114	ob40	62°10'00"	C	16.36	C
DISK 23 DP 472114	DISK 26 DP 472114	ob37	107°09'00"	C	1.84	C
DISK 26 DP 472114	DISK 24 SO 469450	ob42	152°09'00"	C	17.98	C
DISK 24 DP 472114	DISK 27 DP 472114	ob39	104°50'00"	C	1.76	C
DISK 27 DP 472114	PEG 25 SO 469450	ob43	152°09'00"	C	18.08	C
DISK 25 DP 472114	DISK 28 DP 472114	ob41	109°16'00"	C	1.92	C
DISK 28 DP 472114	PEG 26 SO 469450	ob44	152°09'00"	C	17.87	C
SSN I DP 196049	ALP 11 DP 472114	ob12	233°35'00"	M	50.39	M
ALP 11 DP 472114	ALP 10 DP 472114	ob47	233°35'00"	M	9.82	M
ALP 4 SO 469450	NAIL 13 DP 472114	ob18	332°59'40"	M	22.08	M
ALP 10 DP 472114	IS 12 DP 472114	ob57	74°10'00"	M	28.29	M
IS 12 DP 472114	NAIL 13 DP 472114	ob62	26°50'30"	M	28.99	M
NAIL 13 DP 472114	ALP 10 DP 472114	ob58	230°11'30"	M	52.46	M
ALP 11 DP 472114	NAIL 13 DP 472114	ob45	49°25'30"	M	42.67	M
IS 12 DP 472114	SSN I DP 196049	ob61	37°10'00"	M	35.16	M

Mark and Vector

Survey Number DP 472114
Meridional Circuit Mount Eden 2000

From	To	Code	Bearing	Adpt Surv	Distance	Adpt Surv
NAIL 13 DP 472114	SSN I DP 196049	ob59	75°10'00"	M	8.45	M
SSN I DP 196049	DISK 21 DP 472114	ob2	206°34'00"	M	17.09	M
ALP 10 DP 472114	DISK 21 SO 469450	ob48	254°17'00"	M	12.75	M
ALP 10 DP 472114	DISK 22 DP 472114	ob49	214°17'00"	M	2.07	M
ALP 10 DP 472114	DISK 23 DP 472114	ob50	192°45'00"	M	1.28	M
ALP 10 DP 472114	DISK 26 DP 472114	ob51	140°27'00"	M	2.32	M
ALP 10 DP 472114	DISK 24 DP 472114	ob52	66°03'00"	M	14.26	M
SSN I DP 196049	DISK 25 DP 472114	ob3	223°58'00"	M	31.85	M
SSN I DP 196049	DISK 28 DP 472114	ob4	220°45'00"	M	31.10	M
SSN I DP 196049	DISK 27 DP 472114	ob5	227°57'00"	M	45.40	M
ALP 11 DP 472114	IS 12 DP 472114	ob46	84°25'30"	M	19.41	M
SSN I DP 196049	DISK 26 DP 472114	ob6	231°23'00"	M	60.13	M
SSN I DP 196049	DISK 23 DP 472114	ob7	232°48'30"	M	61.18	M
SSN I DP 196049	DISK 22 DP 472114	ob8	232°57'30"	M	62.17	M
ALP 10 DP 472114	DISK 27 DP 472114	ob53	70°05'00"	M	15.67	M
ALP 10 DP 472114	DISK 25 DP 472114	ob54	64°03'00"	M	29.30	M
ALP 10 DP 472114	DISK 28 DP 472114	ob55	66°36'00"	M	30.68	M
ALP 10 DP 472114	DISK 21 DP 472114	ob56	63°23'00"	M	45.65	M
IT I DP 123948	CP III DP 123948	ob20	238°51'40"	A DP 123948	19.49	A DP 123948
CP III DP 123948	IT IV DP 123948	ob63	238°51'40"	A DP 123948	41.78	A DP 123948
IT IV DP 123948	IS (105) DP 40552	ob64	237°28'00"	A DP 123948	7.55	A DP 123948
IS (105) DP 40552	DISK 21 SO 469450	ob65	104°44'00"	A DP 40552	6.65	A DP 40552
ALP 2 SO 469450	DISK 11 SO 469450	ob17	234°27'00"	A SO 469450	5.28	A SO 469450
UNMK 12 DP 72307	DISK 100 SO 469450	ob66	152°12'00"	A DP 123948	10.68	C
DISK 21 SO 469450	UNMK 12 DP 72307	ob25	152°12'00"	A DP 123948	10.25	C

Mark Name	Description
ALP 10 DP 472114	PLUG IN CONCRETE DRIVEWAY
ALP 11 DP 472114	PLUG IN CONCRETE DRIVEWAY
ALP 2 SO 469450	IN FOOTPATH
ALP 4 SO 469450	IN FOOTPATH
BS II DP 123948	NAIL IN CONCRETE CHANNEL.
DISK 100 SO 469450	DISK IN FENCE POST
DISK 21 SO 469450	DISK ON TOP OF WOODEN FENCE POST.
DISK 24 SO 469450	DISK IN CONCRETE DRIVEWAY
IS 12 DP 472114	IRON SPIKE BURIED 0.3m
NAIL 13 DP 472114	OLD NAIL IN CONCRETE FOOTPATH. NO RECORD FOUND. TREATED AS NEW.
SM 4740 SO 57787	L&S BRONZE PLAQUE SET IN CONCRETE UNDER LID.

Mark and Vector

Survey Number DP 472114
Meridional Circuit Mount Eden 2000

Mark Name	Description
SSN I DP 196049	FLUSH IN CONCRETE CHANNEL.

***** End of Report *****



SUBDIVISION OF LOT 42 DP 17870	
LAND REGISTRATION DISTRICT	NORTH AUCKLAND
PLAN NUMBER	DP 472114
TERRITORIAL AUTHORITY	AUCKLAND COUNCIL
TERRITORIAL AUTHORITY REF	42135
DATE	June 2014
OUR REF	60970 – 89 Clovelly Road

MEMORANDUM OF EASEMENT IN GROSS			
PURPOSE	SHOWN AS	SERVIENT TENEMENT	GRANTEE
RIGHT TO CONVEY TELECOMMUNICATIONS AND MEDIA	AREA A HEREON	LOT 100 HEREON	CHORUS NEW ZEALAND LTD

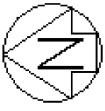


SUBDIVISION OF LOT 42 DP 17870	
LAND REGISTRATION DISTRICT	NORTH AUCKLAND
PLAN NUMBER	DP 472114
TERRITORIAL AUTHORITY	AUCKLAND COUNCIL
TERRITORIAL AUTHORITY REF	42135
DATE	14/01/2014
OUR REF	60970 – 89 Clovelly Road

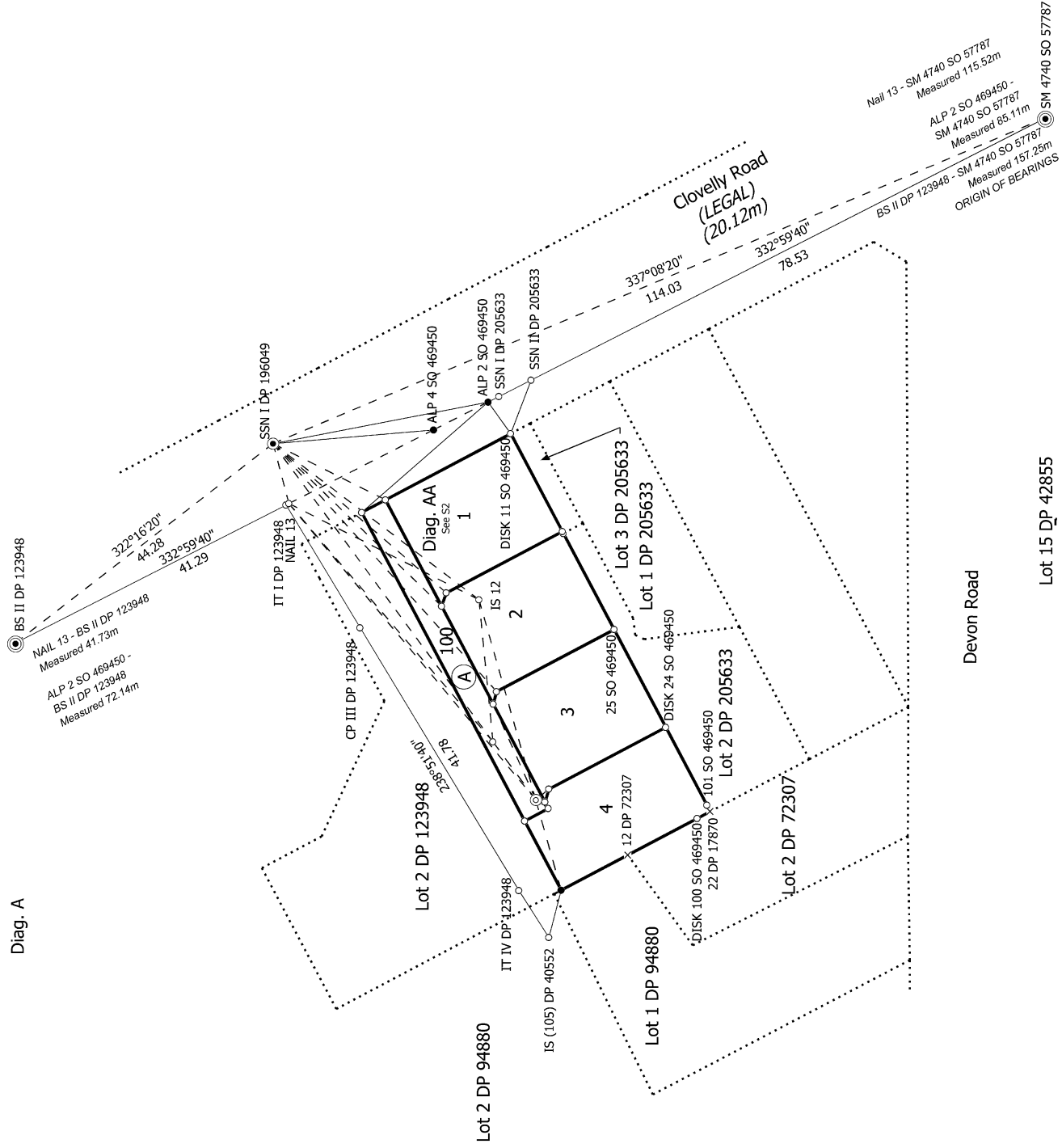
AMALGAMATION CONDITION

THAT LOT 100 HEREON (JOINTLY OWNED ACCESS LOT) SHALL BE HELD AS TO FOUR UNDIVIDED ONE QUARTER SHARES BY THE OWNERS OF LOTS 1, 2, 3 AND 4, HEREON AS TENANTS IN COMMON IN THE SAID SHARES AND THAT INDIVIDUAL COMPUTER FREEHOLD REGISTERS (CERTIFICATES OF TITLE) SHALL BE ISSUED IN ACCORDANCE THEREWITH.

SEE CSN REF: 1221747



Diag. A



Lot 15 DP 42855

S 1/2

Land District: North Auckland

Digitally Generated Plan

Generated on: 11/08/2014 10:58am; Page 8 of 10

LOTS 1, 2, 3, 4, AND 100 BEING A SUBDIVISION OF LOT 42 DP 17870

Surveyor: William Yat-Wah Cheung
Firm: Wood & Partners Consultants Ltd
Survey Date: 14/01/2014

CSD Plan
DP 472114

Deposited on: 29/07/2014

