



# CSD Plan - DP 460783

---

**Survey Number** DP 460783  
**Surveyor Reference** J111 Purvis  
**Surveyor** Cameron John Leckie  
**Survey Firm** G M ONeill Surveying Ltd  
**Surveyor Declaration** I Cameron John Leckie, being a licensed cadastral surveyor, certify that:  
(a) this dataset provided by me and its related survey are accurate, correct and in accordance with the Cadastral Survey Act 2002 and the Rules for Cadastral Survey 2010, and  
(b) the survey was undertaken by me or under my personal direction.  
Declared on 06 Mar 2013 04:19 PM

---

## Survey Details

**Dataset Description** Lot 1 formerly Section 558R, Section 559R and Part Section 14-16 Block II Otepopo Survey District and Accretion

**Purpose** LT Subdivision

**Status** Deposited **Type** Survey

**Land District** Otago **Survey Class** Class B

**Meridional Circuit** Observation Point 2000

---

## Survey Dates

**Surveyed Date** 11/01/2013 **Certified Date** 06/03/2013  
**Submitted Date** 06/03/2013 16:19:57 **Survey Approval Date** 08/03/2013  
**Deposit Date** 06/10/2014

---

## Referenced Surveys

Survey Number	Land District	Bearing Correction
SO 6126	Otago	-0°01'00"
DP 23657	Otago	0°00'00"
SO 13553	Otago	-0°00'30"
DP 827	Otago	-0°01'00"
SO 388708	Otago	0°00'00"
SO 394268	Otago	0°00'00"

---

## Territorial Authorities

Waitaki District

---

## Comprised In

CT OT10D/1176

---

## Created Parcels

Parcels	Parcel Intent	Area	CT Reference
Lot 1 Deposited Plan 460783	Fee Simple Title	34.4447 Ha	711310
<b>Total Area</b>		34.4447 Ha	

---

# Mark and Vector

**Survey Number** DP 460783

**Coordinate System** Observation Point 2000

From	To	Code	Bearing	Adpt Surv	Distance	Adpt Surv
B (Otepopo SD)	IT II DP 23557	ob0	224°43'40"	M	1,380.295	M
IT II DP 23557	IT XIII SO 388708	ob8	344°18'10"	M	764.67	M
IT XIII SO 388708	B (Otepopo SD)	ob12	78°16'40"	M	1,203.33	M
B (Otepopo SD)	IT VI DP 4330	ob1	258°37'10"	M	1,174.38	M
IT VI DP 4330	IT XIII SO 388708	ob13	244°40'00"	M	29.80	M
B (Otepopo SD)	IT XIV SO 388708	ob2	249°58'10"	M	1,233.23	M
IT XIV SO 388708	IT XIII SO 388708	ob14	353°42'20"	A SO 388708	179.00	A SO 388708
B (Otepopo SD)	IT XV SO 388708	ob3	239°34'40"	M	1,274.60	M
IT XV SO 388708	IT XIII SO 388708	ob16	348°50'20"	M	408.65	M
B (Otepopo SD)	IT V SO 13553	ob4	227°06'10"	M	1,508.51	M
IT V SO 13553	IT XIII SO 388708	ob18	354°39'30"	M	785.74	M
B (Otepopo SD)	PEG 2 DP 460783	ob5	223°35'25"	M	1,310.46	M
PEG 2 DP 460783	IT XIII SO 388708	ob20	338°42'15"	M	756.31	M
B (Otepopo SD)	PEG 1 DP 460783	ob6	200°58'10"	M	813.07	M
PEG 1 DP 460783	IT XIII SO 388708	ob21	300°07'10"	M	1,025.75	M
B (Otepopo SD)	IT I DP 460783	ob7	203°50'50"	M	865.20	M
IT I DP 460783	IT XIII SO 388708	ob22	303°25'40"	M	992.61	M
IT XIV SO 388708	IT XV SO 388708	ob15	165°02'35"	A SO 394268	230.81	A SO 394268
IT XV SO 388708	IT VII SO 13553	ob17	183°23'00"	A SO 388708	225.97	A SO 388708
IT VII SO 13553	IT V SO 13553	ob24	177°18'30"	A SO 13553	156.03	A SO 13553
IT V SO 13553	IS VII DP 7593	ob19	10°28'00"	A DP 23657	69.76	A DP 23657
IS VII DP 7593	IT II DP 23557	ob26	100°29'00"	A DP 23657	123.11	A DP 23657
IT II DP 23557	PEG (1) DP 23657	ob9	334°17'30"	A DP 23657	64.77	A DP 23657
PEG (1) DP 23657	PEG (2) DP 23657	ob27	345°02'00"	A DP 23657	23.61	A DP 23657
PEG (2) DP 23657	PEG (3) DP 23657	ob29	291°11'30"	A DP 23657	97.73	A DP 23657
PEG (3) DP 23657	IT VII SO 13553	ob30	246°29'00"	A DP 23657	17.17	A DP 23657
IT II DP 23557	PEG 2 DP 460783	ob10	65°05'20"	C	74.75	C
IT I DP 460783	PEG 1 DP 460783	ob23	61°23'00"	C	67.02	C
IT II DP 23557	IT I DP 460783	ob11	73°03'35"	C	649.75	C
IT VII SO 13553	IT XII SO 6126	ob25	358°57'00"	A SO 13553	234.56	A SO 13553
IT XII SO 6126	IT SO 6126	ob31	0°33'30"	A SO 6126	13.06	A SO 6126
IT SO 6126	PEG (2) DP 23657	ob32	90°34'00"	A DP 827	18.11	A DP 23657
PEG (2) DP 23657	PEG (5) DP 23657	ob33	90°34'00"	A DP 827	19.28	A DP 23657
PEG (4) DP 23657	IT III DP 23657	ob36	324°28'00"	A DP 23657	72.13	A DP 23657
PEG (5) DP 23657	PEG (2) DP 827	ob34	90°34'00"	A DP 827	88.81	A DP 23657
PEG (2) DP 827	PEG (1) DP 827	ob38	165°00'20"	A DP 827	307.71	A DP 827
PEG (1) DP 827	PEG 2 DP 460783	ob40	165°02'00"	A DP 827	28.24	A DP 827
PEG (1) DP 23657	UNMK DP 23657	ob28	104°00'00"	A DP 23657	28.81	A DP 23657

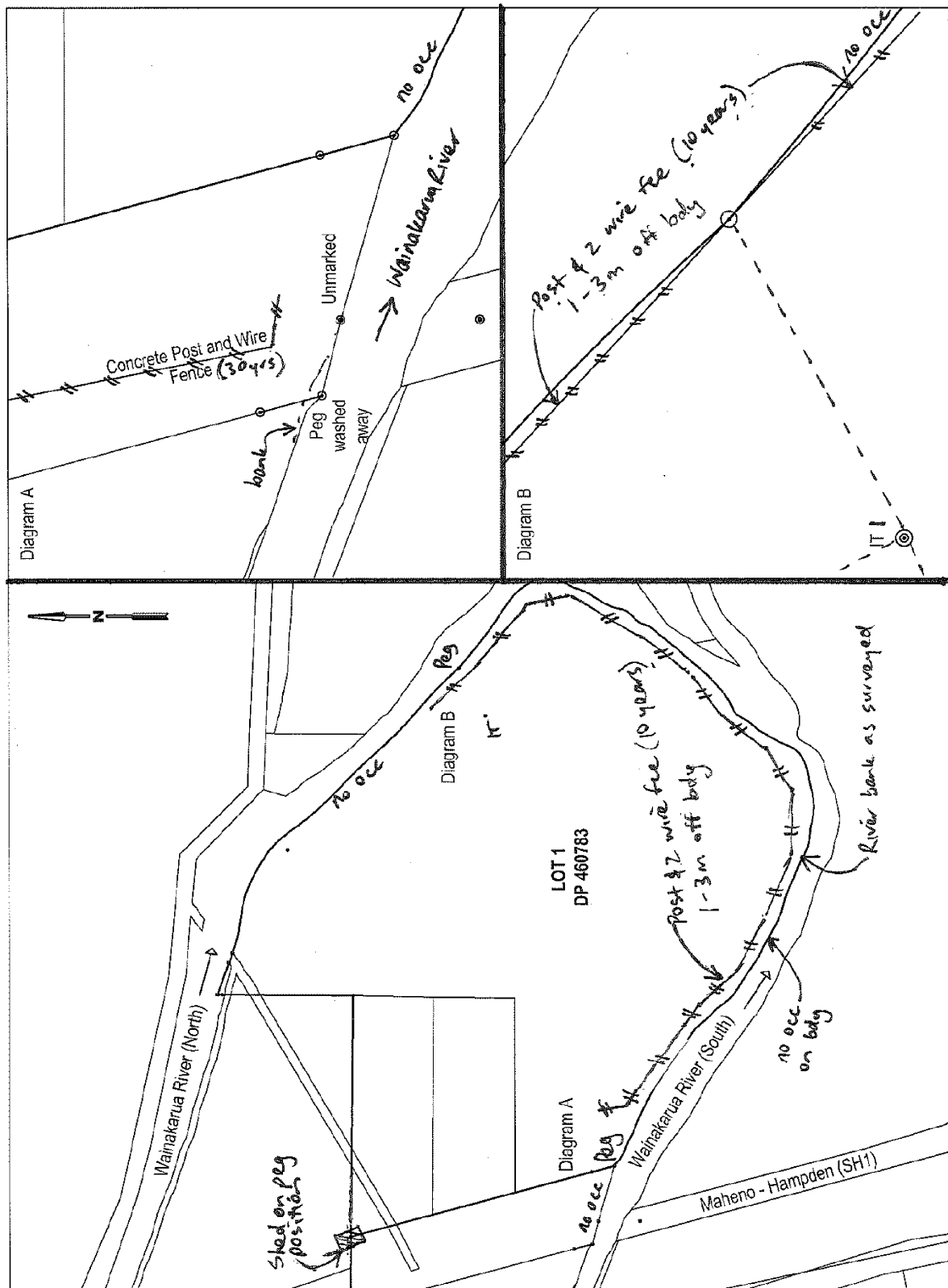
# Mark and Vector

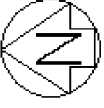
**Survey Number** DP 460783  
**Coordinate System** Observation Point 2000

From	To	Code	Bearing	Adpt Surv	Distance	Adpt Surv
UNMK DP 23657	PEG 2 DP 460783	ob41	106°20'00"	A DP 827	70.81	A DP 827
PEG (2) DP 827	PEG (4) DP 827	ob39	90°34'00"	A DP 827	296.88	A DP 827
PEG (4) DP 827	PEG (5) DP 827	ob42	0°34'00"	A DP 827	160.93	A DP 827
PEG (5) DP 827	PEG (6) DP 827	ob43	114°29'00"	A DP 827	194.75	A DP 827
PEG (6) DP 827	PEG (7) DP 827	ob45	135°22'00"	A DP 827	425.73	A DP 827
PEG (7) DP 827	PEG (8) DP 827	ob46	225°29'00"	A DP 827	223.10	A DP 827
PEG (8) DP 827	PEG (9) DP 827	ob47	287°48'00"	A DP 827	141.42	A DP 827
PEG (9) DP 827	PEG (10) DP 827	ob48	261°45'00"	A DP 827	155.70	A DP 827
PEG (10) DP 827	PEG (11) DP 827	ob49	288°49'00"	A DP 827	213.54	A DP 827
PEG (11) DP 827	PEG (1) DP 827	ob50	263°54'00"	A DP 827	45.16	A DP 827
PEG (5) DP 827	UNMK DP 827	ob44	0°34'00"	A DP 827	5.83	A DP 827
IT III DP 23657	IT II DP 23557	ob37	159°01'00"	A DP 23657	357.01	A DP 23657
PEG (5) DP 23657	PEG (4) DP 23657	ob35	165°02'00"	A DP 23657	85.10	A DP 23657

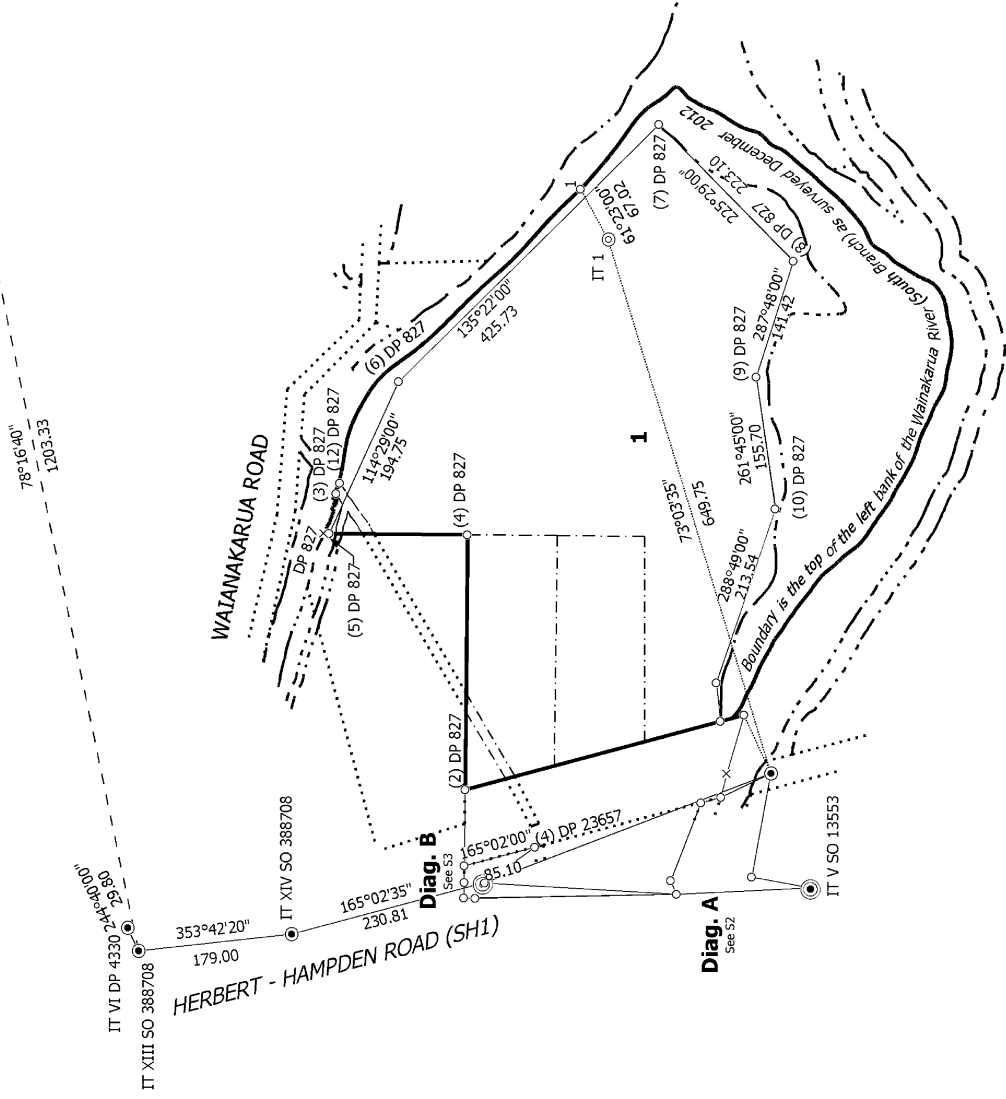
\*\*\* End of Report \*\*\*

# Occupation Diagram





(Otepopo SD)



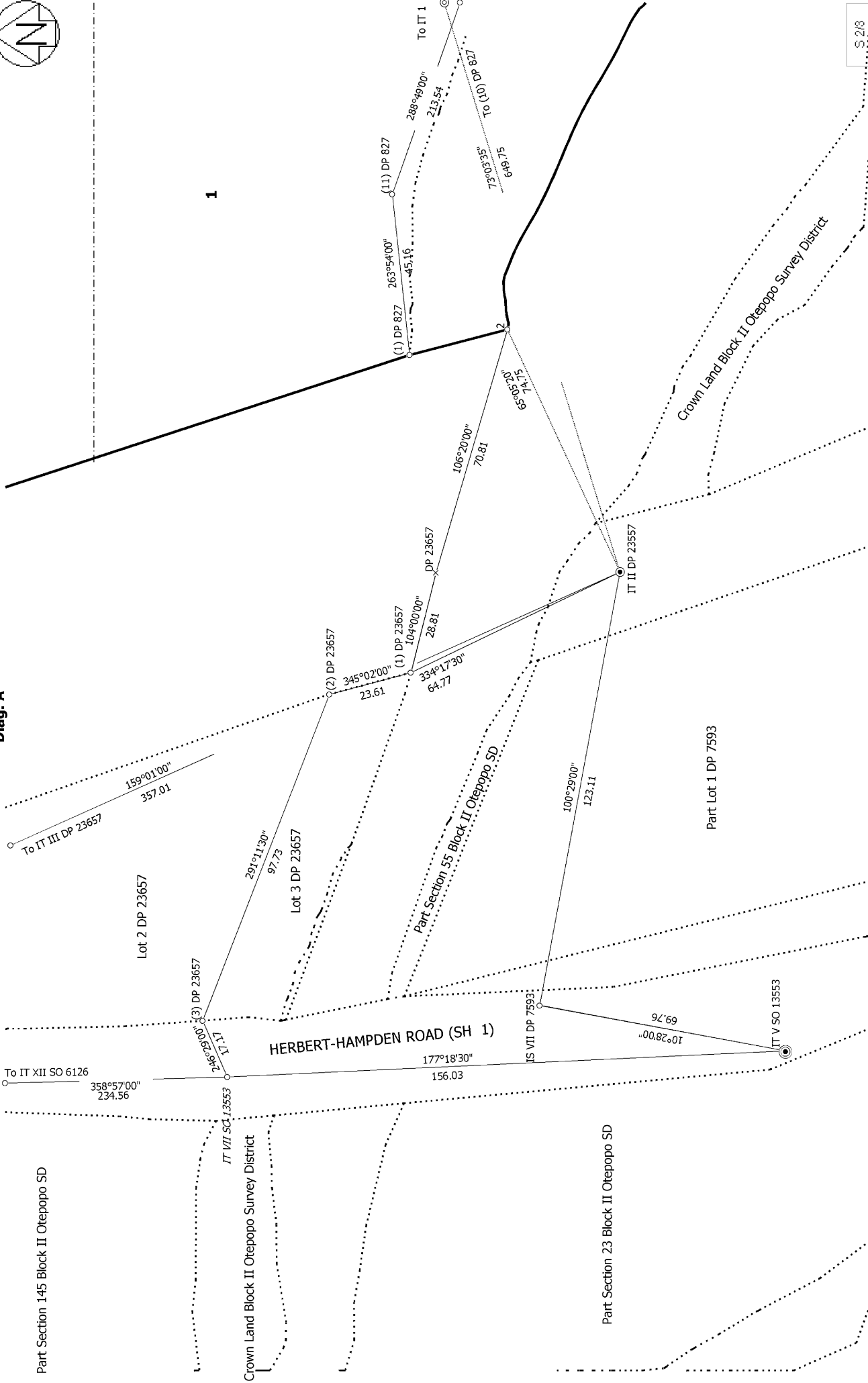
Lot 1 formerly Section 558R, Section 559R and Part Section 14-16 Block II  
 Otepopo Survey District and Accretion

Surveyor: Cameron John Leckie  
 Firm: G M O'Neill Surveying Ltd  
 Survey Date: 11/01/2013

CSD Plan  
 DP 460783  
 Deposited on: 6/10/2014



Diag. A

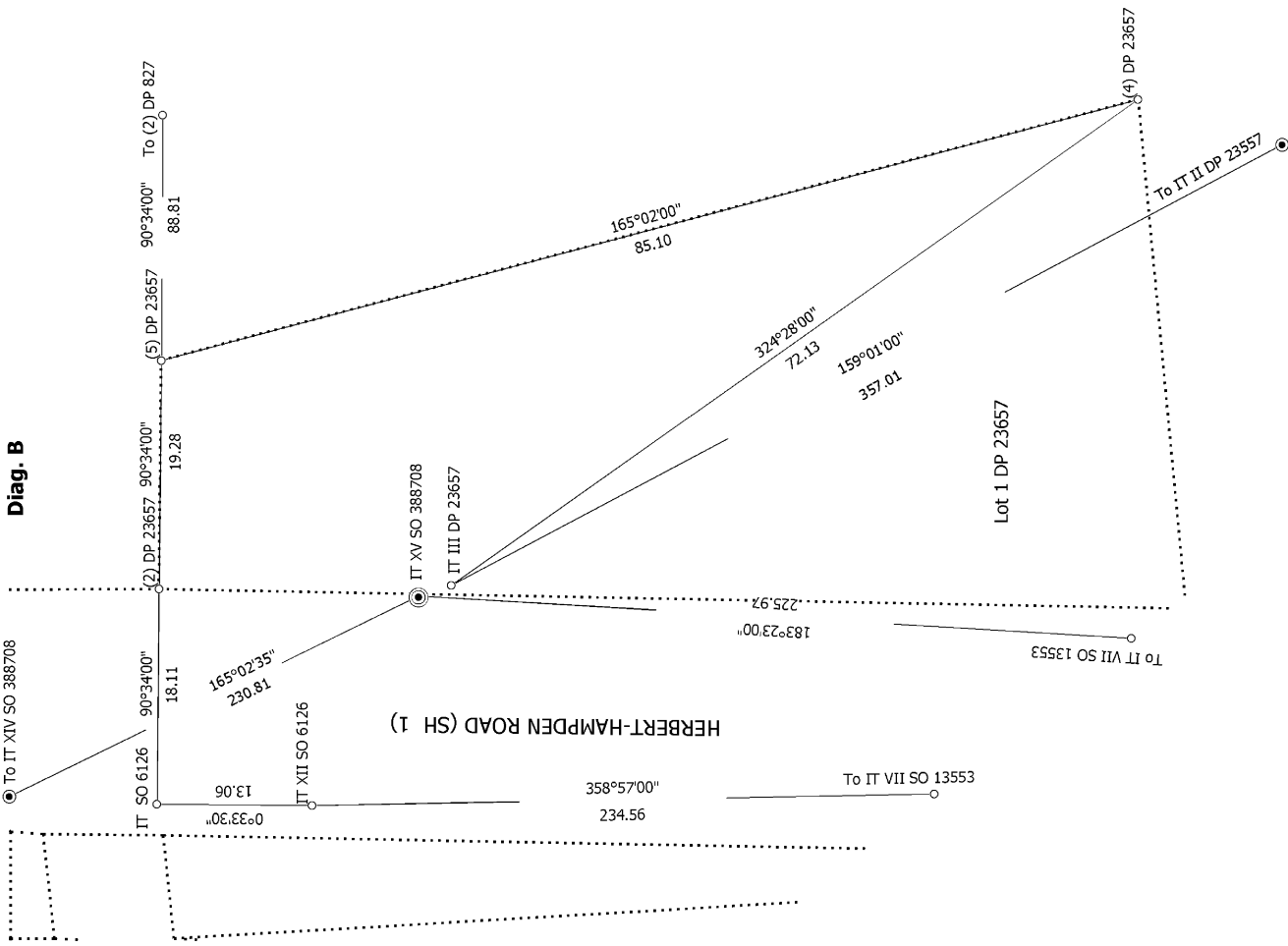


Lot 1 formerly Section 558R, Section 559R and Part Section 14-16 Block II  
 Otepopo Survey District and Accretion

Surveyor: Cameron John Leckie  
 Firm: G M O'Neill Surveying Ltd  
 Survey Date: 11/01/2013



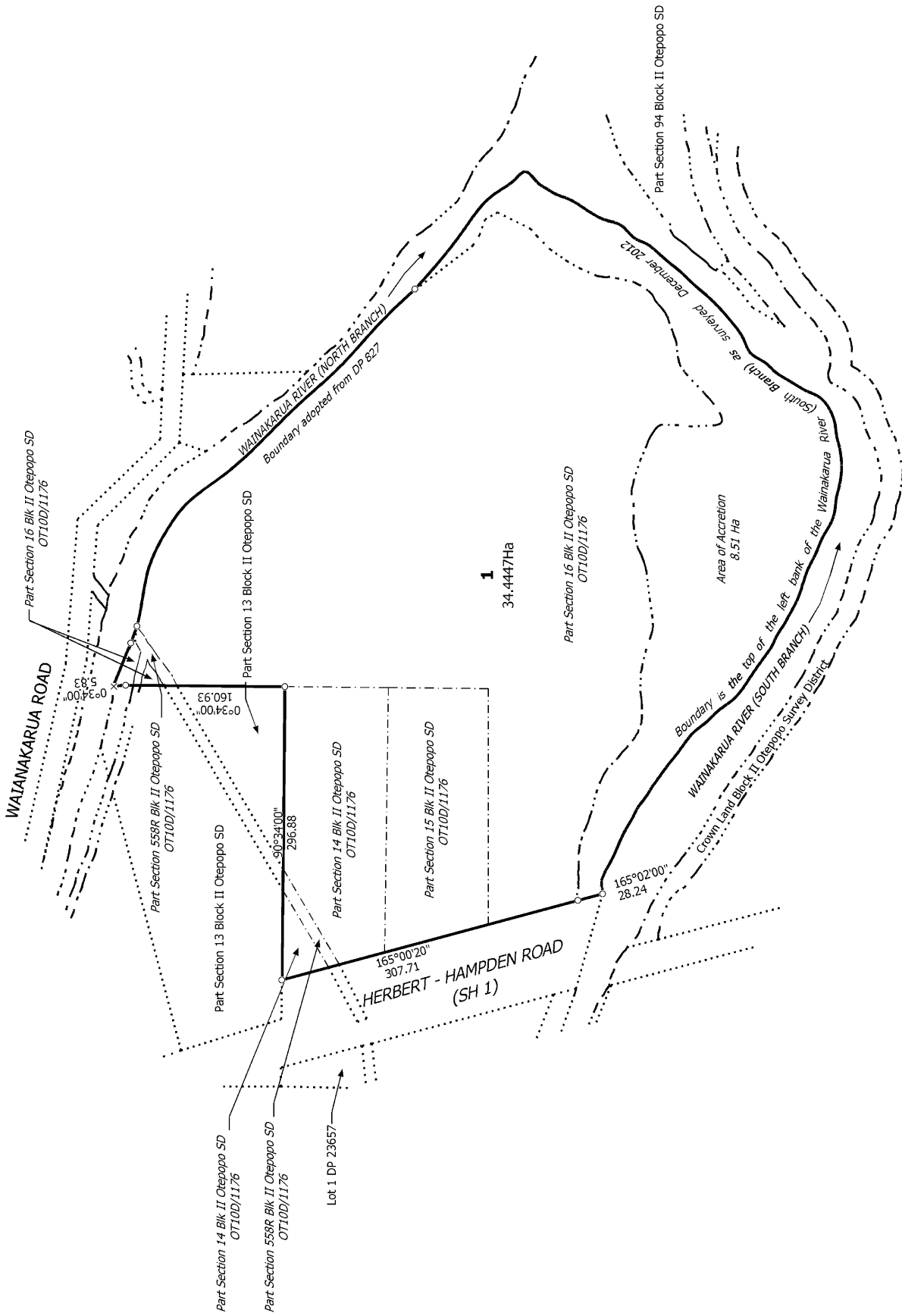
Diag. B



Surveyor: Cameron John Leckie  
 Firm: G M O'Neill Surveying Ltd  
 Survey Date: 11/01/2013

CSD Plan  
 DP 460783  
 Deposited on: 6/10/2014

Lot 1 formerly Section 558R, Section 559R and Part Section 14-16 Block II  
 Orepopo Survey District and Accretion



Part Section 151 Block II Otepopo SD

T 1/1

Lot 1 formerly Section 558R, Section 559R and Part Section 14-16 Block II  
 Otepopo Survey District and Accretion

Surveyor: Cameron John Leckie  
 Firm: G M O'Neill Surveying Ltd  
 Survey Date: 11/01/2013

CSD Plan  
 DP 460783  
 Deposited on: 6/10/2014