



CSD Plan - DP 435017

Survey Number DP 435017
Surveyor Reference 61072 70 ALBRECHT AVENUE
Surveyor William Yat-Wah Cheung
Survey Firm Wood & Partners Consultants Ltd
Surveyor Declaration I William Yat-Wah Cheung, being a licensed cadastral surveyor, certify that:
 (a) this dataset provided by me and its related survey are accurate, correct and in accordance with the Cadastral Survey Act 2002 and the Rules for Cadastral Survey 2010, and
 (b) the survey was undertaken by me or under my personal direction.
 Declared on 04 Sep 2014 02:26 PM

Survey Details

Dataset Description LOTS 1 AND 2 BEING A SUBDIVISION OF LOT 317 DP 44718
Purpose LT Subdivision
Status Deposited **Type** Survey
Land District North Auckland **Survey Class** Class A
Meridional Circuit Mount Eden 2000

Survey Dates

Surveyed Date 17/07/2014 **Certified Date** 04/09/2014
Submitted Date 04/09/2014 14:26:11 **Survey Approval Date** 17/09/2014
Deposit Date 17/12/2014

Referenced Surveys

Survey Number	Land District	Bearing Correction
DP 365605	North Auckland	0°00'00"
SO 54425	North Auckland	0°00'00"
DP 374234	North Auckland	0°00'00"
DP 338727	North Auckland	0°00'00"
DP 210495	North Auckland	0°00'00"
DP 104187	North Auckland	0°00'00"
DP 187073	North Auckland	0°00'00"
DP 42173	North Auckland	0°00'00"
DP 44718	North Auckland	0°00'00"
DP 333943	North Auckland	0°00'00"
DP 390836	North Auckland	0°00'00"
DP 466473	North Auckland	0°00'00"

Territorial Authorities

Auckland

Comprised In

CT NA52B/375



CSD Plan - DP 435017

Created Parcels

Parcels	Parcel Intent	Area	CT Reference
Lot 1 Deposited Plan 435017	Fee Simple Title	0.0349 Ha	531648
Lot 2 Deposited Plan 435017	Fee Simple Title	0.0417 Ha	531649
Area A Deposited Plan 435017	Easement		
Area B Deposited Plan 435017	Easement		
Area C Deposited Plan 435017	Easement		
Total Area		<hr/> 0.0766 Ha	

Mark and Vector

Survey Number DP 435017
Meridional Circuit Mount Eden 2000

From	To	Code	Bearing	Adpt Surv	Distance	Adpt Surv
SM 3786 SO 54425	IS I DP 187073	ob0	289°21'50"	M	52.465	M
IS I DP 187073	ALP 2 DP 435017	ob76	289°21'50"	M	46.17	M
ALP 2 DP 435017	ALP 1 DP 435017	ob46	289°21'50"	M	2.95	M
ALP 1 DP 435017	IT II DP 187073	ob47	289°21'50"	M	5.04	M
IT II DP 187073	RM 3785 SO 54425	ob69	289°21'50"	M	19.14	M
RM 3785 SO 54425	RM 3784 SO 54425	ob3	307°12'45"	M	134.725	M
IS II DP 210495	IS 56 DP 338727	ob7	37°25'20"	M	4.05	M
IT II DP 187073	IT III DP 187073	ob70	169°32'00"	A DP 187073	64.56	A DP 187073
IT III DP 187073	IS I DP 187073	ob77	40°51'00"	A DP 187073	60.19	A DP 187073
RM 3785 SO 54425	IS DP 42173	ob4	4°02'40"	A DP 42173	9.81	A DP 42173
IS DP 42173	IS IX DP 44718	ob9	212°01'28"	A DP 44718	9.20	A DP 44718
IS IX DP 44718	PEG 11 DP 44718	ob10	115°42'30"	A DP 44718	13.76	A DP 44718
PEG 11 DP 44718	DISK 12 DP 435017	ob11	115°42'30"	A DP 44718	14.89	A DP 44718
DISK 12 DP 435017	DISK 30 DP 435017	ob12	115°42'30"	A DP 44718	3.00	C
DISK 30 DP 435017	DISK 13 DP 435017	ob30	115°42'30"	A DP 44718	16.44	C
DISK 13 DP 435017	PEG 14 DP 435017	ob14	115°42'30"	A DP 44718	0.68	A DP 44718
PEG 14 DP 435017	PEG 15 DP 44718	ob15	115°42'30"	A DP 187073	3.66	A DP 187073
PEG 15 DP 44718	PEG 16 DP 44718	ob16	115°42'30"	A DP 44718	20.12	A DP 44718
PEG 16 DP 44718	PEG 17 DP 44718	ob17	115°42'30"	A DP 44718	20.12	A DP 44718
PEG 17 DP 44718	PEG 18 DP 44718	ob18	115°42'30"	A DP 44718	16.46	A DP 44718
PEG 18 DP 44718	IS 19 DP 44718	ob19	115°42'30"	A DP 44718	15.24	A DP 44718
IS 19 DP 44718	IS VIII DP 44718	ob20	25°43'00"	A DP 44718	9.15	A DP 44718
IS VIII DP 44718	SM 3786 SO 54425	ob21	73°35'40"	A DP 104187	7.12	A DP 104187
PEG 21 DP 187073	PEG 22 DP 44718	ob22	25°42'30"	A DP 187073	1.50	A DP 187073
PEG 22 DP 44718	PEG 25 DP 435017	ob23	295°42'30"	A DP 44718	3.66	A DP 44718
PEG 25 DP 435017	UNMK 31 DP 435017	ob24	25°42'30"	A DP 187073	11.23	C
UNMK 31 DP 435017	DISK 32 DP 435017	ob32	25°42'30"	A DP 187073	9.50	C
DISK 32 DP 435017	PEG 14 DP 435017	ob33	25°42'30"	A DP 187073	17.37	C
PEG 25 DP 435017	PEG 42 DP 435017	ob25	295°42'30"	A DP 44718	2.38	A DP 44718
PEG 42 DP 435017	PEG 26 DP 435017	ob79	295°42'30"	A DP 44718	11.40	A DP 44718
PEG 26 DP 435017	PEG 27 DP 435017	ob26	295°42'30"	A DP 44718	6.34	A DP 44718
PEG 27 DP 435017	PEG 28 DP 44718	ob27	295°42'30"	A DP 44718	25.19	A DP 44718
PEG 28 DP 44718	PEG 29 DP 44718	ob28	32°01'20"	A DP 44718	32.24	A DP 44718
PEG 29 DP 44718	PEG 11 DP 44718	ob29	73°51'40"	A DP 44718	9.08	A DP 44718
DISK 12 DP 435017	DISK 40 DP 435017	ob13	205°42'30"	A DP 44718	5.00	M
DISK 40 DP 435017	PEG 27 DP 435017	ob44	205°42'30"	A DP 44718	33.10	A DP 44718
DISK 40 DP 435017	DISK 41 DP 435017	ob45	115°42'30"	C	3.00	C
DISK 41 DP 435017	DISK 33 DP 435017	ob41	205°42'30"	C	6.21	C
DISK 33 DP 435017	DISK 34 DP 435017	ob34	295°42'30"	C	0.75	C
DISK 34 DP 435017	DISK 35 DP 435017	ob36	205°42'30"	C	3.45	C
DISK 35 DP 435017	DISK 36 DP 435017	ob37	115°42'30"	C	0.75	C
DISK 36 DP 435017	DISK 37 DP 435017	ob38	205°42'30"	C	4.98	C

Mark and Vector

Survey Number DP 435017

Meridional Circuit Mount Eden 2000

From	To	Code	Bearing	Adpt Surv	Distance	Adpt Surv
DISK 37 DP 435017	DISK 38 DP 435017	ob39	156°29'00"	C	2.49	C
DISK 38 DP 435017	UNMK 39 DP 435017	ob40	101°22'00"	C	4.15	C
UNMK 39 DP 435017	DISK 32 DP 435017	ob42	101°22'00"	C	11.58	C
DISK 33 DP 435017	DISK 36 DP 435017	ob35	205°42'30"	C	3.45	C
DISK 30 DP 435017	DISK 41 DP 435017	ob31	205°42'30"	C	5.00	C
ALP 1 DP 435017	ALP 3 DP 435017	ob48	199°14'00"	M	25.72	M
ALP 3 DP 435017	ALP 2 DP 435017	ob60	25°46'30"	M	25.88	M
UNMK 39 DP 435017	UNMK 49 DP 435017	ob43	191°22'00"	C	1.00	C
UNMK 49 DP 435017	UNMK 50 DP 435017	ob71	101°22'00"	C	2.74	C
UNMK 50 DP 435017	UNMK 51 DP 435017	ob72	196°56'00"	C	3.52	C
UNMK 51 DP 435017	UNMK 52 DP 435017	ob73	106°56'00"	C	4.36	C
UNMK 52 DP 435017	UNMK 53 DP 435017	ob74	205°55'00"	C	3.52	C
UNMK 53 DP 435017	UNMK 31 DP 435017	ob75	115°42'30"	C	3.50	C
ALP 1 DP 435017	DISK 12 DP 435017	ob49	206°12'00"	M	2.70	M
ALP 1 DP 435017	DISK 30 DP 435017	ob50	157°55'00"	M	4.02	M
ALP 1 DP 435017	DISK 33 DP 435017	ob51	193°38'00"	M	14.23	M
ALP 3 DP 435017	DISK 34 DP 435017	ob52	22°23'00"	M	11.66	M
ALP 1 DP 435017	DISK 36 DP 435017	ob53	195°59'00"	M	17.61	M
ALP 3 DP 435017	DISK 35 DP 435017	ob54	20°59'00"	M	8.22	M
ALP 1 DP 435017	DISK 13 DP 435017	ob55	123°37'00"	M	19.60	M
ALP 1 DP 435017	PEG 14 DP 435017	ob56	123°22'00"	M	20.27	M
ALP 3 DP 435017	DISK 38 DP 435017	ob61	76°40'00"	M	2.52	M
ALP 3 DP 435017	DISK 32 DP 435017	ob62	98°02'00"	M	18.05	M
ALP 3 DP 435017	PEG 27 DP 435017	ob63	216°35'00"	M	15.53	M
IS 56 DP 338727	RM 3785 SO 54425	ob80	37°25'20"	M	97.81	M
RM 3785 SO 54425	ALP 1 DP 374234	ob5	219°39'00"	M	63.16	M
ALP 1 DP 374234	IS 56 DP 338727	ob81	213°22'00"	A DP 374234	34.79	A DP 374234
ALP 1 DP 435017	DISK 40 DP 435017	ob57	205°53'00"	M	7.70	M
ALP 1 DP 435017	DISK 41 DP 435017	ob58	184°35'00"	M	8.26	M
RM 3785 SO 54425	IS X DP 44718	ob6	218°45'00"	M	39.14	M
IS X DP 44718	PEG 28 DP 44718	ob82	115°42'30"	A DP 44718	7.67	A DP 44718
IS II DP 210495	IS XI DP 44718	ob8	51°54'00"	A DP 333943	14.63	A DP 333943
IS XI DP 44718	RM 3785 SO 54425	ob83	35°01'20"	M	87.77	M
IT III DP 187073	DISK 60 DP 187073	ob78	272°57'00"	A DP 187073	6.60	A DP 187073
DISK 60 DP 187073	DISK 61 DP 187073	ob84	346°30'00"	A DP 187073	2.06	A DP 187073
DISK 61 DP 187073	DISK 62 DP 187073	ob85	25°43'00"	A DP 187073	6.82	A DP 187073
DISK 62 DP 187073	PEG 21 DP 187073	ob86	2°06'00"	A DP 187073	4.91	A DP 187073
ALP 3 DP 435017	DISK 60 DP 187073	ob65	166°39'00"	M	38.23	M
ALP 3 DP 435017	DISK 37 DP 435017	ob64	26°59'00"	M	3.21	M
SM 3786 SO 54425	RM 3791 SO 54425	ob1	206°22'50"	M	139.615	M
SM 3786 SO 54425	RM 3787 SO 54425	ob2	116°47'40"	M	107.895	M
ALP 3 DP 435017	PEG 26 DP 435017	ob66	193°06'00"	M	15.63	M
ALP 3 DP 435017	PEG 42 DP 435017	ob67	161°33'00"	M	21.26	M

Mark and Vector

Survey Number DP 435017
Meridional Circuit Mount Eden 2000

From	To	Code	Bearing	Adpt Surv	Distance	Adpt Surv
ALP 3 DP 435017	PEG 25 DP 435017	ob68	157°17'00" M		22.98 M	

Mark Name	Description
ALP 1 DP 374234	Aluminium Plug in kerb/driveway (5 Drew St)
ALP 1 DP 435017	Aluminium Plug in seal at top of driveway
ALP 2 DP 435017	Aluminium Plug in seal at Top of Driveway
ALP 3 DP 435017	Aluminium Plug in seal
DISK 12 DP 435017	Aluminium Disk in seal
DISK 13 DP 435017	Aluminium Disk in seal
DISK 30 DP 435017	Aluminium Disk in seal
DISK 32 DP 435017	Disk in top of concrete wall
DISK 33 DP 435017	Disk in seal in Driveway
DISK 34 DP 435017	Disk in seal in Driveway
DISK 35 DP 435017	Disk in seal in Driveway
DISK 36 DP 435017	Disk in seal in Driveway
DISK 37 DP 435017	Disk in seal in Driveway
DISK 38 DP 435017	Disk in seal in Driveway
DISK 40 DP 435017	Aluminium Disk in seal in driveway
DISK 41 DP 435017	Disk in seal in Driveway
DISK 60 DP 187073	Aluminium Disk in edge of Seal
IS 56 DP 338727	Iron Spike in Seal
IS DP 42173	N/A
IS I DP 187073	in seal
IS II DP 210495	Iron spike in seal
IS X DP 44718	Iron Spike under seal in centre of road (5cm down)
IS XI DP 44718	Iron Spike under seal in centre of road (5cm down)
IT II DP 187073	Iron Tube in edge of grass/driveway
PEG 14 DP 435017	Peg in ground between end of fence and powerbox
PEG 21 DP 187073	PEG UNDER FENCE
PEG 25 DP 435017	Peg in ground 0.1m south of concrete wall
PEG 26 DP 435017	Peg in ground between fence and retaining wall
PEG 27 DP 435017	Peg in ground on top of retaining wall
PEG 42 DP 435017	Peg in ground, north of concrete post between fence and retaining wall
RM 3784 SO 54425	RM in Channel
RM 3785 SO 54425	RM in channel
RM 3787 SO 54425	RM in Channel

Mark and Vector

Survey Number DP 435017
Meridional Circuit Mount Eden 2000

Mark Name	Description
RM 3791 SO 54425	RM in Channel
SM 3786 SO 54425	SM in Box in Footpath

***** End of Report *****

LOTS 1 AND LOT 2 BEING SUBDIVISION OF LOT DP 44718	
LAND REGISTRATION DISTRICT	NORTH AUCKLAND
PLAN NUMBER	DP 435017
TERRITORIAL AUTHORITY	AUCKLAND COUNCIL
TERRITORIAL AUTHORITY REF	R/SUB/2013/4113
DATE	23 JULY 2014
OUR REF	61072 – 70 ALBRECHT AVENUE

MEMORANDUM OF EASEMENTS			
PURPOSE	SHOWN AS	SERVIENT TENEMENT	DOMINANT TENEMENT
RIGHT OF WAY	AREA B & C HEREON	LOT 1 HEREON	LOT 2 HEREON
RIGHT TO DRAIN WATER AND SEWAGE	AREA A HEREON	LOT 2 HEREON	LOT 1 HEREON

***NOTES:**

UPPER AND LOWER HEIGHT LIMITS FOR THE NEW EASEMENT 'AREA B' HEREON ARE AS FOLLOWS:

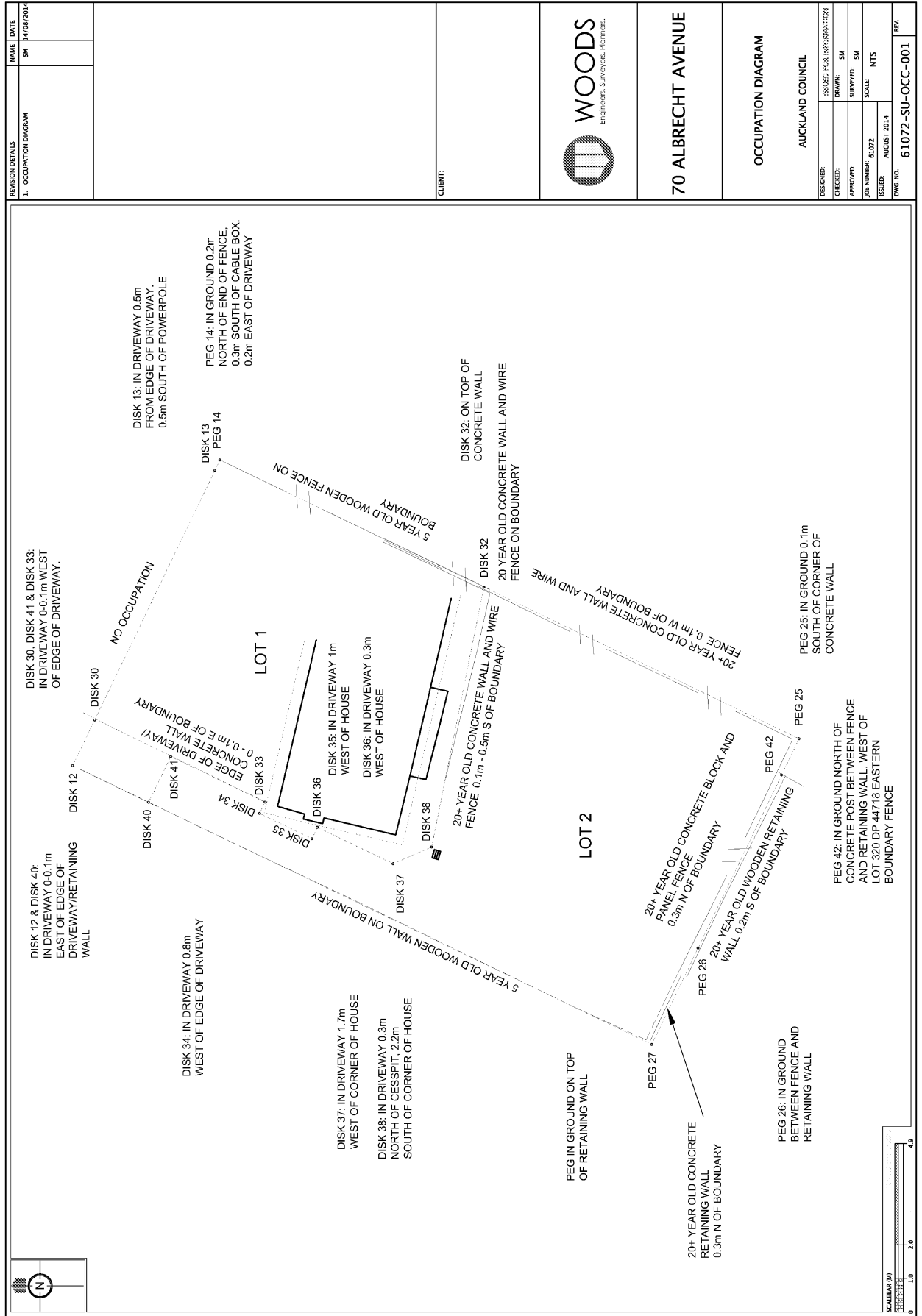
UPPER LIMIT: RL = 74.75m

LOWER LIMIT: RL = 71.70m

LEVELS ARE IN TERMS OF THE AUCKLAND VERTICAL DATUM 1946.

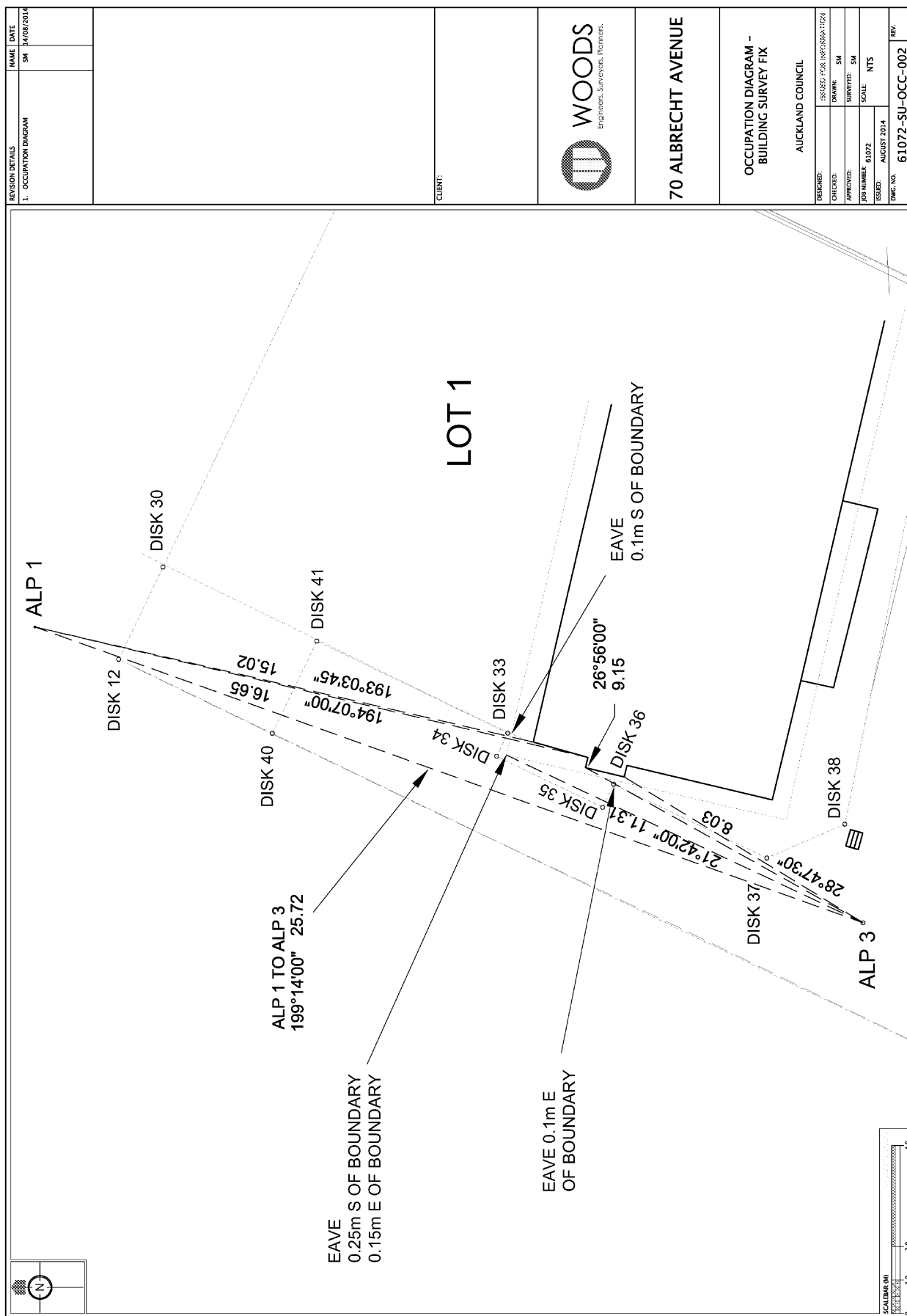
ORIGIN - RM 3785 SO 54425, RL = 77.580m

Occupation Diagram

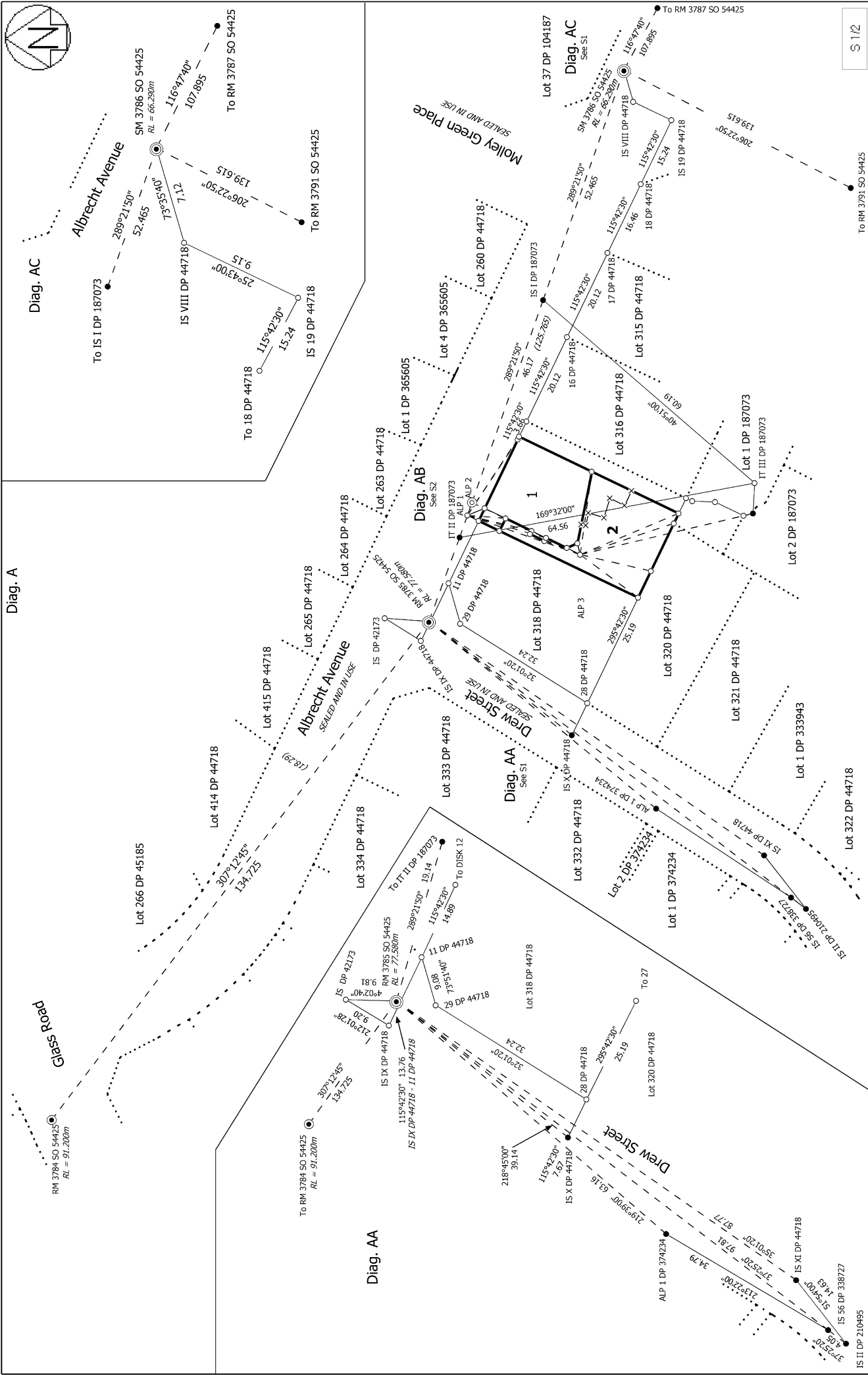


Z:\61072 70 Albrecht Avenue\Project Documents and Correspondence\7 Surveying - SU\Land Transfer Doc\Occupation Diagram.dwg, 21/08/2014 12:38:30 p.m. DWG To PDF.pc3

Occupation Diagram



Z:\61072 70 Albrecht Avenue\Project Documents and Correspondence\7 Surveying - SU\Land Transfer Doc\Occupation Diagram.dwg, 21/08/2014 12:38:34 p.m. DWG To PDF.pc3



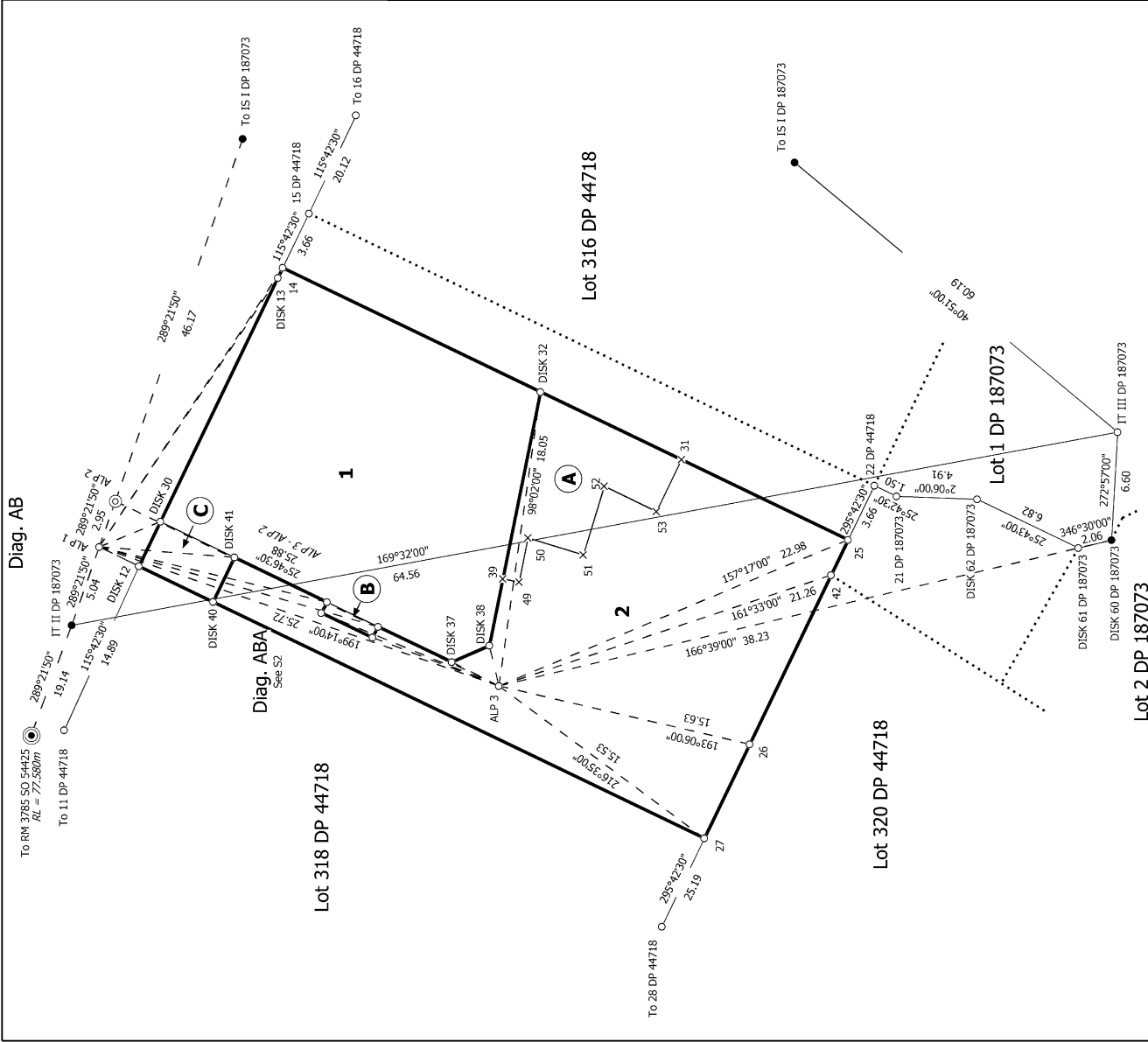
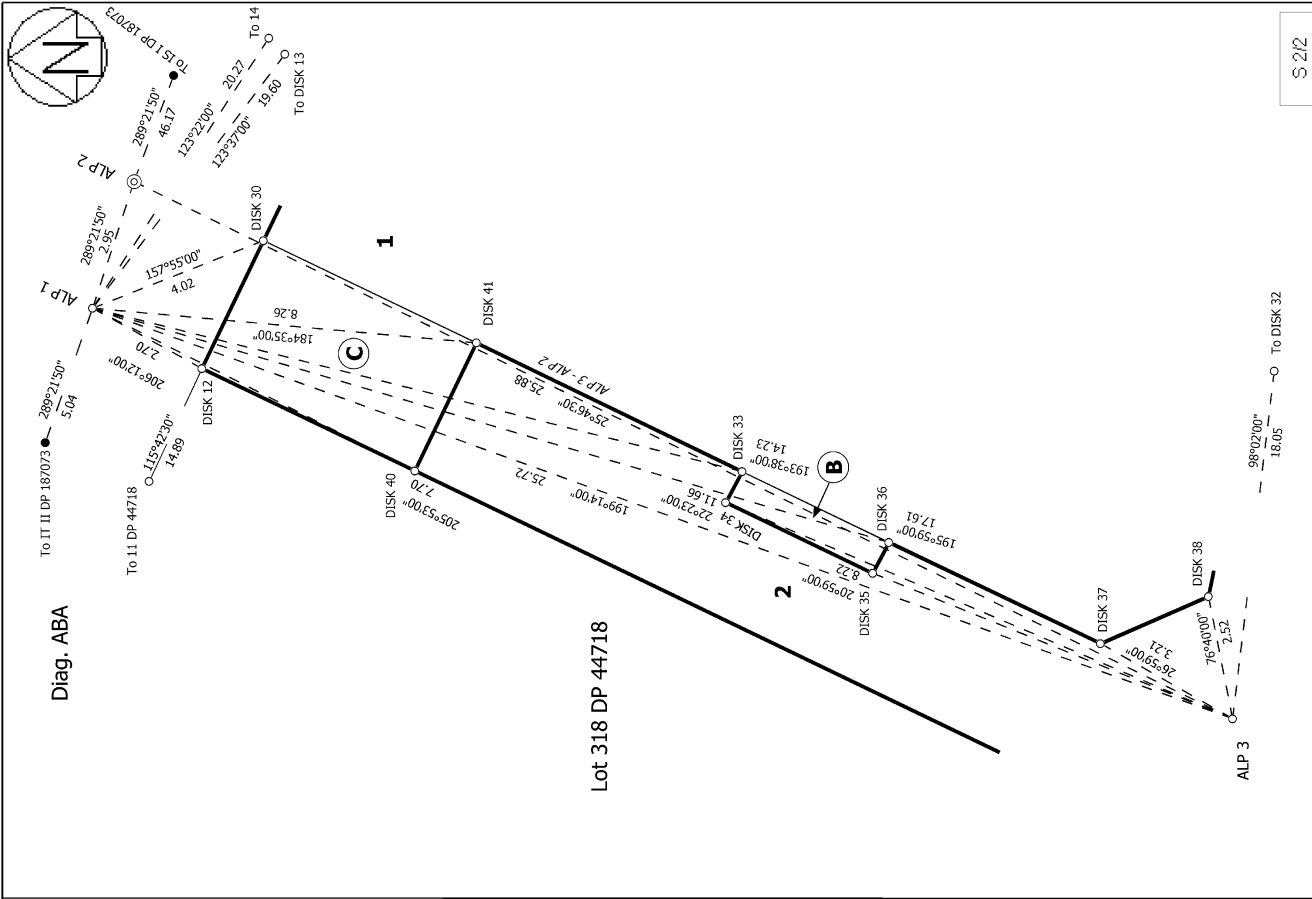
\$ 1/2

Land District: North Auckland
 Digitally Generated Plan
 Generated on: 22/01/2015 06:57 am Page 10 of 13

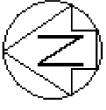
Surveyor: William Yat-Wah Cheung
 Firm: Wood & Partners Consultants Ltd
 Survey Date: 17/07/2014

LOTS 1 AND 2 BEING A SUBDIVISION OF LOT 317 DP 44718

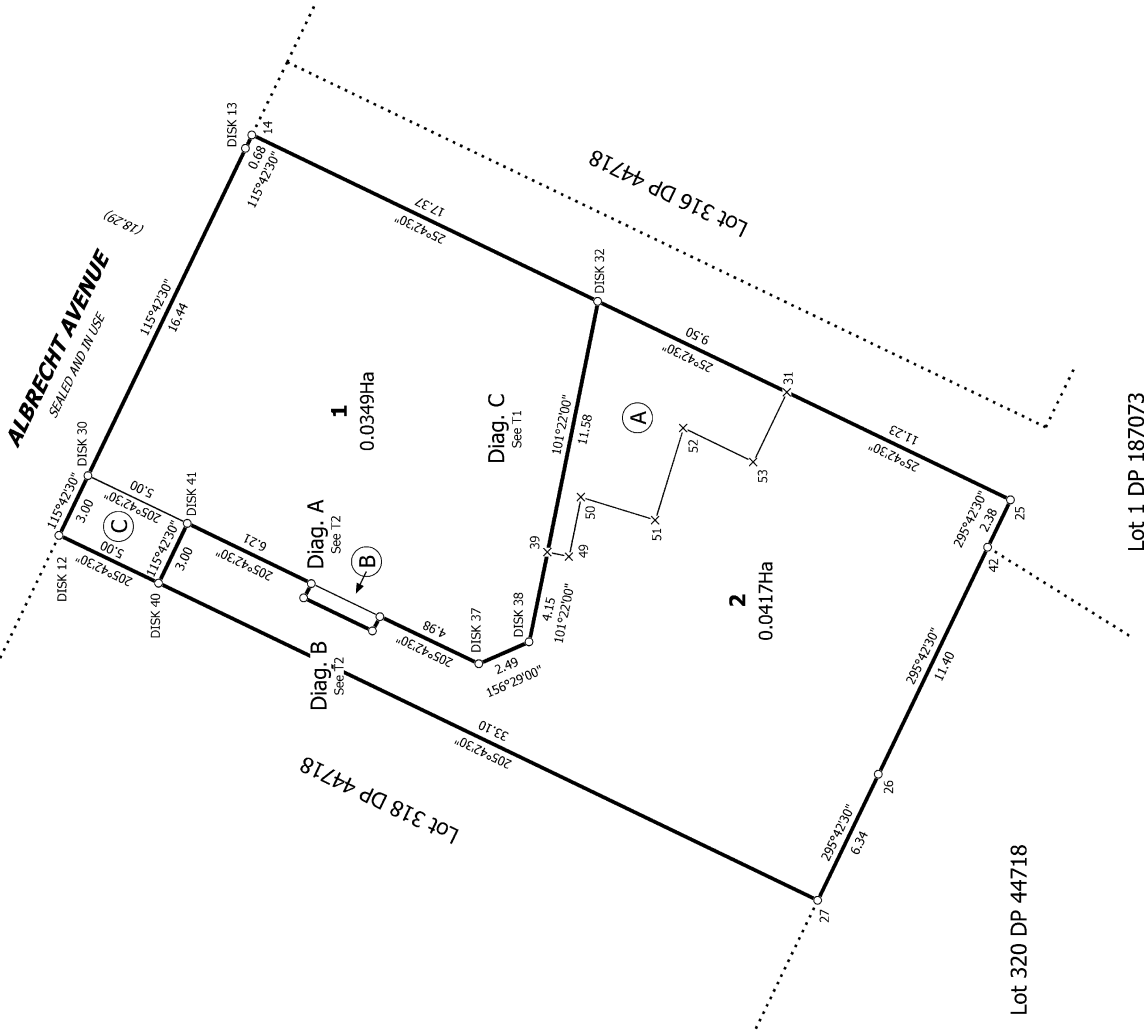
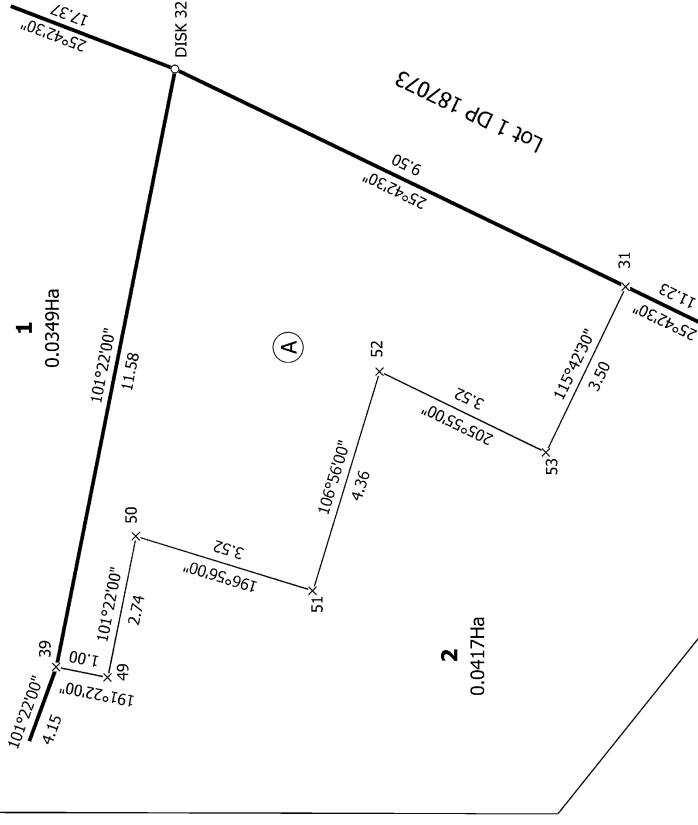
Deposited on: 17/12/2014
CSD Plan DP 435017



S 212	Surveyor: William Yat-Wah Cheung Firm: Wood & Partners Consultants Ltd Survey Date: 17/07/2014	CSD Plan DP 435017	Deposited on: 17/12/2014
LOTS 1 AND 2 BEING A SUBDIVISION OF LOT 317 DP 44718			
Land District: North Auckland Digitally Generated Plan Generated on: 22/01/2015 08:57:am Page 11 of 13	Lot 1 DP 187073 Lot 2 DP 187073		



Diag. C



Lot 1 DP 187073

Lot 320 DP 44718

T 1/2

LOTS 1 AND 2 BEING A SUBDIVISION OF LOT 317 DP 44718

Land District: North Auckland

Digitally Generated Plan

Generated on: 22/01/2015 06:57:am Page 12 of 13

Surveyor: William Yat-Wah Cheung
Firm: Wood & Partners Consultants Ltd
Survey Date: 17/07/2014

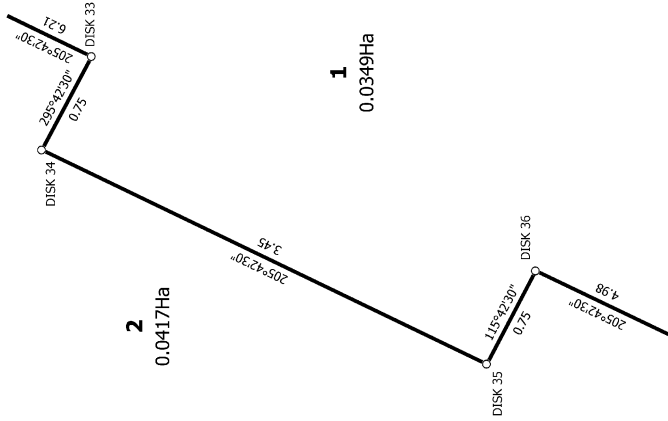
CSD Plan
DP 435017

Deposited on: 17/12/2014



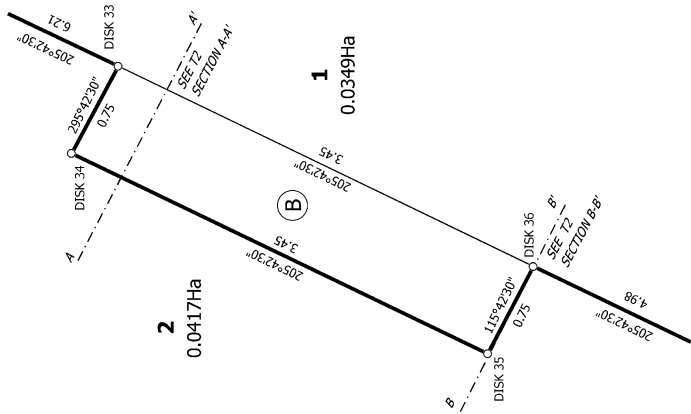
Diag. B

RL = 74.76 & ABOVE
AND
RL = 71.69 & BELOW



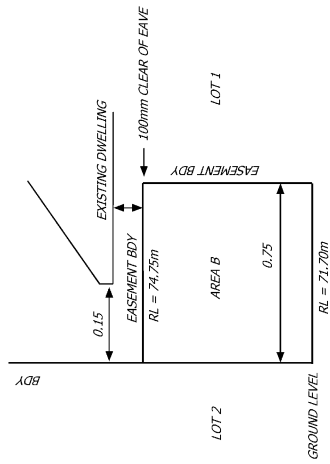
Diag. A

FROM RL 71.70 TO 74.75



CROSS SECTION A-A'
(EAVE CLOSEST TO BOUNDARY)

LEVELS ARE IN TERMS OF THE AUCKLAND VERTICAL DATUM 1946
ORIGIN ~ RM 3785 SO 54425, RL = 77.580m

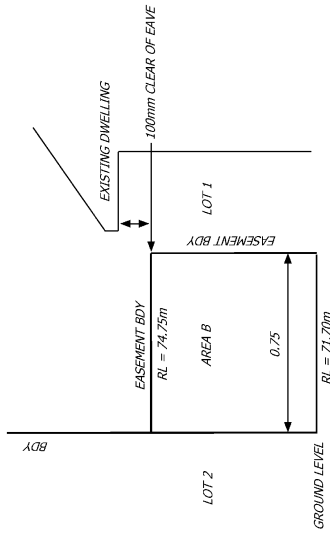


DIAG. NOT TO SCALE

Land District: North Auckland
Digitally Generated Plan
Generated on: 22/01/2015 08:57:am | Page 13 of 13

CROSS SECTION B-B'

LEVELS ARE IN TERMS OF THE AUCKLAND VERTICAL DATUM 1946
ORIGIN ~ RM 3785 SO 54425, RL = 77.580m



DIAG. NOT TO SCALE

LOTS 1 AND 2 BEING A SUBDIVISION OF LOT 317 DP 44718

Surveyor: William Yat-Wah Cheung
Firm: Wood & Partners Consultants Ltd
Survey Date: 17/07/2014

CSD Plan
DP 435017

Deposited on: 17/12/2014

T 2/2