



CSD Plan - SO 550634

Survey Number SO 550634
Surveyor Reference 4718C Hanmer School Legalisation
Surveyor Alexander David John Liggett
Survey Firm Fox and Associates
Surveyor Declaration I Alexander David John Liggett, being a licensed cadastral surveyor, certify that:
(a) this dataset provided by me and its related survey are accurate, correct and in accordance with the Cadastral Survey Act 2002 and the Rules for Cadastral Survey 2010, and
(b) the survey was undertaken by me or under my personal direction.
Declared on 06 Aug 2020 08:27 AM

Survey Details

Dataset Description	Sections 1 & 2	Type	Survey
Purpose	Legalisation	Survey Class	Class A
Status	Approved as to Survey	Vertical Datum	None
Land District	Canterbury		
Meridional Circuit	Amuri 2000		

Survey Dates

Surveyed Date	28/07/2020	Certified Date	06/08/2020
Submitted Date	06/08/2020 08:27:29	Survey Approval Date	26/08/2020
Deposit Date			

Referenced Surveys

Survey Number	Land District	Bearing Correction
SO 13520	Canterbury	0°00'00"
SO 7100	Canterbury	0°00'40"
SO 7200	Canterbury	0°00'40"
SO 7588	Canterbury	0°00'00"
DP 42679	Canterbury	0°00'40"
SO 8760	Canterbury	0°00'00"
SO 9529	Canterbury	0°00'00"
DP 81596	Canterbury	0°00'00"
DP 83412	Canterbury	0°00'00"
DP 420923	Canterbury	0°00'00"
SO 9485	Canterbury	0°00'00"
DP 27762	Canterbury	0°00'00"
SO 16142	Canterbury	0°00'00"
DP 372826	Canterbury	0°00'00"

Territorial Authorities

Hurunui District

Comprised In

RT 700553



CSD Plan - SO 550634

Created Parcels

Parcels	Parcel Intent	Area	RT Reference
Section 1 Survey Office Plan 550634	Legalisation	0.0081 Ha	
Section 2 Survey Office Plan 550634	Legalisation	1.5110 Ha	
Total Area		<u>1.5191 Ha</u>	

Mark and Vector

Survey Number SO 550634

Meridional Circuit Amuri 2000

From	To	Code	Bearing	Adpt Surv	Bearing Correction	Distance	Adpt Surv	Class
IS II DP 27762	IT 2 DP 372826	ob24	234°06'40" M			35.24 M		
IT 2 DP 372826	IT 1 DP 372826	ob25	234°06'40" M			2.95 M		
IT 1 DP 372826	IT I DP 42679	ob26	234°06'40" M			15.73 M		
IT I DP 42679	IT II DP 42679	ob27	234°06'40" M			15.69 M		
IT II DP 42679	IS SO 7100	ob29	234°06'40" M			41.01 M		
IS SO 7100	RN 1 SO 550634	ob30	266°58'00" M			9.92 M		
RN 1 SO 550634	IT VII SO 16142	ob33	55°18'30" M			257.08 M		
IT VII SO 16142	IS II DP 27762	ob38	234°06'40" M			138.08 M		
RN 1 SO 550634	IT 2 DP 372826	ob34	57°47'00" M			83.88 M		
RN 1 SO 550634	IT 3 SO 550634	ob35	133°27'00" M			97.16 M		
IT 3 SO 550634	IT VII SO 16142	ob39	33°27'30" M			255.47 M		
RN 1 SO 550634	IT 2 SO 550634	ob36	135°49'30" M			61.87 M		
IT 2 SO 550634	IT 3 SO 550634	ob41	129°19'00" M			35.44 M		
RN 1 SO 550634	PEG 1 SO 550634	ob37	95°03'00" M			23.57 M		
IT 2 SO 550634	PEG IX SO 7100	ob42	146°46'00" M			13.04 M		
IT 2 SO 550634	DISC 4 SO 550634	ob43	103°50'00" M			13.73 M		
IT 2 SO 550634	PEG 3 SO 550634	ob44	12°15'00" M			11.89 M		
IT 2 SO 550634	PEG 2 SO 550634	ob45	358°13'00" M			15.80 M		
IT 3 SO 550634	DISC 5 SO 550634	ob40	17°21'00" M			14.67 M		
IS SO 7100	IT SO 19242	ob31	234°06'40" M	A DP 81596		40.86 A DP 42679		
IT SO 19242	IS SO 7200	ob53	226°53'40" A	SO 7200	0°00'40"	107.37 A SO 7200		
IS SO 7200	IT NO REC SO 8760	ob0	191°14'00" A	SO 9529		64.10 A SO 9529		
IT NO REC SO 8760	IS III SO 7200	ob1	101°14'00" A	SO 9529		74.00 A SO 9529		
IS III SO 7200	IS IV SO 7200	ob2	101°14'00" A	SO 9529		86.16 A SO 7200		
IS IV SO 7200	IS II SO 8760	ob19	101°14'00" A	SO 9529		10.83 C		
IS II SO 8760	BLK II SO 19242	ob22	287°27'20" A	DP 420923		190.49 A DP 420923		
BLK II SO 19242	IT SO 19242	ob23	43°01'30" A	DP 83412		153.67 A DP 83412		
IS SO 7100	PEG IX SO 7100	ob32	144°06'40" A	SO 7200	0°00'40"	68.90 A SO 7200		
PEG IX SO 7100	PEG VIII SO 7100	ob46	92°54'40" A	SO 7200	0°00'40"	34.53 A SO 7200		
PEG VIII SO 7100	IS IV SO 7200	ob11	197°18'50" A	SO 7200	0°00'40"	140.16 A SO 7200		
IS III SO 7200	PEG SO 7200	ob3	359°35'40" A	SO 7200	0°00'40"	17.83 A SO 7200		
IT SO 19242	PEG SO 7200	ob54	140°30'40" A	SO 7200	0°00'40"	10.08 A SO 7200		
PEG VIII SO 7100	PEG SO 13520	ob12	322°20'10" A	SO 7100	0°00'40"	7.70 A SO 7100		

Mark and Vector

Survey Number SO 550634

Meridional Circuit Amuri 2000

From	To	Code	Bearing	Adpt Surv	Bearing Correction	Distance	Adpt Surv	Class
IT I DP 42679	PEG NO RECORD DP 42679	ob28	215°35'40"	A DP 42679	0°00'40"	31.68 A	DP 42679	
PEG SO 7200	PEG VI SO 9529	ob4	11°14'20"	A SO 9529		30.18 A	SO 7200	Class A
PEG VI SO 9529	PEG V SO 9529	ob5	11°14'20"	A SO 9529		20.70 A	SO 9529	Class A
PEG V SO 9529	PEG IV SO 9529	ob6	101°14'00"	A SO 9529		10.46 A	SO 9529	Class A
PEG IV SO 9529	PEG III SO 9529	ob8	11°14'20"	A SO 9529		33.30 A	SO 9529	Class A
PEG III SO 9529	PEG SO 7200	ob9	316°54'30"	A SO 9529		33.75 A	SO 9529	Class A
PEG SO 7200	PEG SO 7200	ob10	46°53'40"	A SO 7200	0°00'40"	29.09 A	SO 7200	Class A
PEG SO 7200	PEG 1 SO 550634	ob7	54°06'40"	A SO 7200	0°00'40"	49.70 C		Class A
PEG 1 SO 550634	PEG XII SO 7100	ob47	54°06'40"	A SO 7200	0°00'40"	0.59 C		Class A
PEG XII SO 7100	PEG NO RECORD DP 42679	ob13	54°06'40"	A SO 7100	0°00'40"	16.60 A	SO 7100	
PEG XII SO 7100	PEG XVI SO 7100	ob14	144°06'40"	A SO 7200		54.89 A	SO 7200	Class A
PEG XVI SO 7100	PEG SO 13520	ob15	101°14'40"	A SO 7200	0°00'40"	24.40 A	SO 7100	Class A
PEG SO 13520	PEG SO 13520	ob20	101°14'40"	A SO 7200	0°00'40"	10.50 A	SO 13520	Class A
PEG SO 13520	PEG SO 9485	ob21	191°14'00"	A SO 7588		72.43 A	SO 7588	Class A
PEG SO 9485	PEG SO 9529	ob16	191°14'00"	A SO 9529		4.22 A	SO 9529	Class A
PEG SO 9529	PEG SO 9529	ob17	191°19'00"	A SO 9529		50.29 A	SO 9529	Class A
PEG SO 9529	PEG SO 7200	ob18	281°14'00"	A SO 8760		109.25 A	SO 7200	Class A
PEG 1 SO 550634	PEG 2 SO 550634	ob48	144°09'00"	C		32.70 C		Class A
PEG 2 SO 550634	PEG 3 SO 550634	ob51	144°03'00"	C		5.15 C		Class A
PEG 3 SO 550634	DISC 4 SO 550634	ob50	144°03'00"	C		18.41 C		Class A
DISC 4 SO 550634	DISC 5 SO 550634	ob49	105°38'00"	C		19.17 C		Class A
DISC 5 SO 550634	PEG SO 13520	ob52	69°49'00"	C		5.46 C		Class A

Mark Name	Description
DISC 4 SO 550634	in post
DISC 5 SO 550634	in post
IS II DP 27762	flush
IS SO 7100	top bent over, position to vertical base
IT 1 DP 372826	flush
IT 2 DP 372826	flush
IT 2 SO 550634	d0.3



Mark and Vector

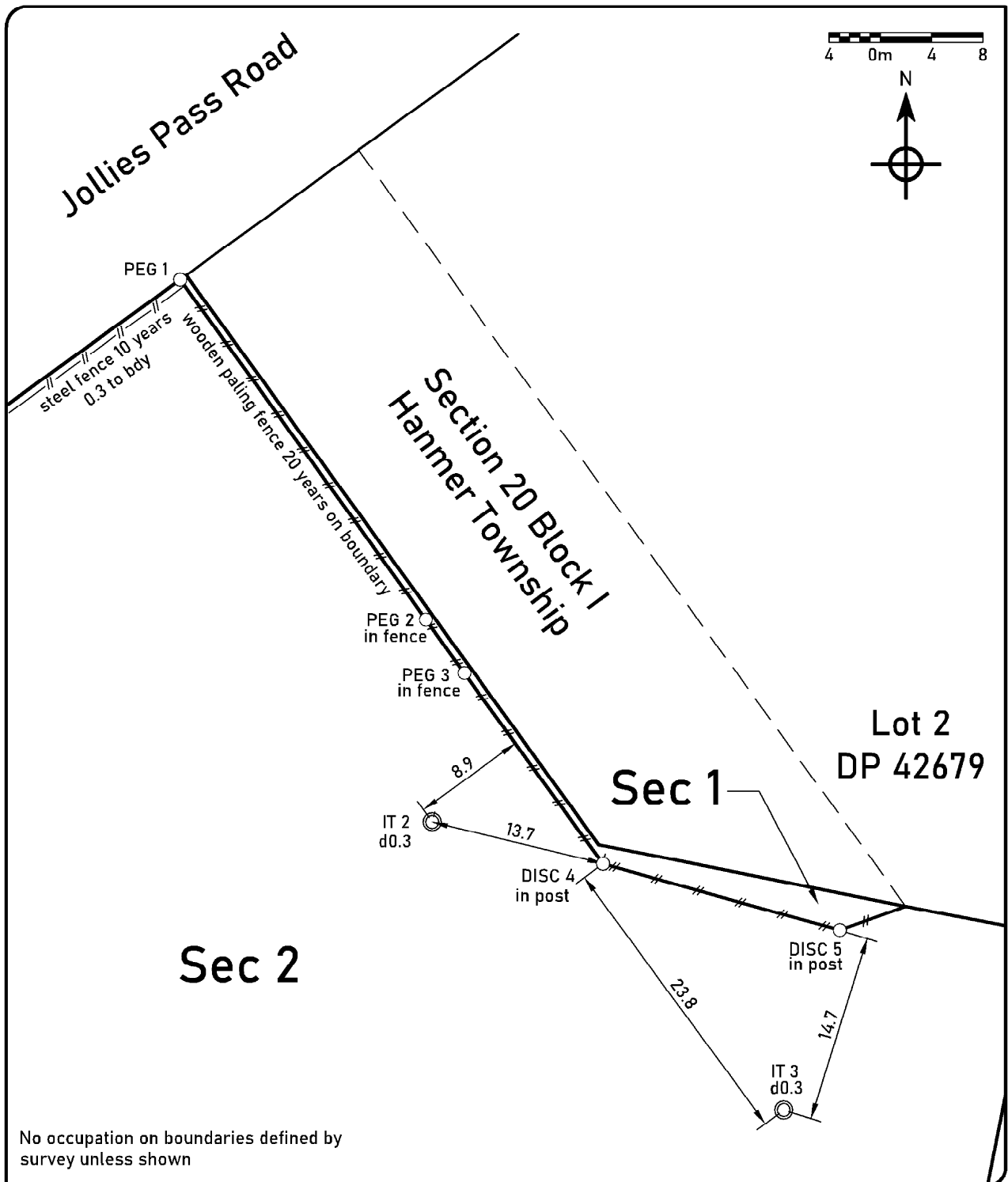
Survey Number SO 550634
Meridional Circuit Amuri 2000

Mark Name	Description
IT 3 SO 550634	d0.3
IT I DP 42679	d0.05
IT II DP 42679	d0.02
IT VII SO 16142	flush
RN 1 SO 550634	in kerb

***** End of Report *****

Occupation Diagram

K:\4718C Chantellinis Ltd - 11 Jollies Pass Road\CAD\4718C 20200730 legal occ diag.dwg : 30 Jul 2020 3:51 PM : Occupation



Occupation Diagram SO 550634



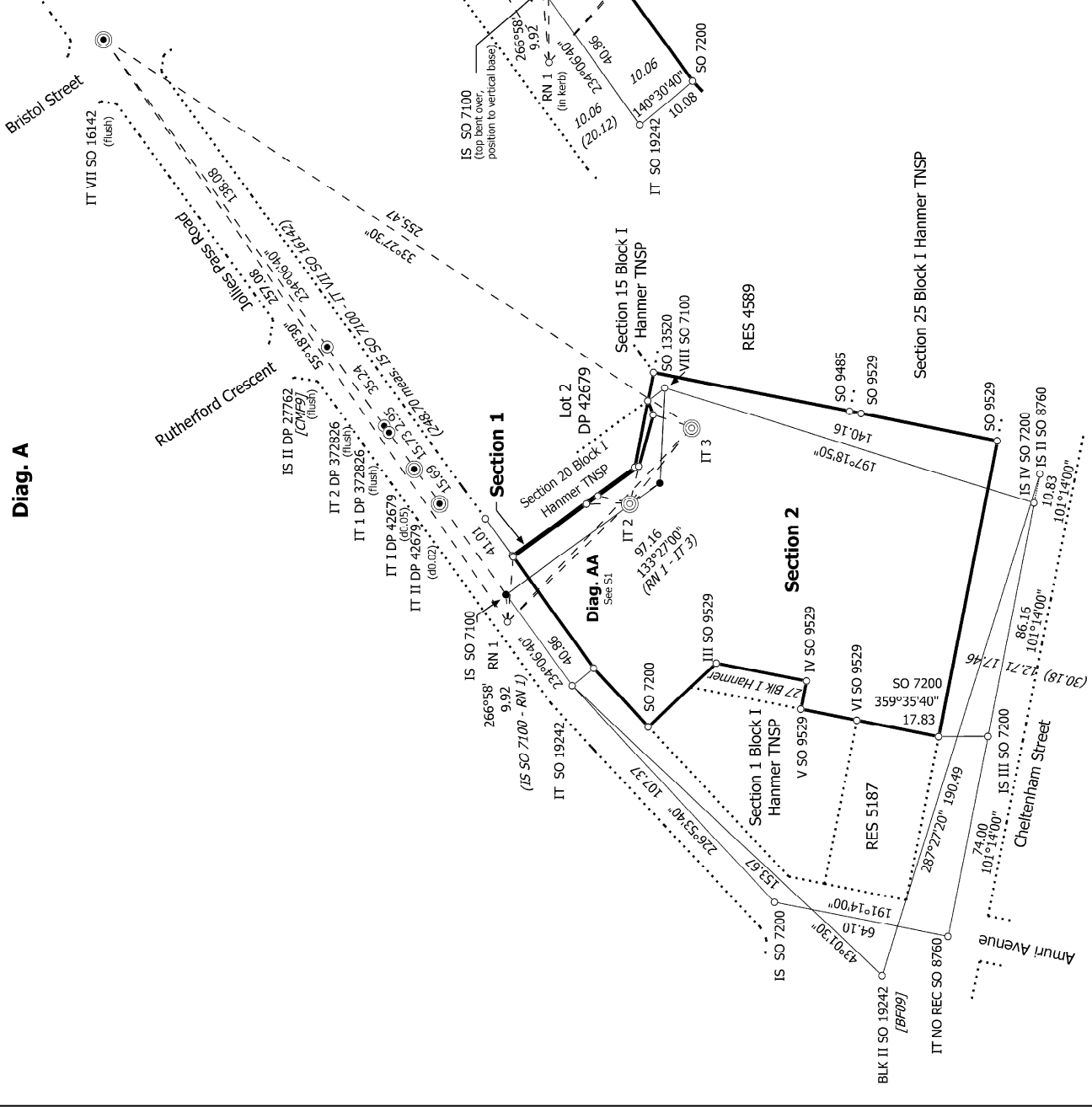
creating legacies with land

www.foxsurvey.co.nz
0800 FOX SURVEY
P.O.Box 895
CHRISTCHURCH

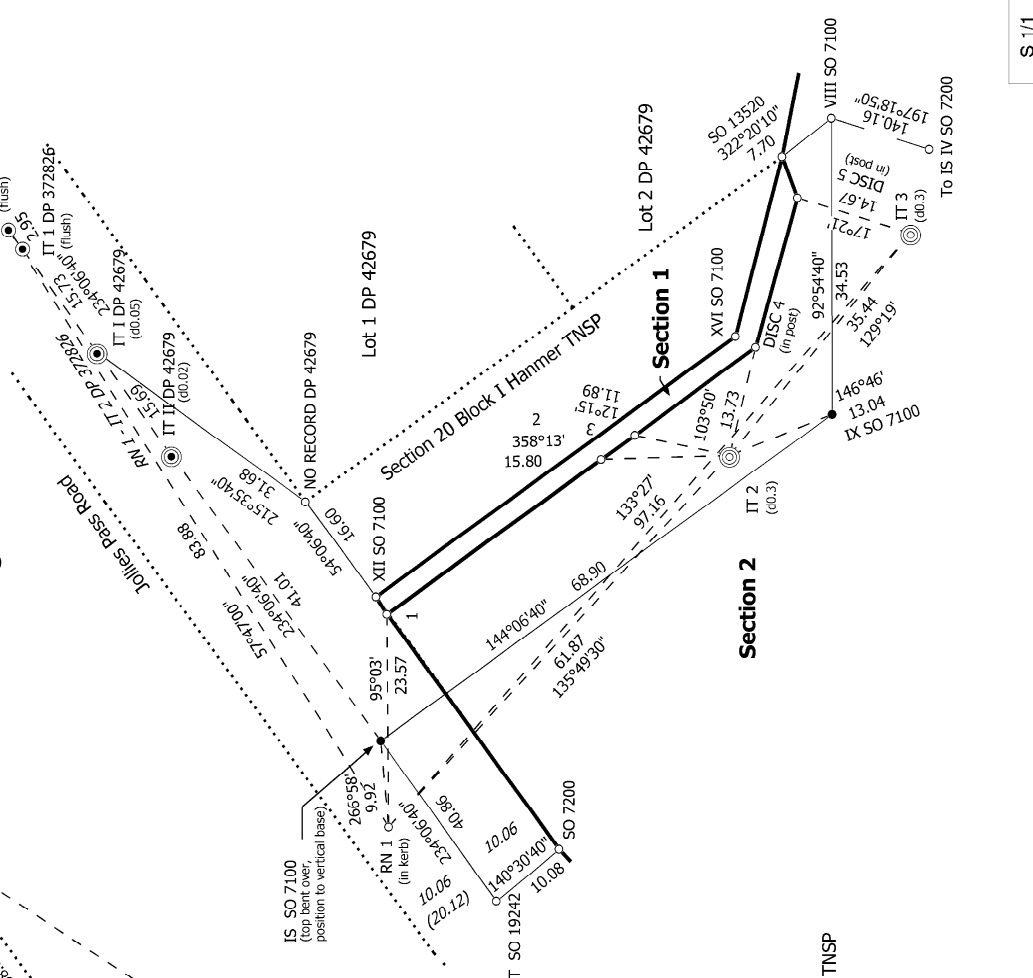
Scale	1:400	Job No	4718C
Designed		Rev.	
Drawn	ADJL		
Date	30/7/20		



Diag. A



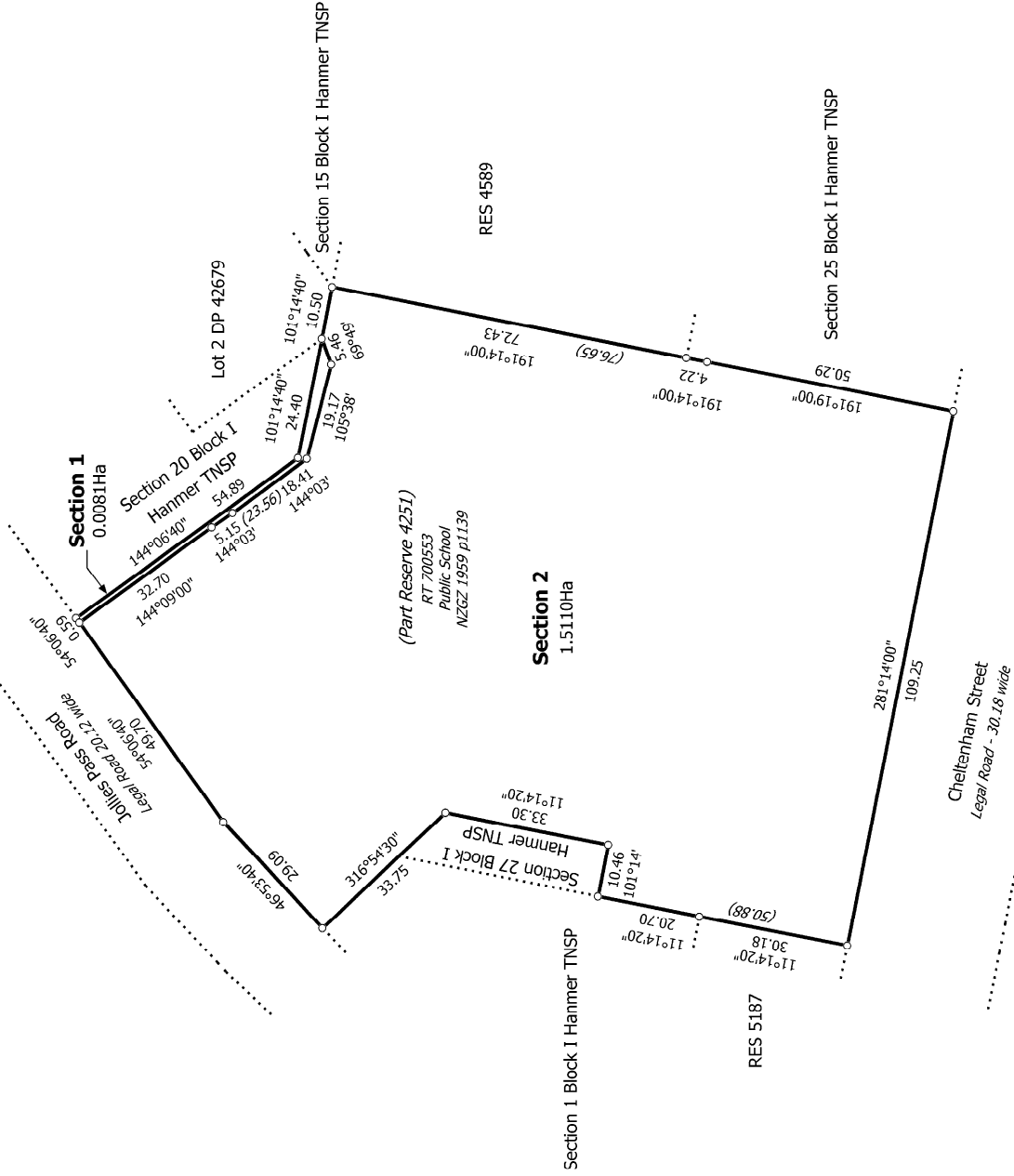
Diag. AA



Land District: Canterbury	Sections 1 & 2	Surveyor: Alexander David John Liggitt Firm: Fox and Associates Survey Date: 28/07/2020	CSD Plan SO 550634 Approved on: 26/08/2020
Digitally Generated Plan Generated on: 23/08/2020 10:27:am Page 7 of 8			



Diag. A



Note:
 Section 1 hereon is subject to Part 4A Conservation Act 1987 upon disposition.

Land District: Canterbury

Sections 1 & 2

Surveyor: Alexander David John Liggett
 Firm: Fox and Associates
 Survey Date: 28/07/2020

CSD Plan
 SO 550634
 Approved on: 26/08/2020

T 1/1

Digitally Generated Plan

Generated on: 23/08/2020 10:27am Page 3 of 8