



CSD Plan - SO 474486

Survey Number SO 474486
Surveyor Reference L05-12692 Rainbow Marginal Strips MB
Surveyor Alexander David John Liggett
Survey Firm Andersen & Associates
Surveyor Declaration I Alexander David John Liggett, being a licensed cadastral surveyor, certify that:
 (a) this dataset provided by me and its related survey are accurate, correct and in accordance with the Cadastral Survey Act 2002 and the Rules for Cadastral Survey 2010, and
 (b) the survey was undertaken by me or under my personal direction.
 Declared on 25 Sep 2014 09:56 AM

Survey Details

Dataset Description MARGINAL STRIPS OVER PART SECTION 1 BLOCK III RAGLAN SD, PART SECTION 1 BLOCK IV RAGLAN SD AND SECTIONS 1-6 SO 7275
Purpose Statutory Easement/Right
Status Approved as to Survey
Land District Marlborough
Meridional Circuit Marlborough 1949

Type	Survey
Survey Class	Class B

Survey Dates

Surveyed Date	10/04/2014	Certified Date	25/09/2014
Submitted Date	25/09/2014 09:56:20	Survey Approval Date	25/09/2014
Deposit Date			

Referenced Surveys

Survey Number	Land District	Bearing Correction
SO 671	Marlborough	0°00'00"
SO 4404	Marlborough	0°00'00"
SO 1439	Marlborough	0°00'00"
SO 2285	Marlborough	0°00'00"
SO 6110	Marlborough	0°00'00"
SO 7275	Marlborough	0°00'00"

Territorial Authorities

Marlborough District

Comprised In

CT MB4B/242

Created Parcels

Parcels	Parcel Intent	Area	CT Reference
Marginal Strip A Survey Office Plan 474486	Marginal Strip - Movable		
Marginal Strip B Survey Office Plan 474486	Marginal Strip - Movable		
Marginal Strip C Survey Office Plan 474486	Marginal Strip - Movable		



CSD Plan - SO 474486

Created Parcels

Parcels	Parcel Intent	Area	CT Reference
Marginal Strip D Survey Office Plan 474486	Marginal Strip - Movable		
Marginal Strip E Survey Office Plan 474486	Marginal Strip - Movable		
Marginal Strip F Survey Office Plan 474486	Marginal Strip - Movable		
Marginal Strip G Survey Office Plan 474486	Marginal Strip - Movable		
Marginal Strip H Survey Office Plan 474486	Marginal Strip - Movable		
Marginal Strip J Survey Office Plan 474486	Marginal Strip - Movable		
Marginal Strip K Survey Office Plan 474486	Marginal Strip - Movable		
Marginal Strip L Survey Office Plan 474486	Marginal Strip - Movable		
Marginal Strip M Survey Office Plan 474486	Marginal Strip - Movable		
Marginal Strip N Survey Office Plan 474486	Marginal Strip - Movable		
Marginal Strip P Survey Office Plan 474486	Marginal Strip - Movable		
Total Area		<hr/> 0.0000 Ha	

Mark and Vector

Survey Number SO 474486
Meridional Circuit Marlborough 1949

From	To	Code	Bearing	Adpt Surv	Distance	Adpt Surv
R 7	IT IX SO 6110	ob1	250°22'15" A	SO 7275	979.71	A SO 7275
IT IX SO 6110	R 6	ob6	246°42'45" A	SO 6110	901.90	A SO 6110
R 6	IT X SO 6110	ob13	233°49'00" A	SO 7275	695.36	A SO 7275
IT X SO 6110	IT XI SO 6110	ob14	254°57'45" A	SO 6110	773.54	A SO 6110
IT XI SO 6110	IT XII SO 6110	ob16	235°04'45" A	SO 6110	185.10	A SO 6110
IT XII SO 6110	R 5	ob18	245°00'15" A	SO 6110	352.04	A SO 6110
R 5	IT XIII SO 6110	ob19	227°04'00" A	SO 7275	328.75	A SO 7275
IT XIII SO 6110	R 4	ob21	233°28'03" A	SO 7275	773.30	A SO 7275
R 4	IS X SO 7275	ob22	230°54'00" A	SO 7275	145.94	A SO 7275
IS X SO 7275	IS XIV SO 6110	ob23	246°55'10" A	SO 7275	218.46	A SO 7275
IS XIV SO 6110	IT XV SO 6110	ob27	249°53'25" A	SO 7275	584.62	A SO 7275
IT XV SO 6110	R 3	ob28	235°33'48" A	SO 7275	626.77	A SO 7275
R 3	IS I SO 7275	ob29	232°14'55" A	SO 7275	245.39	A SO 7275
IS I SO 7275	IS II SO 7275	ob34	213°12'15" A	SO 7275	249.85	A SO 7275
IS II SO 7275	IS III SO 7275	ob35	227°42'55" A	SO 7275	318.85	A SO 7275
IS III SO 7275	IT IV SO 7275	ob36	237°16'30" A	SO 7275	569.91	A SO 7275
IT IV SO 7275	R 2	ob37	231°07'50" A	SO 7275	193.29	A SO 7275
R 2	R 1	ob38	228°31'45" A	SO 6110	1,482.15	A SO 6110
IT IX SO 7275	IS X SO 7275	ob66	69°16'10" A	SO 7275	239.02	A SO 7275
IS X SO 7275	IT Wit SO 2285	ob71	247°19'00" A	SO 7275	448.39	A SO 7275
IT Wit SO 2285	R 7	ob72	251°58'50" A	SO 7275	179.69	A SO 7275
IT IX SO 7275	PEG SO 7275	ob67	145°57'00" A	SO 7275	55.75	A SO 7275
IT IX SO 7275	PEG SO 7275	ob68	72°36'00" A	SO 7275	42.96	A SO 7275
IT IX SO 7275	PEG SO 7275	ob69	191°17'00" A	SO 7275	16.92	A SO 7275
PEG SO 7275	UNMK 3 SO 474486	ob75	56°24'00" A	SO 7275	5.48	C
UNMK 3 SO 474486	UNMK SO 7275	ob127	56°24'00" A	SO 7275	20.72	C
UNMK SO 7275	UNMK SO 7275	ob76	56°24'00" A	SO 7275	18.99	C
UNMK SO 7275	PEG SO 7275	ob77	56°24'00" A	SO 7275	8.00	A SO 7275
PEG SO 7275	UNMK 1 SO 474486	ob74	56°24'00" A	SO 7275	11.99	C
UNMK 1 SO 474486	PEG SO 2285	ob125	56°24'00" A	SO 7275	53.81	C
PEG SO 2285	PEG SO 2285	ob79	84°42'00" A	SO 2285	106.46	A SO 2285
PEG SO 2285	PEG SO 2285	ob81	72°21'00" A	SO 2285	403.52	A SO 2285
PEG SO 2285	PEG SO 1439	ob82	89°21'00" A	SO 2285	48.30	A SO 2285
PEG SO 1439	UNMK SO 1439	ob83	142°15'00" A	SO 1439	160.93	A SO 1439
UNMK SO 1439	UNMK SO 7275	ob84	258°13'00" A	SO 7275	11.00	A SO 7275
UNMK SO 7275	UNMK SO 7275	ob85	266°03'00" A	SO 7275	16.21	A SO 7275
UNMK SO 7275	UNMK SO 7275	ob86	298°09'00" A	SO 7275	44.94	A SO 7275
UNMK SO 7275	UNMK SO 7275	ob87	266°48'00" A	SO 7275	30.91	A SO 7275
UNMK SO 7275	UNMK SO 7275	ob88	249°17'00" A	SO 7275	85.01	A SO 7275
UNMK SO 7275	UNMK SO 7275	ob89	261°36'10" A	SO 7275	288.23	A SO 7275
UNMK SO 7275	UNMK SO 7275	ob90	285°21'40" A	SO 7275	64.57	A SO 7275
UNMK SO 7275	UNMK 2 SO 474486	ob91	251°53'00" A	SO 7275	131.01	C

Mark and Vector

Survey Number SO 474486
Meridional Circuit Marlborough 1949

From	To	Code	Bearing	Adpt Surv	Distance	Adpt Surv
UNMK 2 SO 474486	UNMK SO 7275	ob126	251°53'00" A	SO 7275	21.26	C
UNMK SO 7275	UNMK SO 7275	ob92	246°12'10" C		34.49	C
R 1	UNMK 33 SO 474486	ob2	188°42'40" C		773.05	C
R 1	UNMK 31 SO 474486	ob3	187°15'15" C		743.38	C
R 1	UNMK 30 SO 474486	ob4	155°27'40" C		450.01	C
R 1	UNMK 32 SO 474486	ob5	151°49'20" C		419.13	C
IS X SO 7275	UNMK 17 SO 474486	ob24	224°49'00" C		349.30	C
IS X SO 7275	UNMK 13 SO 474486	ob25	222°36'20" C		301.52	C
R 2	UNMK 29 SO 474486	ob39	206°50'10" C		916.30	C
R 2	UNMK 27 SO 474486	ob40	200°59'15" C		871.34	C
R 2	UNMK 26 SO 474486	ob41	193°09'55" C		599.03	C
R 2	UNMK 28 SO 474486	ob42	190°34'35" C		544.38	C
R 2	UNMK 25 SO 474486	ob43	171°20'50" C		409.95	C
R 2	UNMK 23 SO 474486	ob44	166°37'00" C		399.49	C
R 2	UNMK 22 SO 474486	ob45	104°04'50" C		530.93	C
R 2	UNMK 24 SO 474486	ob46	100°38'45" C		556.09	C
R 3	UNMK 21 SO 474486	ob30	126°20'00" C		276.75	C
R 3	UNMK 19 SO 474486	ob31	119°40'30" C		303.54	C
R 3	UNMK 18 SO 474486	ob32	80°02'40" C		652.82	C
R 3	UNMK 20 SO 474486	ob33	78°23'50" C		671.20	C
IT IX SO 6110	UNMK SO 7275	ob7	172°04'20" C		435.92	C
IT IX SO 6110	UNMK SO 7275	ob8	140°06'10" C		434.50	C
IT IX SO 6110	UNMK SO 7275	ob9	125°47'50" C		488.42	C
IT IX SO 6110	UNMK SO 7275	ob10	202°51'25" C		632.91	C
IT IX SO 6110	UNMK SO 7275	ob11	205°48'35" C		683.63	C
IT IX SO 6110	UNMK 8 SO 474486	ob12	205°28'05" C		660.28	C
IT X SO 6110	UNMK SO 7275	ob15	134°52'30" C		55.17	C
IT XI SO 6110	UNMK SO 7275	ob17	139°17'40" C		203.83	C
IS X SO 7275	PEG SO 7275	ob26	120°26'00" A	SO 7275	6.71	A SO 7275
R 5	PEG SO 7275	ob20	208°33'00" A	SO 7275	57.61	A SO 7275
PEG SO 7275	UNMK 4 SO 474486	ob73	241°03'00" A	SO 7275	20.19	C
UNMK 4 SO 474486	UNMK SO 7275	ob128	241°03'00" A	SO 7275	131.53	C
UNMK SO 7275	UNMK SO 7275	ob109	249°48'40" A	SO 7275	153.87	A SO 7275
UNMK SO 7275	UNMK SO 7275	ob110	280°47'00" A	SO 7275	49.85	A SO 7275
UNMK SO 7275	UNMK SO 7275	ob111	234°58'40" A	SO 7275	140.58	A SO 7275
UNMK SO 7275	UNMK SO 7275	ob112	207°26'00" A	SO 7275	35.99	A SO 7275
UNMK SO 7275	UNMK SO 7275	ob113	211°42'00" A	SO 7275	43.52	A SO 7275
UNMK SO 7275	UNMK SO 7275	ob114	196°01'40" A	SO 7275	93.22	A SO 7275
UNMK SO 7275	UNMK SO 7275	ob115	209°10'40" A	SO 7275	57.39	A SO 7275
UNMK SO 7275	UNMK SO 7275	ob116	227°47'00" A	SO 7275	120.02	A SO 7275
UNMK SO 7275	UNMK SO 7275	ob117	213°20'40" A	SO 7275	175.95	A SO 7275
UNMK SO 7275	UNMK SO 7275	ob118	275°16'20" A	SO 7275	90.84	A SO 7275
UNMK SO 7275	UNMK SO 7275	ob119	221°35'00" A	SO 7275	86.34	A SO 7275

Mark and Vector

Survey Number SO 474486
Meridional Circuit Marlborough 1949

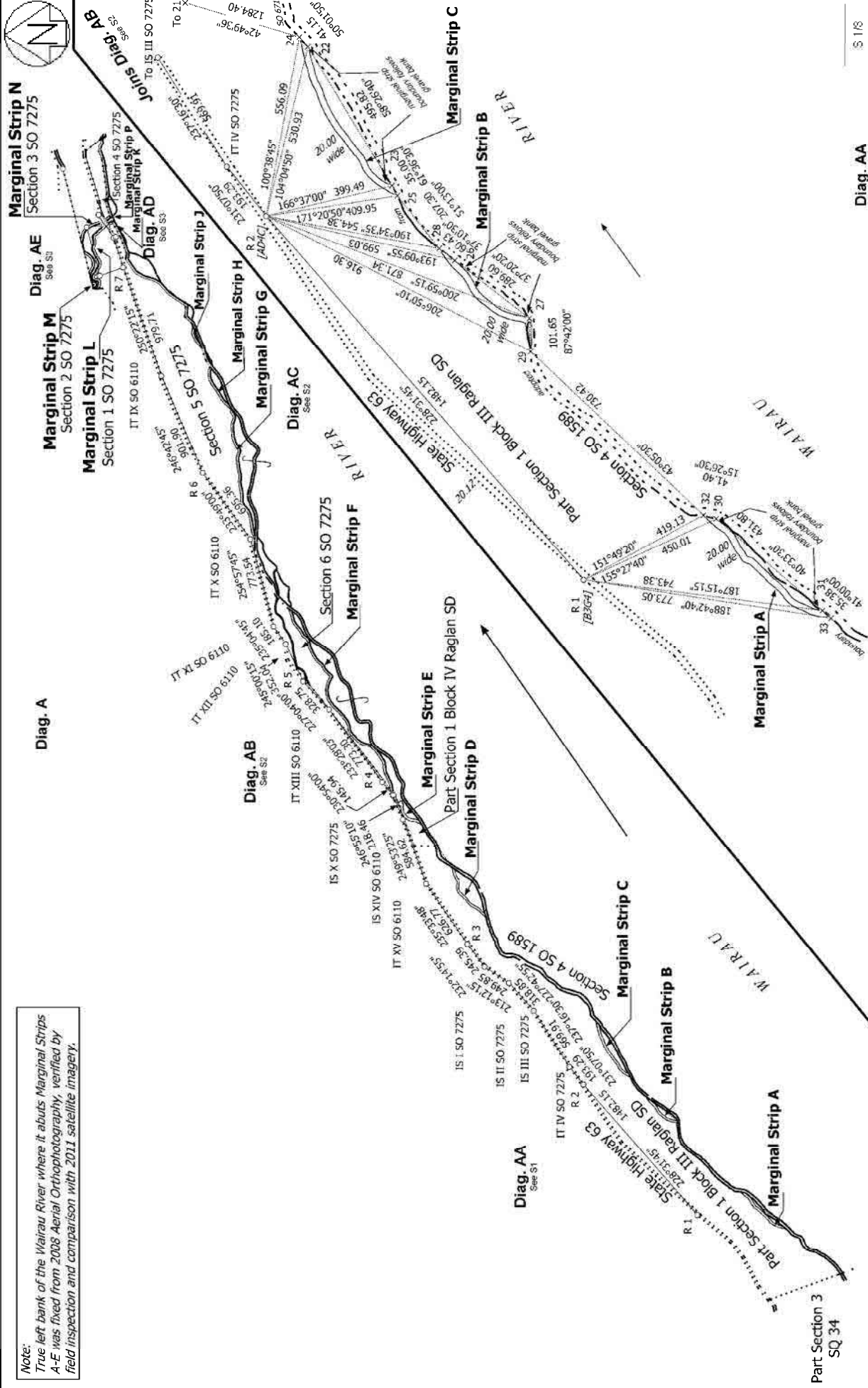
From	To	Code	Bearing	Adpt Surv	Distance	Adpt Surv
UNMK SO 7275	UNMK 5 SO 474486	ob120	246°38'00" A	SO 7275	16.18	C
UNMK 5 SO 474486	UNMK SO 7275	ob129	246°38'00" A	SO 7275	39.48	C
UNMK SO 7275	UNMK SO 7275	ob108	249°09'00" A	SO 7275	42.49	A SO 7275
UNMK SO 7275	UNMK 6 SO 474486	ob121	252°15'20" A	SO 7275	5.47	C
UNMK 6 SO 474486	UNMK SO 7275	ob130	252°15'20" A	SO 7275	108.72	C
UNMK SO 7275	UNMK 7 SO 474486	ob122	235°20'00" A	SO 7275	62.36	C
UNMK 7 SO 474486	UNMK SO 7275	ob131	235°20'00" A	SO 7275	22.89	C
UNMK SO 7275	UNMK SO 7275	ob123	240°50'00" A	SO 7275	39.08	A SO 7275
UNMK SO 7275	UNMK SO 7275	ob124	233°16'00" A	SO 7275	22.05	A SO 7275
UNMK SO 7275	UNMK 9 SO 474486	ob106	272°02'20" A	SO 7275	47.65	C
UNMK 9 SO 474486	UNMK SO 7275	ob107	272°02'20" A	SO 7275	23.51	C
UNMK SO 7275	UNMK 10 SO 474486	ob103	215°39'00" A	SO 7275	1.54	C
UNMK 10 SO 474486	UNMK SO 7275	ob104	215°39'00" A	SO 7275	32.72	C
PEG SO 7275	PEG SO 2285	ob100	229°43'00" A	SO 2285	179.39	A SO 7275
PEG SO 2285	PEG SO 2285	ob101	232°16'30" A	SO 2285	866.05	A SO 7275
PEG SO 2285	UNMK 11 SO 474486	ob102	235°20'00" A	SO 2285	101.22	C
UNMK 11 SO 474486	PEG SO 7275	ob132	235°20'00" A	SO 2285	44.97	C
PEG SO 7275	UNMK SO 7275	ob93	235°20'00" A	SO 2285	28.10	A SO 7275
UNMK SO 7275	PEG SO 2285	ob94	235°20'00" A	SO 2285	18.93	A SO 7275
PEG SO 2285	UNMK 12 SO 474486	ob95	248°42'30" A	SO 2285	4.22	C
UNMK 12 SO 474486	UNMK 14 SO 474486	ob99	248°42'30" A	SO 2285	61.62	C
UNMK 14 SO 474486	UNMK 15 SO 474486	ob133	248°42'30" A	SO 2285	42.03	C
UNMK 15 SO 474486	UNMK 16 SO 474486	ob98	248°42'30" A	SO 2285	16.08	C
UNMK 16 SO 474486	PEG SO 2285	ob97	248°42'30" A	SO 2285	299.47	C
PEG SO 2285	IS XIV SO 6110	ob96	66°32'40" C		246.84	C
UNMK 8 SO 474486	UNMK SO 7275	ob80	147°03'00" C		7.30	C
UNMK 22 SO 474486	UNMK 24 SO 474486	ob57	50°01'50" C		41.15	C
UNMK 33 SO 474486	UNMK 31 SO 474486	ob47	41°00'00" C		35.38	C
UNMK 31 SO 474486	UNMK 30 SO 474486	ob48	40°33'30" C		431.80	C
UNMK 30 SO 474486	UNMK 32 SO 474486	ob49	15°26'30" C		41.40	C
UNMK 32 SO 474486	UNMK 29 SO 474486	ob50	43°05'30" C		730.42	C
UNMK 29 SO 474486	UNMK 27 SO 474486	ob51	87°42'00" C		101.65	C
UNMK 27 SO 474486	UNMK 26 SO 474486	ob52	37°20'20" C		289.60	C
UNMK 26 SO 474486	UNMK 28 SO 474486	ob53	37°10'30" C		60.43	C
UNMK 28 SO 474486	UNMK 25 SO 474486	ob54	51°13'00" C		207.30	C
UNMK 25 SO 474486	UNMK 23 SO 474486	ob55	61°36'30" C		35.00	C
UNMK 23 SO 474486	UNMK 22 SO 474486	ob56	58°26'40" C		495.82	C
UNMK 24 SO 474486	UNMK 21 SO 474486	ob58	42°49'36" C		1,284.40	C
UNMK 21 SO 474486	UNMK 19 SO 474486	ob59	71°26'30" C		43.02	C
UNMK 19 SO 474486	UNMK 18 SO 474486	ob60	55°14'50" C		461.61	C
UNMK 18 SO 474486	UNMK 20 SO 474486	ob61	33°13'00" C		26.46	C
UNMK 20 SO 474486	UNMK 17 SO 474486	ob62	54°34'40" C		445.70	C
UNMK 17 SO 474486	UNMK 13 SO 474486	ob63	58°26'20" C		49.39	C

Mark and Vector

Survey Number SO 474486
Meridional Circuit Marlborough 1949

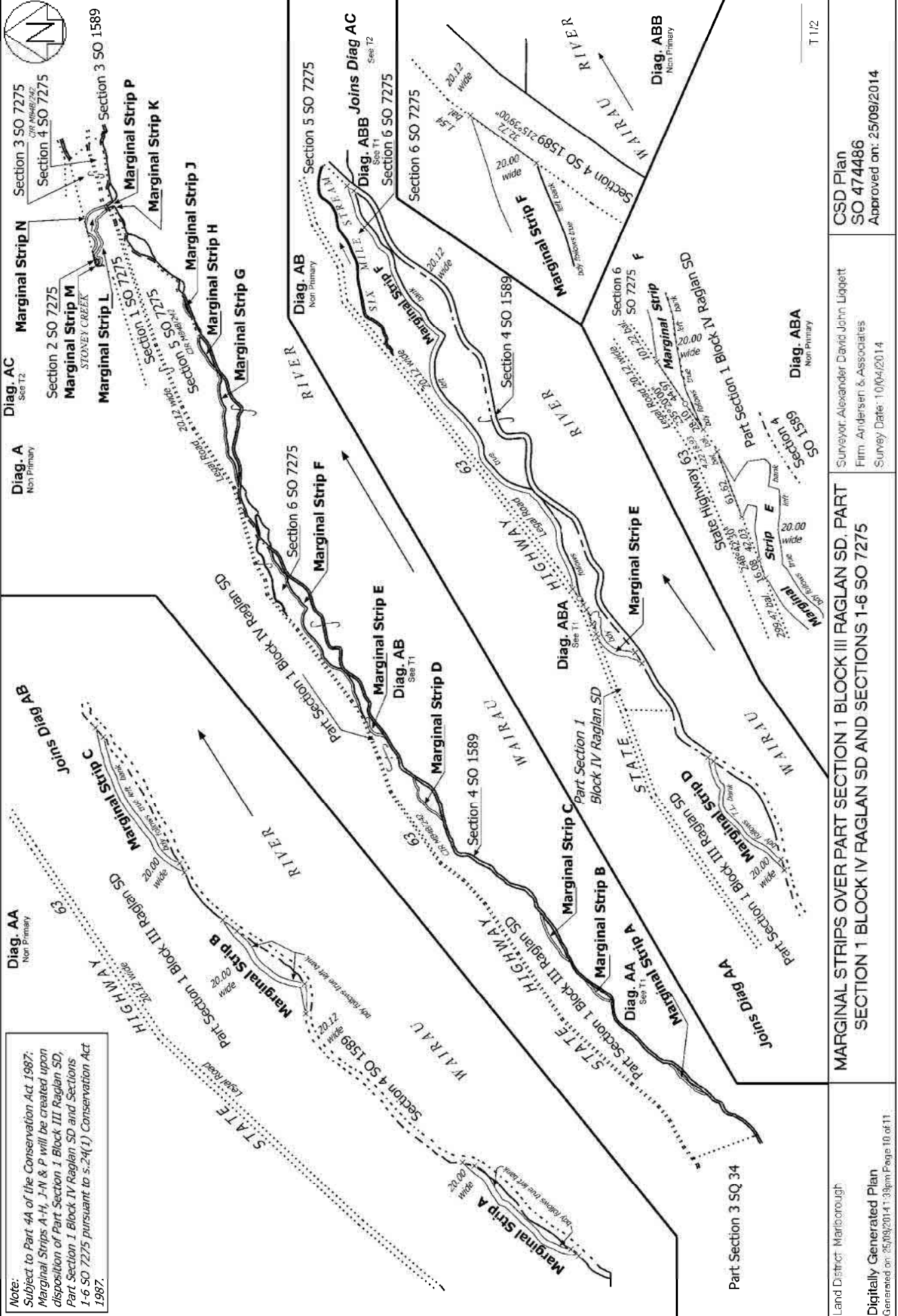
From	To	Code	Bearing	Adpt Surv	Distance	Adpt Surv
UNMK SO 7275	PEG SO 7275	ob134	241°03'00" A	SO 7275	1.50	A SO 7275
R 7	IS VII SO 7275	ob0	340°43'30" A	SO 7275	215.41	A SO 7275
IS VII SO 7275	IS VIII SO 7275	ob135	74°49'10" A	SO 7275	430.80	A SO 7275
IS VIII SO 7275	IT IX SO 7275	ob138	174°33'40" A	SO 7275	173.06	A SO 7275
IS VII SO 7275	PEG SO 7275	ob136	8°50'00" A	SO 7275	88.44	A SO 7275
IS VII SO 7275	PEG SO 7275	ob137	325°24'00" A	SO 7275	86.66	A SO 7275
IT IX SO 7275	PEG SO 7275	ob64	348°18'00" A	SO 7275	8.76	A SO 7275
IT IX SO 7275	PEG SO 7275	ob65	45°36'00" A	SO 7275	43.37	A SO 7275
IS X SO 7275	PEG SO 4404	ob70	41°24'30" C		390.15	C
PEG SO 4404	UNMK 39 SO 474486	ob143	255°38'40" A	SO 4404	619.07	C
UNMK 39 SO 474486	UNMK 40 SO 474486	ob144	255°38'40" A	SO 4404	133.71	C
UNMK 40 SO 474486	UNMK 41 SO 474486	ob145	255°38'40" A	SO 4404	153.60	C
UNMK 41 SO 474486	PEG SO 7275	ob146	255°38'40" A	SO 4404	22.80	C
PEG SO 7275	UNMK SO 7275	ob139	255°38'40" A	SO 7275	9.00	A SO 7275
UNMK SO 7275	UNMK SO 7275	ob147	255°38'40" A	SO 7275	46.80	A SO 7275
UNMK SO 7275	PEG SO 7275	ob148	255°38'40" A	SO 7275	9.00	A SO 7275
PEG SO 7275	UNMK 34 SO 474486	ob140	255°38'40" A	SO 4404	22.50	C
UNMK 34 SO 474486	UNMK 35 SO 474486	ob149	255°38'40" A	SO 4404	15.33	C
UNMK 35 SO 474486	PEG SO 4404	ob150	255°38'40" A	SO 4404	24.19	C
PEG SO 4404	UNMK SO 7275	ob151	186°51'00" A	SO 4404	1.70	A SO 7275
UNMK SO 7275	UNMK SO 7275	ob152	186°51'00" A	SO 4404	14.53	A SO 7275
UNMK SO 7275	UNMK SO 7275	ob153	186°51'00" A	SO 4404	7.00	A SO 7275
UNMK SO 7275	UNMK 36 SO 474486	ob154	171°02'00" A	SO 4404	21.49	C
UNMK 36 SO 474486	PEG II SO 669	ob155	171°02'00" A	SO 4404	31.32	C
PEG II SO 669	IS VII SO 7275	ob156	79°28'50" C		105.61	C
PEG SO 2285	PEG SO 2285	ob78	340°33'00" C		20.75	C
PEG SO 2285	UNMK 38 SO 474486	ob157	236°24'00" A	SO 2285	57.14	C
UNMK 38 SO 474486	PEG SO 7275	ob158	236°24'00" A	SO 2285	12.39	C
PEG SO 7275	UNMK SO 7275	ob142	236°24'00" A	SO 7275	8.00	A SO 7275
UNMK SO 7275	UNMK SO 7275	ob159	236°24'00" A	SO 7275	21.33	C
UNMK SO 7275	PEG SO 7275	ob160	236°24'00" A	SO 7275	10.00	A SO 7275
PEG SO 7275	UNMK 37 SO 474486	ob141	236°24'00" A	SO 2285	10.04	C
UNMK 37 SO 474486	PEG SO 2285	ob161	236°24'00" A	SO 2285	115.89	C
PEG SO 2285	PEG SO 2285	ob162	156°34'30" C		20.44	C
PEG SO 2285	PEG SO 7275	ob163	56°24'00" A	SO 2285	114.33	C
UNMK 10 SO 474486	UNMK 9 SO 474486	ob105	63°34'50" C		654.93	C

*** End of Report ***



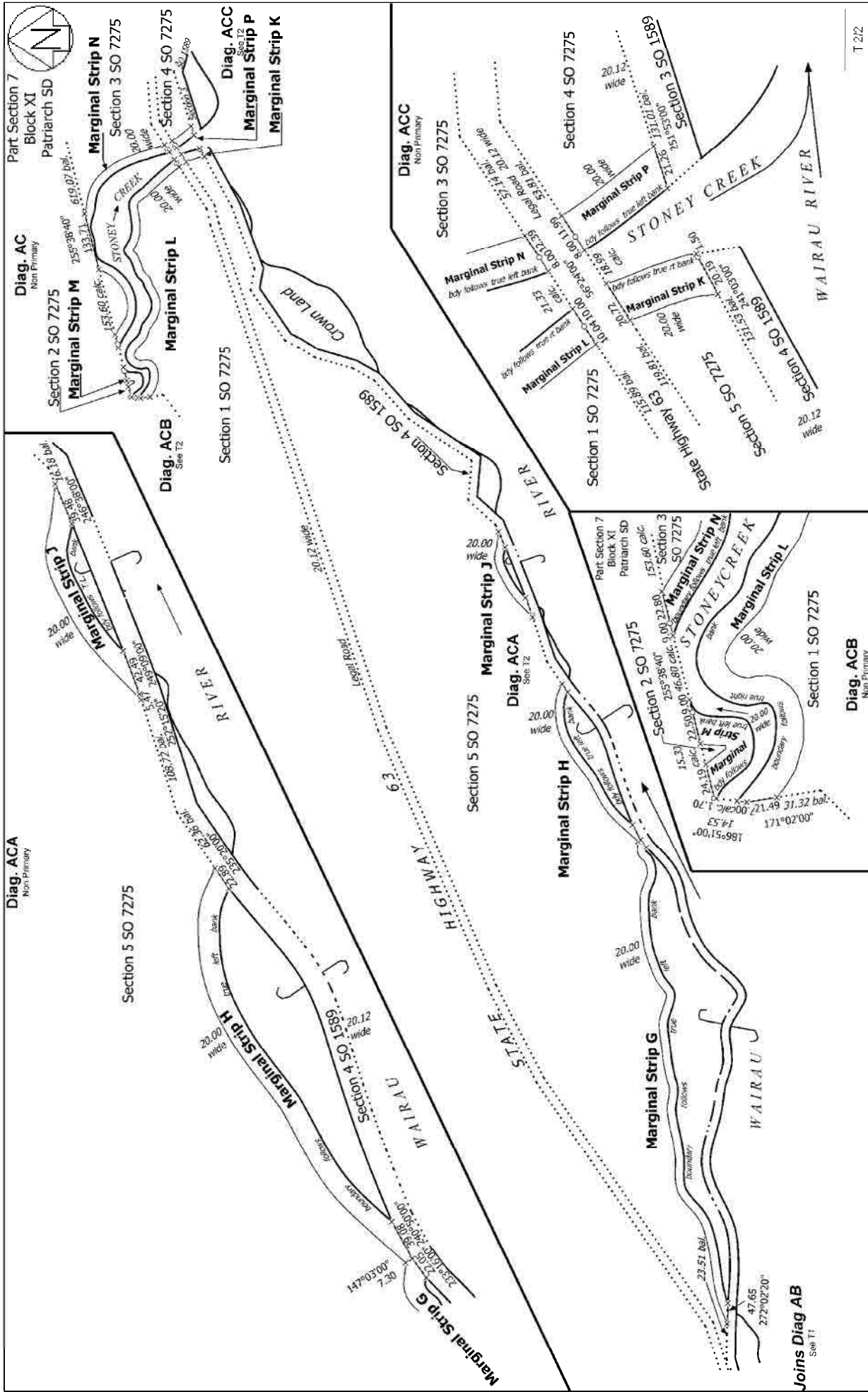
<p>Diag. AA</p> <p>Section 3 SO 7275</p> <p>Section 2 SO 7275</p> <p>Section 1 SO 7275</p> <p>Section 4 SO 7275</p> <p>Section 5 SO 7275</p> <p>Section 6 SO 7275</p> <p>Section 7 SO 7275</p> <p>Section 8 SO 7275</p> <p>Section 9 SO 7275</p> <p>Section 10 SO 7275</p> <p>Section 11 SO 7275</p> <p>Diag. AE</p> <p>Diag. AD</p> <p>Diag. AC</p> <p>Diag. AB</p> <p>Diag. AA</p> <p>Diag. AB</p> <p>Diag. AC</p> <p>Diag. AD</p> <p>Diag. AE</p> <p>Diag. AF</p> <p>Diag. AG</p> <p>Diag. AH</p> <p>Diag. AI</p> <p>Diag. AJ</p>	<p>Part Section 3 SQ 34</p> <p>Part Section 1 Block III Raglan SD</p> <p>Part Section 1 Block IV Raglan SD</p> <p>Part Section 1 Block I Raglan SD</p> <p>State Highway 63</p> <p>Wairau River</p> <p>Marginal Strip A</p> <p>Marginal Strip B</p> <p>Marginal Strip C</p> <p>Marginal Strip D</p> <p>Marginal Strip E</p> <p>Marginal Strip F</p> <p>Marginal Strip G</p> <p>Marginal Strip H</p> <p>Marginal Strip J</p> <p>Marginal Strip L</p> <p>Marginal Strip M</p> <p>Marginal Strip N</p> <p>Marginal Strip P</p>	<p>Diag. AA</p> <p>Section 3 SO 7275</p> <p>Section 2 SO 7275</p> <p>Section 1 SO 7275</p> <p>Section 4 SO 7275</p> <p>Section 5 SO 7275</p> <p>Section 6 SO 7275</p> <p>Section 7 SO 7275</p> <p>Section 8 SO 7275</p> <p>Section 9 SO 7275</p> <p>Section 10 SO 7275</p> <p>Section 11 SO 7275</p> <p>Diag. AE</p> <p>Diag. AD</p> <p>Diag. AC</p> <p>Diag. AB</p> <p>Diag. AA</p> <p>Diag. AB</p> <p>Diag. AC</p> <p>Diag. AD</p> <p>Diag. AE</p> <p>Diag. AF</p> <p>Diag. AG</p> <p>Diag. AH</p> <p>Diag. AI</p> <p>Diag. AJ</p>	<p>Part Section 3 SQ 34</p> <p>Part Section 1 Block III Raglan SD</p> <p>Part Section 1 Block IV Raglan SD</p> <p>Part Section 1 Block I Raglan SD</p> <p>State Highway 63</p> <p>Wairau River</p> <p>Marginal Strip A</p> <p>Marginal Strip B</p> <p>Marginal Strip C</p> <p>Marginal Strip D</p> <p>Marginal Strip E</p> <p>Marginal Strip F</p> <p>Marginal Strip G</p> <p>Marginal Strip H</p> <p>Marginal Strip J</p> <p>Marginal Strip L</p> <p>Marginal Strip M</p> <p>Marginal Strip N</p> <p>Marginal Strip P</p>	<p>Diag. AA</p> <p>Section 3 SO 7275</p> <p>Section 2 SO 7275</p> <p>Section 1 SO 7275</p> <p>Section 4 SO 7275</p> <p>Section 5 SO 7275</p> <p>Section 6 SO 7275</p> <p>Section 7 SO 7275</p> <p>Section 8 SO 7275</p> <p>Section 9 SO 7275</p> <p>Section 10 SO 7275</p> <p>Section 11 SO 7275</p> <p>Diag. AE</p> <p>Diag. AD</p> <p>Diag. AC</p> <p>Diag. AB</p> <p>Diag. AA</p> <p>Diag. AB</p> <p>Diag. AC</p> <p>Diag. AD</p> <p>Diag. AE</p> <p>Diag. AF</p> <p>Diag. AG</p> <p>Diag. AH</p> <p>Diag. AI</p> <p>Diag. AJ</p>	<p>Part Section 3 SQ 34</p> <p>Part Section 1 Block III Raglan SD</p> <p>Part Section 1 Block IV Raglan SD</p> <p>Part Section 1 Block I Raglan SD</p> <p>State Highway 63</p> <p>Wairau River</p> <p>Marginal Strip A</p> <p>Marginal Strip B</p> <p>Marginal Strip C</p> <p>Marginal Strip D</p> <p>Marginal Strip E</p> <p>Marginal Strip F</p> <p>Marginal Strip G</p> <p>Marginal Strip H</p> <p>Marginal Strip J</p> <p>Marginal Strip L</p> <p>Marginal Strip M</p> <p>Marginal Strip N</p> <p>Marginal Strip P</p>
--------------------------------------------------------------------------------------------------------------------------------------------------------------------------------------------------------------------------------------------------------------------------------------------------------------------------------------------------------------------------------------------------------------------------------------------------------------------------------------------------------------------------------------	----------------------------------------------------------------------------------------------------------------------------------------------------------------------------------------------------------------------------------------------------------------------------------------------------------------------------------------------------------------------------------------------------------------------------------------------------------------------------------------------------------------------------	--------------------------------------------------------------------------------------------------------------------------------------------------------------------------------------------------------------------------------------------------------------------------------------------------------------------------------------------------------------------------------------------------------------------------------------------------------------------------------------------------------------------------------------	----------------------------------------------------------------------------------------------------------------------------------------------------------------------------------------------------------------------------------------------------------------------------------------------------------------------------------------------------------------------------------------------------------------------------------------------------------------------------------------------------------------------------	--------------------------------------------------------------------------------------------------------------------------------------------------------------------------------------------------------------------------------------------------------------------------------------------------------------------------------------------------------------------------------------------------------------------------------------------------------------------------------------------------------------------------------------	----------------------------------------------------------------------------------------------------------------------------------------------------------------------------------------------------------------------------------------------------------------------------------------------------------------------------------------------------------------------------------------------------------------------------------------------------------------------------------------------------------------------------

Note:
True left bank of the Wairau River where it abuts Marginal Strips A-E was fixed from 2008 Aerial Orthophotography, verified by field inspection and comparison with 2011 satellite imagery.



Note:
 Subject to Part 4A of the Conservation Act 1987:
 Marginal Strips A-H, J-N & P will be created upon
 disposition of Part Section 1 Block III Raglan SD,
 Part Section 1 Block IV Raglan SD and Sections
 1-6 SO 7275 pursuant to s.24(1) Conservation Act
 1987.

<p>Land District: Marlborough</p> <p>Digitally Generated Plan</p> <p>Generated on: 25/09/2014 11:39am Page 10 of 11</p>	<p>MARGINAL STRIPS OVER PART SECTION 1 BLOCK III RAGLAN SD, PART SECTION 1 BLOCK IV RAGLAN SD AND SECTIONS 1-6 SO 7275</p>	<p>Surveyor: Alexander David John Liggett Firm: Andersen & Associates Survey Date: 10/04/2014</p>	<p>CSD Plan SO 474486 Approved on: 25/09/2014</p>
-------------------------------------------------------------------------------------------------------------------------	----------------------------------------------------------------------------------------------------------------------------	-----------------------------------------------------------------------------------------------------------------------------	-------------------------------------------------------------------------



Land District: Marlborough Digitally Generated Plan Generated on: 25/09/2014 11:39am Page 11 of 11	MARGINAL STRIPS OVER PART SECTION 1 BLOCK III RAGLAN SD, PART SECTION 1 BLOCK IV RAGLAN SD AND SECTIONS 1-6 SO 7275	Surveyor: Alexander David John Liggett Firm: Andersen & Associates Survey Date: 10/04/2014	CSD Plan SO 474486 Approved on: 25/09/2014
----------------------------------------------------------------------------------------------------------	---------------------------------------------------------------------------------------------------------------------	--------------------------------------------------------------------------------------------------	--------------------------------------------------