



# CSD Plan - LT 467270

---

**Survey Number** LT 467270  
**Surveyor Reference** Q01-12640 QEII OSC Wiffen, Parnassus  
**Surveyor** Alexander David John Liggett  
**Survey Firm** Andersen & Associates  
**Surveyor Declaration** I Alexander David John Liggett, being a licensed cadastral surveyor, certify that:  
(a) this dataset provided by me and its related survey are accurate, correct and in accordance with the Cadastral Survey Act 2002 and the Rules for Cadastral Survey 2010, and  
(b) the survey was undertaken by me or under my personal direction.  
Declared on 19 Sep 2013 02:11 PM

---

## Survey Details

**Dataset Description** PROPOSED OPEN SPACE COVENANTS OVER PART SECTIONS 27 & 28 SQUARE 87 AMURI AND PART SECTION 99 SQUARE 86 AMURI  
**Purpose** Land Transfer Plan Land Covenant  
**Status** Approved as to Survey  
**Land District** Canterbury  
**Coordinate System** Amuri 2000

Type	Survey
<b>Survey Class</b>	Class C

---

## Survey Dates

<b>Surveyed Date</b>	27/08/2013	<b>Certified Date</b>	19/09/2013
<b>Submitted Date</b>	19/09/2013 14:11:43	<b>Survey Approval Date</b>	11/10/2013
<b>Deposit Date</b>			

---

## Referenced Surveys

Survey Number	Land District	Bearing Correction
SO 634	Canterbury	0°00'00"
DP 18587	Canterbury	0°00'00"

---

## Territorial Authorities

Hurunui District

---

## Comprised In

CT CB31A/329 Ltd

---

## Created Parcels

Parcels	Parcel Intent	Area	CT Reference
Area A Deposited Plan 467270	Land Covenant	11.7600 Ha	
Area B Deposited Plan 467270	Land Covenant	8.9600 Ha	
Area C Deposited Plan 467270	Land Covenant	5.3800 Ha	
<b>Total Area</b>		<u>26.1000 Ha</u>	

# Mark and Vector

**Survey Number** DP 467270  
**Coordinate System** Amuri 2000

From	To	Code	Bearing	Adpt Surv	Distance	Adpt Surv
Kaikoura GPS	IT 1 DP 467270	ob0	199°54'11"	M	32,575.03	M
IT 1 DP 467270	IT 2 DP 467270	ob2	204°42'10"	M	393.92	M
IT 2 DP 467270	IT XLII DP 18587	ob6	230°08'50"	M	553.62	M
IT XLII DP 18587	Kaikoura GPS	ob8	20°26'14"	M	33,447.30	M
Kaikoura GPS	IT 2 DP 467270	ob1	199°57'37"	M	32,967.59	M
IT 1 DP 467270	IT XLII DP 18587	ob3	219°36'15"	M	924.95	M
IT XLII DP 18587	PEG XLIX DP 18587	ob9	247°32'35"	M	351.04	M
PEG XLIX DP 18587	IT XLVI DP 18587	ob12	86°49'00"	M	108.31	M
IT XLVI DP 18587	PEG XLV DP 18587	ob14	61°10'10"	M	25.23	M
IT XLII DP 18587	IS XXXIX DP 18587	ob10	84°46'30"	M	310.52	M
IS XXXIX DP 18587	IT XL DP 18587	ob17	232°57'00"	M	189.74	M
IT XL DP 18587	IT XLII DP 18587	ob18	298°36'00"	M	179.73	M
IT XLII DP 18587	UNMK 1 DP 467270	ob11	332°34'00"	C	4.15	C
IT 1 DP 467270	UNMK 2 DP 467270	ob4	334°16'30"	C	174.02	C
UNMK 2 DP 467270	UNMK 3 DP 467270	ob20	359°41'00"	C	27.12	C
UNMK 3 DP 467270	UNMK 4 DP 467270	ob21	337°41'00"	C	23.57	C
UNMK 4 DP 467270	UNMK 5 DP 467270	ob22	295°20'20"	C	68.64	C
UNMK 5 DP 467270	UNMK 6 DP 467270	ob23	345°39'00"	C	25.59	C
UNMK 6 DP 467270	UNMK 7 DP 467270	ob24	24°53'00"	C	57.71	C
UNMK 7 DP 467270	UNMK 8 DP 467270	ob25	348°13'00"	C	34.12	C
UNMK 8 DP 467270	UNMK 9 DP 467270	ob26	333°19'00"	C	22.03	C
UNMK 9 DP 467270	UNMK 10 DP 467270	ob27	223°12'00"	C	37.55	C
UNMK 10 DP 467270	UNMK 11 DP 467270	ob28	269°59'00"	C	11.27	C
UNMK 11 DP 467270	UNMK 12 DP 467270	ob29	255°14'00"	C	20.02	C
UNMK 12 DP 467270	UNMK 13 DP 467270	ob30	219°54'00"	C	19.25	C
UNMK 13 DP 467270	UNMK 14 DP 467270	ob31	188°46'00"	C	27.07	C
UNMK 14 DP 467270	UNMK 15 DP 467270	ob32	213°21'00"	C	33.08	C
UNMK 15 DP 467270	UNMK 16 DP 467270	ob33	244°50'00"	C	69.85	C
UNMK 16 DP 467270	UNMK 17 DP 467270	ob34	202°11'00"	C	38.56	C
UNMK 17 DP 467270	UNMK 18 DP 467270	ob35	154°31'00"	C	17.95	C
UNMK 18 DP 467270	UNMK 19 DP 467270	ob36	238°41'00"	C	34.33	C
UNMK 19 DP 467270	UNMK 20 DP 467270	ob37	203°28'00"	C	41.04	C
UNMK 20 DP 467270	UNMK 21 DP 467270	ob38	175°07'00"	C	37.05	C
UNMK 21 DP 467270	UNMK 22 DP 467270	ob39	149°53'00"	C	12.41	C
UNMK 22 DP 467270	UNMK 23 DP 467270	ob40	209°27'40"	C	58.68	C
UNMK 23 DP 467270	UNMK 24 DP 467270	ob41	183°28'00"	C	27.47	C
UNMK 24 DP 467270	UNMK 25 DP 467270	ob42	212°36'40"	C	61.64	C
UNMK 25 DP 467270	UNMK 26 DP 467270	ob43	174°50'00"	C	18.20	C

# Mark and Vector

**Survey Number** DP 467270  
**Coordinate System** Amuri 2000

From	To	Code	Bearing	Adpt Surv	Distance	Adpt Surv
UNMK 26 DP 467270	UNMK 27 DP 467270	ob44	155°45'00"	C	72.54	C
UNMK 27 DP 467270	UNMK 28 DP 467270	ob45	201°08'40"	C	79.87	C
UNMK 28 DP 467270	UNMK 29 DP 467270	ob46	228°51'40"	C	62.64	C
UNMK 29 DP 467270	UNMK 30 DP 467270	ob47	175°24'00"	C	30.92	C
UNMK 30 DP 467270	UNMK 31 DP 467270	ob48	147°28'00"	C	12.07	C
UNMK 31 DP 467270	UNMK 32 DP 467270	ob49	70°04'00"	C	41.55	C
UNMK 32 DP 467270	UNMK 95 DP 467270	ob50	164°57'00"	C	36.97	C
UNMK 95 DP 467270	UNMK 33 DP 467270	ob119	164°57'00"	C	4.37	C
UNMK 33 DP 467270	UNMK 34 DP 467270	ob51	186°52'00"	C	89.96	C
UNMK 34 DP 467270	UNMK 35 DP 467270	ob52	230°17'00"	C	29.55	C
UNMK 35 DP 467270	UNMK 36 DP 467270	ob53	193°40'00"	C	27.57	C
UNMK 36 DP 467270	UNMK 37 DP 467270	ob54	229°43'00"	C	47.16	C
UNMK 37 DP 467270	UNMK 38 DP 467270	ob55	257°41'00"	C	57.99	C
UNMK 38 DP 467270	UNMK 39 DP 467270	ob56	183°29'00"	C	36.39	C
UNMK 39 DP 467270	UNMK 40 DP 467270	ob57	272°46'00"	C	14.88	C
UNMK 40 DP 467270	UNMK 41 DP 467270	ob58	233°22'20"	C	55.76	C
UNMK 41 DP 467270	UNMK 42 DP 467270	ob59	288°11'40"	C	50.28	C
UNMK 42 DP 467270	UNMK 96 DP 467270	ob60	329°39'00"	C	2.25	C
UNMK 96 DP 467270	UNMK 43 DP 467270	ob121	329°39'00"	C	30.29	C
UNMK 43 DP 467270	UNMK 44 DP 467270	ob61	260°08'00"	C	23.41	C
UNMK 44 DP 467270	UNMK 45 DP 467270	ob62	220°39'20"	C	68.84	C
UNMK 45 DP 467270	UNMK 46 DP 467270	ob63	294°16'40"	C	92.68	C
UNMK 46 DP 467270	UNMK 47 DP 467270	ob64	223°28'00"	C	52.23	C
UNMK 47 DP 467270	UNMK 48 DP 467270	ob65	249°59'20"	C	54.22	C
UNMK 48 DP 467270	UNMK 49 DP 467270	ob66	181°39'40"	C	78.68	C
UNMK 49 DP 467270	UNMK 50 DP 467270	ob67	268°02'00"	C	21.46	C
UNMK 50 DP 467270	UNMK 51 DP 467270	ob68	243°52'00"	C	17.55	C
UNMK 51 DP 467270	UNMK 52 DP 467270	ob69	195°27'00"	C	50.34	C
UNMK 52 DP 467270	UNMK 53 DP 467270	ob70	149°58'00"	C	55.31	C
UNMK 53 DP 467270	UNMK 54 DP 467270	ob71	84°22'40"	C	117.24	C
UNMK 54 DP 467270	UNMK 55 DP 467270	ob72	81°25'00"	C	43.69	C
UNMK 55 DP 467270	UNMK 56 DP 467270	ob73	61°52'00"	C	30.77	C
UNMK 56 DP 467270	UNMK 57 DP 467270	ob74	51°21'00"	C	30.12	C
UNMK 57 DP 467270	UNMK 97 DP 467270	ob75	80°29'40"	C	70.22	C
UNMK 97 DP 467270	UNMK 1 DP 467270	ob123	80°29'40"	C	44.89	C
UNMK 1 DP 467270	UNMK 58 DP 467270	ob19	70°26'20"	C	75.27	C
UNMK 58 DP 467270	UNMK 59 DP 467270	ob76	97°46'00"	C	54.14	C
UNMK 59 DP 467270	UNMK 60 DP 467270	ob77	72°15'20"	C	66.63	C
UNMK 60 DP 467270	UNMK 61 DP 467270	ob78	46°05'00"	C	72.50	C

# Mark and Vector

**Survey Number** DP 467270  
**Coordinate System** Amuri 2000

From	To	Code	Bearing	Adpt Surv	Distance	Adpt Surv
UNMK 61 DP 467270	UNMK 62 DP 467270	ob79	11°45'40"	C	56.64	C
UNMK 62 DP 467270	UNMK 63 DP 467270	ob80	87°20'00"	C	25.10	C
UNMK 63 DP 467270	UNMK 64 DP 467270	ob81	75°23'00"	C	30.76	C
UNMK 64 DP 467270	UNMK 65 DP 467270	ob82	46°17'40"	C	55.65	C
UNMK 65 DP 467270	UNMK 66 DP 467270	ob83	28°22'00"	C	19.59	C
UNMK 66 DP 467270	UNMK 67 DP 467270	ob84	14°01'00"	C	35.43	C
UNMK 67 DP 467270	UNMK 68 DP 467270	ob85	0°38'00"	C	30.38	C
UNMK 68 DP 467270	UNMK 69 DP 467270	ob86	34°04'00"	C	21.29	C
UNMK 69 DP 467270	UNMK 70 DP 467270	ob87	69°42'00"	C	4.12	C
UNMK 70 DP 467270	UNMK 71 DP 467270	ob88	0°17'00"	C	22.58	C
UNMK 71 DP 467270	UNMK 72 DP 467270	ob89	332°35'00"	C	16.00	C
UNMK 72 DP 467270	UNMK 73 DP 467270	ob90	19°39'00"	C	9.93	C
UNMK 73 DP 467270	UNMK 74 DP 467270	ob91	323°16'00"	C	17.56	C
UNMK 74 DP 467270	UNMK 75 DP 467270	ob92	322°50'00"	C	24.30	C
UNMK 75 DP 467270	UNMK 98 DP 467270	ob93	359°24'00"	C	23.00	C
UNMK 98 DP 467270	UNMK 76 DP 467270	ob117	359°24'00"	C	3.51	C
UNMK 76 DP 467270	UNMK 77 DP 467270	ob94	330°46'00"	C	37.85	C
UNMK 77 DP 467270	UNMK 78 DP 467270	ob95	8°34'00"	C	30.40	C
UNMK 78 DP 467270	UNMK 79 DP 467270	ob96	39°48'00"	C	18.99	C
UNMK 79 DP 467270	UNMK 80 DP 467270	ob97	13°04'00"	C	16.87	C
UNMK 80 DP 467270	UNMK 81 DP 467270	ob98	65°36'00"	C	43.20	C
UNMK 81 DP 467270	UNMK 82 DP 467270	ob99	20°00'00"	C	36.28	C
UNMK 82 DP 467270	UNMK 83 DP 467270	ob100	97°22'00"	C	44.88	C
UNMK 83 DP 467270	UNMK 84 DP 467270	ob101	32°07'00"	C	3.15	C
UNMK 84 DP 467270	UNMK 85 DP 467270	ob102	355°07'00"	C	31.77	C
UNMK 85 DP 467270	UNMK 86 DP 467270	ob103	303°45'40"	C	59.06	C
UNMK 86 DP 467270	UNMK 87 DP 467270	ob104	283°23'00"	C	31.85	C
UNMK 87 DP 467270	UNMK 88 DP 467270	ob105	304°42'00"	C	27.28	C
UNMK 88 DP 467270	UNMK 89 DP 467270	ob106	4°53'00"	C	75.58	C
UNMK 89 DP 467270	UNMK 90 DP 467270	ob107	77°42'40"	C	54.03	C
UNMK 90 DP 467270	UNMK 91 DP 467270	ob108	28°05'20"	C	95.78	C
UNMK 91 DP 467270	UNMK 92 DP 467270	ob109	14°38'00"	C	45.93	C
UNMK 92 DP 467270	UNMK 93 DP 467270	ob110	75°57'00"	C	46.50	C
UNMK 93 DP 467270	UNMK 2 DP 467270	ob111	41°25'00"	C	13.21	C
PEG XLIX DP 18587	PEG XLVIII DP 18587	ob13	63°31'00"	A DP 18587	35.24	A DP 18587
PEG XLVIII DP 18587	PEG XLVII DP 18587	ob112	76°13'00"	A DP 18587	52.95	A DP 18587
PEG XLVII DP 18587	PEG XLV DP 18587	ob113	102°04'00"	A DP 18587	48.34	A DP 18587
PEG XLV DP 18587	PEG XLIV DP 18587	ob15	61°10'10"	A DP 18587	30.13	A DP 18587

# Mark and Vector

**Survey Number** DP 467270  
**Coordinate System** Amuri 2000

From	To	Code	Bearing	Adpt Surv	Distance	Adpt Surv
PEG XLIV DP 18587	PEG XLIIIA DP 18587	ob127	46°01'10"	A DP 18587	34.56	A DP 18587
PEG XLIIIA DP 18587	UNMK 99 DP 467270	ob128	88°35'50"	A DP 18587	96.81	A DP 18587
UNMK 99 DP 467270	PEG CXI DP 18587	ob125	88°35'50"	A DP 18587	54.89	A DP 18587
PEG CXI DP 18587	PEG CXII DP 18587	ob114	64°57'40"	A DP 18587	35.49	A DP 18587
PEG CXII DP 18587	PEG XLI DP 18587	ob115	58°45'00"	A DP 18587	98.55	A DP 18587
PEG XLI DP 18587	IT XL DP 18587	ob116	157°19'10"	A DP 18587	85.03	A DP 18587
UNMK 95 DP 467270	UNMK 98 DP 467270	ob120	90°00'00"	A SO 634	153.59	C
UNMK 97 DP 467270	UNMK 96 DP 467270	ob124	0°00'00"	A SO 634	169.05	C
UNMK 99 DP 467270	UNMK 97 DP 467270	ob126	0°00'00"	C	71.30	C
UNMK 98 DP 467270	UNMK SO 634	ob118	90°00'00"	A SO 634	408.86	C
UNMK 96 DP 467270	UNMK SO 634	ob122	0°00'00"	A SO 634	233.30	C
UNMK SO 634	UNMK 95 DP 467270	ob129	90°00'00"	A SO 634	242.22	C
PEG XLV DP 18587	IT XLII DP 18587	ob16	59°09'40"	M	226.10	M
IT XLII DP 18587	UNMK 43 DP 467270	ob7	342°11'40"	C	201.09	C
IT 2 DP 467270	UNMK 75 DP 467270	ob5	285°30'40"	C	77.98	C

Mark Name	Description
IS XXXIX DP 18587	down 0.10
IT 1 DP 467270	down 0.30
IT 2 DP 467270	down 0.30
IT XL DP 18587	FLUSH
IT XLII DP 18587	down 0.20
IT XLVI DP 18587	up 0.30

\*\*\* End of Report \*\*\*

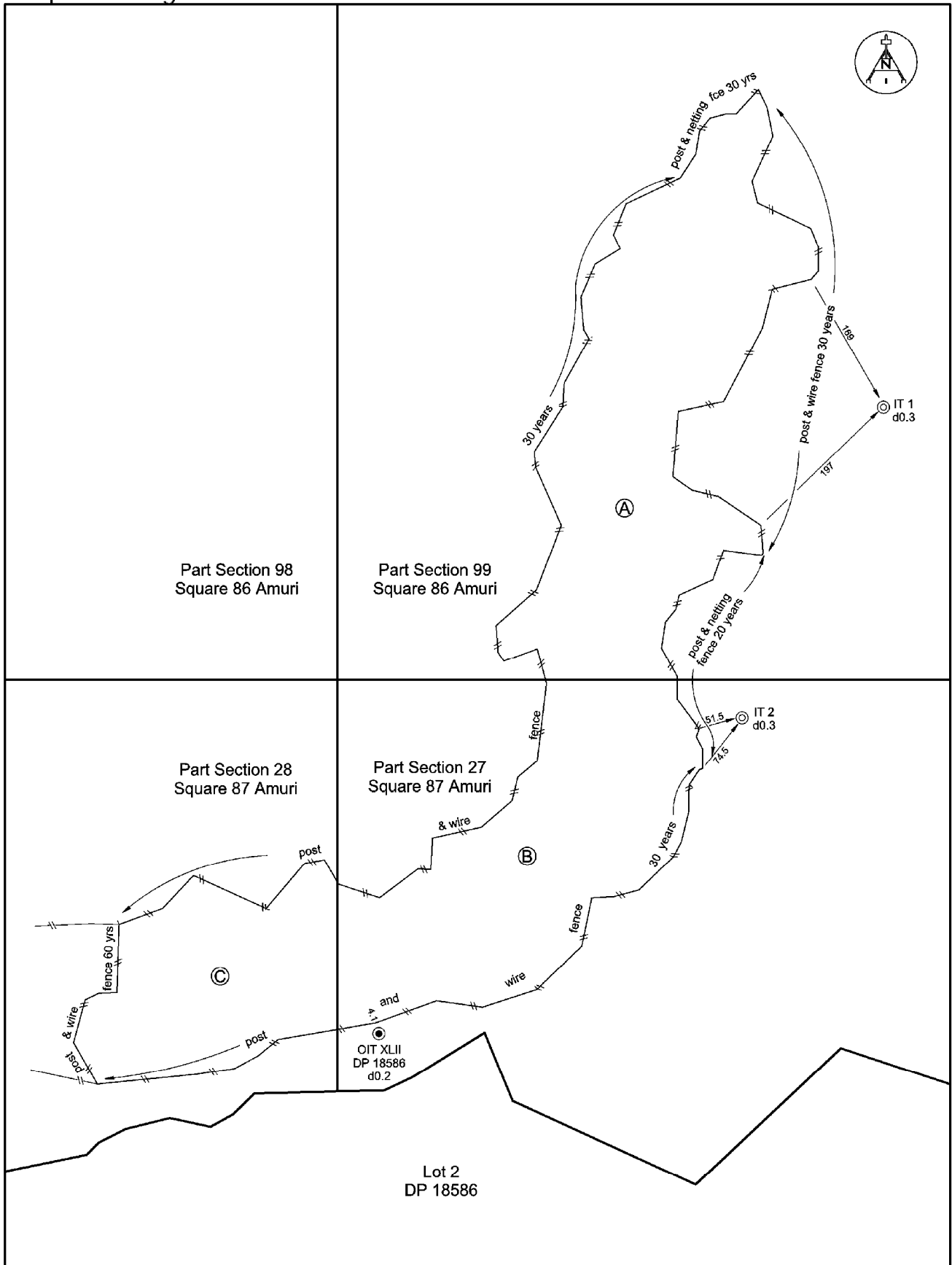


<b>Land Registration District</b>	<b>Plan Number</b>
<b>Canterbury</b>	<b>DP 467270</b>

<b>Proposed Open Space Covenant Schedule</b>			
<i>( Pursuant to QEII National Trust Act 1977)</i>			
<b>Shown</b>	<b>Description</b>	<b>Title Reference</b>	<b>Area</b>
A	<b>Part Section 99 Square 86 Amuri</b>	CFR CB31A/329 Ltd	11.7600 Ha <i>(not determined by survey)</i>
B	<b>Part Section 27 Square 87 Amuri</b>		8.9600 Ha <i>(not determined by survey)</i>
C	<b>Part Section 28 Square 87 Amuri</b>		5.3800 Ha <i>(not determined by survey)</i>

Andersen & Associates Ltd PO Box 13 343 232 Hills Road Christchurch 8141  
 Phone: +64-3-379 9901 Fax: +64-3-379 9903 Email: mail@aasurvey.co.nz

# Occupation Diagram



Date: 10 Sep 13	Scale: 1:4000 @A3
Drawn By: AL	File: Q01-12640
Land District: Canterbury	
Territorial Authority: Hurunui District	

## OCCUPATION DIAGRAM

DP 467270

**ANDERSEN & ASSOCIATES**  
 CONSULTEING ENGINEERS  
 PO Box 13-343, 232 Hills Road  
 Mairehau, Christchurch  
 Ph: (03) 379 9901 Fx: (03) 379 9903  
 Email: mail@asurvey.co.nz

p:\12640\graphics\loc\_v1.tiff





