



CSD Plan - DP 548048

Survey Number DP 548048
Surveyor Reference 10298 GS Dairy
Surveyor Ian David Gillespie
Survey Firm Lands & Survey Ltd
Surveyor Declaration I Ian David Gillespie, being a licensed cadastral surveyor, certify that:
(a) this dataset provided by me and its related survey are accurate, correct and in accordance with the Cadastral Survey Act 2002 and the Rules for Cadastral Survey 2010, and
(b) the survey was undertaken by me or under my personal direction.
Declared on 20 Oct 2020 09:32 AM

Survey Details

Dataset Description Lots 1 to 6 being a subdivision of Part Allotments 168 and 169 Parish of Māreretu and Section 13 Block IV Waipu SD.

Purpose LT Subdivision

Status	Deposited	Type	Survey
Land District	North Auckland	Survey Class	Class B
Meridional Circuit	Mount Eden 2000	Vertical Datum	None

Survey Dates

Surveyed Date	07/05/2020	Certified Date	20/10/2020
Submitted Date	20/10/2020 09:32:34	Survey Approval Date	22/10/2020
Deposit Date	06/11/2020		

Referenced Surveys

Survey Number	Land District	Bearing Correction
DP 146956	North Auckland	0°00'00"
DP 35972	North Auckland	0°00'00"
SO 11415/B	North Auckland	0°00'00"
SO 341673	North Auckland	0°00'00"
DP 534582	North Auckland	0°00'00"
SO 12542	North Auckland	0°00'00"
SO 21053	North Auckland	0°00'00"
SO 5071	North Auckland	0°00'00"
SO 64133	North Auckland	0°00'00"
DP 152602	North Auckland	0°00'00"
DP 96423	North Auckland	0°00'00"
SO 12184	North Auckland	0°00'00"
SO 15850	North Auckland	0°00'00"
SO 5028	North Auckland	0°00'00"
SO 5511	North Auckland	0°00'00"
DP 90142	North Auckland	0°00'00"
DP 32615	North Auckland	0°00'00"
DP 508657	North Auckland	0°00'00"
SO 532839	North Auckland	0°00'00"



Mark and Vector

Survey Number DP 548048
 Meridional Circuit Mount Eden 2000

From	To	Code	Bearing	Adpt Surv	Bearing Distance	Adpt Surv	Class
					Correction		
IB I DP 96423	IT I DP 90142	ob0	71°24'20"	A DP 96423	1,167.58	A DP 96423	
IT I DP 90142	1023	ob2	264°20'00"	A DP 96423	3,901.12	A DP 90142	
IB I DP 96423	IB 1 DP 548048	ob1	28°12'23"	M	406.77	M	
IB 1 DP 548048	IT I DP 90142	ob199	89°07'54"	M	914.44	M	
IB 1 DP 548048	IT XI DP 90142	ob200	318°52'10"	M	125.86	M	
IT XI DP 90142	IB 2 DP 548048	ob211	152°29'00"	M	145.41	M	
IB 2 DP 548048	IB 1 DP 548048	ob212	24°33'00"	M	37.55	M	
IT I DP 90142	IT II DP 90142	ob3	293°22'15"	A DP 90142	722.35	A DP 90142	
IT II DP 90142	IS XLV DP 90142	ob21	103°23'00"	A DP 90142	97.07	A DP 90142	
IS XLV DP 90142	IB 1 DP 548048	ob23	231°12'15"	M	443.51	M	
IB 1 DP 548048	IS XII DP 90142	ob201	280°32'50"	M	188.27	M	
IS XII DP 90142	IT XI DP 90142	ob217	59°28'00"	A DP 90142	118.77	A DP 90142	
IT I DP 90142	IT XLIX DP 90142	ob4	321°35'15"	A DP 90142	976.05	A DP 90142	
IT XLIX DP 90142	IT D SO 21053	ob8	104°25'10"	A DP 90142	1,660.54	A DP 90142	
IT D SO 21053	IT I DP 90142	ob9	250°40'25"	A DP 90142	1,061.63	A DP 90142	
IT II DP 90142	IS VI DP 90142	ob22	255°23'00"	A DP 90142	67.44	A DP 90142	
IS VI DP 90142	IS VII DP 90142	ob14	228°25'00"	A DP 90142	33.90	A DP 90142	
IS VII DP 90142	IS VIII DP 90142	ob16	259°26'00"	A DP 90142	34.87	A DP 90142	
IS VIII DP 90142	IT IX DP 90142	ob17	243°58'00"	A DP 90142	64.22	A DP 90142	
IT IX DP 90142	IS X DP 90142	ob18	226°19'00"	A DP 90142	79.15	A DP 90142	
IS X DP 90142	IT XI DP 90142	ob19	230°49'00"	A DP 90142	121.49	A DP 90142	
IS XII DP 90142	IS XIII DP 90142	ob218	266°52'00"	A DP 90142	45.81	A DP 90142	
IS XIII DP 90142	IT III DP 90142	ob25	285°37'00"	A DP 90142	39.94	A DP 90142	
IT III DP 90142	IT XIV DP 90142	ob26	322°46'00"	A DP 90142	42.97	A DP 90142	
IT XIV DP 90142	IS XV DP 90142	ob27	282°13'00"	A DP 90142	39.20	A DP 90142	
IS XV DP 90142	IS XVI DP 90142	ob28	260°17'00"	A DP 90142	49.53	A DP 90142	
IS XVI DP 90142	IS XVII DP 90142	ob29	212°33'00"	A DP 90142	52.58	A DP 90142	
IS XVII DP 90142	IT XVIII DP 90142	ob30	221°29'00"	A DP 90142	39.95	A DP 90142	
IT XVIII DP 90142	IS XIX DP 90142	ob31	251°12'00"	A DP 90142	49.80	A DP 90142	
IS XIX DP 90142	IT XX DP 90142	ob32	256°45'00"	A DP 90142	73.26	A DP 90142	
IT XX DP 90142	IS XXI DP 90142	ob33	276°55'00"	A DP 90142	77.37	A DP 90142	
IS XXI DP 90142	IS XXII DP 90142	ob34	347°34'00"	A DP 90142	46.85	A DP 90142	



Mark and Vector

Survey Number DP 548048
 Meridional Circuit Mount Eden 2000

From	To	Code	Bearing	Adpt Surv	Bearing Distance	Adpt Surv	Class
IS XXII DP 90142	IS XXIII DP 90142	ob35	8°05'00"	A DP 90142	35.64 A	DP 90142	
IS XXIII DP 90142	IT XXIV DP 90142	ob36	327°14'00"	A DP 90142	22.06 A	DP 90142	
IT XXIV DP 90142	IS XXV DP 90142	ob37	94°12'00"	A DP 90142	45.84 A	DP 90142	
IS XXV DP 90142	IS XXVI DP 90142	ob39	77°59'00"	A DP 90142	27.90 A	DP 90142	
IS XXVI DP 90142	IT XXVII DP 90142	ob40	107°37'00"	A DP 90142	39.18 A	DP 90142	
IT XXVII DP 90142	1023	ob41	259°42'55"	A DP 90142	2,468.16 A	DP 90142	
IS XLV DP 90142	IT XLIV DP 90142	ob24	51°15'00"	A DP 90142	86.95 A	DP 90142	
IT XLIV DP 90142	IT V DP 90142	ob11	305°37'00"	A DP 90142	42.27 A	DP 90142	
IT V DP 90142	IS IV DP 90142	ob12	255°03'00"	A DP 90142	51.19 A	DP 90142	
IS IV DP 90142	IT II DP 90142	ob13	241°03'30"	A DP 90142	89.63 A	DP 90142	
IS LI DP 90142	IT V DP 90142	ob42	218°34'00"	A DP 90142	10.29 A	DP 90142	
IS X DP 90142	POST (15) DP 90142	ob20	14°01'00"	A DP 90142	11.37 A	DP 90142	
POST (15) DP 90142	POST (21) DP 90142	ob43	198°35'00"	A DP 90142	15.27 A	DP 90142	Class B
POST (21) DP 90142	IS X DP 90142	ob45	31°34'00"	A DP 90142	4.04 A	DP 90142	
POST (15) DP 90142	POST (17) DP 90142	ob44	50°43'00"	A DP 90142	71.70 A	DP 90142	Class B
POST (17) DP 90142	POST (18) DP 90142	ob48	64°10'00"	A DP 90142	61.79 A	DP 90142	Class B
POST (18) DP 90142	POST (16) DP 90142	ob49	81°03'00"	A DP 90142	33.99 A	DP 90142	Class B
POST (16) DP 90142	IS VII DP 90142	ob50	71°32'00"	A DP 90142	1.89 A	DP 90142	
IS VI DP 90142	PEG (8) DP 90142	ob15	72°54'00"	A DP 90142	21.04 A	DP 90142	
PEG (8) DP 90142	PEG (9) DP 90142	ob52	37°00'00"	A DP 90142	6.63 A	DP 90142	Class B
PEG (9) DP 90142	PEG XLVI DP 90142	ob53	73°00'00"	A DP 90142	72.18 A	DP 90142	Class B
PEG XLVI DP 90142	PEG (5) DP 90142	ob54	31°00'00"	A DP 90142	44.55 A	DP 90142	Class B
PEG (5) DP 90142	PEG (11) DP 90142	ob55	80°00'00"	A DP 90142	85.89 A	DP 90142	Class B
PEG (11) DP 90142	IS LI DP 90142	ob56	195°21'00"	A DP 90142	4.19 A	DP 90142	
IT I DP 90142	IT LVII DP 90142	ob5	229°17'40"	A DP 90142	717.27 A	DP 90142	



Mark and Vector

Survey Number DP 548048
 Meridional Circuit Mount Eden 2000

From	To	Code	Bearing	Adpt Surv	Bearing Distance	Adpt Surv Class
IT LVII DP 90142	IT LVI DP 90142	ob10	133°06'30"	A DP 90142	297.16 A	DP 90142
IT LVI DP 90142	IT I DP 90142	ob76	25°58'20"	A DP 90142	746.22 A	DP 90142
PEG (1) DP 90142	PEG SO 11415/A1	ob57	169°53'00"	A DP 90142	63.45 A	DP 90142
PEG SO 11415/A1	PEG XI SO 21053	ob59	226°16'00"	A SO 21053	47.01 A	SO 21053
PEG XI SO 21053	PEG CXII SO 21053	ob61	196°26'00"	A SO 21053	40.88 A	SO 21053
PEG CXII SO 21053	PEG XIII SO 21053	ob62	232°33'00"	A SO 21053	65.78 A	SO 21053
PEG XIII SO 21053	PEG XIV SO 21053	ob63	274°10'00"	A SO 21053	41.28 A	SO 21053
PEG XIV SO 21053	PEG XV SO 21053	ob64	207°24'00"	A SO 21053	106.12 A	SO 21053
PEG XV SO 21053	PEG XVI SO 21053	ob65	237°46'00"	A SO 21053	44.54 A	SO 21053
PEG XVI SO 21053	PEG XVII SO 21053	ob66	266°54'00"	A SO 21053	42.93 A	SO 21053
PEG XVII SO 21053	PEG XVIII SO 21053	ob67	223°50'00"	A SO 21053	162.12 A	SO 21053
PEG XVIII SO 21053	PEG XIX SO 21053	ob68	205°44'00"	A SO 21053	50.19 A	SO 21053
PEG XIX SO 21053	PEG XX SO 21053	ob70	198°33'00"	A SO 21053	104.69 A	SO 21053
PEG XX SO 21053	PEG TXLIX SO 21053	ob71	115°01'00"	A SO 21053	55.66 A	SO 21053
PEG TXLIX SO 21053	PEG TXLVIII SO 21053	ob73	111°32'00"	A SO 21053	238.36 A	SO 21053
PEG TXLVIII SO 21053	PEG (1) DP 90142	ob74	139°52'00"	A SO 21053	210.12 A	SO 21053
PEG (1) DP 90142	IT LVII DP 90142	ob75	25°10'00"	A DP 90142	1.77 A	DP 90142
IT XXIV DP 90142	IT XXVIII DP 90142	ob38	293°46'00"	A DP 90142	105.06 A	DP 90142
IT XXVIII DP 90142	IS XXIX DP 90142	ob77	327°10'00"	A DP 90142	66.00 A	DP 90142
IS XXIX DP 90142	IS XXX DP 90142	ob78	337°12'30"	A DP 90142	69.19 A	DP 90142
IS XXX DP 90142	IT XXI DP 90142	ob79	315°10'00"	A DP 90142	91.23 A	DP 90142
IT XXI DP 90142	IS XXXII DP 90142	ob80	341°55'00"	A DP 90142	89.44 A	DP 90142
IS XXXII DP 90142	IT XXXIII DP 90142	ob81	348°01'00"	A DP 90142	42.00 A	DP 90142
IT XXXIII DP 90142	IT XXXIV DP 90142	ob82	326°51'00"	A DP 90142	64.67 A	DP 90142



Mark and Vector

Survey Number DP 548048
 Meridional Circuit Mount Eden 2000

From	To	Code	Bearing	Adpt Surv	Bearing Correction	Distance	Adpt Surv	Class
IT XXXIV DP 90142	IS XXXV DP 90142	ob83	352°53'00"	A DP 90142		59.04 A	DP 90142	
IS XXXV DP 90142	IT XXXVI DP 90142	ob84	346°02'00"	A DP 90142		49.86 A	DP 90142	
IT XXXVI DP 90142	IT XXXVII DP 90142	ob85	202°23'00"	A DP 90142		377.68 A	DP 90142	
IT XXXVII DP 90142	1023	ob86	251°43'25"	A DP 90142		1,958.96 A	DP 90142	
POST (21) DP 90142	POST (19) DP 90142	ob46	232°58'30"	A DP 90142		114.91 A	DP 90142	Class B
POST (19) DP 90142	POST (12) DP 90142	ob87	238°18'30"	A DP 90142		118.34 A	DP 90142	Class B
POST (12) DP 90142	POST (13) DP 90142	ob88	261°42'00"	A DP 90142		46.07 A	DP 90142	Class B
POST (13) DP 90142	POST (5) DP 90142	ob89	286°26'00"	A DP 90142		40.91 A	DP 90142	Class B
POST (5) DP 90142	POST (1) DP 90142	ob90	328°12'00"	A DP 90142		27.72 A	DP 90142	Class B
POST (1) DP 90142	POST (7) DP 90142	ob91	303°53'00"	A DP 90142		41.57 A	DP 90142	Class B
POST (7) DP 90142	POST (24) DP 90142	ob92	256°39'00"	A DP 90142		65.28 A	DP 90142	Class B
POST (24) DP 90142	POST (9) DP 90142	ob93	220°56'00"	A DP 90142		98.77 A	DP 90142	Class B
POST (9) DP 90142	POST (10) DP 90142	ob94	255°23'30"	A DP 90142		112.52 A	DP 90142	Class B
POST (10) DP 90142	POST (11) DP 90142	ob95	276°41'00"	A DP 90142		81.07 A	DP 90142	Class B
POST (11) DP 90142	POST (8) DP 90142	ob96	348°37'00"	A DP 90142		44.13 A	DP 90142	Class B
POST (8) DP 90142	POST (2) DP 90142	ob97	6°45'00"	A DP 90142		37.28 A	DP 90142	Class B
POST (2) DP 90142	POST (22) DP 90142	ob98	328°51'00"	A DP 90142		17.20 A	DP 90142	Class B
POST (22) DP 90142	PEG (4) DP 90142	ob99	296°17'00"	A DP 90142		6.00 A	DP 90142	Class B
PEG (4) DP 90142	IT XXIV DP 90142	ob100	72°29'00"	A DP 90142		4.09 A	DP 90142	
PEG (4) DP 90142	POST (27) DP 90142	ob101	296°17'00"	A DP 90142		101.77 C		Class B
POST (27) DP 90142	POST (25) DP 90142	ob102	321°51'00"	A DP 90142		56.86 A	DP 90142	Class B
POST (25) DP 90142	POST (26) DP 90142	ob103	337°54'00"	A DP 90142		44.16 A	DP 90142	Class B
POST (26) DP 90142	POST (6) DP 90142	ob104	337°54'00"	A DP 90142		29.57 A	DP 90142	Class B
POST (6) DP 90142	POST (4) DP 90142	ob105	324°28'00"	A DP 90142		27.78 A	DP 90142	Class B



Mark and Vector

Survey Number DP 548048
 Meridional Circuit Mount Eden 2000

From	To	Code	Bearing	Adpt Surv	Bearing Distance Correction	Adpt Surv	Class
POST (4) DP 90142	POST (20) DP 90142	ob106	316°35'00"	A DP 90142	63.30 A	DP 90142	Class B
POST (20) DP 90142	POST (14) DP 90142	ob107	332°17'00"	A DP 90142	35.79 A	DP 90142	Class B
POST (14) DP 90142	POST (3) DP 90142	ob108	345°54'00"	A DP 90142	150.03 A	DP 90142	Class B
POST (3) DP 90142	POST (23) DP 90142	ob109	325°09'00"	A DP 90142	46.37 A	DP 90142	Class B
POST (23) DP 90142	PEG (7) DP 90142	ob110	346°10'00"	A DP 90142	56.40 A	DP 90142	Class B
PEG (7) DP 90142	IT XXXVI DP 90142	ob111	349°14'00"	A DP 90142	18.68 A	DP 90142	
PEG (7) DP 90142	PEG (10) DP 90142	ob112	259°52'00"	A DP 90142	57.56 A	DP 90142	Class B
PEG XVIII SO 21053	PEG 7 DP 548048	ob69	304°47'00"	C	10.19 C		
PEG 7 DP 548048	PEG 8 DP 548048	ob114	43°50'00"	A SO 21053	48.10 C		Class B
PEG 8 DP 548048	PEG 9 DP 548048	ob222	43°50'00"	A SO 21053	119.59 C		Class B
PEG 9 DP 548048	PEG XVII SO 21053	ob115	155°22'00"	C	10.81 C		
PEG SO 11415/A1	PEG (4) SO 21053	ob60	311°40'00"	C	10.09 C		
PEG (4) SO 21053	PEG (3) SO 21053	ob117	226°16'00"	A SO 21053	48.88 A	SO 21053	Class B
PEG (3) SO 21053	PEG XI SO 21053	ob119	121°21'00"	C	10.41 C		
PEG (4) SO 21053	PEG (5) SO 21053	ob118	37°04'00"	A SO 21053	41.86 A	SO 21053	Class B
PEG (5) SO 21053	PEG X SO 21053	ob120	159°35'30"	C	11.93 C		
PEG X SO 21053	PEG SO 11415/A1	ob121	217°04'00"	A SO 21053	36.25 A	SO 21053	
PEG 9 DP 548048	PEG (8) SO 21053	ob116	86°54'00"	A SO 21053	44.28 A	SO 21053	Class B
PEG (8) SO 21053	PEG (9) SO 21053	ob122	57°46'00"	A SO 21053	39.21 A	SO 21053	Class B
PEG (9) SO 21053	PEG (14) SO 21053	ob123	27°24'00"	A SO 21053	110.02 A	SO 21053	Class B
PEG (14) SO 21053	PEG (12) SO 21053	ob124	94°10'00"	A SO 21053	44.08 A	SO 21053	Class B
PEG (12) SO 21053	PEG (2) SO 21053	ob125	52°33'00"	A SO 21053	58.68 A	SO 21053	Class B
PEG (2) SO 21053	PEG (3) SO 21053	ob126	16°26'00"	A SO 21053	40.27 A	SO 21053	Class B
PEG XX SO 21053	PEG (21) SO 21053	ob72	305°53'30"	C	10.54 C		



Mark and Vector

Survey Number DP 548048
Meridional Circuit Mount Eden 2000

From	To	Code	Bearing	Adpt Surv	Bearing Distance Correction	Adpt Surv	Class
PEG (21) SO 21053	UNMK (1) SO 21053	ob128	18°33'00"	A SO 21053	76.44	A SO 21053	
UNMK (1) SO 21053	UNMK 52 DP 548048	ob129	18°33'00"	A SO 21053	15.71	C	Class B
UNMK 52 DP 548048	PEG (20) SO 21053	ob250	18°33'00"	A SO 21053	10.04	C	Class B
PEG (20) SO 21053	PEG 7 DP 548048	ob127	25°44'00"	A SO 21053	52.42	A SO 21053	Class B
1023	IT D SO 21053	ob6	81°25'20"	A DP 90142	4,938.93	A DP 90142	
1023	1023 NO 2	ob7	108°59'00"	A SO 64133	1.74	A SO 64133	
PEG (10) DP 90142	PEG (6) SO 5511	ob113	162°25'00"	A SO 5511	95.37	A SO 5511	Class B
PEG (6) SO 5511	PEG (17) SO 5511	ob130	146°07'00"	A SO 5511	60.67	A SO 5511	Class B
PEG (17) SO 5511	PEG (15) SO 5511	ob131	158°35'00"	A SO 5511	26.23	A SO 5511	Class B
PEG (15) SO 5511	PEG (33) SO 5511	ob132	148°16'00"	A SO 5511	68.04	A SO 5511	Class B
PEG (33) SO 5511	PEG (31) SO 5511	ob133	179°57'00"	A SO 5511	68.96	A SO 5511	Class B
PEG (31) SO 5511	PEG (12) SO 5511	ob134	218°27'00"	A SO 5511	52.95	A SO 5511	Class B
PEG (12) SO 5511	PEG (4) SO 5511	ob135	198°37'00"	A SO 5511	53.43	A SO 5511	Class B
PEG (4) SO 5511	PEG (32) SO 5511	ob136	218°51'00"	A SO 5511	39.05	A SO 5511	Class B
PEG (32) SO 5511	PEG (16) SO 5511	ob137	194°19'00"	A SO 5511	55.38	A SO 5511	Class B
PEG (16) SO 5511	PEG (19) SO 5511	ob138	157°17'00"	A SO 5511	34.70	A SO 5511	Class B
PEG (19) SO 5511	PEG (2) SO 5511	ob139	178°04'00"	A SO 5511	51.94	A SO 5511	Class B
PEG (2) SO 5511	PEG (1) SO 5511	ob140	202°44'00"	A SO 5511	58.64	A SO 5511	Class B
PEG (1) SO 5511	PEG (21) SO 5511	ob141	121°57'00"	A SO 5511	54.88	A SO 5511	Class B
PEG (21) SO 5511	PEG (28) SO 5511	ob142	164°16'00"	A SO 5511	24.14	A SO 5511	Class B
PEG (28) SO 5511	PEG (20) SO 5511	ob143	91°27'00"	A SO 5511	80.63	A SO 5511	Class B
PEG (45) SO 5511	PEG (3) SO 5511	ob145	271°27'00"	A SO 5511	86.50	A SO 5511	
PEG (29) SO 5511	PEG (38) SO 5511	ob147	23°21'00"	A SO 5511	32.25	A SO 5511	Class B
PEG (38) SO 5511	PEG (8) SO 5511	ob150	50°37'00"	A SO 5511	60.43	A SO 5511	Class B
PEG (8) SO 5511	PEG (7) SO 5511	ob151	80°53'00"	A SO 5511	43.94	A SO 5511	Class B



Mark and Vector

Survey Number DP 548048
 Meridional Circuit Mount Eden 2000

From	To	Code	Bearing	Adpt Surv	Bearing Distance Correction	Adpt Surv	Class
PEG (7) SO 5511	PEG (41) SO 5511	ob152	91°27'00"	A SO 5511	84.05 C		Class B
PEG (41) SO 5511	PEG (45) SO 5511	ob153	10°05'00"	C	10.17 C		
PEG (20) SO 5511	UNMK (2) SO 5511	ob144	108°43'00"	A SO 5511	29.47 C		Class B
PEG (41) SO 5511	UNMK (1) SO 5511	ob154	108°43'00"	A SO 5511	22.68 C		Class B
PEG (29) SO 5511	PEG (36) SO 5511	ob148	181°28'00"	A SO 5511	37.10 C		Class B
PEG (36) SO 5511	UNMK (4) SO 5511	ob149	181°28'00"	A SO 5511	11.06 A SO 5511		Class B
POST (16) DP 90142	PEG (3) DP 90142	ob51	37°00'00"	A DP 90142	65.00 A DP 90142		
PEG (3) DP 90142	PEG (6) DP 90142	ob157	73°00'00"	A DP 90142	71.00 A DP 90142		
PEG (6) DP 90142	PEG (12) DP 90142	ob158	31°00'00"	A DP 90142	46.00 A DP 90142		
PEG (12) DP 90142	PEG (2) DP 90142	ob159	80°00'00"	A DP 90142	95.06 A DP 90142		
UNMK (2) SO 5511	UNMK 10 DP 548048	ob155	129°48'00"	C	82.72 C		Class B
UNMK 10 DP 548048	UNMK 8 DP 548048	ob160	97°40'00"	C	33.56 C		Class B
UNMK 8 DP 548048	UNMK 6 DP 548048	ob161	55°51'30"	C	84.06 C		Class B
UNMK 6 DP 548048	UNMK 1 DP 548048	ob162	90°46'00"	C	54.48 C		Class B
UNMK 1 DP 548048	UNMK 2 DP 548048	ob163	110°01'00"	C	56.09 C		Class B
UNMK 2 DP 548048	UNMK 9 DP 548048	ob164	144°21'30"	C	64.45 C		Class B
UNMK 9 DP 548048	UNMK 7 DP 548048	ob165	82°55'00"	C	61.98 C		Class B
UNMK 7 DP 548048	UNMK 36 DP 548048	ob166	124°27'00"	C	35.66 C		Class B
UNMK 36 DP 548048	UNMK 34 DP 548048	ob167	80°44'00"	C	25.98 C		Class B
UNMK 34 DP 548048	UNMK 35 DP 548048	ob168	35°52'00"	C	82.92 C		Class B
UNMK 35 DP 548048	UNMK 22 DP 548048	ob169	81°55'00"	C	58.47 C		Class B
UNMK 22 DP 548048	UNMK 37 DP 548048	ob170	12°29'00"	C	35.74 C		Class B
UNMK 37 DP 548048	UNMK 38 DP 548048	ob171	44°31'00"	C	42.79 C		Class B
UNMK 38 DP 548048	UNMK 3 DP 548048	ob172	79°40'30"	C	95.18 C		Class B



Mark and Vector

Survey Number DP 548048
 Meridional Circuit Mount Eden 2000

From	To	Code	Bearing	Adpt Surv	Bearing Distance Correction	Adpt Surv	Class
UNMK 3 DP 548048	UNMK 12 DP 548048	ob173	56°15'00" C		85.04 C		Class B
UNMK 12 DP 548048	UNMK 13 DP 548048	ob174	23°31'30" C		88.18 C		Class B
UNMK 13 DP 548048	UNMK 20 DP 548048	ob175	59°44'30" C		78.23 C		Class B
UNMK 20 DP 548048	PEG 6 DP 548048	ob176	46°20'00" C		33.37 C		Class B
PEG 6 DP 548048	UNMK 15 DP 548048	ob229	46°20'00" C		50.38 C		Class B
UNMK 15 DP 548048	UNMK 16 DP 548048	ob177	64°29'00" C		80.80 C		Class B
UNMK 16 DP 548048	POST (16) DP 90142	ob178	37°00'00" C		49.15 C		Class B
UNMK (1) SO 5511	UNMK 14 DP 548048	ob156	129°48'00" C		84.77 C		Class B
UNMK 14 DP 548048	UNMK 21 DP 548048	ob179	97°40'00" C		47.04 C		Class B
UNMK 21 DP 548048	UNMK 11 DP 548048	ob180	55°51'30" C		85.42 C		Class B
UNMK 11 DP 548048	UNMK 4 DP 548048	ob181	90°46'00" C		44.74 C		Class B
UNMK 4 DP 548048	UNMK 5 DP 548048	ob182	110°01'00" C		46.46 C		Class B
UNMK 5 DP 548048	UNMK 19 DP 548048	ob183	144°21'30" C		70.19 C		Class B
UNMK 19 DP 548048	UNMK 17 DP 548048	ob184	82°55'00" C		66.31 C		Class B
UNMK 17 DP 548048	UNMK 18 DP 548048	ob185	124°27'00" C		36.11 C		Class B
UNMK 18 DP 548048	UNMK 42 DP 548048	ob186	80°44'00" C		42.36 C		Class B
UNMK 42 DP 548048	UNMK 32 DP 548048	ob187	35°52'00" C		82.68 C		Class B
UNMK 32 DP 548048	UNMK 30 DP 548048	ob188	81°55'00" C		63.86 C		Class B
UNMK 30 DP 548048	UNMK 31 DP 548048	ob189	12°29'00" C		43.91 C		Class B
UNMK 31 DP 548048	UNMK 23 DP 548048	ob190	44°31'00" C		30.64 C		Class B
UNMK 23 DP 548048	UNMK 24 DP 548048	ob191	79°40'30" C		92.98 C		Class B
UNMK 24 DP 548048	UNMK 28 DP 548048	ob192	56°15'00" C		95.12 C		Class B
UNMK 28 DP 548048	UNMK 29 DP 548048	ob193	23°31'30" C		87.51 C		Class B
UNMK 29 DP 548048	UNMK 25 DP 548048	ob194	59°44'30" C		74.01 C		Class B



Mark and Vector

Survey Number DP 548048
 Meridional Circuit Mount Eden 2000

From	To	Code	Bearing	Adpt Surv	Bearing Distance Correction	Class
UNMK 25 DP 548048	PEG 5 DP 548048	ob195	46°20'00" C		22.37 C	Class B
PEG 5 DP 548048	UNMK 39 DP 548048	ob230	46°20'00" C		60.53 C	Class B
UNMK 39 DP 548048	UNMK 41 DP 548048	ob196	64°29'00" C		82.50 C	Class B
UNMK 41 DP 548048	PEG (8) DP 90142	ob197	37°00'00" C		105.91 C	Class B
IB 2 DP 548048	IS XII DP 90142	ob213	292°02'20" M		182.84 M	
IB 1 DP 548048	PEG 8 DP 548048	ob202	88°29'00" M		42.25 M	
IB 1 DP 548048	PEG 9 DP 548048	ob203	55°03'20" M		152.55 M	
IB 1 DP 548048	PEG 7 DP 548048	ob204	165°07'00" M		34.75 M	
IB 2 DP 548048	PEG 8 DP 548048	ob214	58°36'30" M		67.75 M	
IB 2 DP 548048	PEG 9 DP 548048	ob215	49°10'40" M		185.86 M	
IB 2 DP 548048	PEG 7 DP 548048	ob216	88°40'00" M		24.50 M	
IB 1 DP 548048	POST (21) DP 90142	ob205	3°09'40" M		168.38 M	
IB 1 DP 548048	POST 1 DP 548048	ob206	60°14'00" M		31.44 M	
POST 1 DP 548048	IB 2 DP 548048	ob219	220°46'00" M		65.68 M	
IB 1 DP 548048	PEG 2 DP 548048	ob207	46°52'00" M		34.10 M	
PEG 2 DP 548048	IB 2 DP 548048	ob223	215°10'30" M		70.30 M	
IB 1 DP 548048	PEG 3 DP 548048	ob208	36°01'00" M		39.05 M	
PEG 3 DP 548048	IB 2 DP 548048	ob224	210°24'30" M		76.22 M	
IB 1 DP 548048	PEG 4 DP 548048	ob209	11°31'30" M		67.02 M	
PEG 4 DP 548048	IB 2 DP 548048	ob227	196°12'20" M		103.95 M	
POST 1 DP 548048	PEG 8 DP 548048	ob220	134°07'00" C		20.82 C	Class B
POST 1 DP 548048	PEG 2 DP 548048	ob221	342°42'00" C		8.07 C	Class B
PEG 3 DP 548048	UNMK 26 DP 548048	ob225	344°19'00" C		0.57 C	
UNMK 26 DP 548048	PEG 4 DP 548048	ob232	344°19'00" C		34.83 C	Class B



Mark and Vector

Survey Number DP 548048
 Meridional Circuit Mount Eden 2000

From	To	Code	Bearing	Adpt Surv	Bearing Distance Correction	Adpt Surv	Class
PEG 3 DP 548048	UNMK 27 DP 548048	ob226	166°55'00" C		5.59 C		
UNMK 27 DP 548048	UNMK 33 DP 548048	ob234	166°55'00" C		2.38 C		Class B
UNMK 33 DP 548048	PEG 2 DP 548048	ob231	166°55'00" C		0.52 C		Class B
POST (21) DP 90142	PEG 6 DP 548048	ob47	147°36'00" C		19.81 C		Class B
PEG 4 DP 548048	PEG 5 DP 548048	ob228	9°50'00" C		62.86 C		Class B
IB 1 DP 548048	PEG 5 DP 548048	ob210	10°42'20" M		129.87 M		
PEG (11) DP 90142	UNMK SO 5511	ob58	169°53'00" A	DP 90142	28.45 A	DP 90142	Class B
UNMK SO 5511	PEG SO 11415/A1	ob235	169°53'00" A	DP 90142	35.00 C		
UNMK SO 5511	UNMK 61 DP 548048	ob236	239°16'40" C		162.44 C		
UNMK 61 DP 548048	UNMK 57 DP 548048	ob237	241°05'00" C		34.81 C		
UNMK 57 DP 548048	UNMK 59 DP 548048	ob238	256°19'00" C		29.55 C		
UNMK 59 DP 548048	UNMK 60 DP 548048	ob239	237°49'00" C		17.19 C		
UNMK 60 DP 548048	UNMK 56 DP 548048	ob240	238°31'30" C		89.43 C		
UNMK 56 DP 548048	UNMK 58 DP 548048	ob241	187°13'00" C		35.06 C		
UNMK 58 DP 548048	UNMK 53 DP 548048	ob242	229°02'00" C		7.14 C		
UNMK 53 DP 548048	UNMK 54 DP 548048	ob243	169°05'00" C		31.50 C		
UNMK 54 DP 548048	UNMK 43 DP 548048	ob244	218°11'30" C		51.27 C		
UNMK 43 DP 548048	UNMK 44 DP 548048	ob245	213°00'00" C		28.97 C		
UNMK 44 DP 548048	UNMK 33 DP 548048	ob246	233°00'00" C		32.51 C		
UNMK 26 DP 548048	UNMK 55 DP 548048	ob233	268°08'00" C		5.58 C		
UNMK 55 DP 548048	UNMK 50 DP 548048	ob247	251°50'00" C		35.84 C		
UNMK 50 DP 548048	UNMK 51 DP 548048	ob248	192°13'00" C		67.54 C		
UNMK 51 DP 548048	UNMK 52 DP 548048	ob249	162°39'00" C		47.25 C		
UNMK 52 DP 548048	UNMK 49 DP 548048	ob251	231°02'00" C		33.59 C		



Mark and Vector

Survey Number DP 548048
 Meridional Circuit Mount Eden 2000

From	To	Code	Bearing	Adpt Surv	Bearing Distance Correction	Adpt Surv Class
UNMK 49 DP 548048	UNMK 40 DP 548048	ob252	229°57'00" C		95.96 C	
UNMK 40 DP 548048	UNMK 65 DP 548048	ob253	213°40'00" C		67.47 C	
UNMK 65 DP 548048	UNMK 66 DP 548048	ob254	234°57'30" C		67.79 C	
UNMK 66 DP 548048	UNMK 63 DP 548048	ob255	241°38'30" C		88.47 C	
UNMK 63 DP 548048	UNMK 64 DP 548048	ob256	232°16'20" C		149.85 C	
UNMK 64 DP 548048	UNMK 48 DP 548048	ob257	209°54'30" C		104.42 C	
UNMK 48 DP 548048	UNMK 45 DP 548048	ob258	246°37'30" C		59.02 C	
UNMK 45 DP 548048	UNMK 46 DP 548048	ob259	237°19'00" C		101.10 C	
UNMK 46 DP 548048	UNMK 47 DP 548048	ob260	232°26'00" C		91.22 C	
UNMK 47 DP 548048	UNMK (4) SO 5511	ob261	314°37'36" C		552.82 C	
PEG (3) SO 5511	PEG (7) SO 5511	ob146	176°10'00" C		10.10 C	
IB 1 DP 548048	IS 3 DP 548048	ob198	8°46'20" M		147.23 M	
IS 3 DP 548048	IB 2 DP 548048	ob262	191°57'40" M		183.65 M	
IS 3 DP 548048	PEG 6 DP 548048	ob263	336°29'00" M		6.42 M	
IS 3 DP 548048	PEG 5 DP 548048	ob264	174°40'00" M		17.98 M	
IP Y DP 32615	1023 NO 2	ob265	280°56'35" A DP 96423		1,501.15 A DP 96423	
IP Y DP 32615	IB 3 SO 341673	ob266	357°29'09" A SO 341673		1,242.06 A SO 341673	
IB 3 SO 341673	IB 2 DP 534582	ob267	165°19'09" A DP 534582		439.87 A DP 534582	
IB 2 DP 534582	IB 1 DP 534582	ob268	233°13'45" A DP 534582		83.79 A DP 534582	
LOL	UNMK (4) SO 5511	ob269	330°53'24.1" P		105.304 P	
LOL	Added for irreg line maintenance	ob270	343°41'30.6" P		1.786 P	
LOL	UNMK 47 DP 548048	ob271	130°53'30.6" P		452.735 P	
LOL	Added for irreg line maintenance	ob272	165°00'26.9" P		58.185 P	
LOL	Added for irreg line maintenance	ob273	134°09'03.2" P		379.251 P	
LOL	LOL	ob274	344°53'11.2" P		59.613 P	
LOL	UNMK 47 DP 548048	ob275	126°10'02.9" P		404.685 P	
LOL	Added for irreg line maintenance	ob276	339°58'13.4" P		1.434 P	



Mark and Vector

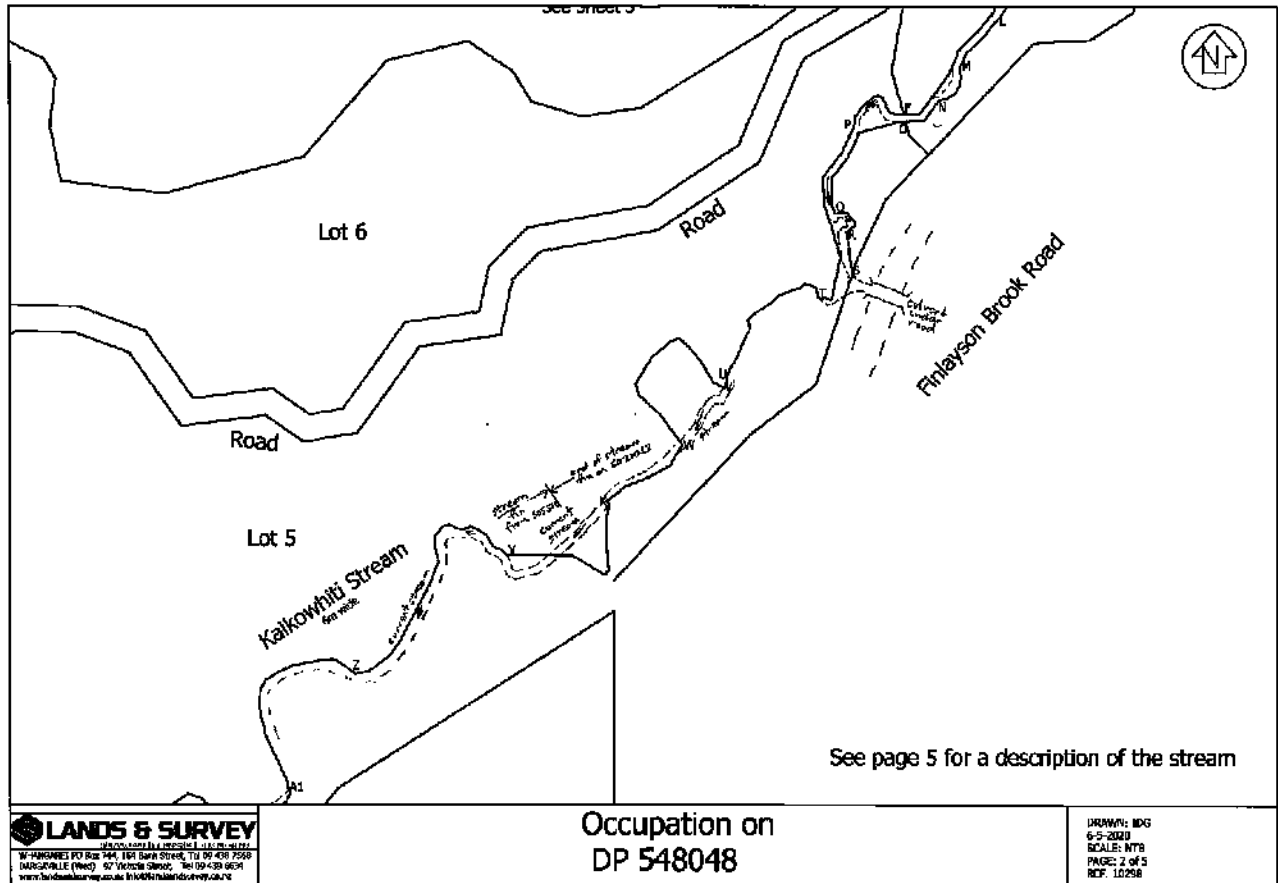
Survey Number DP 548048
 Meridional Circuit Mount Eden 2000

From	To	Code	Bearing	Adpt Surv	Bearing Distance Correction	Adpt Surv Class
LOL	UNMK 45 DP 548048	ob277	333°45'25" P		6.859 P	
LOL	DCDB	ob278	56°47'50.3" P		363.906 P	
LOL	UNMK 48 DP 548048	ob279	59°57'58.1" P		59.08 P	
LOL	Added for irreg line maintenance	ob280	233°44'41.6" P		197.20 P	
LOL	UNMK 45 DP 548048	ob281	273°09'40.5" P		29.095 P	
LOL	DCDB	ob282	55°02'11.1" P		339.807 P	
LOL	UNMK 48 DP 548048	ob283	45°07'22.7" P		35.463 P	
LOL	Added for irreg line maintenance	ob284	236°46'55.3" P		221.18 P	
LOL	UNMK 48 DP 548048	ob285	187°37'10.8" P		98.616 P	
LOL	DCDB	ob286	73°19'37.4" P		250.816 P	
LOL	UNMK 64 DP 548048	ob287	100°29'43.6" P		39.657 P	
LOL	LOL	ob288	197°17'11.6" P		128.575 P	
LOL	UNMK 48 DP 548048	ob289	203°46'17.2" P		105.072 P	
LOL	DCDB	ob290	70°46'57.2" P		223.445 P	
LOL	UNMK 64 DP 548048	ob291	120°07'19.6" P		11.233 P	
LOL	LOL	ob292	209°06'46" P		138.704 P	

Mark Name	Description
Added for irreg line mai	Added for irreg line split from LoL CTG
PEG (10) DP 90142	PEG XVI SO 5511
PEG 7 DP 548048	reinstates PEG SO 21053
PEG 9 DP 548048	reinstates PEG SO 21053

*** End of Report ***

Occupation Diagram

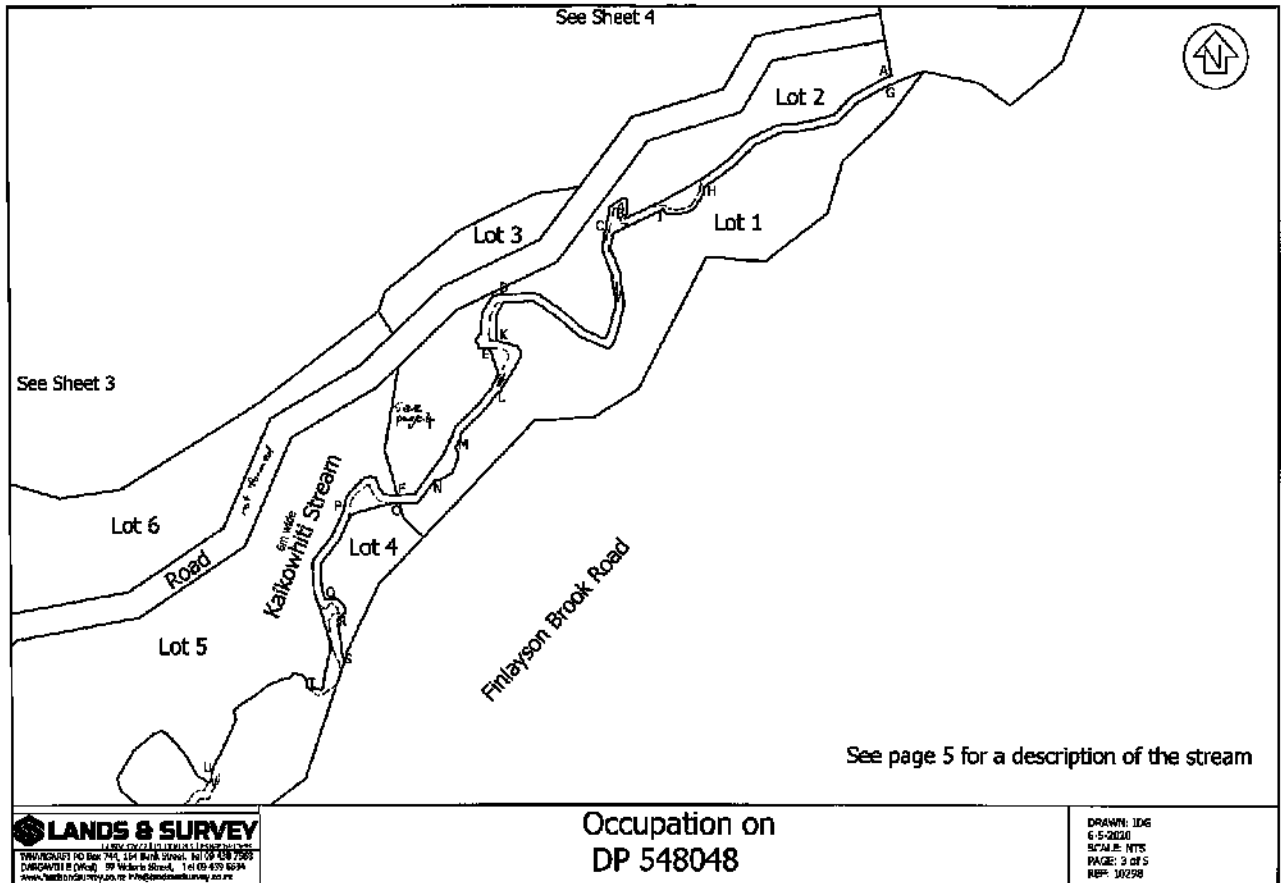


LANDS & SURVEY
 WANGANUI PO Box 144, 161 Bank Street, Tel: 09 438 7500
 DUNEDIN (HQ) 57 Victoria Street, Tel: 09 439 8691
 www.landsurvey.govt.nz

Occupation on
DP 548048

DRAWN: MDG
 6-5-2020
 SCALE: N78
 PAGE: 2 of 5
 REF: 10258

Occupation Diagram



LANDS & SURVEY
 TRADING AS THE LANDS & SURVEY
 111 WILSON ROAD, 111 WILSON ROAD, AUCKLAND, NEW ZEALAND
 DUBLIN OFFICE: 19 Wicklow Street, 1st Floor, Dublin 1, Ireland
 www.landsurvey.co.nz

Occupation on
 DP 548048

DRAWN: IDG
 C: 5-2020
 SCALE: NTS
 PAGE: 3 OF 5
 REF: 10258

Occupation Diagram

Stream Definition		
Aerial orthophotography is from Northland 0.4metre Rural Aerial Photos (2014-2016) from the LINZ Data Service		
Lots 1 and 2		
Portion	Description	Last shown Fixed by
A-B	Stream adopted from SO 21053 - this generally agrees with the stream fixed	SO 21053 survey
B-C	Right side new stream fix - erosion	SO 21053 survey
	Left side stream adopted from SO 21053 - accretion not claimed	SO 21053 survey
C-D	Stream adopted from SO 21053 - this generally agrees with the stream fixed	SO 21053 survey
D-E	Right side new stream fix - erosion	SO 21053 survey
	Left side stream adopted from SO 21053 - accretion not claimed	SO 21053 survey
E-F	Right side stream adopted from SO 21053 - accretion not claimed	SO 21053 survey
G-H	Stream adopted from SO 21053 - this generally agrees with the stream fixed	SO 21053 survey
I-H	Left side new stream fix - erosion	SO 21053 survey
J-K	Left side stream adopted from SO 21053 - accretion not claimed	SO 21053 survey
K-L	Left side new stream fix - erosion	SO 21053 survey
L-M	Stream adopted from SO 21053 - this generally agrees with the stream fixed	SO 21053 survey
M-N	Left side new stream fix - erosion	SO 21053 survey
N-O	Stream adopted from SO 21053 - this generally agrees with the stream fixed	SO 21053 survey
Lots 4 and 5		
P-P	Right side new stream fix - erosion	SO 21053 survey
P-T	Right side stream adopted from SO 21053 - some accretion not claimed	SO 21053 survey
Q-Q	Left side stream adopted from SO 21053 - accretion not claimed	SO 21053 survey
Q-R	Left side new stream fix - erosion	SO 21053 survey
	Right side stream adopted from SO 21053 - some accretion not claimed	SO 21053 survey
R-S	Left side new stream fix - erosion	SO 21053 survey
Lot 5		
T-U	Right side new stream fix - erosion	SO 21053 survey
U-V	Stream adopted from SO 21053 - this generally agrees with the stream fixed	SO 21053 survey
V-W	Stream adopted from SO 21053 - dried up bed	SO 21053 survey
W-X	Stream adopted from SO 21053 - this generally agrees with the stream fixed	SO 21053 survey
X-Y	Stream adopted from SO 21053 and SO 5511 - dried up bed	SO 5511 survey
Y-Z	Right side new stream fix - erosion	SO 5511 survey and aerial photo
Z-A1	Stream plotted from aerial photography which is generally the same as SO 5511 but improves it	SO 5511 aerial photo
A1-B1	Stream plotted from aerial photography which better than SO 5511	SO 5511 aerial photo
B1-C1	Right side new stream fix - erosion	SO 5511 aerial photo
C1-D1	Adopted from SO 5511 as there is accretion	SO 5511 survey
D1-E1	Stream plotted from aerial photography which is generally the same as SO 5511 but improves it	SO 5511 aerial photo



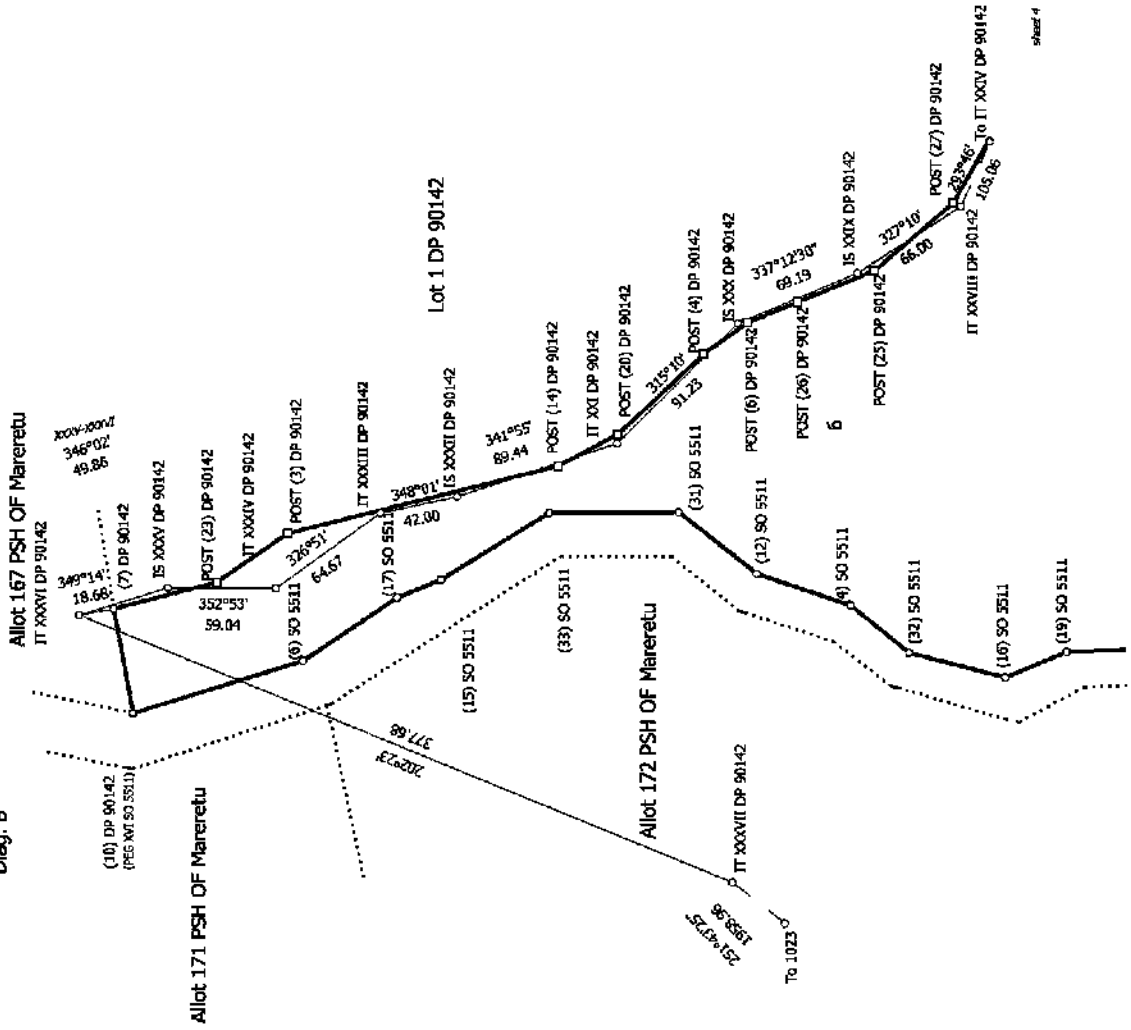
LANDS & SURVEY
 PIONEER BUILDINGS, 111-113, QUEEN STREET, AUCKLAND
 WHANGAREI PO Box 744, 1041 Bank Street, PO Box 431 7508
 DUNEDIN (PHONE) 03 478 6600, 03 478 6601, 03 478 6602
 www.landsurvey.co.nz info@landsurvey.co.nz

Occupation on DP 548048

DRAWN: JDG
 6-5-2020
 SCALE: N1:5
 PAGES: 5 of 5
 REF: 10296



Diag. B



sheet 2

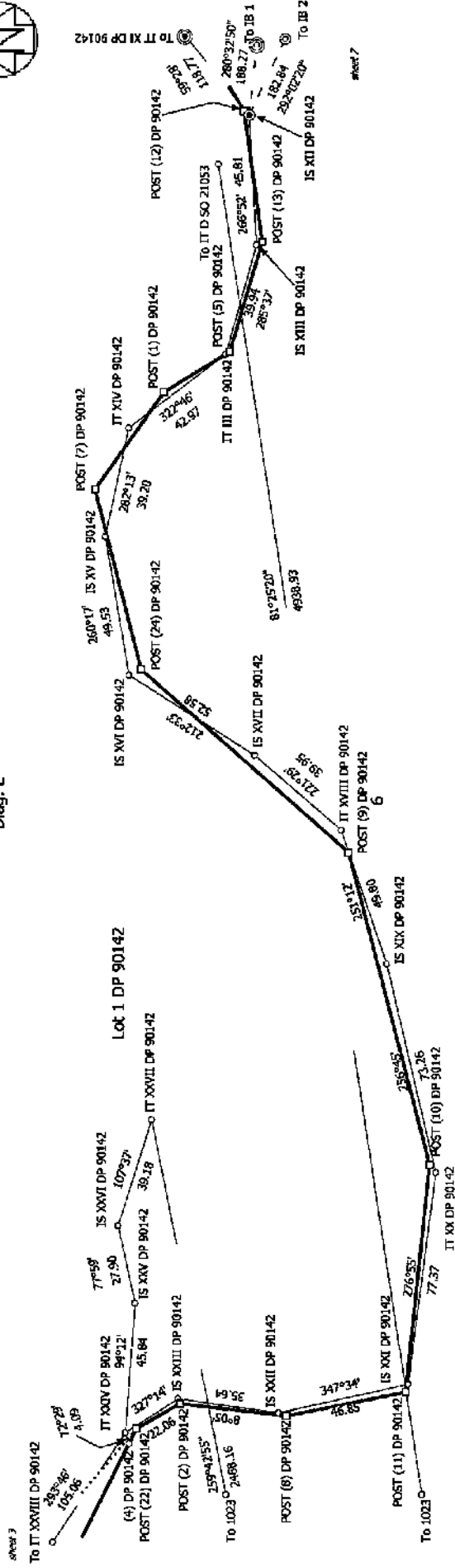
sheet 4

S 3/11

<p>Land District: North Auckland</p> <p>Digitally Generated Plan</p> <p>Generated on: 19/11/2020 12:36pm Page 22 of 36</p>	<p>Lots 1 to 6 being a subdivision of Part Allotments 168 and 169 Parish of Mareretu and Section 13 Block IV Waipua SD.</p>	<p>Surveyor: Ian David Gillespie</p> <p>Firm: Lands & Survey Ltd</p> <p>Survey Date: 7/05/2020</p>	<p>CSD Plan</p> <p>DP 548048</p> <p>Deposited on: 6/11/2020</p>
--	---	--	---



Diag. E



S 4/11

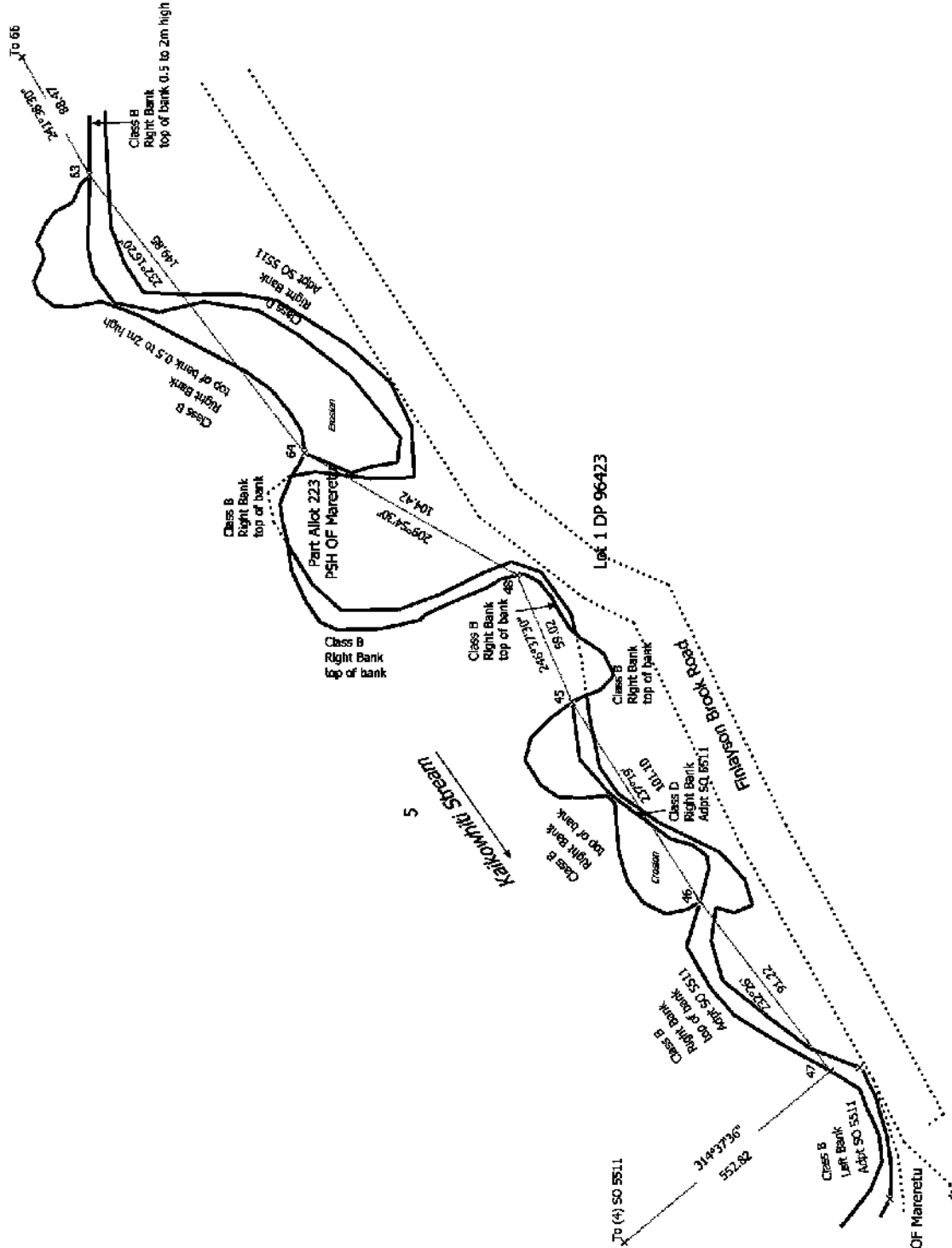
Land District: North Auckland
 Digitally Generated Plan
 Generated on: 19/11/2020 12:36pm Page 23 of 36

Surveyor: Ian David Gillespie
 Firm: Lands & Survey Ltd
 Survey Date: 7/05/2020

Diag. E
 Lots 1 to 6 being a subdivision of Part Allotments 168 and 169 Parish of
 Mareretu and Section 13 Block IV Waipu SD.

CSD Plan
 DP 548048
 Deposited on: 6/11/2020

Diag. D



Part Allot. 223A PSH OF MAREKETU

Lot 1 DP 96423

Emerson
Emerson Brook Road

Kaitiaki Stream

S 5/11

Land District: North Auckland
Digitally Generated Plan
Generated on: 19/11/2020 12:36pm Page 2 of 36

Lots 1 to 6 being a subdivision of Part Allotments 168 and 169 Parish of
Mareketu and Section 13 Block IV Waipū SD.

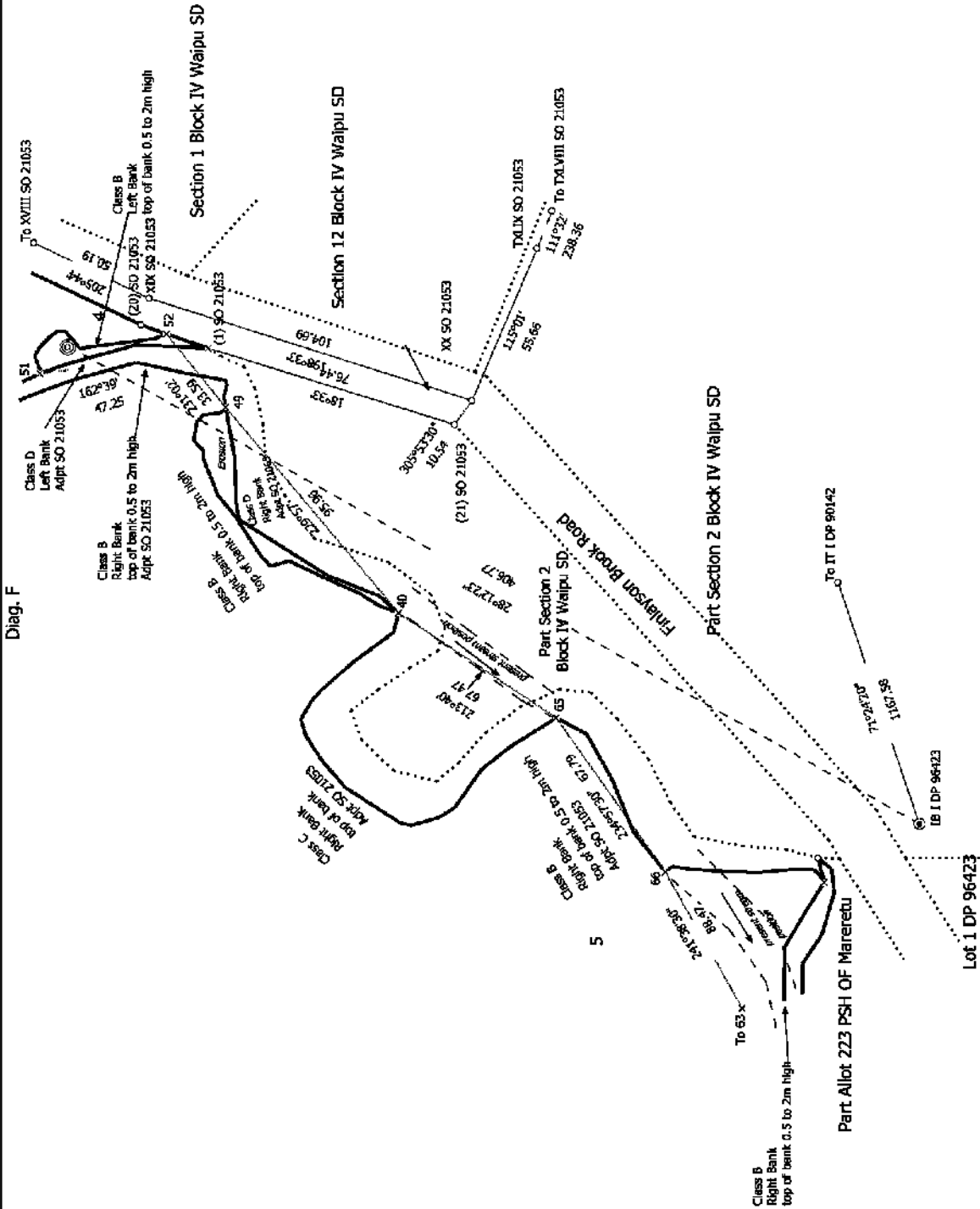
Surveyor: Ian David Gillespie
Firm: Lands & Survey Ltd
Survey Date: 7/05/2020

CSD Plan
DP 548048

Deposited on: 6/11/2020



Diag. F



S 6/11

Land District: North Auckland
 Digital Generated Plan
 Generated on: 19/11/2020 12:36pm Page 25 of 36

Lots 1 to 6 being a subdivision of Part Allotments 168 and 169 Parish of Māreketu and Section 13 Block IV Waipū SD.

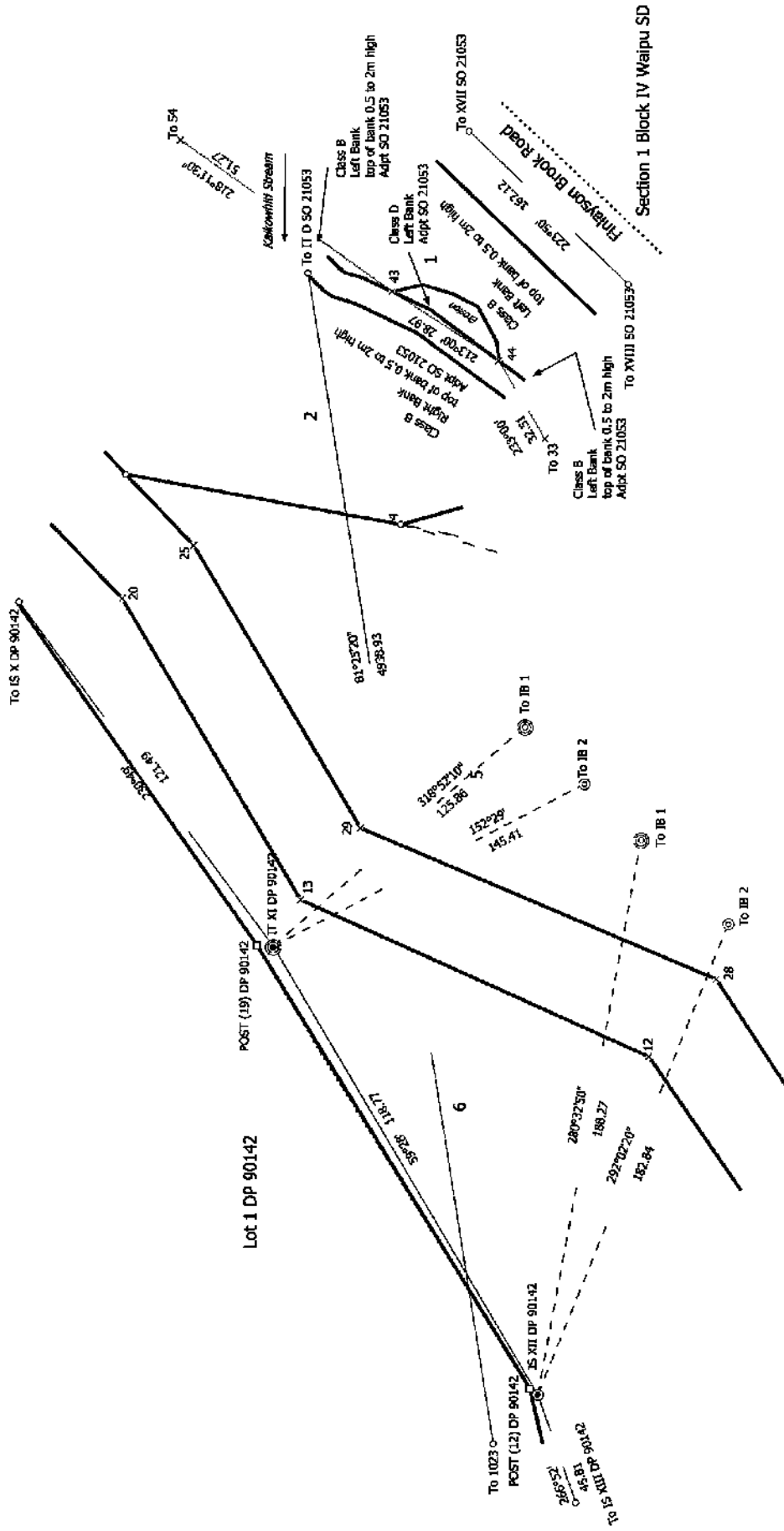
Surveyor: Ian David Gilchrist
 Firm: Lands & Survey Ltd
 Survey Date: 7/05/2020

CSD Plan
 DP 548048

Deposited on: 6/11/2020



Diag. G



Section 1 Block IV Waipū SD

S 7/11

Land District: North Auckland

Digitally Generated Plan

Generated on: 19/11/2020 12:35pm Page 26 of 36

Lots 1 to 6 being a subdivision of Part Allotments 168 and 169 Parish of
Mareketu and Section 13 Block IV Waipū SD.

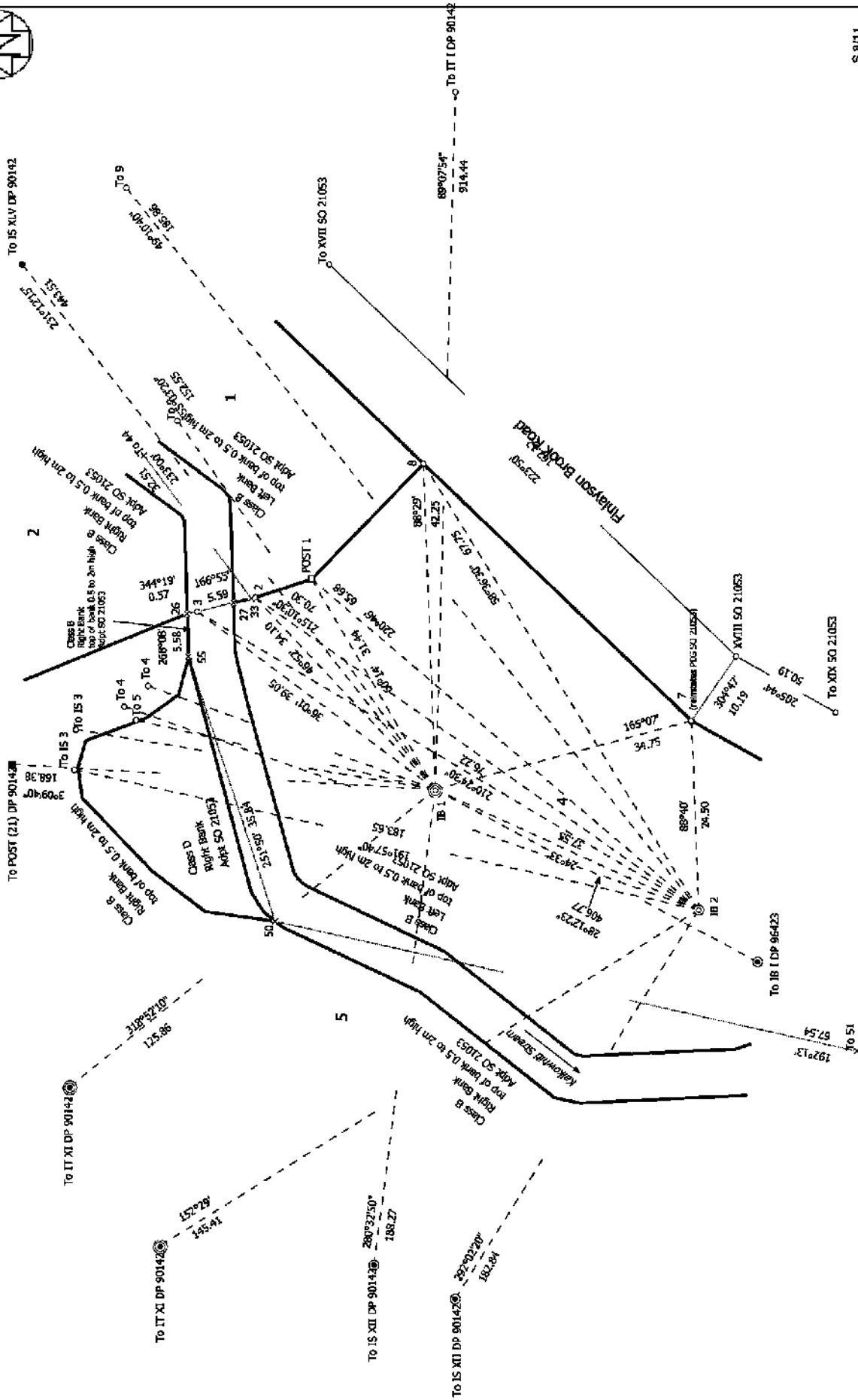
Surveyor: Ian David Gillespie
Firm: Lands & Survey Ltd
Survey Date: 7/05/2020

CSD Plan
DP 548048

Deposited on: 6/11/2020



Diag. H



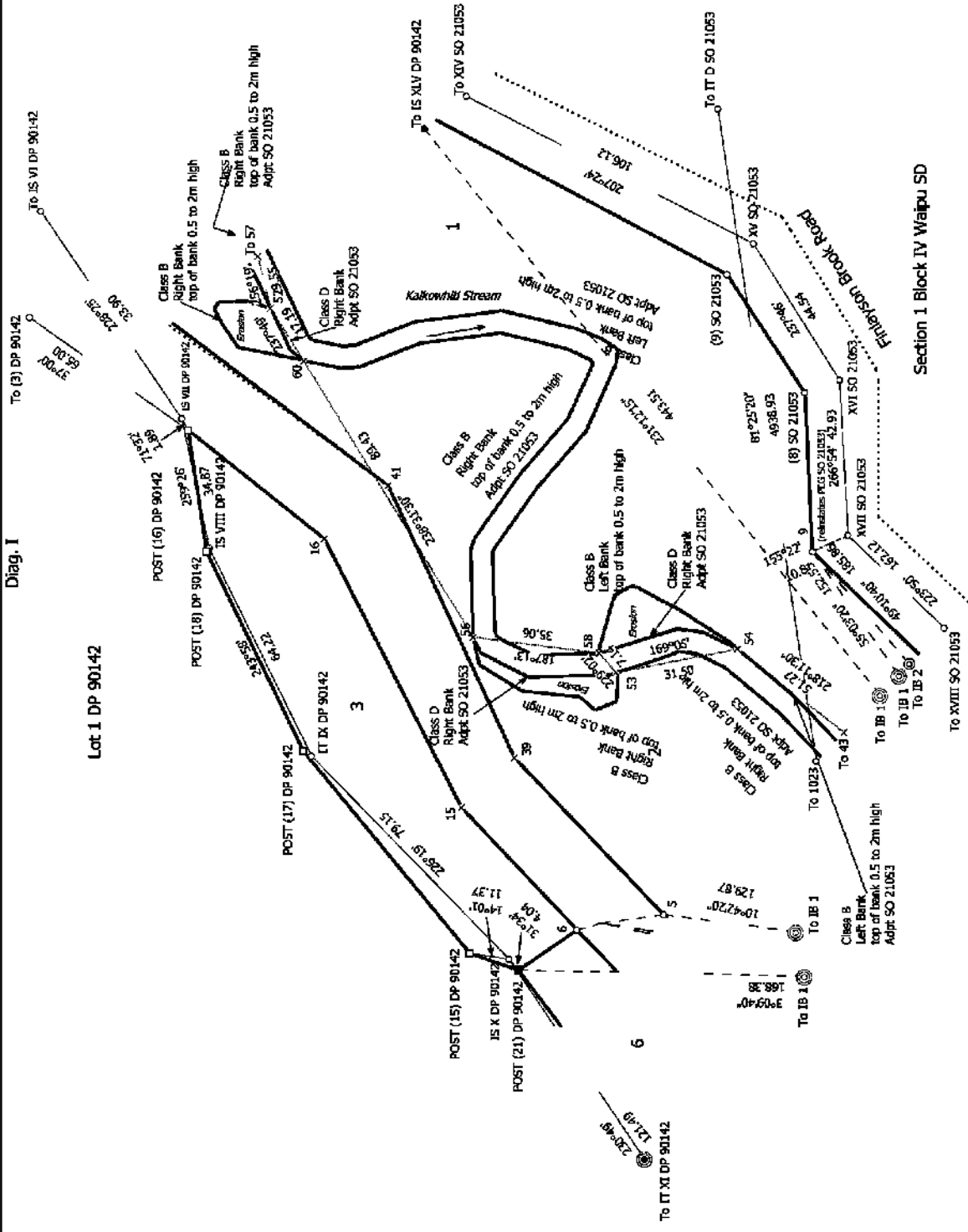
S 8/11

Land District: North Auckland
 Digitally Generated Plan
 Generated on: 19/11/2020 12:35pm Page 27 of 36

Lots 1 to 6 being a subdivision of Part Allotments 168 and 169 Parish of
 Māreretu and Section 13 Block IV Waipū SD.

Surveyor: Ian David Gillespie
 Firm: Lands & Survey Ltd
 Survey Date: 7/05/2020

CSD Plan
 DP 548048
 Deposited on: 6/11/2020



Diag. I

Lot 1 DP 90142

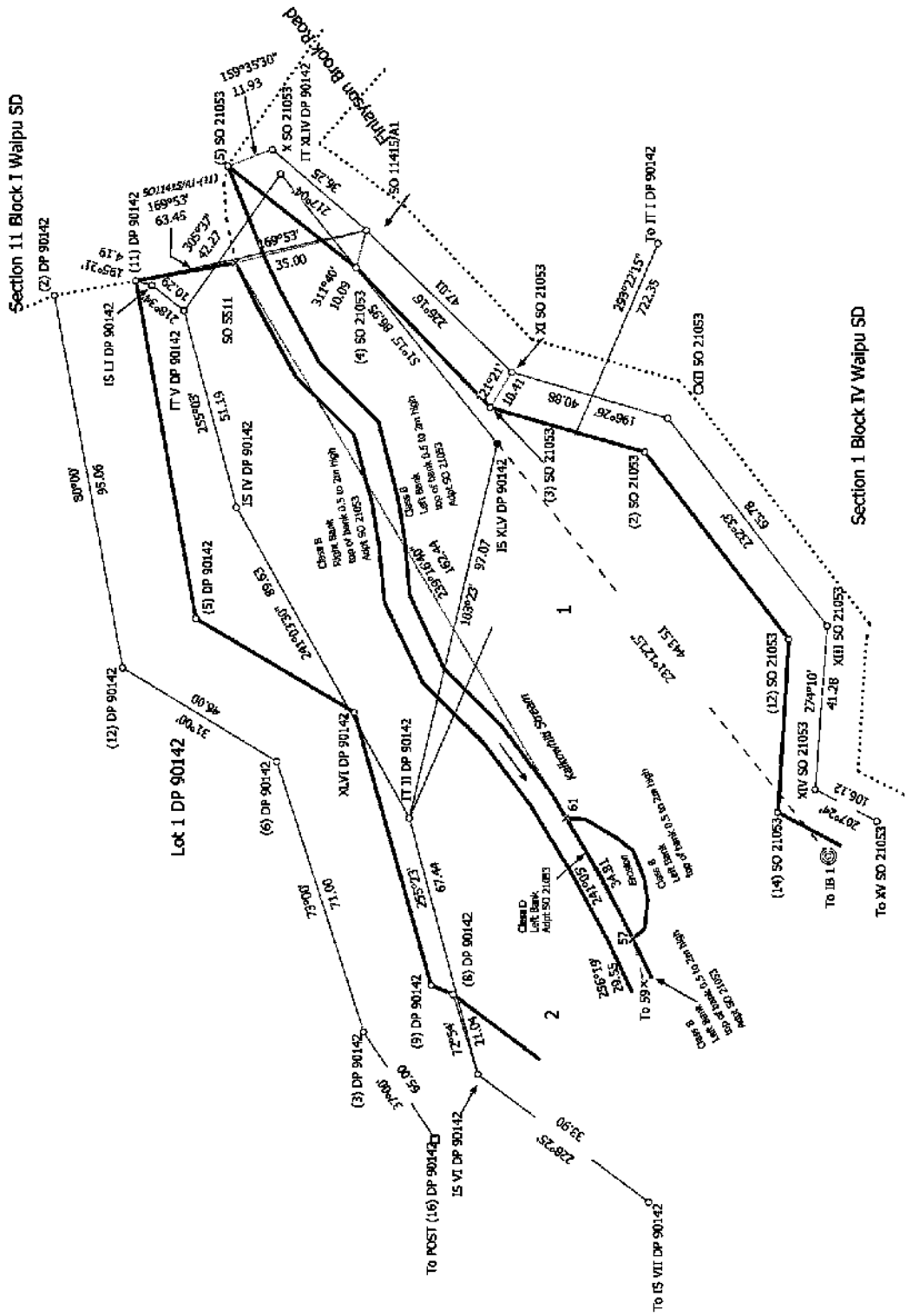
Section 1 Block IV Waipū SD

S 9/11

<p>Land District: North Auckland Didiaiv Generated Plan Generated on: 19/11/2020 12:36pm Page 28 of 36</p>	<p>Lots 1 to 6 being a subdivision of Part Allotments 168 and 169 Parish of Māreretu and Section 13 Block IV Waipū SD.</p>	<p>Surveyor: Ian David Gillespie Firm: Lands & Survey Ltd Survey Date: 7/05/2020</p>	<p>CSD Plan DP 548048 Deposited on: 6/11/2020</p>
--	---	--	---



Diag. K

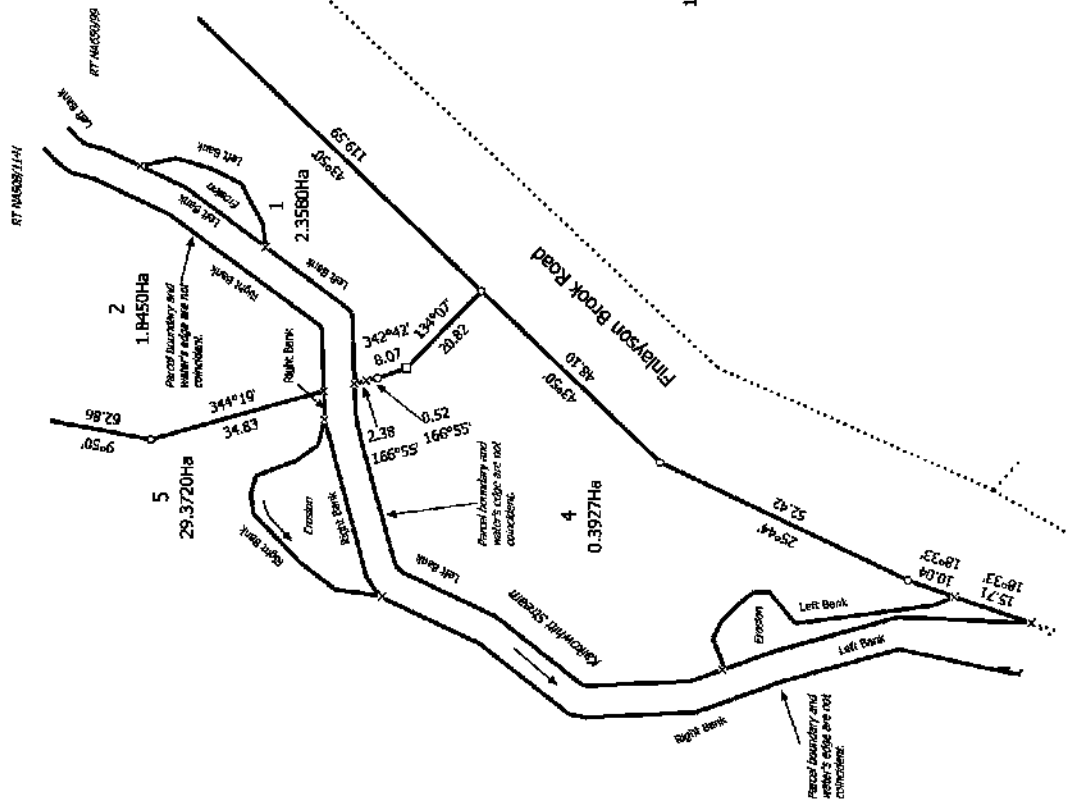


\$ 10/11

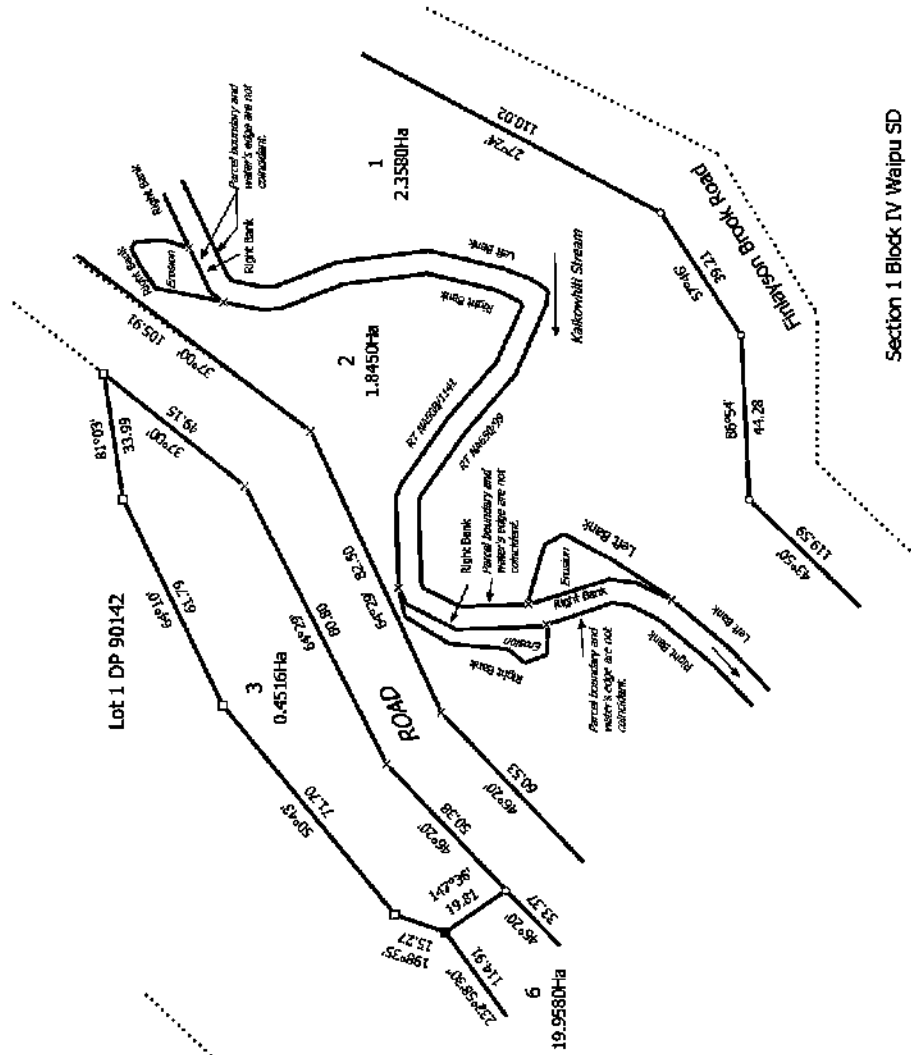
<p>Land District: North Auckland</p>	<p>Surveyor: Ian David Gillespie Firm: Lands & Survey Ltd Survey Date: 7/05/2020</p>	<p>CSD Plan DP 548048</p>	<p>Deposited on: 6/11/2020</p>
<p>Diag. K Generated Plan Generated on: 18/11/2020 12:36pm Page 29 of 36</p>		<p>Lots 1 to 6 being a subdivision of Part Allotments 168 and 169 Parish of Mareketu and Section 13 Block IV Waipū SD.</p>	



Diag. AF



Diag. AG



Section 1 Block IV Waipū SD

T 5/6

Land District: North Auckland

Lots 1 to 6 being a subdivision of Part Allotments 168 and 169 Parish of
Mareketu and Section 13 Block IV Waipū SD.

Surveyor: Ian David Gillespie
Firm: Lands & Survey Ltd
Survey Date: 7/05/2020

CSD Plan
DP 548048

Didiāi Generated Plan
Generated on: 19/11/2020 12:36pm Page 15 of 36

Deposited on: 6/11/2020

