



Record of Survey - DP 567781

Survey Number DP 567781
Surveyor Reference 4544G Gethsemane Gardens
Surveyor Alexander David John Liggett
Survey Firm Fox and Associates
Surveyor Declaration I Alexander David John Liggett, being a licensed cadastral surveyor, certify that--
(a) this dataset provided by me and its related survey are accurate, correct and in accordance with the Cadastral Survey Act 2002 and Cadastral Survey Rules 2021; and
(b) the survey was undertaken by me or under my personal direction.
Declared on 19 Jul 2022 09:13 AM

Survey Details

Dataset Description Lots 1 to 17 being a Subdivision of Lots 1 & 3 DP 508120
Purpose LT Subdivision
Status Deposited **Type** Survey
Land District Canterbury **Survey Class** Class A
Meridional Circuit Mount Pleasant 2000 **Vertical Datum** None

Survey Dates

Surveyed Date 03/02/2022 **Certified Date** 19/07/2022
Submitted Date 19/07/2022 09:13:18 **Survey Approval Date** 19/07/2022
Deposit Date 04/07/2022

Referenced Surveys

Survey Number	Land District	Bearing Correction
DP 53948	Canterbury	-0°01'00"
DP 69379	Canterbury	-0°01'00"
SO 17959	Canterbury	0°00'00"
DP 46251	Canterbury	0°00'00"
DP 336575	Canterbury	0°00'00"
DP 485106	Canterbury	0°00'00"
DP 498616	Canterbury	0°00'00"
DP 508120	Canterbury	0°00'00"
LT 404904	Canterbury	0°00'00"
DP 529299	Canterbury	0°00'00"
DP 47950	Canterbury	0°00'00"
DP 565618	Canterbury	0°00'00"

Territorial Authorities

Christchurch City

Comprised In

RT 772795
RT 772797

Record of Survey - DP 567781

Created Parcels

Parcels	Parcel Intent	Area	RT Reference
Area EA Deposited Plan 567781	Easement		
Area EB Deposited Plan 567781	Easement		
Area EC Deposited Plan 567781	Easement		
Area ED Deposited Plan 567781	Easement		
Area EH Deposited Plan 567781	Easement		
Area EI Deposited Plan 567781	Easement		
Area EJ Deposited Plan 567781	Easement		
Area EK Deposited Plan 567781	Easement		
Area EL Deposited Plan 567781	Easement		
Area EM Deposited Plan 567781	Easement		
Area EN Deposited Plan 567781	Easement		
Area OA Deposited Plan 567781	Easement		
Area EE Deposited Plan 567781	Easement		
Area EF Deposited Plan 567781	Easement		
Area GA Deposited Plan 567781	Easement		
Area GB Deposited Plan 567781	Easement		
Lot 1 Deposited Plan 567781	Fee Simple Title	0.0768 Ha	1029498
Lot 2 Deposited Plan 567781	Fee Simple Title	0.0863 Ha	1029499
Lot 3 Deposited Plan 567781	Fee Simple Title	0.0902 Ha	1029500
Lot 4 Deposited Plan 567781	Fee Simple Title	0.1054 Ha	1029501
Lot 5 Deposited Plan 567781	Fee Simple Title	0.1007 Ha	1029502
Lot 6 Deposited Plan 567781	Fee Simple Title	0.0698 Ha	1029503
Lot 7 Deposited Plan 567781	Fee Simple Title	0.0778 Ha	1029504
Lot 8 Deposited Plan 567781	Fee Simple Title	0.0786 Ha	1029505
Lot 9 Deposited Plan 567781	Fee Simple Title	0.0864 Ha	1029506
Lot 10 Deposited Plan 567781	Fee Simple Title	0.1255 Ha	1029507
Lot 11 Deposited Plan 567781	Fee Simple Title	0.0866 Ha	1029508
Lot 12 Deposited Plan 567781	Fee Simple Title	0.1049 Ha	1029509
Lot 13 Deposited Plan 567781	Fee Simple Title	0.1017 Ha	1029510
Lot 14 Deposited Plan 567781	Fee Simple Title	0.1200 Ha	1029511
Lot 15 Deposited Plan 567781	Fee Simple Title	1.0266 Ha	1029512
Lot 16 Deposited Plan 567781	Fee Simple Title	0.6157 Ha	1029513
Lot 17 Deposited Plan 567781	Fee Simple Title	0.1853 Ha	Multiple
Area A Deposited Plan 567781	Easement		
Area B Deposited Plan 567781	Easement		
Area C Deposited Plan 567781	Easement		
Area D Deposited Plan 567781	Easement		
Area E Deposited Plan 567781	Easement		
Area F Deposited Plan 567781	Easement		
Area G Deposited Plan 567781	Easement		
Area H Deposited Plan 567781	Easement		
Area I Deposited Plan 567781	Easement		
Area J Deposited Plan 567781	Easement		
Area K Deposited Plan 567781	Easement		



Record of Survey - DP 567781

Created Parcels

Parcels	Parcel Intent	Area	RT Reference
Area L Deposited Plan 567781	Easement		
Area M Deposited Plan 567781	Easement		
Area N Deposited Plan 567781	Easement		
Area O Deposited Plan 567781	Easement		
Area P Deposited Plan 567781	Easement		
Area Q Deposited Plan 567781	Easement		
Area R Deposited Plan 567781	Easement		
Area S Deposited Plan 567781	Easement		
Area T Deposited Plan 567781	Easement		
Area Y Deposited Plan 567781	Easement		
Area Z Deposited Plan 567781	Easement		
Area U Deposited Plan 567781	Easement		
Area OB Deposited Plan 567781	Easement		
Total Area		<hr/> 3.1383 Ha	

Mark and Vector

Survey Number DP 567781
Meridional Circuit Mount Pleasant 2000

From	To	Code	Bearing	Adpt Surv	Bearing Correction	Distance	Adpt Surv	Class
IR I DP 485106	IR I DP 508120	ob91	195°01'10" M			111.54 M		
IR I DP 508120	IS X DP 69379	ob85	53°55'20" M			220.00 M		
IS X DP 69379	IR I DP 485106	ob89	261°40'00" M			150.50 M		
IR I DP 508120	IT XIII SO 17959	ob86	44°51'00" M			64.55 M		
IT XIII SO 17959	RN 1 DP 567781	ob96	49°10'30" M			63.16 M		
RN 1 DP 567781	IT VIII DP 69379	ob100	68°35'00" M			63.07 M		
IT VIII DP 69379	IS X DP 69379	ob108	52°56'50" M			32.31 M		
RN 1 DP 567781	MA VII DP 565618	ob101	223°45'00" M			34.79 M		
MA VII DP 565618	RN 5 DP 567781	ob124	190°21'00" M			40.42 M		
RN 5 DP 567781	IT IV DP 485106	ob135	117°04'30" M			102.92 M		
IT IV DP 485106	IT III DP 485106	ob143	46°30'40" M			103.13 M		
IT III DP 485106	IS X DP 69379	ob147	328°41'20" M			97.46 M		
IT IV DP 485106	RN 7 DP 567781	ob144	330°48'30" M			68.33 M		
RN 7 DP 567781	RN 8 DP 567781	ob154	56°04'00" M			56.50 M		
RN 8 DP 567781	RN 9 DP 567781	ob177	291°01'00" M			48.67 M		
RN 9 DP 567781	RN 1 DP 567781	ob194	276°11'00" M			28.61 M		
RN 5 DP 567781	RN 22 DP 567781	ob136	152°55'00" M			38.07 M		
RN 22 DP 567781	RN 7 DP 567781	ob255	41°15'30" M			62.13 M		
RN 8 DP 567781	IS X DP 69379	ob178	9°34'00" M			63.93 M		
RN 7 DP 567781	MA VII DP 565618	ob155	297°50'00" M			57.73 M		
RN 5 DP 567781	RN 7 DP 567781	ob137	77°36'30" M			59.71 M		
RN 1 DP 567781	NAIL 2 DP 567781	ob102	280°56'00" M			43.40 M		
NAIL 2 DP 567781	IR I DP 485106	ob111	299°44'00" M			25.11 M		
IR I DP 485106	IR II DP 508120	ob92	206°01'25" A DP 508120	0°00'00"		165.56 A DP 508120		
IR II DP 508120	IR I DP 508120	ob0	46°48'30" A DP 508120	0°00'00"		59.97 A DP 508120		
IR I DP 508120	IS II SO 17959	ob87	68°47'10" A DP 508120	0°00'00"		63.08 A DP 508120		
IS II SO 17959	IT XIII SO 17959	ob2	329°56'00" A DP 508120	0°00'00"		26.48 A DP 508120		
IT XIII SO 17959	IT XI DP 69379	ob97	53°00'40" A DP 508120	0°00'00"		60.59 A DP 508120		
IT XI DP 69379	IR I DP 485106	ob4	291°26'00" A DP 508120	0°00'00"		69.85 A DP 508120		
IT XIII SO 17959	IR IX DP 485106	ob98	144°32'30" A DP 508120	0°00'00"		42.32 A DP 508120		



Mark and Vector

Survey Number DP 567781
 Meridional Circuit Mount Pleasant 2000

From	To	Code	Bearing	Adpt Surv	Bearing Correction	Distance	Adpt Surv	Class
IR IX DP 485106	IT VIII DP 485106	ob7	155°57'20"	A DP 508120	0°00'00"	54.06	A DP 508120	
IT VIII DP 485106	IT IV DP 485106	ob8	77°43'20"	A DP 485106	0°00'00"	62.97	A DP 485106	
IR II DP 508120	IT III DP 508120	ob1	172°54'40"	A DP 508120	0°00'00"	70.27	A DP 508120	
IT III DP 508120	IT IV DP 508120	ob10	274°38'10"	A DP 508120	0°00'00"	47.18	A DP 508120	
IT IV DP 508120	MN I DP 404904	ob12	8°55'55"	A DP 508120	0°00'00"	258.30	A DP 508120	
MN I DP 404904	IR I DP 485106	ob151	119°43'30"	A DP 485106	0°00'00"	81.62	A DP 485106	
MN I DP 404904	IT III DP 69379	ob152	84°43'00"	A DP 485106	0°00'00"	148.00	A DP 485106	
IT III DP 69379	IT VIII DP 69379	ob304	137°59'55"	A DP 485106	0°00'00"	69.67	A DP 485106	
IT XI DP 69379	IT VIII DP 69379	ob5	64°22'35"	A DP 69379	-0°01'00"	64.43	A DP 69379	
IS X DP 69379	MA LXIV DP 46251	ob90	141°17'00"	A DP 485106	0°00'00"	9.86	A DP 485106	
MA LXIV DP 46251	IR V DP 46251	ob13	169°12'00"	A DP 46251	0°00'00"	26.15	A DP 46251	
IR V DP 46251	IR IX DP 46251	ob14	134°22'00"	A DP 46251	0°00'00"	48.47	A DP 46251	
IR IX DP 46251	IT III DP 485106	ob15	162°51'00"	A DP 485106	0°00'00"	16.73	A DP 485106	
IT IV DP 485106	PEG 26 DP 567781	ob145	299°17'00"	M		23.74	M	
IT IV DP 485106	PEG 27 DP 567781	ob146	0°41'00"	M		29.47	M	
IT III DP 485106	PEG 28 DP 567781	ob148	249°17'00"	M		49.26	M	
IT III DP 485106	PEG 29 DP 567781	ob149	270°55'00"	M		25.05	M	
RN I DP 567781	PEG 11 DP 567781	ob103	252°42'00"	M		6.84	M	
RN I DP 567781	PEG 12 DP 567781	ob104	258°24'00"	M		21.19	M	
RN I DP 567781	PEG 20 DP 567781	ob105	177°55'00"	M		19.92	M	
RN I DP 567781	PEG 19 DP 567781	ob106	165°43'00"	M		16.27	M	
RN I DP 567781	PEG 10 DP 567781	ob107	120°00'00"	M		2.80	M	
MA VII DP 565618	PEG 56 DP 567781	ob125	102°37'00"	M		18.36	M	
MA VII DP 565618	PEG 55 DP 567781	ob126	112°03'00"	M		22.52	M	
MA VII DP 565618	PEG 49 DP 567781	ob127	101°13'00"	M		26.35	M	
MA VII DP 565618	PEG 48 DP 567781	ob128	98°45'00"	M		25.88	M	
MA VII DP 565618	PEG 47 DP 567781	ob129	93°09'00"	M		24.58	M	



Mark and Vector

Survey Number DP 567781
Meridional Circuit Mount Pleasant 2000

From	To	Code	Bearing	Adpt Surv	Bearing Distance Correction	Adpt Surv Class
MA VII DP 565618	PEG 46 DP 567781	ob130	90°26'00" M		23.76 M	
MA VII DP 565618	PEG 21 DP 567781	ob131	84°27'00" M		23.16 M	
MA VII DP 565618	PEG 23 DP 567781	ob132	99°20'00" M		16.10 M	
MA VII DP 565618	PEG 13 DP 567781	ob133	75°05'00" M		2.82 M	
RN 5 DP 567781	PEG 24 DP 567781	ob138	212°16'00" M		8.93 M	
RN 5 DP 567781	PEG 77 DP 567781	ob139	188°49'00" M		9.26 M	
RN 5 DP 567781	PEG 85 DP 567781	ob140	121°50'00" M		1.00 M	
RN 5 DP 567781	PEG 70 DP 567781	ob141	82°48'00" M		19.08 M	
RN 5 DP 567781	PEG 87 DP 567781	ob142	148°37'00" M		6.73 M	
RN 22 DP 567781	PEG 54 DP 567781	ob256	320°56'00" M		18.30 M	
RN 22 DP 567781	PEG 88 DP 567781	ob257	339°30'00" M		18.78 M	
RN 22 DP 567781	PEG 89 DP 567781	ob258	64°13'00" M		5.71 M	
RN 22 DP 567781	PEG 90 DP 567781	ob259	81°17'00" M		15.81 M	
RN 22 DP 567781	PEG 78 DP 567781	ob260	122°13'00" M		9.36 M	
RN 22 DP 567781	PEG 75 DP 567781	ob261	152°20'00" M		2.14 M	
RN 7 DP 567781	PEG 66 DP 567781	ob156	310°27'00" M		22.23 M	
RN 7 DP 567781	PEG 50 DP 567781	ob157	313°36'00" M		18.04 M	
RN 7 DP 567781	PEG 51 DP 567781	ob158	314°47'00" M		16.87 M	
RN 7 DP 567781	PEG 52 DP 567781	ob159	66°52'00" M		6.55 M	
RN 7 DP 567781	PEG 53 DP 567781	ob160	106°20'00" M		13.50 M	
RN 7 DP 567781	PEG 57 DP 567781	ob161	128°54'00" M		7.36 M	
RN 7 DP 567781	PEG 58 DP 567781	ob162	131°52'00" M		4.03 M	
RN 7 DP 567781	PEG 59 DP 567781	ob163	214°30'00" M		1.01 M	
RN 7 DP 567781	PEG 60 DP 567781	ob164	239°45'00" M		4.56 M	



Mark and Vector

Survey Number DP 567781
Meridional Circuit Mount Pleasant 2000

From	To	Code	Bearing	Adpt Surv	Bearing Distance Correction	Adpt Surv Class
RN 7 DP 567781	PEG 61 DP 567781	ob165	234°39'00" M		6.63 M	
RN 7 DP 567781	PEG 62 DP 567781	ob166	256°45'00" M		9.06 M	
RN 7 DP 567781	PEG 63 DP 567781	ob167	270°05'00" M		8.41 M	
RN 7 DP 567781	PEG 82 DP 567781	ob168	99°52'00" M		15.42 M	
RN 7 DP 567781	PEG 83 DP 567781	ob169	86°43'00" M		19.17 M	
RN 7 DP 567781	DISC 67 DP 567781	ob170	114°47'00" M		19.43 M	
RN 7 DP 567781	PEG 69 DP 567781	ob171	131°07'00" M		17.57 M	
RN 7 DP 567781	PEG 65 DP 567781	ob172	294°48'00" M		21.63 M	
RN 7 DP 567781	PEG 84 DP 567781	ob173	218°38'00" M		13.01 M	
RN 7 DP 567781	PEG 64 DP 567781	ob174	289°16'00" M		9.59 M	
RN 7 DP 567781	PEG 93 DP 567781	ob175	292°17'00" M		10.77 M	
RN 7 DP 567781	PEG 71 DP 567781	ob176	200°36'00" M		29.06 M	
RN 8 DP 567781	PEG 41 DP 567781	ob179	235°47'00" M		10.65 M	
RN 8 DP 567781	PEG 40 DP 567781	ob180	170°30'00" M		8.15 M	
RN 8 DP 567781	PEG 68 DP 567781	ob181	192°54'00" M		29.92 M	
RN 8 DP 567781	PEG 81 DP 567781	ob182	99°50'00" M		25.05 M	
RN 8 DP 567781	PEG 38 DP 567781	ob183	108°24'00" M		26.29 M	
RN 8 DP 567781	PEG 35 DP 567781	ob184	270°53'00" M		9.11 M	
RN 8 DP 567781	PEG 39 DP 567781	ob185	126°12'00" M		6.19 M	
RN 8 DP 567781	DISK 42 DP 567781	ob186	262°26'00" M		25.56 M	
RN 8 DP 567781	PEG 31 DP 567781	ob187	60°22'00" M		45.60 M	
RN 8 DP 567781	PEG 80 DP 567781	ob188	32°17'00" M		1.50 M	
RN 8 DP 567781	PEG 37 DP 567781	ob189	1°38'00" M		4.63 M	
RN 8 DP 567781	PEG 36 DP 567781	ob190	307°49'00" M		7.47 M	

Mark and Vector

Survey Number DP 567781

Meridional Circuit Mount Pleasant 2000

From	To	Code	Bearing	Adpt Surv	Bearing Correction	Distance	Adpt Surv	Class
RN 8 DP 567781	PEG 32 DP 567781	ob191	30°53'00" M			36.58 M		
RN 8 DP 567781	IS 1K DP 485106	ob192	357°53'00" M			40.02 M		
RN 8 DP 567781	PEG 79 DP 567781	ob193	340°13'00" M			13.20 M		
RN 9 DP 567781	PEG 33 DP 567781	ob195	128°36'00" M			2.36 M		
RN 9 DP 567781	PEG 34 DP 567781	ob196	137°51'00" M			18.19 M		
RN 9 DP 567781	PEG 18 DP 567781	ob197	256°52'00" M			7.68 M		
RN 9 DP 567781	PEG 45 DP 567781	ob198	241°57'00" M			5.69 M		
RN 9 DP 567781	PEG 17 DP 567781	ob199	2°44'00" M			2.87 M		
RN 9 DP 567781	DISK 44 DP 567781	ob200	158°27'00" M			16.90 M		
RN 9 DP 567781	PEG 43 DP 567781	ob201	152°19'00" M			24.64 M		
RN 9 DP 567781	PEG 73 DP 567781	ob202	34°13'00" M			35.67 M		
RN 9 DP 567781	DISK 74 DP 567781	ob203	33°16'00" M			39.32 M		
RN 9 DP 567781	PEG 14 DP 567781	ob204	63°21'00" M			45.45 M		
RN 9 DP 567781	PEG 16 DP 567781	ob205	56°33'00" M			24.05 M		
RN 9 DP 567781	PEG 72 DP 567781	ob206	51°43'00" M			19.21 M		
RN 9 DP 567781	PEG 15 DP 567781	ob207	57°54'00" M			25.89 M		
RN 9 DP 567781	PEG 30 DP 567781	ob208	59°26'00" M			0.94 M		
IR I DP 485106	PEG 3I DP 485106	ob93	243°59'00" A	DP 508120	0°00'00"	29.48 A	DP 508120	
IR I DP 485106	PEG 3I DP 565618	ob94	134°30'40" A	DP 508120	0°00'00"	55.17 A	DP 508120	
IR I DP 485106	PEG 58 DP 565618	ob95	138°18'00" A	DP 508120	0°00'00"	54.37 A	DP 508120	
IT XIII SO 17959	PEG 1C DP 485106	ob99	141°05'00" A	DP 485106	0°00'00"	28.78 A	DP 485106	
IS II SO 17959	IS SO 17959	ob3	170°28'00" A	SO 17959	0°00'00"	7.75 A	SO 17959	
IT III DP 508120	PEG 1E DP 508120	ob11	131°50'00" A	DP 508120	0°00'00"	34.43 A	DP 508120	
IT VIII DP 485106	PEG 1A DP 485106	ob9	86°07'00" A	DP 485106	0°00'00"	12.34 A	DP 485106	
IT III DP 485106	PEG I DP 46251	ob150	4°18'00" A	DP 485106	0°00'00"	23.18 A	DP 485106	

Mark and Vector

Survey Number DP 567781
 Meridional Circuit Mount Pleasant 2000

From	To	Code	Bearing	Adpt Surv	Bearing Correction	Distance	Adpt Surv	Class
IT VIII DP 69379	IS SO 17959	ob109	246°39'00"	A DP 485106	0°00'00"	3.72 A	DP 485106	
IT VIII DP 69379	IS 3A DP 485106	ob110	261°58'00"	A DP 485106	0°00'00"	20.86 A	DP 485106	
IT III DP 69379	PEG DP 69379	ob305	263°59'00"	A DP 69379	-0°01'00"	5.35 A	DP 69379	
IT XI DP 69379	MA 3B DP 485106	ob6	49°14'00"	A DP 485106	0°00'00"	11.98 A	DP 485106	
PEG 58 DP 565618	PEG 31 DP 565618	ob20	58°53'20"	A DP 508120	0°00'00"	3.71 A	DP 508120	Class A
PEG 31 DP 565618	IS 3E DP 485106	ob17	58°53'20"	A DP 508120	0°00'00"	16.61 A	DP 508120	Class A
IS 3E DP 485106	UNMK U5 DP 485106	ob29	72°19'00"	A DP 485106	0°00'00"	6.01 A	DP 485106	Class A
UNMK U5 DP 485106	IS 3D DP 485106	ob30	72°19'00"	A DP 485106	0°00'00"	7.82 A	DP 485106	Class A
IS 3D DP 485106	IS 3C DP 485106	ob32	47°57'00"	A DP 485106	0°00'00"	5.75 A	DP 485106	Class A
IS 3C DP 485106	UNMK U4 DP 485106	ob33	35°17'00"	A DP 485106	0°00'00"	1.81 A	DP 485106	Class A
UNMK U4 DP 485106	MA 3B DP 485106	ob34	35°17'00"	A DP 485106	0°00'00"	3.51 A	DP 485106	Class A
MA 3B DP 485106	IS 3A DP 485106	ob27	58°53'20"	A DP 485106	0°00'00"	33.15 A	DP 485106	Class A
IS 3A DP 485106	UNMK A DP 336575	ob61	58°53'20"	A DP 485106	0°00'00"	8.84 A	DP 485106	Class A
UNMK A DP 336575	PEG 73 DP 567781	ob76	58°53'20"	A DP 336575	0°00'00"	3.33 C		Class A
PEG 73 DP 567781	PEG XII DP 4729	ob273	58°53'20"	A DP 336575	0°00'00"	1.67 C		Class A
PEG XII DP 4729	PEG SO 17959	ob36	136°38'50"	A DP 485106	0°00'00"	4.60 A	DP 485106	Class A
PEG SO 17959	IS SO 17959	ob50	136°38'50"	A SO 17959	0°00'00"	3.25 A	SO 17959	Class A
PEG NO REC DP 53948	PEG I DP 53948	ob39	127°33'00"	A DP 53948	-0°01'00"	3.50 A	DP 53948	Class A
PEG IV DP 53948	PEG XXIII DP 46251	ob40	119°38'00"	A DP 53948	-0°01'00"	17.16 A	DP 53948	Class A
PEG 73 DP 567781	UNMK 128 DP 567781	ob274	24°05'00"	C		2.69 C		Class A
UNMK 128 DP 567781	DISK 74 DP 567781	ob328	24°05'00"	C		1.01 C		Class A
IS 1K DP 485106	UNMK 143 DP 567781	ob299	113°00'00"	A DP 46251	0°00'00"	4.57 C		Class A
UNMK 143 DP 567781	PEG 32 DP 567781	ob352	113°00'00"	A DP 46251	0°00'00"	17.43 C		Class A
PEG 32 DP 567781	PEG 31 DP 567781	ob298	113°00'00"	A DP 46251	0°00'00"	22.66 C		Class A
PEG 31 DP 567781	PEG XXVIII DP 46251	ob266	113°00'00"	A DP 46251	0°00'00"	11.42 C		Class A

Mark and Vector

Survey Number DP 567781
 Meridional Circuit Mount Pleasant 2000

From	To	Code	Bearing	Adpt Surv	Bearing Correction	Distance	Adpt Surv	Class
PEG XXVIII DP 46251	PEG I DP 46251	ob153	139°43'00"	A DP 46251	0°00'00"	19.93	A DP 46251	Class A
PEG I DP 46251	PEG 29 DP 567781	ob26	229°42'30"	A DP 485106	0°00'00"	35.11	C	Class A
PEG 29 DP 567781	PEG 28 DP 567781	ob216	229°42'30"	A DP 485106	0°00'00"	27.57	C	Class A
PEG 28 DP 567781	PEG 27 DP 567781	ob215	229°42'30"	A DP 485106	0°00'00"	37.23	C	Class A
PEG 27 DP 567781	PEG 26 DP 567781	ob213	229°42'30"	A DP 485106	0°00'00"	27.61	C	Class A
PEG 26 DP 567781	PEG 1A DP 485106	ob212	229°42'30"	A DP 485106	0°00'00"	37.38	C	Class A
PEG 1A DP 485106	PEG 25 DP 567781	ob25	229°42'30"	A DP 508120	0°00'00"	1.80	C	Class A
PEG 25 DP 567781	PEG 1E DP 508120	ob120	229°42'30"	A DP 508120	0°00'00"	147.45	C	Class A
PEG 1E DP 508120	PEG 1F DP 508120	ob24	351°18'00"	A DP 508120	0°00'00"	86.20	A DP 508120	Class A
PEG 1F DP 508120	IS 1D DP 508120	ob44	350°33'30"	A DP 508120	0°00'00"	20.40	A DP 508120	Class A
IS 1D DP 508120	MA 1C DP 508120	ob41	54°20'00"	A DP 508120	0°00'00"	33.87	A DP 508120	Class A
MA 1C DP 508120	PEG SO 17959	ob42	61°01'00"	A SO 17959	0°00'00"	38.98	A SO 17959	Class A
PEG SO 17959	PEG 24 DP 567781	ob43	78°22'00"	A SO 17959	0°00'00"	21.85	C	Class A
PEG 24 DP 567781	IS SO 17959	ob283	78°22'00"	A SO 17959	0°00'00"	2.91	C	Class A
IS SO 17959	UNMK 103 DP 567781	ob23	23°23'00"	A SO 17959	0°00'00"	2.57	C	Class A
UNMK 103 DP 567781	PEG 85 DP 567781	ob301	23°23'00"	A SO 17959	0°00'00"	4.43	C	Class A
PEG 85 DP 567781	PEG 1C DP 485106	ob285	23°23'00"	A SO 17959	0°00'00"	1.90	C	Class A
PEG 1C DP 485106	NAIL (3) SO 17959	ob21	321°30'00"	A SO 17959	0°00'00"	12.50	A SO 17959	Class A
PEG (1) SO 17959	PEG 1B DP 508120	ob45	58°53'20"	A DP 485106	0°00'00"	10.60	A DP 485106	Class A
PEG 1B DP 508120	UNMK U3 DP 485106	ob46	328°53'20"	A DP 485106	0°00'00"	6.00	A DP 485106	Class A
UNMK U3 DP 485106	PEG 58 DP 565618	ob48	328°53'20"	A DP 485106	0°00'00"	1.40	A DP 485106	Class A
PEG 31 DP 565618	PEG 31 DP 485106	ob18	291°21'40"	A DP 508120	0°00'00"	70.69	A DP 508120	Class A
PEG 31 DP 485106	MA 3H DP 485106	ob16	344°34'00"	A DP 485106	0°00'00"	6.66	A DP 485106	Class A
MA 3H DP 485106	MA 3G DP 485106	ob52	45°17'30"	A DP 485106	0°00'00"	44.88	A DP 485106	Class A



Mark and Vector

Survey Number DP 567781

Meridional Circuit Mount Pleasant 2000

From	To	Code	Bearing	Adpt Surv	Bearing Correction	Distance	Adpt Surv	Class
MA 3G DP 485106	PEG (C) DP 69379	ob53	124°39'50"	A DP 485106	0°00'00"	23.12 A DP 485106	Class A	
PEG (C) DP 69379	UNMK 1B DP 498616	ob54	49°23'00"	A DP 498616	0°00'00"	19.84 A DP 498616	Class A	
UNMK 1B DP 498616	BD 1C DP 498616	ob55	133°08'00"	A DP 498616	0°00'00"	5.91 A DP 498616	Class A	
BD 1C DP 498616	BD 1D DP 498616	ob56	73°47'00"	A DP 498616	0°00'00"	5.02 A DP 498616	Class A	
BD 1D DP 498616	BD 1E DP 498616	ob57	44°58'00"	A DP 498616	0°00'00"	13.41 A DP 498616	Class A	
BD 1E DP 498616	BD 1F DP 498616	ob58	57°15'00"	A DP 498616	0°00'00"	5.36 A DP 498616	Class A	
BD 1F DP 498616	PEG DP 69379	ob59	318°50'00"	A DP 498616	0°00'00"	7.65 A DP 498616	Class A	
PEG DP 69379	PEG DP 69379	ob60	49°23'00"	A DP 69379	-0°01'00"	20.27 A DP 69379	Class A	
PEG DP 69379	PEG XLI DP 53948	ob327	136°38'00"	A DP 69379	-0°01'00"	15.66 A DP 69379	Class A	
PEG XLI DP 53948	UNMK DP 53948	ob306	53°49'30"	A DP 53948	-0°01'00"	0.95 A DP 53948	Class A	
UNMK DP 53948	DISK 74 DP 567781	ob63	136°37'50"	A DP 53948	-0°01'00"	46.23 C	Class A	
DISK 74 DP 567781	UNMK DP 53948	ob275	136°37'50"	A DP 53948	-0°01'00"	3.55 C	Class A	
UNMK DP 53948	UNMK DP 69379	ob64	136°37'50"	A DP 53948	-0°01'00"	3.63 A DP 69379	Class A	
UNMK DP 69379	UNMK DP 53948	ob65	136°37'50"	A DP 53948	-0°01'00"	1.75 A DP 69379	Class A	
IS SO 17959	IS SO 17959	ob38	97°02'30"	A SO 17959	0°00'00"	6.80 A SO 17959	Class A	
IS SO 17959	IS 1K DP 485106	ob66	97°02'30"	A SO 17959	0°00'00"	10.43 A SO 17959	Class A	
PEG 1B DP 508120	PEG 13 DP 567781	ob47	58°53'20"	A DP 485106	0°00'00"	3.60 C	Class A	
PEG 13 DP 567781	IS 1F DP 485106	ob282	58°53'20"	A DP 485106	0°00'00"	17.56 C	Class A	
IS 1F DP 485106	IS 1J DP 485106	ob67	58°53'20"	A DP 485106	0°00'00"	22.67 A DP 485106	Class A	
IS 1J DP 485106	UNMK 1E DP 485106	ob69	58°53'20"	A DP 485106	0°00'00"	1.00 A DP 485106	Class A	
UNMK 1E DP 485106	NAIL SO 17959	ob70	58°53'20"	A DP 485106	0°00'00"	31.85 A DP 485106	Class A	
NAIL SO 17959	IS 1G DP 485106	ob71	70°35'00"	A DP 485106	0°00'00"	8.97 A DP 485106	Class A	
IS 1G DP 485106	IS SO 17959	ob72	70°35'00"	A DP 485106	0°00'00"	13.09 A DP 485106	Class A	
UNMK 243 DP 565618	UNMK U5 DP 485106	ob369	58°53'20"	A DP 485106	0°00'00"	21.38 C	Class A	
IS 1F DP 485106	MA 1H DP 485106	ob68	72°19'00"	A DP 485106	0°00'00"	12.81 A DP 485106	Class A	
MA 1H DP 485106	IS 1I DP 485106	ob74	47°57'00"	A DP 485106	0°00'00"	8.04 A DP 485106	Class A	

Mark and Vector

Survey Number DP 567781
 Meridional Circuit Mount Pleasant 2000

From	To	Code	Bearing	Adpt Surv	Bearing Correction	Distance	Adpt Surv	Class
IS II DP 485106	UNMK 1E DP 485106	ob75	35°17'00"	A DP 485106	0°00'00"	3.62 A	DP 485106	Class A
IS 1G DP 485106	IS 1K DP 485106	ob73	82°17'00"	A DP 485106	0°00'00"	22.91 A	DP 485106	Class A
IS 3A DP 485106	PEG SO 17959	ob62	154°44'00"	A DP 485106	0°00'00"	1.41 A	DP 485106	Class A
PEG SO 17959	NAIL SO 17959	ob78	154°44'00"	A DP 485106	0°00'00"	6.03 A	DP 485106	Class A
UNMK U5 DP 485106	UNMK U4 DP 485106	ob31	58°53'20"	A DP 485106	0°00'00"	14.91 A	DP 485106	Class A
UNMK U4 DP 485106	PEG SO 17959	ob35	58°53'20"	A DP 485106	0°00'00"	36.22 A	DP 485106	Class A
UNMK A DP 336575	UNMK DP 336575	ob77	160°35'00"	A DP 336575	0°00'00"	3.19 A	DP 336575	Class A
UNMK DP 336575	PEG SO 17959	ob80	70°35'00"	A DP 336575	0°00'00"	6.76 A	DP 336575	Class A
PEG SO 17959	UNMK DP 336575	ob79	70°35'00"	A DP 485106	0°00'00"	8.52 A	DP 485106	Class A
PEG XII DP 4729	UNMK DP 53948	ob37	91°00'00"	A DP 53948	-0°01'00"	1.20 A	DP 53948	Class A
UNMK DP 53948	UNMK DP 53948	ob81	91°00'00"	A DP 53948	-0°01'00"	1.33 A	DP 53948	Class A
PEG SO 17959	UNMK DP 69379	ob51	70°34'00"	A DP 69379	-0°01'00"	0.94 A	DP 69379	Class A
UNMK DP 69379	UNMK DP 69379	ob83	70°34'00"	A DP 69379	-0°01'00"	1.04 A	DP 69379	Class A
PEG XLI DP 53948	UNMK 128 DP 567781	ob307	136°37'50"	A DP 53948	-0°01'00"	46.73 C		Class A
UNMK 128 DP 567781	UNMK DP 53948	ob329	136°37'50"	A DP 53948	-0°01'00"	2.24 C		Class A
UNMK DP 53948	UNMK DP 69379	ob82	136°37'50"	A DP 53948	-0°01'00"	4.14 A	DP 69379	Class A
UNMK DP 69379	PEG XLII DP 53948	ob84	136°37'50"	A DP 53948	-0°01'00"	2.54 A	DP 69379	Class A
NAIL 2 DP 567781	IT XIII SO 17959	ob112	185°58'00"	M		49.79 M		
MA 3B DP 485106	PEG 10 DP 567781	ob28	238°53'20"	C		8.47 C		Class A
IS 1K DP 485106	UNMK 144 DP 567781	ob300	237°31'00"	C		1.78 C		Class A
UNMK 144 DP 567781	PEG 14 DP 567781	ob353	237°31'00"	C		2.19 C		Class A
PEG 14 DP 567781	PEG 15 DP 567781	ob276	250°28'00"	C		19.83 C		Class A
PEG 15 DP 567781	PEG 16 DP 567781	ob280	254°46'00"	C		1.94 C		Class A
PEG 16 DP 567781	PEG 72 DP 567781	ob277	254°46'00"	C		5.18 C		Class A
PEG 72 DP 567781	PEG 17 DP 567781	ob279	238°50'00"	C		17.45 C		Class A

Mark and Vector

Survey Number DP 567781
Meridional Circuit Mount Pleasant 2000

From	To	Code	Bearing	Adpt Surv	Bearing Distance	Adpt Surv	Class
					Correction		
PEG 17 DP 567781	UNMK 94 DP 567781	ob268	238°50'00" C		3.07 C		Class A
UNMK 94 DP 567781	UNMK 95 DP 567781	ob113	238°50'00" C		1.52 C		Class A
UNMK 95 DP 567781	UNMK 96 DP 567781	ob115	238°50'00" C		1.52 C		Class A
UNMK 96 DP 567781	PEG 18 DP 567781	ob117	238°50'00" C		2.79 C		Class A
PEG 17 DP 567781	PEG 30 DP 567781	ob269	164°19'00" C		2.48 C		Class A
PEG 30 DP 567781	PEG 33 DP 567781	ob288	152°03'00" C		2.21 C		Class A
PEG 33 DP 567781	PEG 34 DP 567781	ob122	139°16'00" C		15.86 C		Class A
PEG 34 DP 567781	PEG 35 DP 567781	ob123	99°01'00" C		24.41 C		Class A
PEG 35 DP 567781	PEG 36 DP 567781	ob254	35°54'00" C		5.48 C		Class A
PEG 36 DP 567781	PEG 37 DP 567781	ob292	89°37'00" C		6.03 C		Class A
PEG 37 DP 567781	UNMK 137 DP 567781	ob290	34°51'00" C		3.73 C		Class A
UNMK 137 DP 567781	UNMK 136 DP 567781	ob343	34°51'00" C		1.56 C		Class A
UNMK 136 DP 567781	UNMK 141 DP 567781	ob342	34°51'00" C		20.45 C		Class A
UNMK 141 DP 567781	UNMK 142 DP 567781	ob349	34°51'00" C		3.18 C		Class A
UNMK 142 DP 567781	PEG 32 DP 567781	ob350	34°51'00" C		3.71 C		Class A
PEG 29 DP 567781	PEG 38 DP 567781	ob217	315°35'00" C		16.13 C		Class A
UNMK 160 DP 567781	PEG 39 DP 567781	ob370	283°05'00" C		1.90 C		Class A
PEG 39 DP 567781	PEG 40 DP 567781	ob263	219°47'00" C		5.70 C		Class A
PEG 40 DP 567781	PEG 41 DP 567781	ob244	281°25'00" C		10.36 C		Class A
UNMK 161 DP 567781	DISK 42 DP 567781	ob372	279°01'00" C		4.89 C		Class A
DISK 42 DP 567781	PEG 43 DP 567781	ob265	263°26'00" C		8.70 C		Class A
PEG 43 DP 567781	DISK 44 DP 567781	ob272	319°16'00" C		8.04 C		Class A
DISK 44 DP 567781	PEG 45 DP 567781	ob270	319°16'00" C		17.21 C		Class A
PEG 45 DP 567781	PEG 18 DP 567781	ob267	290°51'00" C		2.62 C		Class A

Mark and Vector

Survey Number DP 567781

Meridional Circuit Mount Pleasant 2000

From	To	Code	Bearing	Adpt Surv	Bearing Distance Correction	Adpt Surv	Class
PEG 21 DP 567781	PEG 46 DP 567781	ob281	163°31'00" C		2.53 C		Class A
PEG 46 DP 567781	PEG 47 DP 567781	ob223	146°18'00" C		1.40 C		Class A
PEG 47 DP 567781	PEG 48 DP 567781	ob222	158°10'00" C		2.78 C		Class A
PEG 48 DP 567781	PEG 49 DP 567781	ob221	166°30'00" C		1.23 C		Class A
PEG 66 DP 567781	PEG 50 DP 567781	ob224	117°19'00" C		4.33 C		Class A
PEG 50 DP 567781	PEG 51 DP 567781	ob225	117°19'00" C		1.23 C		Class A
PEG 51 DP 567781	PEG 52 DP 567781	ob226	117°19'00" C		20.26 C		Class A
PEG 52 DP 567781	PEG 53 DP 567781	ob227	132°37'00" C		9.41 C		Class A
PEG 53 DP 567781	DISC 67 DP 567781	ob228	132°52'00" C		6.39 C		Class A
DISC 67 DP 567781	PEG 68 DP 567781	ob239	65°00'00" C		24.88 C		Class A
PEG 68 DP 567781	UNMK 133 DP 567781	ob246	111°12'00" C		1.50 C		Class A
UNMK 133 DP 567781	PEG 28 DP 567781	ob337	111°12'00" C		21.97 C		Class A
PEG 27 DP 567781	PEG 69 DP 567781	ob214	312°23'00" C		27.65 C		Class A
PEG 69 DP 567781	PEG 57 DP 567781	ob240	312°37'00" C		10.22 C		Class A
PEG 57 DP 567781	PEG 58 DP 567781	ob230	305°19'00" C		3.34 C		Class A
PEG 58 DP 567781	PEG 59 DP 567781	ob231	297°19'00" C		4.03 C		Class A
PEG 59 DP 567781	PEG 60 DP 567781	ob232	246°40'00" C		3.67 C		Class A
PEG 60 DP 567781	PEG 61 DP 567781	ob233	223°34'00" C		2.13 C		Class A
PEG 61 DP 567781	PEG 62 DP 567781	ob234	297°19'00" C		3.83 C		Class A
PEG 62 DP 567781	PEG 63 DP 567781	ob235	11°04'00" C		2.13 C		Class A
PEG 63 DP 567781	PEG 64 DP 567781	ob236	348°24'00" C		3.22 C		Class A
PEG 64 DP 567781	PEG 93 DP 567781	ob247	315°22'00" C		1.29 C		Class A
PEG 93 DP 567781	PEG 65 DP 567781	ob249	297°17'00" C		10.89 C		Class A
PEG 55 DP 567781	PEG 56 DP 567781	ob219	326°18'00" C		5.34 C		Class A

Mark and Vector

Survey Number DP 567781
Meridional Circuit Mount Pleasant 2000

From	To	Code	Bearing	Adpt Surv	Bearing Distance	Adpt Surv	Class
					Correction		
PEG 56 DP 567781	PEG 23 DP 567781	ob218	304°45'00" C		2.47 C		Class A
PEG 1C DP 485106	PEG 70 DP 567781	ob22	86°07'00" C		17.36 C		Class A
PEG 70 DP 567781	PEG 71 DP 567781	ob287	119°55'00" C		33.64 C		Class A
PEG 71 DP 567781	UNMK 101 DP 567781	ob250	132°23'00" C		3.06 C		Class A
UNMK 101 DP 567781	PEG 26 DP 567781	ob209	132°23'00" C		27.86 C		Class A
PEG 25 DP 567781	PEG 78 DP 567781	ob121	323°56'00" C		26.82 C		Class A
PEG 78 DP 567781	PEG 75 DP 567781	ob297	294°05'00" C		7.59 C		Class A
PEG 54 DP 567781	PEG 77 DP 567781	ob293	325°34'00" C		12.78 C		Class A
PEG 77 DP 567781	PEG 24 DP 567781	ob284	295°35'00" C		3.71 C		Class A
PEG 16 DP 567781	PEG 79 DP 567781	ob278	131°12'00" C		27.77 C		Class A
PEG 79 DP 567781	UNMK 135 DP 567781	ob336	190°23'00" C		0.82 C		Class A
UNMK 135 DP 567781	UNMK 134 DP 567781	ob340	190°23'00" C		1.51 C		Class A
UNMK 134 DP 567781	PEG 36 DP 567781	ob339	190°23'00" C		5.65 C		Class A
PEG 37 DP 567781	PEG 80 DP 567781	ob291	168°43'00" C		3.42 C		Class A
UNMK 156 DP 567781	UNMK 123 DP 567781	ob368	103°05'00" C		1.23 C		Class A
UNMK 123 DP 567781	PEG 81 DP 567781	ob322	103°05'00" C		19.32 C		Class A
PEG 81 DP 567781	UNMK 139 DP 567781	ob252	29°07'00" C		24.61 C		Class A
UNMK 139 DP 567781	UNMK 140 DP 567781	ob346	29°07'00" C		2.23 C		Class A
UNMK 140 DP 567781	PEG 31 DP 567781	ob347	29°07'00" C		3.86 C		Class A
PEG 40 DP 567781	PEG 68 DP 567781	ob245	200°48'00" C		22.60 C		Class A
PEG 53 DP 567781	PEG 82 DP 567781	ob229	62°42'00" C		2.52 C		Class A
PEG 82 DP 567781	PEG 83 DP 567781	ob237	46°32'00" C		5.44 C		Class A
PEG 83 DP 567781	UNMK 129 DP 567781	ob238	5°03'00" C		21.69 C		Class A
UNMK 129 DP 567781	DISK 42 DP 567781	ob330	5°03'00" C		5.50 C		Class A

Mark and Vector

Survey Number DP 567781
Meridional Circuit Mount Pleasant 2000

From	To	Code	Bearing	Adpt Surv	Bearing Distance	Adpt Surv	Class
					Correction		
DISK 44 DP 567781	UNMK 131 DP 567781	ob271	224°49'00" C		4.19 C		Class A
UNMK 131 DP 567781	PEG 50 DP 567781	ob332	224°49'00" C		25.20 C		Class A
PEG 55 DP 567781	PEG 70 DP 567781	ob220	197°39'00" C		30.35 C		Class A
PEG 89 DP 567781	PEG 90 DP 567781	ob294	90°28'00" C		10.50 C		Class A
PEG 90 DP 567781	UNMK 154 DP 567781	ob296	41°29'00" C		20.34 C		Class A
UNMK 154 DP 567781	PEG 71 DP 567781	ob365	41°29'00" C		2.50 C		Class A
PEG 71 DP 567781	PEG 84 DP 567781	ob251	7°04'00" C		17.16 C		Class A
PEG 84 DP 567781	PEG 62 DP 567781	ob242	355°01'00" C		8.12 C		Class A
PEG 85 DP 567781	PEG 87 DP 567781	ob286	152°59'00" C		5.84 C		Class A
PEG 87 DP 567781	PEG 88 DP 567781	ob335	145°34'00" C		12.82 C		Class A
PEG 89 DP 567781	PEG 78 DP 567781	ob295	159°37'00" C		7.97 C		Class A
UNMK 103 DP 567781	UNMK 104 DP 567781	ob302	145°34'00" C		16.24 C		Class A
UNMK 105 DP 567781	PEG 89 DP 567781	ob303	38°20'00" C		3.06 C		Class A
UNMK 154 DP 567781	UNMK 101 DP 567781	ob366	92°47'00" C		3.92 C		Class A
UNMK 101 DP 567781	UNMK 102 DP 567781	ob210	7°04'00" C		18.84 C		Class A
UNMK 102 DP 567781	PEG 61 DP 567781	ob211	1°58'00" C		6.73 C		Class A
UNMK 133 DP 567781	PEG 39 DP 567781	ob338	21°32'00" C		28.01 C		Class A
UNMK 138 DP 567781	UNMK 145 DP 567781	ob345	34°51'00" C		25.43 C		Class A
UNMK 145 DP 567781	UNMK 146 DP 567781	ob355	120°32'00" C		18.19 C		Class A
UNMK 146 DP 567781	UNMK 139 DP 567781	ob357	71°07'00" C		4.48 C		Class A
UNMK 140 DP 567781	UNMK 147 DP 567781	ob348	251°07'00" C		5.45 C		Class A
UNMK 147 DP 567781	UNMK 148 DP 567781	ob358	300°32'00" C		16.24 C		Class A
UNMK 148 DP 567781	UNMK 142 DP 567781	ob359	324°04'00" C		3.32 C		Class A
UNMK 142 DP 567781	UNMK 149 DP 567781	ob351	324°04'00" C		1.99 C		Class A

Mark and Vector

Survey Number DP 567781
Meridional Circuit Mount Pleasant 2000

From	To	Code	Bearing	Adpt Surv	Bearing Distance	Adpt Surv	Class
					Correction		
UNMK 149 DP 567781	UNMK 150 DP 567781	ob360	300°40'00" C		6.91 C		Class A
UNMK 150 DP 567781	UNMK 143 DP 567781	ob361	304°42'00" C		8.29 C		Class A
UNMK 144 DP 567781	UNMK 151 DP 567781	ob354	135°34'00" C		2.26 C		Class A
UNMK 151 DP 567781	UNMK 152 DP 567781	ob362	124°42'00" C		11.34 C		Class A
UNMK 152 DP 567781	UNMK 153 DP 567781	ob363	120°40'00" C		6.39 C		Class A
UNMK 153 DP 567781	UNMK 141 DP 567781	ob364	144°04'00" C		2.41 C		Class A
UNMK 145 DP 567781	UNMK 148 DP 567781	ob356	70°33'00" C		1.95 C		Class A
UNMK 135 DP 567781	UNMK 136 DP 567781	ob341	108°49'00" C		8.21 C		Class A
UNMK 137 DP 567781	UNMK 134 DP 567781	ob344	288°49'00" C		7.56 C		Class A
UNMK 97 DP 567781	UNMK 106 DP 567781	ob118	146°18'00" C		7.02 C		Class A
UNMK 107 DP 567781	UNMK 108 DP 567781	ob308	117°19'00" C		25.65 C		Class A
UNMK 108 DP 567781	UNMK 109 DP 567781	ob309	132°37'00" C		8.81 C		Class A
UNMK 109 DP 567781	PEG 53 DP 567781	ob310	62°42'00" C		1.28 C		Class A
PEG 64 DP 567781	UNMK 110 DP 567781	ob248	348°24'00" C		2.05 C		Class A
UNMK 110 DP 567781	UNMK 111 DP 567781	ob311	297°17'00" C		10.83 C		Class A
UNMK 112 DP 567781	UNMK 100 DP 567781	ob312	326°18'00" C		7.14 C		Class A
PEG 69 DP 567781	UNMK 119 DP 567781	ob241	52°15'00" C		1.94 C		Class A
UNMK 119 DP 567781	UNMK 114 DP 567781	ob318	52°15'00" C		1.22 C		Class A
UNMK 114 DP 567781	DISC 67 DP 567781	ob314	52°15'00" C		2.41 C		Class A
UNMK 98 DP 567781	UNMK 116 DP 567781	ob119	146°18'00" C		6.94 C		Class A
UNMK 117 DP 567781	UNMK 118 DP 567781	ob316	117°19'00" C		25.49 C		Class A
UNMK 118 DP 567781	UNMK 114 DP 567781	ob317	132°37'00" C		15.08 C		Class A
UNMK 119 DP 567781	UNMK 120 DP 567781	ob319	312°37'00" C		14.72 C		Class A
UNMK 120 DP 567781	UNMK 121 DP 567781	ob320	297°19'00" C		25.33 C		Class A

Mark and Vector

Survey Number DP 567781
Meridional Circuit Mount Pleasant 2000

From	To	Code	Bearing	Adpt Surv	Bearing Distance	Adpt Surv	Class
					Correction		
UNMK 122 DP 567781	UNMK 99 DP 567781	ob321	326°18'00" C		6.95 C		Class A
UNMK 160 DP 567781	UNMK 123 DP 567781	ob371	346°48'00" C		4.29 C		Class A
UNMK 94 DP 567781	UNMK 126 DP 567781	ob114	139°16'00" C		21.33 C		Class A
UNMK 126 DP 567781	UNMK 127 DP 567781	ob325	99°01'00" C		29.82 C		Class A
UNMK 127 DP 567781	PEG 37 DP 567781	ob326	34°52'00" C		8.20 C		Class A
UNMK 95 DP 567781	UNMK 124 DP 567781	ob116	139°16'00" C		22.15 C		Class A
UNMK 124 DP 567781	UNMK 125 DP 567781	ob323	99°01'00" C		30.29 C		Class A
UNMK 125 DP 567781	UNMK 123 DP 567781	ob324	71°06'00" C		11.33 C		Class A
PEG 39 DP 567781	UNMK 113 DP 567781	ob264	262°11'00" C		10.24 C		Class A
UNMK 113 DP 567781	UNMK 115 DP 567781	ob313	279°01'00" C		30.78 C		Class A
UNMK 115 DP 567781	UNMK 96 DP 567781	ob315	319°16'00" C		22.94 C		Class A
UNMK 129 DP 567781	UNMK 130 DP 567781	ob331	265°41'00" C		8.87 C		Class A
UNMK 130 DP 567781	UNMK 131 DP 567781	ob334	317°49'00" C		11.18 C		Class A
UNMK 131 DP 567781	UNMK 132 DP 567781	ob333	319°50'00" C		20.35 C		Class A
PEG 80 DP 567781	UNMK 156 DP 567781	ob289	103°05'00" C		3.97 C		Class A
UNMK 156 DP 567781	UNMK 138 DP 567781	ob367	327°06'00" C		4.49 C		Class A
UNMK U3 DP 485106	UNMK 243 DP 565618	ob49	58°53'20" A	DP 485106	0°00'00"	4.79 A DP 565618	Class A
PEG 31 DP 565618	UNMK 243 DP 565618	ob19	111°16'00" A	DP 565618	0°00'00"	1.77 A DP 565618	Class A
RN 22 DP 567781	PEG 25 DP 567781	ob262	138°22'00" M		35.67 M		
PEG 38 DP 567781	UNMK 160 DP 567781	ob253	283°05'00" C		18.59 C		Class A
PEG 41 DP 567781	UNMK 161 DP 567781	ob243	279°01'00" C		11.86 C		Class A
UNMK 161 DP 567781	UNMK 129 DP 567781	ob373	228°25'00" C		7.10 C		Class A
IR 1 DP 508120	PEG SO 17959	ob88	74°07'00" A	DP 508120	0°00'00"	37.25 A DP 508120	



Mark and Vector

Survey Number DP 567781
Meridional Circuit Mount Pleasant 2000

From	To	Code	Bearing	Adpt Surv	Bearing Correction	Distance	Adpt Surv	Class
MA VII DP 565618	IR I DP 485106	ob134	318°37'30"	A DP 565618	0°00'00"	61.05	A DP 565618	

Mark and Vector

Survey Number DP 567781
 Meridional Circuit Mount Pleasant 2000

From	To	Code	Chord Bearing	Arc Length	Radius	Adpt Surv
IS SO 17959	PEG XLII DP 53948	ob374	26°03'00"	0.92	50.00	A DP 53948
PEG XLII DP 53948	UNMK DP 53948	ob375	25°15'00"	1.02	50.00	A DP 53948
UNMK DP 53948	PEG NO REC DP 53948	ob376	31°06'00"	6.94	50.00	C
PEG I DP 53948	PEG III DP 53948	ob377	43°05'00"	13.47	46.50	C
PEG III DP 53948	PEG IV DP 53948	ob378	35°10'00"	5.34	9.50	A DP 53948
PEG XXIII DP 46251	IS 1K DP 485106	ob379	232°19'00"	22.14	34.00	A DP 46251
NAIL (3) SO 17959	MA 1D DP 485106	ob380	345°50'00"	12.74	15.00	A SO 17959
MA 1D DP 485106	PEG (1) SO 17959	ob381	34°34'00"	12.74	15.00	A SO 17959
PEG 10 DP 567781	PEG 11 DP 567781	ob396	266°01'00"	9.32	9.85	C
PEG 11 DP 567781	PEG 12 DP 567781	ob390	261°05'00"	15.17	13.65	C
PEG 12 DP 567781	PEG 31 DP 565618	ob391	197°25'00"	15.17	13.65	C
PEG 18 DP 567781	UNMK 132 DP 567781	ob389	239°50'00"	2.77	187.00	C
UNMK 132 DP 567781	PEG 19 DP 567781	ob386	236°44'00"	17.42	187.00	C
PEG 19 DP 567781	PEG 20 DP 567781	ob393	218°30'00"	5.36	9.85	C
PEG 20 DP 567781	PEG 21 DP 567781	ob392	210°11'00"	3.46	13.65	C
PEG 21 DP 567781	UNMK 97 DP 567781	ob394	223°48'00"	3.03	13.65	C
UNMK 97 DP 567781	UNMK 98 DP 567781	ob382	232°41'00"	1.20	13.65	C
UNMK 98 DP 567781	UNMK 99 DP 567781	ob383	237°43'00"	1.20	13.65	C
UNMK 99 DP 567781	UNMK 100 DP 567781	ob384	242°47'00"	1.21	13.65	C
UNMK 100 DP 567781	PEG 23 DP 567781	ob385	249°51'00"	2.16	13.65	C
PEG 23 DP 567781	PEG 13 DP 567781	ob395	284°15'00"	14.23	13.65	C
PEG 49 DP 567781	PEG 66 DP 567781	ob387	131°48'00"	11.23	22.00	C
PEG 65 DP 567781	PEG 55 DP 567781	ob388	311°48'00"	14.29	28.00	C
PEG 75 DP 567781	PEG 54 DP 567781	ob398	322°07'00"	20.41	167.00	C
PEG 88 DP 567781	PEG 89 DP 567781	ob397	142°13'00"	19.13	161.00	C
UNMK 104 DP 567781	UNMK 105 DP 567781	ob399	142°07'00"	20.05	164.00	C
UNMK 106 DP 567781	UNMK 107 DP 567781	ob400	131°48'00"	11.85	23.20	C
UNMK 111 DP 567781	UNMK 112 DP 567781	ob401	311°48'00"	13.67	26.80	C
UNMK 116 DP 567781	UNMK 117 DP 567781	ob402	131°48'00"	12.47	24.40	C
UNMK 121 DP 567781	UNMK 122 DP 567781	ob403	311°48'00"	13.08	25.60	C

Mark Name	Mark Condition	Description
BD 1C DP 498616		In top of wooden post
BD 1D DP 498616		In top of wooden post
BD 1E DP 498616		In top of wooden post
BD 1F DP 498616		In top of wooden post
DISK 42 DP 567781		in conc. d0.05
DISK 44 DP 567781		in rock
DISK 74 DP 567781		in kerb
IR 1 DP 485106		Flush in seal

Mark and Vector

Survey Number DP 567781
Meridional Circuit Mount Pleasant 2000

Mark Name	Mark Condition	Description
IR I DP 508120		Down 0.25
IR II DP 508120		Flush in seal
IR IX DP 46251		bent over
IS 1D DP 508120		Flush in seal
IS 1F DP 485106		Flush in seal
IS 1G DP 485106		Up 0.1 in rocks
IS 1I DP 485106		Flush in seal
IS 1J DP 485106		Flush in seal
IS 3C DP 485106		Flush in seal
IS 3D DP 485106		Flush in seal
IS 3E DP 485106		Flush in seal
IS X DP 69379		Flush in seal
IT III DP 485106		d0.2
IT III DP 508120		Down 0.3
IT IV DP 485106		d0.3
IT IV DP 508120		Down 0.3
IT VIII DP 485106		Down 0.3
IT VIII DP 69379		Flush in seal
IT XIII SO 17959		Down 0.3
MA 1C DP 508120		Flush in conc channel. MA placed in the old hole of NAIL SO 17959
MA 1D DP 485106		Flush in kerb
MA 1H DP 485106		In rock
MA 3B DP 485106		In rock
MA 3G DP 485106		Flush in conc
MA 3H DP 485106		Flush in conc
MA LXIV DP 46251		flush
MA VII DP 565618		top of kerb
MN I DP 404904		Flush in channel
NAIL SO 17959		Nail in rock
NAIL (3) SO 17959		Flush in conc
RN 1 DP 567781		top of kerb
RN 22 DP 567781		top of kerb
RN 5 DP 567781		top of kerb
RN 7 DP 567781		in channel
RN 8 DP 567781		in channel



Mark and Vector

Survey Number DP 567781
Meridional Circuit Mount Pleasant 2000

Mark Name	Mark Condition	Description
RN 9 DP 567781		in channel
IR IX DP 485106	Searched For and Not Found	Down 0.3
IR V DP 46251	Searched For and Not Found	
IS II SO 17959	Searched For and Not Found	Down 0.02
IT XI DP 69379	Searched For and Not Found	Flush in seal
PEG SO 17959	Searched For and Not Found	
PEG 1A DP 485106	Searched For and Not Found	

*** End of Report ***



Land Registration District

Canterbury

Plan Number

DP 567781

Territorial Authority (the Council)

Christchurch City Council

Council Reference

RMA/2020/1132

195 Peterborough St, Christchurch 8013
PO Box 895, Christchurch 8140

0800 FOX SURVEY
0800 369 787

info@foxsurvey.co.nz
www.foxsurvey.co.nz

Schedule of Easements			
Purpose	Shown	Servient Tenement (Burdened Land)	Dominant Tenement (Benefited Land)
Right of way	OA, OB, Y, Z	Lot 17 hereon	Lots 1, 2, 7 & 8 DP 565618
Right to drain water	OA, OB, Y, Z	Lot 17 hereon	Lot 14 DP 565618

Schedule / Memorandum

Land Registration District

Canterbury

Survey Number

LT 567781

Territorial Authority (the Council)

Christchurch City

Amalgamation Conditions

Last Edited: 29 Mar 2022 15:28:26

That Lot 17 hereon (Legal Access) be held as undivided one-sixteenth shares by the owners of Lots 1-16 hereon as tenants in common in the said shares and that individual records of title issue. (Request Number 1661674)

Schedule of Existing Easements in Gross

Last Edited: 18 Jul 2022 09:56:24

<u>Purpose</u>	<u>Shown</u>	<u>Burdened Land</u> <u>(Servient Tenement)</u>	<u>Creating Document Reference</u>
Right of Way	EA	Lot 17	TE 502016.4
Right to convey water, electric power, telephonic communications	EA	Lot 17	GN 931028.1
Right of way, right to convey water, electric power, telephonic communications	EC, ED, EJ, EL, EN	Lot 17	GN 931028.1
Right to convey electric power	EH	Lot 17	E 6051722.1
Right to convey telecommunications and computer media	EA, EB, EJ, EM, EI, EK, OA, EC, ED, EL, OB	Lot 17	EI 10053973.3
Right to convey water	EC, ED, EE, EF	Lot 17	TE 544243.1

Schedule of Existing Easements

Last Edited: 13 Jun 2022 14:46:54

<u>Purpose</u>	<u>Shown</u>	<u>Burdened Land</u> <u>(Servient Tenement)</u>	<u>Creating Document Reference</u>
Right of Way	EA, EC, EE, GA GB	Lot 17 Lot 16	EC 825453.24 EC 825453.24
Right of way, right to drain water and sewage, right to convey water, electricity, telecommunications and computer media	EA, EB, EJ, EI, EC, ED	Lot 17	EI 10053973.2
Right of way, right to drain water, sewage	EA	Lot 17	EC A203486.19
Right of way, right to drain water and sewage, right to convey water, electricity, telecommunications and computer media	EA, EB, EI, EJ, EK, EL, EM, EC, ED, EN	Lot 17	EI 10866010.6
Right of way, right to drain water and sewage, right to convey electricity and telecommunications	OB	Lot 17	EI 12350498.7

Schedule / Memorandum

Land Registration District

Canterbury

Survey Number

LT 567781

Territorial Authority (the Council)

Christchurch City

Memorandum of Easements

Last Edited: 25 May 2022 16:48:57

<u>Purpose</u>	<u>Shown</u>	<u>Burdened Land</u> (<u>Servient Tenement</u>)	<u>Benefited Land</u> (<u>Dominant Tenement</u>)
Right of way, right to convey electricity and telecommunications. right to drain sewage and water	EA, EB, EC, ED, EE, EF, GA, EH, EI, EJ, EK, EL, EM, EN, OA, OB, Y, Z	Lot 17	Lot 1, Lot 2, Lot 3, Lot 4, Lot 5, Lot 6, Lot 7, Lot 8, Lot 9, Lot 10, Lot 11, Lot 12, Lot 13, Lot 14, Lot 15, Lot 16
Right of way, right to convey electricity, water and telecommunications. right to drain sewage and water	A	Lot 2	Lot 1, Lot 3, Lot 4, Lot 5
Right of way, right to convey electricity, water and telecommunications. right to drain sewage and water	B	Lot 3	Lot 1, Lot 2, Lot 4, Lot 5
Right of way, right to convey electricity, water and telecommunications. right to drain sewage and water	C	Lot 4	Lot 1, Lot 2, Lot 3, Lot 5
	D	Lot 5	Lot 1, Lot 2, Lot 3, Lot 4
	E	Lot 7	Lot 6, Lot 8, Lot 9, Lot 10, Lot 11
Right of way and right to convey electricity, water and telecommunications. right to drain sewage and water	F	Lot 8	Lot 6, Lot 7, Lot 9, Lot 10, Lot 11
	G	Lot 9	Lot 6, Lot 7, Lot 8, Lot 10, Lot 11
	H	Lot 10	Lot 6, Lot 7, Lot 8, Lot 9, Lot 11
	I	Lot 11	Lot 6, Lot 7, Lot 8, Lot 9, Lot 10
	J	Lot 13	Lot 14, Lot 15
	K	Lot 14	Lot 13, Lot 15
Right to convey water, electricity and telecommunications, right to drain sewage and water	E	Lot 7	Lot 12
	F	Lot 8	Lot 12
	G	Lot 9	Lot 12
	H	Lot 10	Lot 12
	I	Lot 11	Lot 12
Right to drain water and sewage	A	Lot 2	Lot 7, Lot 8, Lot 9
	B	Lot 3	Lot 7, Lot 8, Lot 9
	C	Lot 4	Lot 7, Lot 8, Lot 9
	D	Lot 5	Lot 7, Lot 8, Lot 9
	O	Lot 5	Lot 9
	E	Lot 7	Lot 13, Lot 14
	F	Lot 8	Lot 13, Lot 14
	G	Lot 9	Lot 13, Lot 14
	H, P	Lot 10	Lot 13, Lot 14
	Q	Lot 14	Lot 13
	U	Lot 8	Lot 7
	I	Lot 11	Lot 13, Lot 14
Right to drain water	A	Lot 2	Lot 6
	L	Lot 2	Lot 1, Lot 3, Lot 4, Lot 5, Lot 7, Lot 8, Lot 9
	T	Lot 2	Lot 1
	B	Lot 3	Lot 6

Page 2 of 4

Schedule / Memorandum

Land Registration District

Canterbury

Survey Number

LT 567781

Territorial Authority (the Council)

Christchurch City

Memorandum of Easements

Last Edited: 25 May 2022 16:48:57

<u>Purpose</u>	<u>Shown</u>	<u>Burdened Land</u> (<u>Servient Tenement</u>)	<u>Benefited Land</u> (<u>Dominant Tenement</u>)
	M	Lot 3	Lot 4
	N	Lot 3	Lot 1, Lot 2, Lot 4, Lot 5, Lot 7, Lot 8, Lot 9
	C	Lot 4	Lot 6
	D	Lot 5	Lot 6
Right of support, right to maintain wall	R	Lot 6	Lot 1, Lot 2, Lot 3, Lot 4, Lot 5, Lot 7
	S	Lot 7	Lot 1, Lot 2, Lot 3, Lot 4, Lot 5, Lot 6
Right of way (access to maintain retaining wall)	A	Lot 2	Lot 6, Lot 7
	B	Lot 3	Lot 6, Lot 7
	C	Lot 4	Lot 6, Lot 7
	D	Lot 5	Lot 6, Lot 7

Memorandum of Easements in Gross

Last Edited: 28 Mar 2022 13:38:47

<u>Purpose</u>	<u>Shown</u>	<u>Burdened Land</u> (<u>Servient Tenement</u>)	<u>Grantee</u>
Right to convey electricity	A	Lot 2	Orion NZ Ltd
	B	Lot 3	Orion NZ Ltd
	C	Lot 4	Orion NZ Ltd
	D	Lot 5	Orion NZ Ltd
	E	Lot 7	Orion NZ Ltd
	F	Lot 8	Orion NZ Ltd
	G	Lot 9	Orion NZ Ltd
	H	Lot 10	Orion NZ Ltd
	I	Lot 11	Orion NZ Ltd
	J	Lot 13	Orion NZ Ltd
	K	Lot 14	Orion NZ Ltd
	Y, Z	Lot 17	Orion NZ Ltd
Right to convey telecommunications	A	Lot 2	Enable Networks Ltd
	B	Lot 3	Enable Networks Ltd
	C	Lot 4	Enable Networks Ltd
	D	Lot 5	Enable Networks Ltd
	E	Lot 7	Enable Networks Ltd
	F	Lot 8	Enable Networks Ltd
	G	Lot 9	Enable Networks Ltd
	H	Lot 10	Enable Networks Ltd
	I	Lot 11	Enable Networks Ltd
	J	Lot 13	Enable Networks Ltd
	K	Lot 14	Enable Networks Ltd
	EA, EB, EC, ED, EE, EF, GA, EH, EI, EJ, EK, EL, EM, EN, OA, OB, Y, Z	Lot 17	Enable Networks Ltd
Right to convey water	EB, GA, EH, EI, EK, EM, OA, OB, Y, Z	Lot 17	Christchurch City Council

Schedule / Memorandum

Land Registration District

Canterbury

Survey Number

LT 567781

Territorial Authority (the Council)

Christchurch City

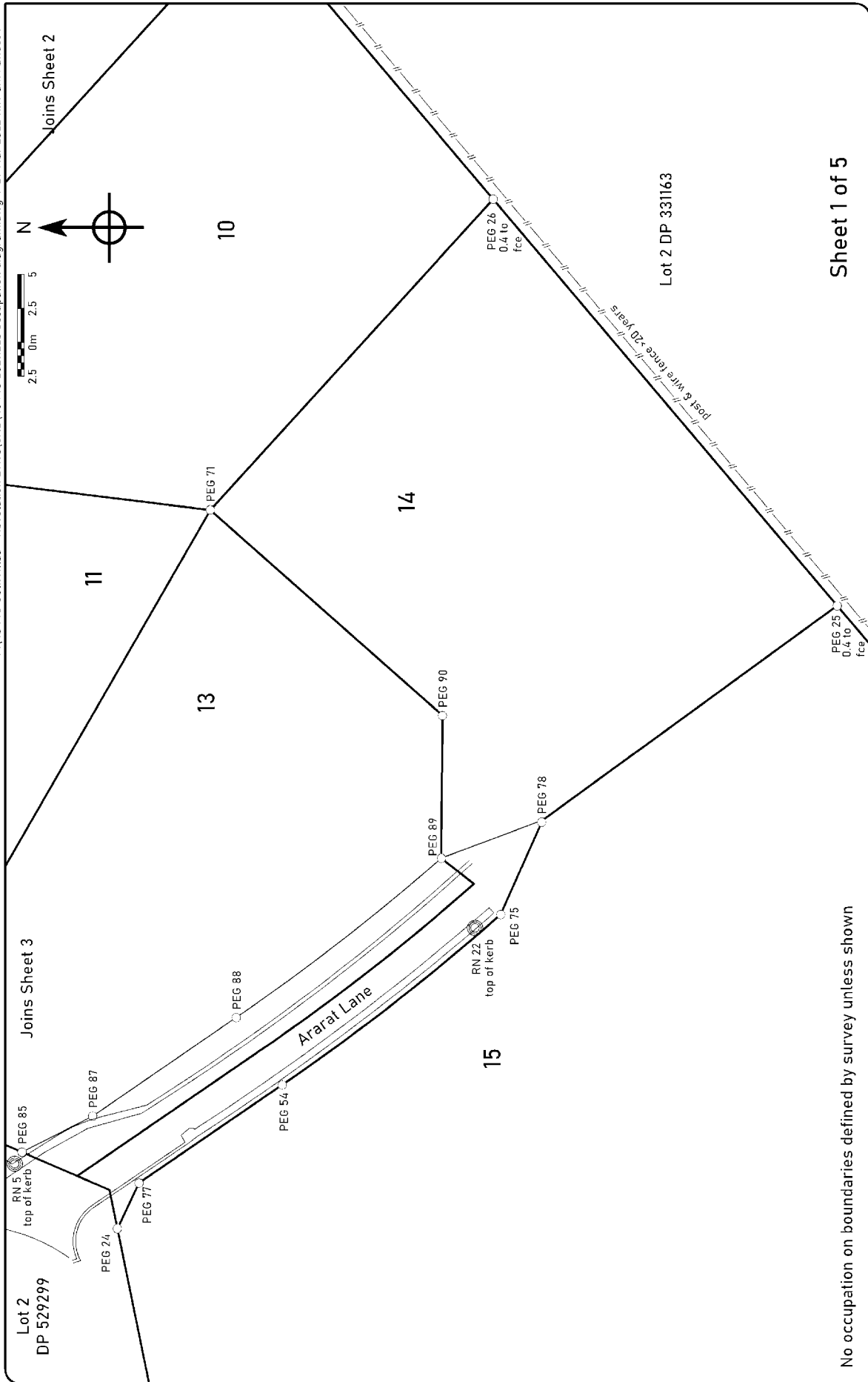
Schedule of Easements in Gross

Last Edited: 20 Jun 2022 08:51:02

<u>Purpose</u>	<u>Shown</u>	<u>Burdened Land</u> <u>(Servient Tenement)</u>	<u>Grantee</u>
Right to convey electricity	EA, EC, ED, EE, EF, EI, EJ, EK, EL, EN, OA, OB	Lot 17	Orion NZ Ltd

Occupation Diagram

P:\45446 GethV\Illias - Revelation Drive\CAD\45446 2021\223 occupation diagram.dwg : 29 Mar 2022 11:19 am : Sheet 1



Sheet 1 of 5

No occupation on boundaries defined by survey unless shown

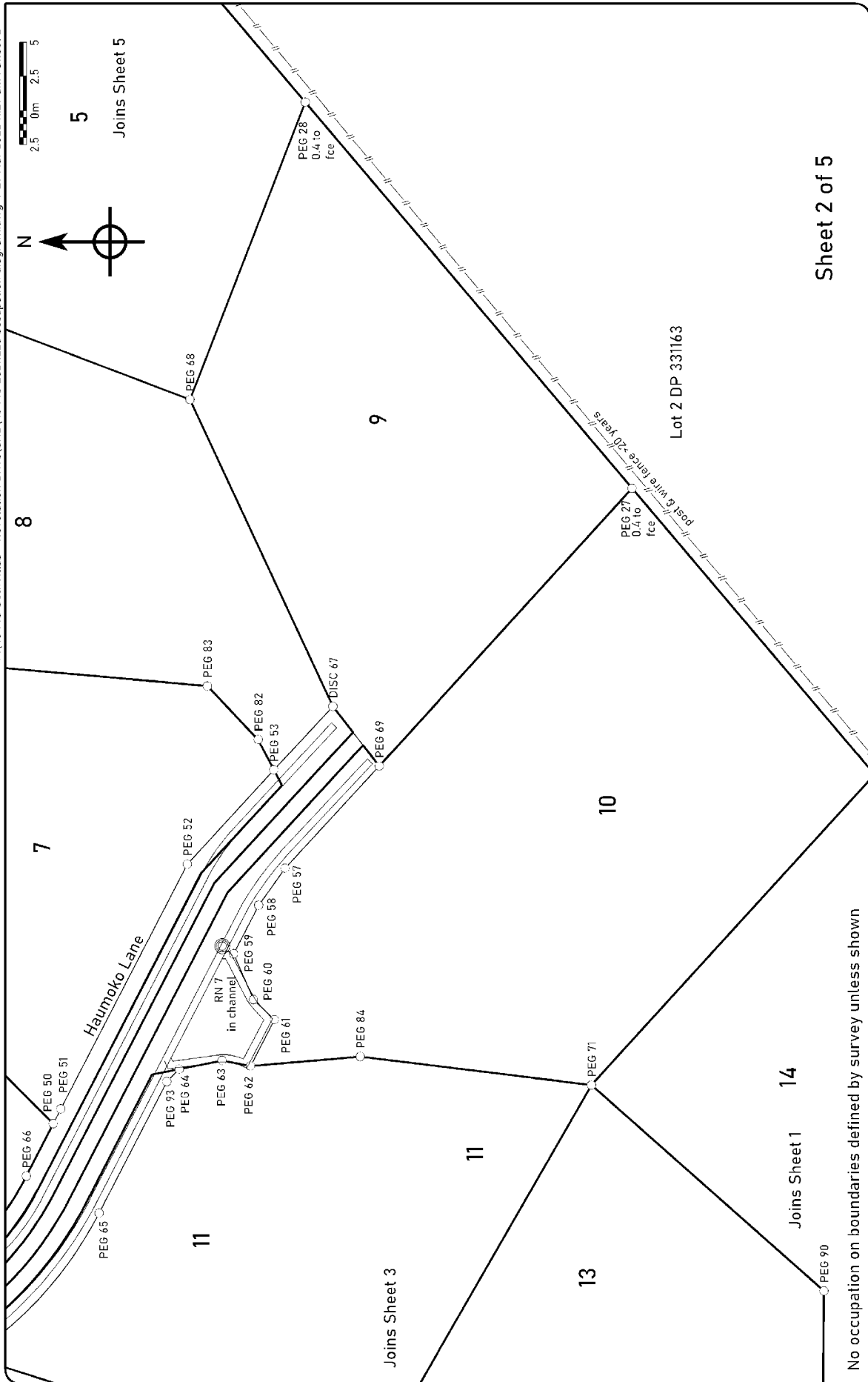
Occupation Diagram DP 567781

www.foxsurvey.co.nz
0800 FOX SURVEY
P O Box 895
CHRISTCHURCH

No.	Revision	Appr.	Date	Scale	N.T.S.	Job No.
D						4544G
C				Designed		Rev.
B				Drawn	ADJL	
A				Date	01/02/2022	

Occupation Diagram

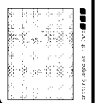
P:\4544G GethVillas - Revelation Drive\CAD\4544G 2021\1223 occupation diagram.dwg : 29 Mar 2022 11:27 am : Sheet 2



Sheet 2 of 5

Occupation Diagram DP 567781

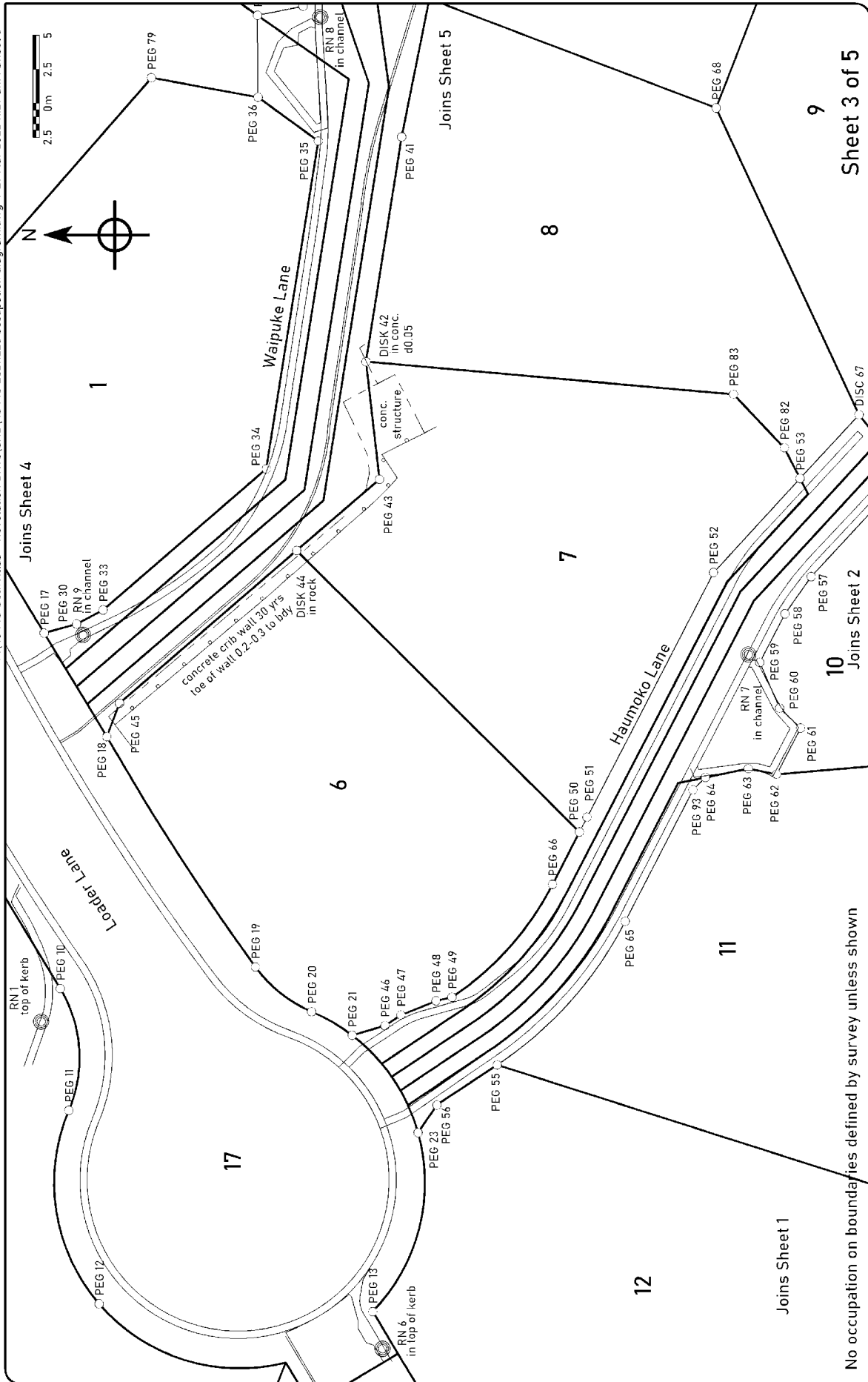
www.foxsurvey.co.nz
0800 FOX SURVEY
P O Box 895
CHRISTCHURCH



No.	Revision	Appr.	Date	Scale	N.T.S.	Job No.
D						4544G
C				Designed		
B				Drawn	ADJL	
A				Date	01/02/2022	Rev.

Occupation Diagram

P:\4544G GethVillas - Revelation Drive\CAD\4544G 2021\1223 occupation diagram.dwg : 29 Mar 2022 11:27 am : Sheet 3

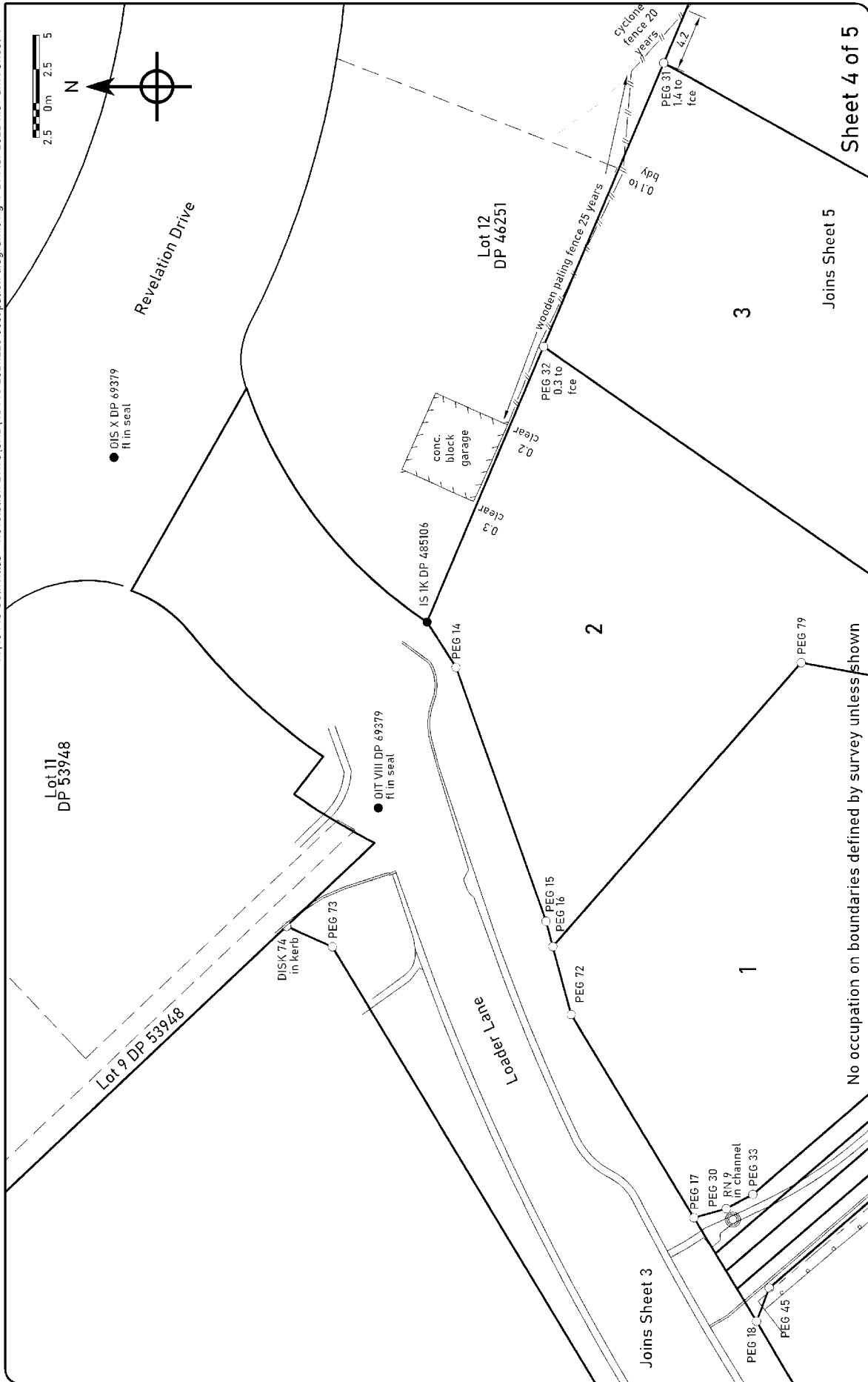


No occupation on boundaries defined by survey unless shown

www.foxsurvey.co.nz 0800 FOX SURVEY P.O. Box 895 CHRISTCHURCH		Occupation Diagram DP 567781		Job No. 4544G	
Scale		N.T.S.		Designed	
Drawn		ADJL		Date	
Revision		No.		Date	
Appr.		Date		Revision	
Date		Date		Date	
Date		Date		Date	

Occupation Diagram

P:\4544G GethVillas - Revelation Drive\CAD\4544G 2021\1223 occupation diagram.dwg : 29 Mar 2022 11:37 am : Sheet 4



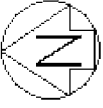
Sheet 4 of 5

Occupation Diagram
DP 567781

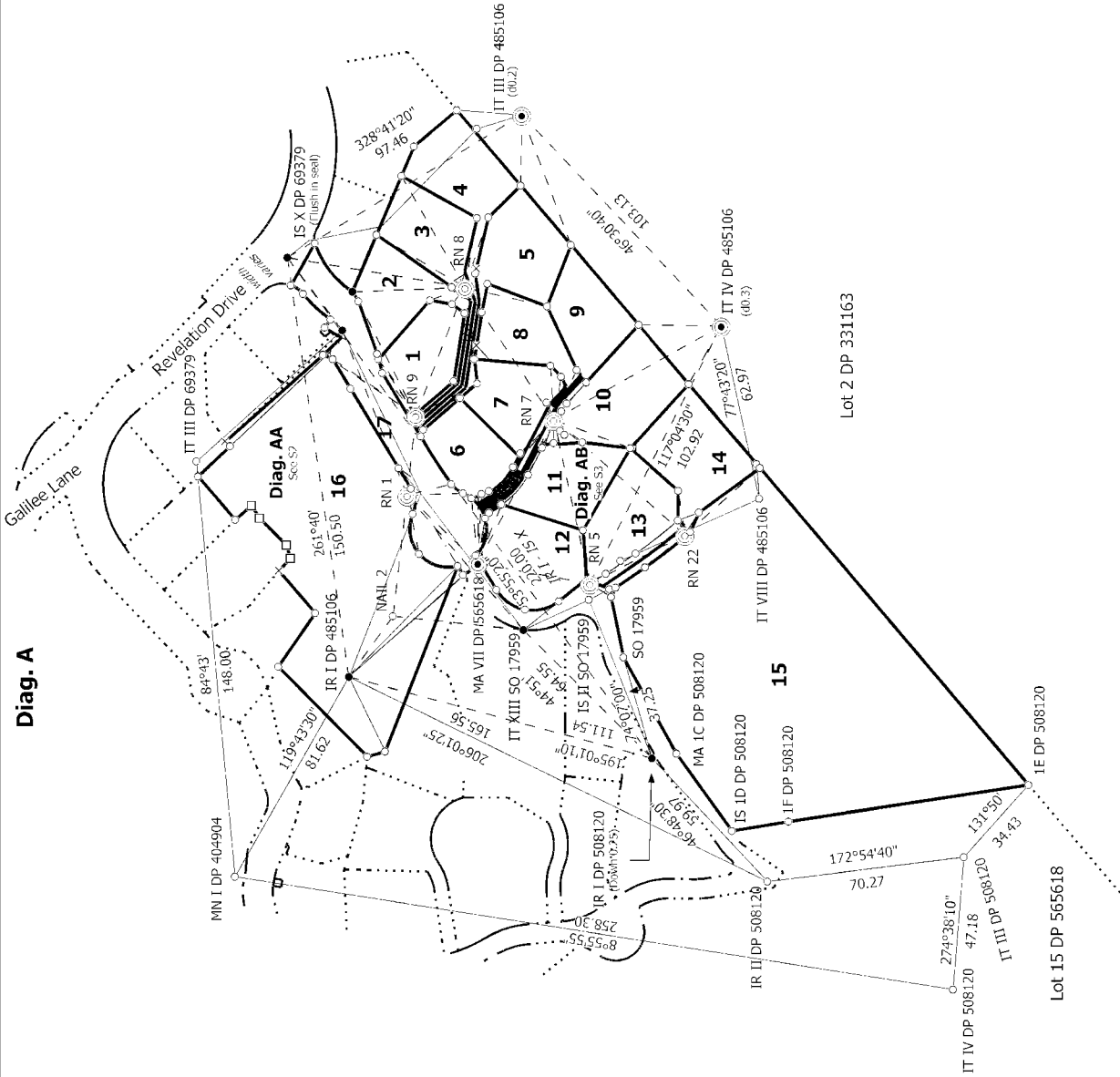
No occupation on boundaries defined by survey unless shown

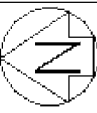
www.foxsurvey.co.nz
0800 FOX SURVEY
P O Box 895
CHRISTCHURCH

No.	Revision	Appr.	Date	Scale	N.T.S.	Job No.
D						4544G
C				Designed		
B				Drawn	ADJL	
A				Date	01/02/2022	Rev.

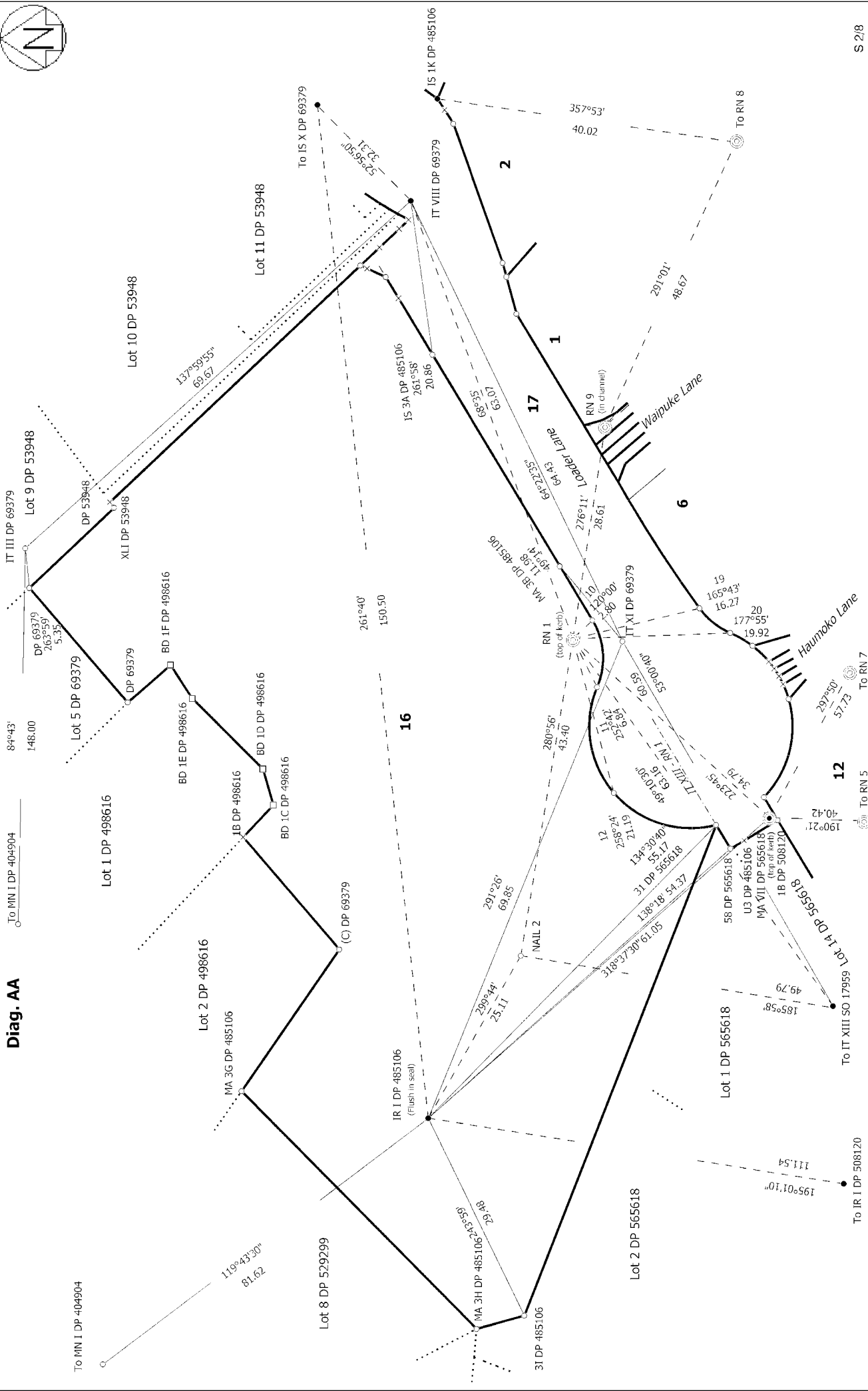


Diag. A

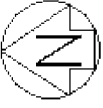




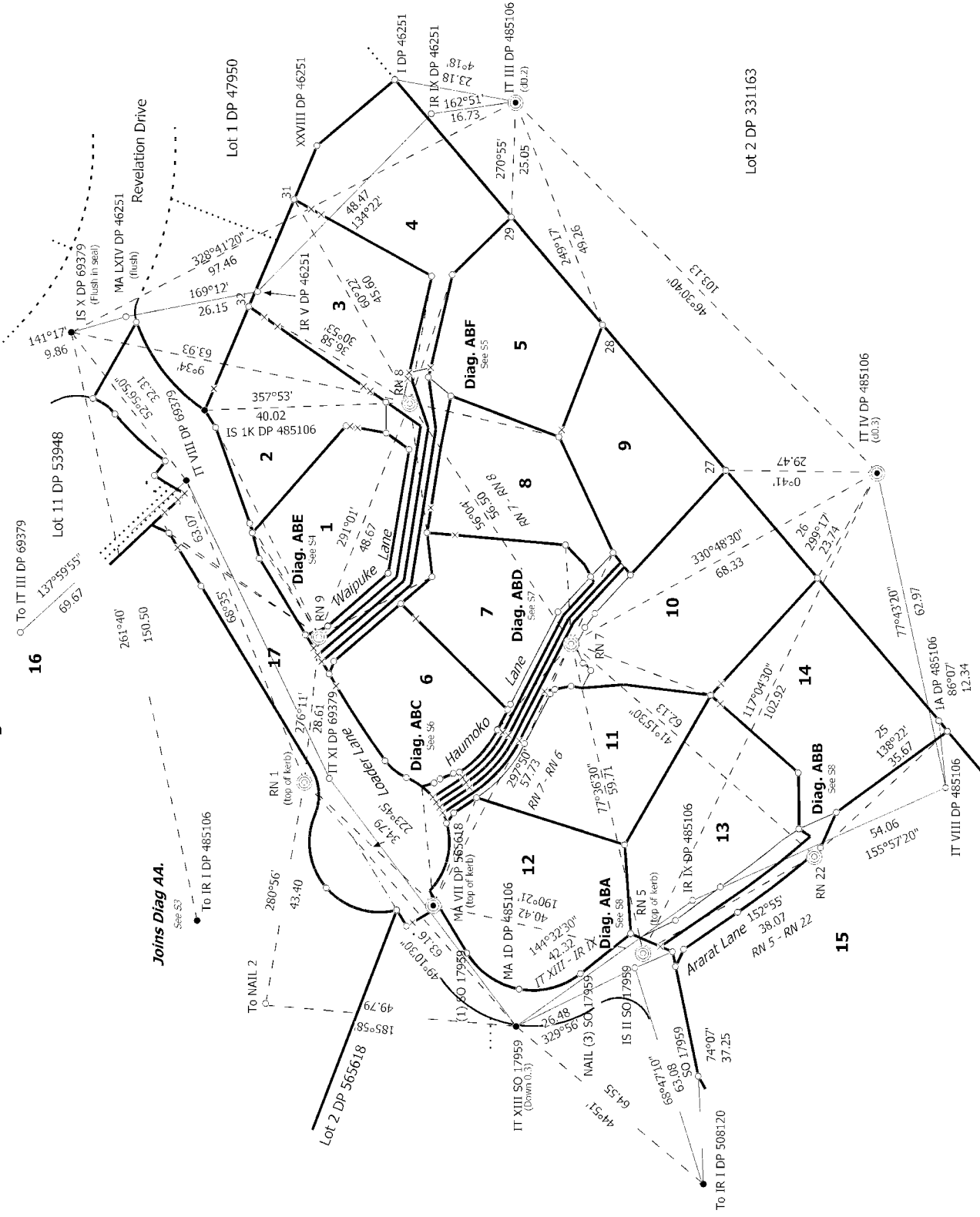
Diag. AA



Land District: Canterbury	Surveyor: Alexander David John Liggitt Firm: Fox and Associates Date of Survey: 3/02/2022	Record of Survey DP 567781 Deposited on: 4/07/2022
<p>Lots 1 to 17 being a Subdivision of Lots 1 & 3 DP 508120</p> <p>Digitally Generated Plan Generated on: 04/08/2022 12:34pm Page 34 of 49</p>		S 2/8

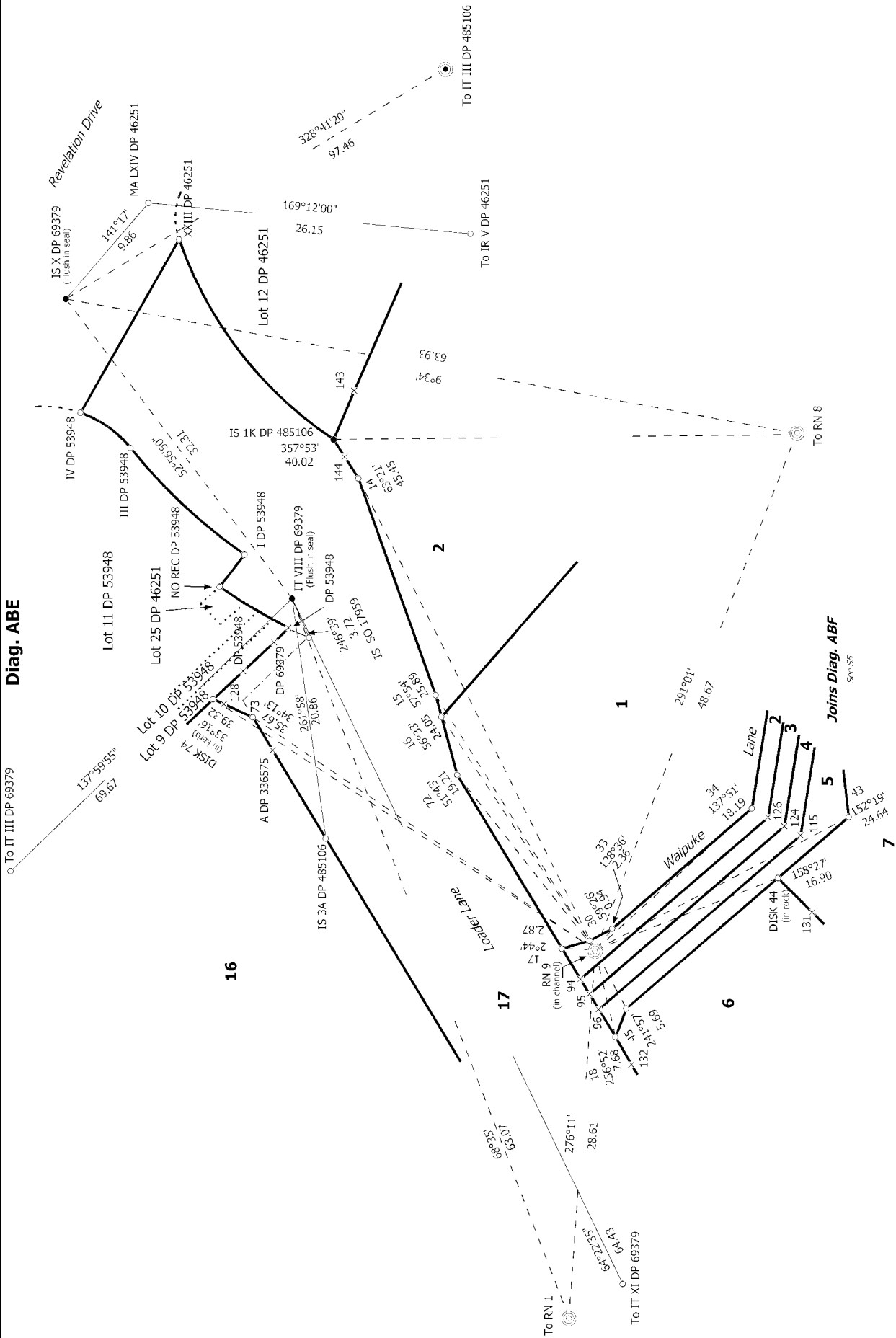


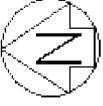
Diag. AB





Diag. ABE

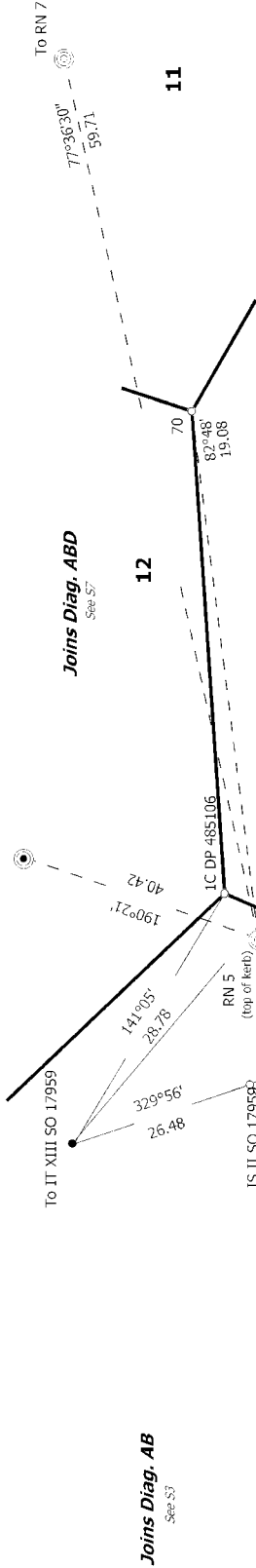




Diag. ABA

Joins Diag. ABC
See 56

To MA VII DP 565618



Joins Diag. ABD
See 57

To RN 7

Joins Diag. AB
See 53

To IT XIII SO 17959

To IT VIII DP 485106

To IR I DP 508120

To IR IX DP 485106

To IT VIII DP 485106

To RN 22

To RN 5

To RN 7

To RN 22

To RN 22

To RN 22

To RN 22

To RN 22

To RN 22

To RN 22

To RN 22

To RN 22

To RN 22

To RN 22

To RN 22

To RN 22

To RN 22

To RN 22

To RN 22

To RN 22

To RN 22

To RN 22

To RN 22

To RN 22

To RN 22

To RN 22

To RN 22

To RN 22

To RN 22

To RN 22

To RN 22

To RN 22

To RN 22

To RN 22

To RN 22

To RN 22

To RN 22

To RN 22

To RN 22

Diag. ABB

Joins Diag. ABA

To RN 5

To RN 7

To RN 22

To RN 22

To RN 22

To RN 22

To RN 22

To RN 22

To RN 22

To RN 22

To RN 22

To RN 22

To RN 22

To RN 22

To RN 22

To RN 22

To RN 22

To RN 22

To RN 22

To RN 22

To RN 22

To RN 22

To RN 22

To RN 22

To RN 22

To RN 22

To RN 22

To RN 22

To RN 22

To RN 22

To RN 22

To RN 22

To RN 22

To RN 22

To RN 22

To RN 22

Lots 1 to 17 being a Subdivision of Lots 1 & 3 DP 508120

Land District: Canterbury

Digitally Generated Plan

Generated on: 04/08/2022 12:34pm Page 40 of 49

Surveyor: Alexander David John Liggitt

Firm: Fox and Associates

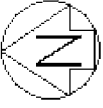
Date of Survey: 3/02/2022

Record of Survey

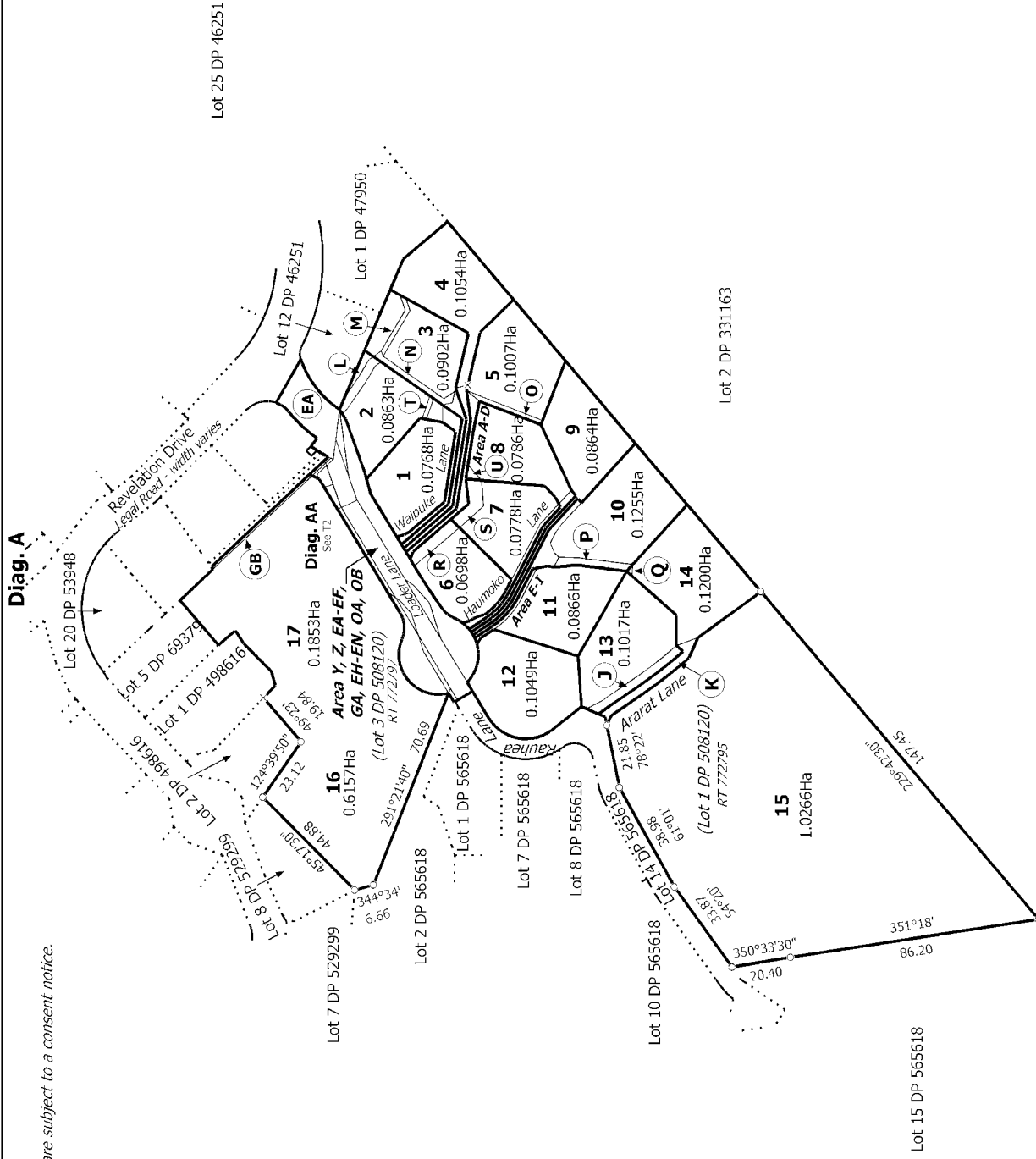
DP 567781

Deposited on: 4/07/2022

S 8/8



Note:
Lots 1 to 16 and Areas R & S are subject to a consent notice.



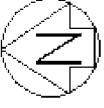
Analgamation Condition:
That Lot 17 hereon (Legal Access) be held as undivided one-sixteenth shares by the owners of Lots 1-16 hereon as tenants in common in the said shares and that individual records of title issue.
(Request Number 1661674)

Land District: Canterbury
Digitally Generated Plan
Generated on: 04/08/2022 12:34pm Page 41 of 49

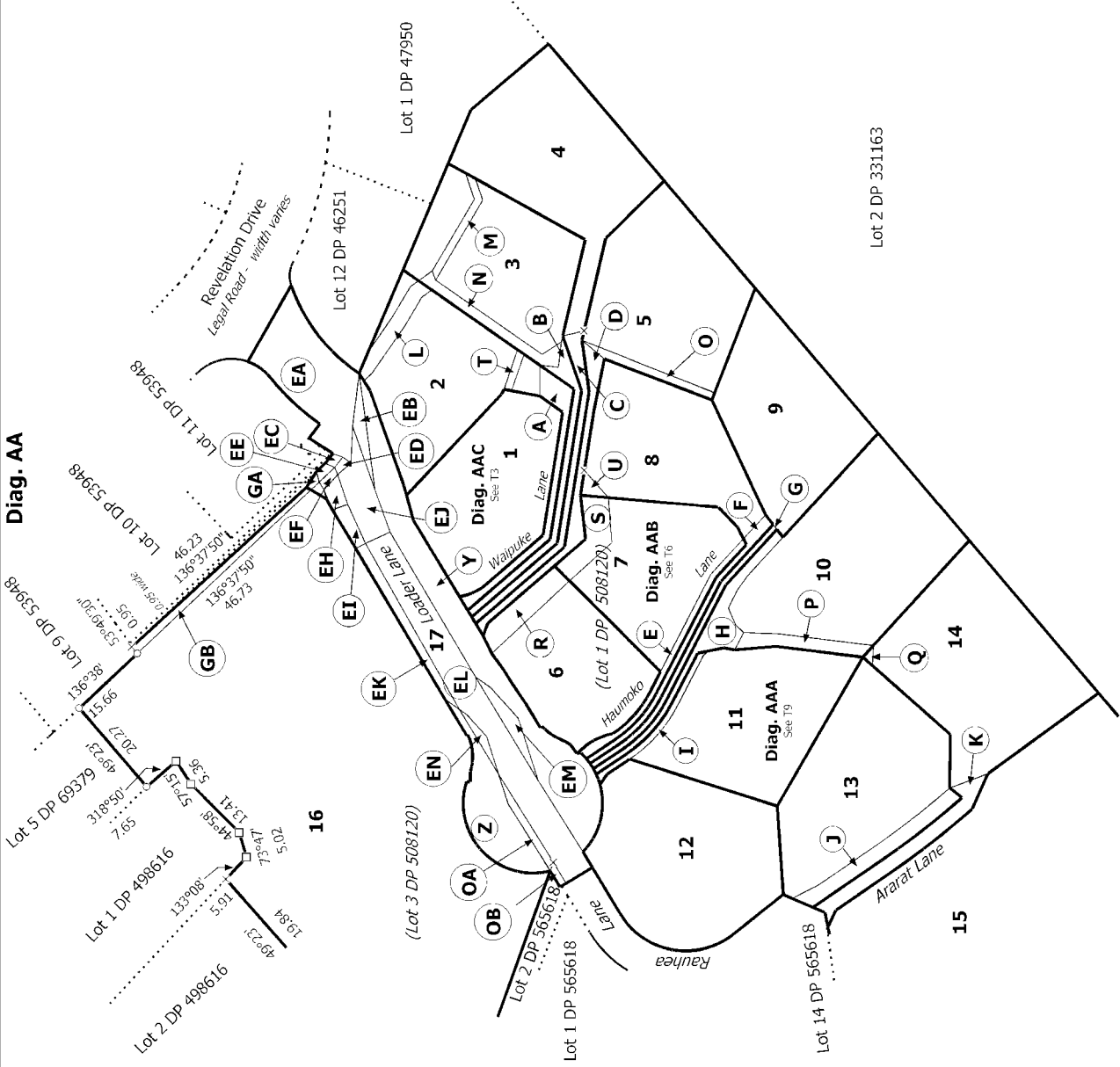
Lots 1 to 17 being a Subdivision of Lots 1 & 3 DP 508120

Surveyor: Alexander David John Liggitt
Firm: Fox and Associates
Date of Survey: 3/02/2022

Record of Survey
DP 567781
Deposited on: 4/07/2022



Diag. AA



T 2/9

Land District: Canterbury

Digitally Generated Plan

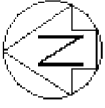
Generated on: 04/06/2022 12:34pm F... 42 of 44

Lots 1 to 17 being a Subdivision of Lots 1 & 3 DP 508120

Surveyor: Alexander David John Liggett
Firm: Fox and Associates
Date of Survey: 3/02/2022

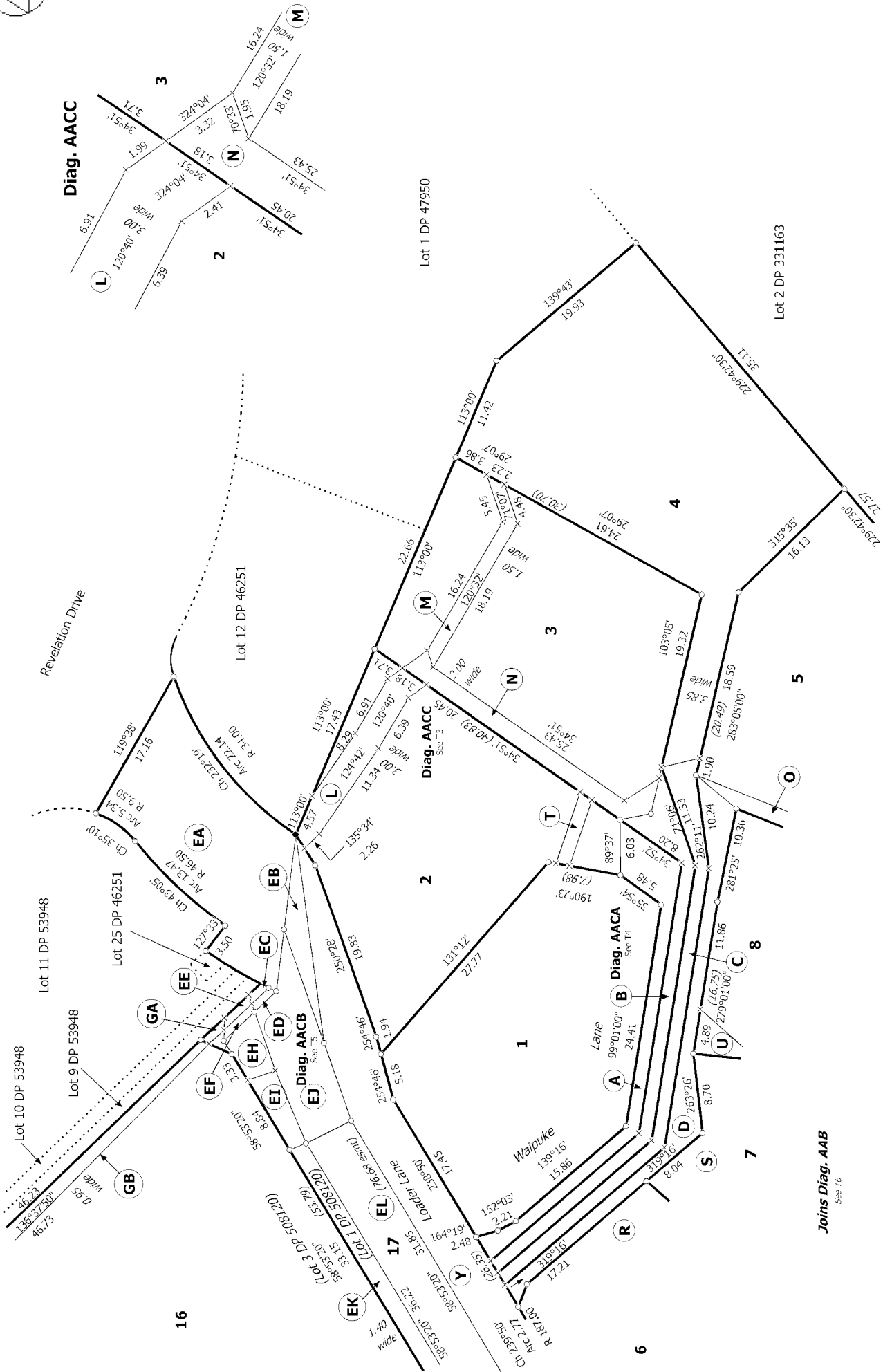
Record of Survey
DP 567781

Deposited on: 4/07/2022

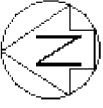


Diag. AAC

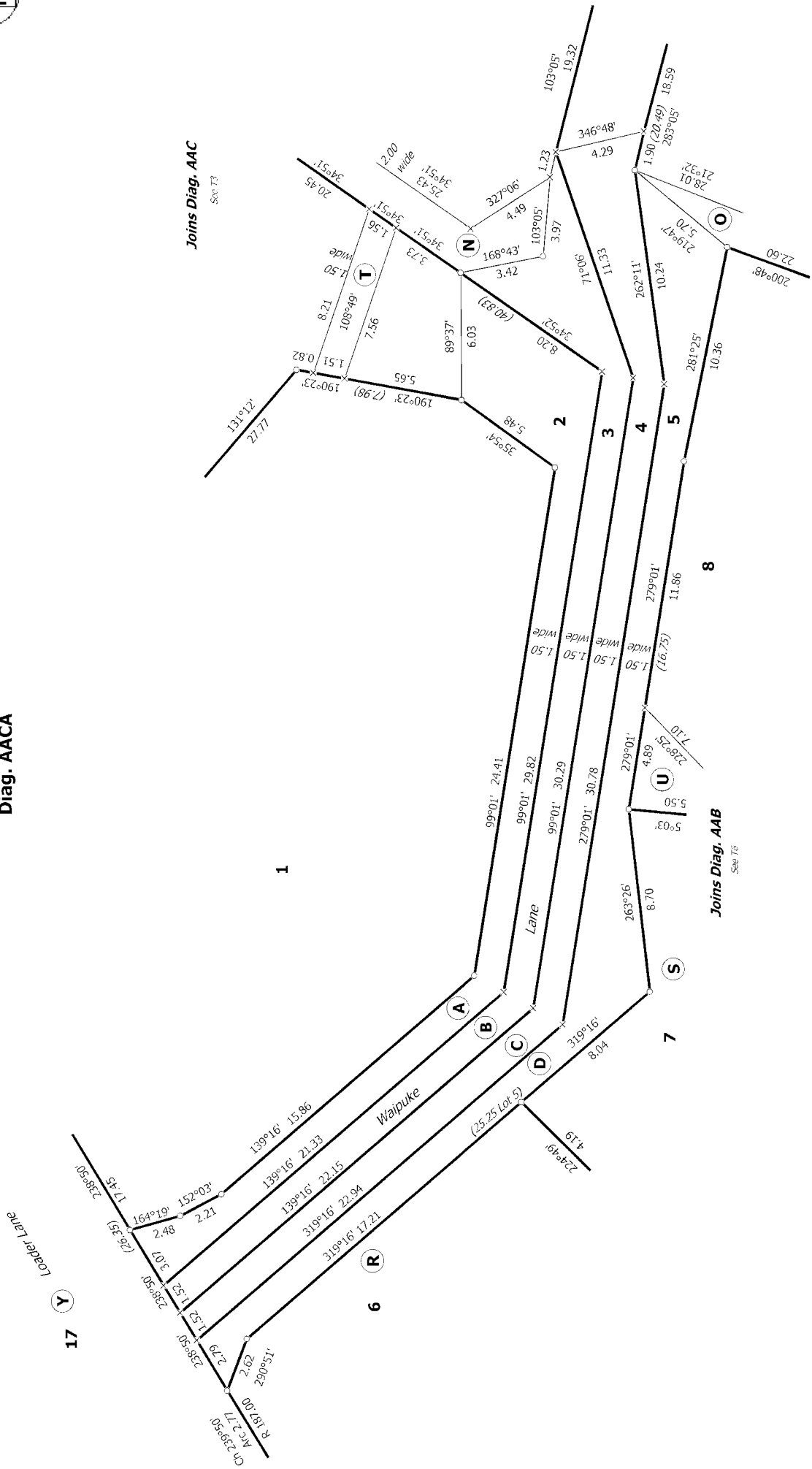
Diag. AACC



Joins Diag. AAB
See T6



Diag. AAC



T 4/9

Land District: Canterbury

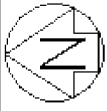
Digitally Generated Plan

Generated on: 04/08/2022 12:34pm Page 44 of 49

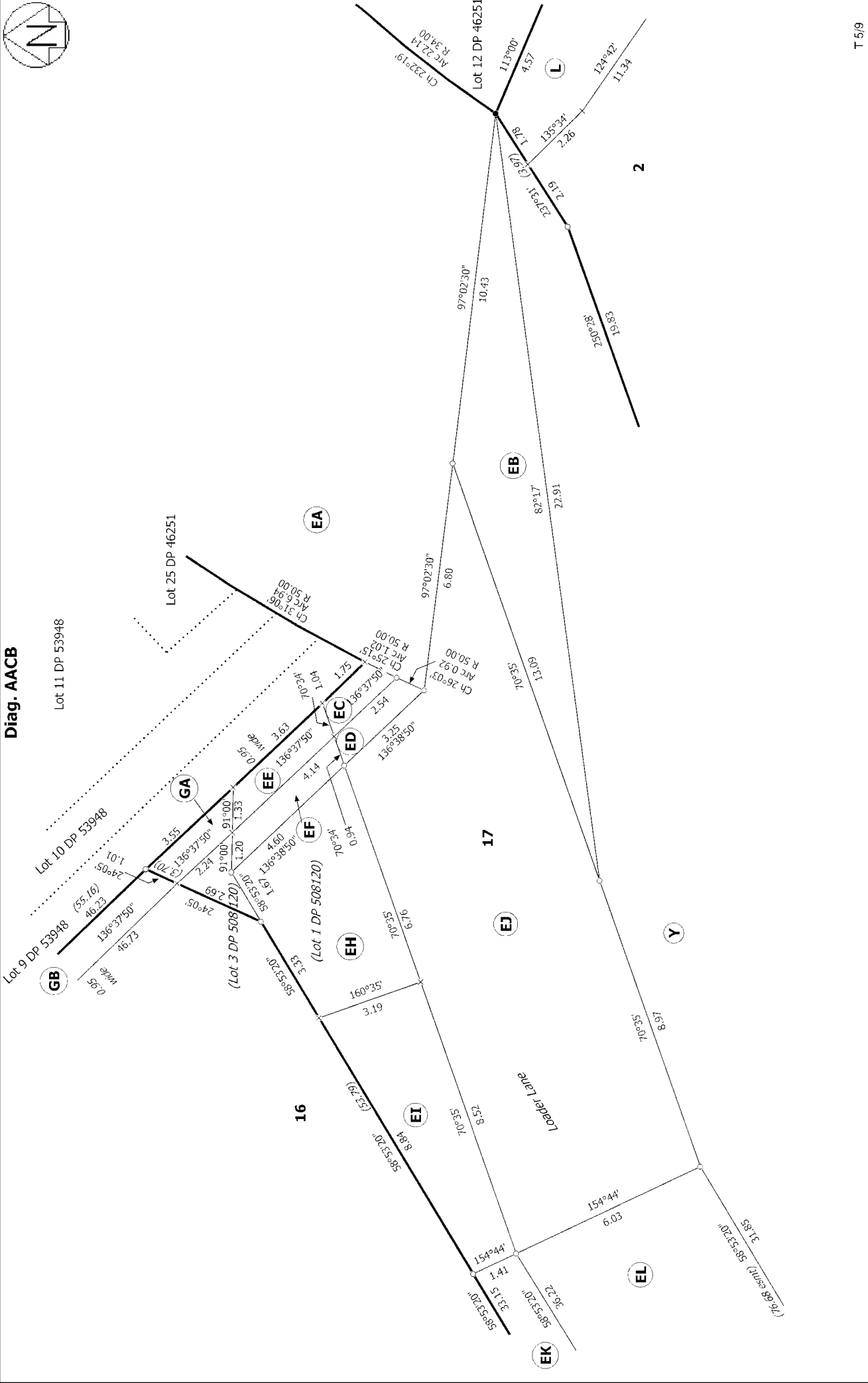
Lots 1 to 17 being a Subdivision of Lots 1 & 3 DP 508120

Surveyor: Alexander David John Liggitt
Firm: Fox and Associates
Date of Survey: 3/02/2022

Record of Survey
DP 567781
Deposited on: 4/07/2022



Diag. AACB



T 5/9

Land District: Canterbury

Digitally Generated Plan

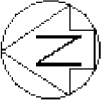
Generated on: 04/08/2022 12:34pm Page 45 of 49

Lots 1 to 17 being a Subdivision of Lots 1 & 3 DP 508120

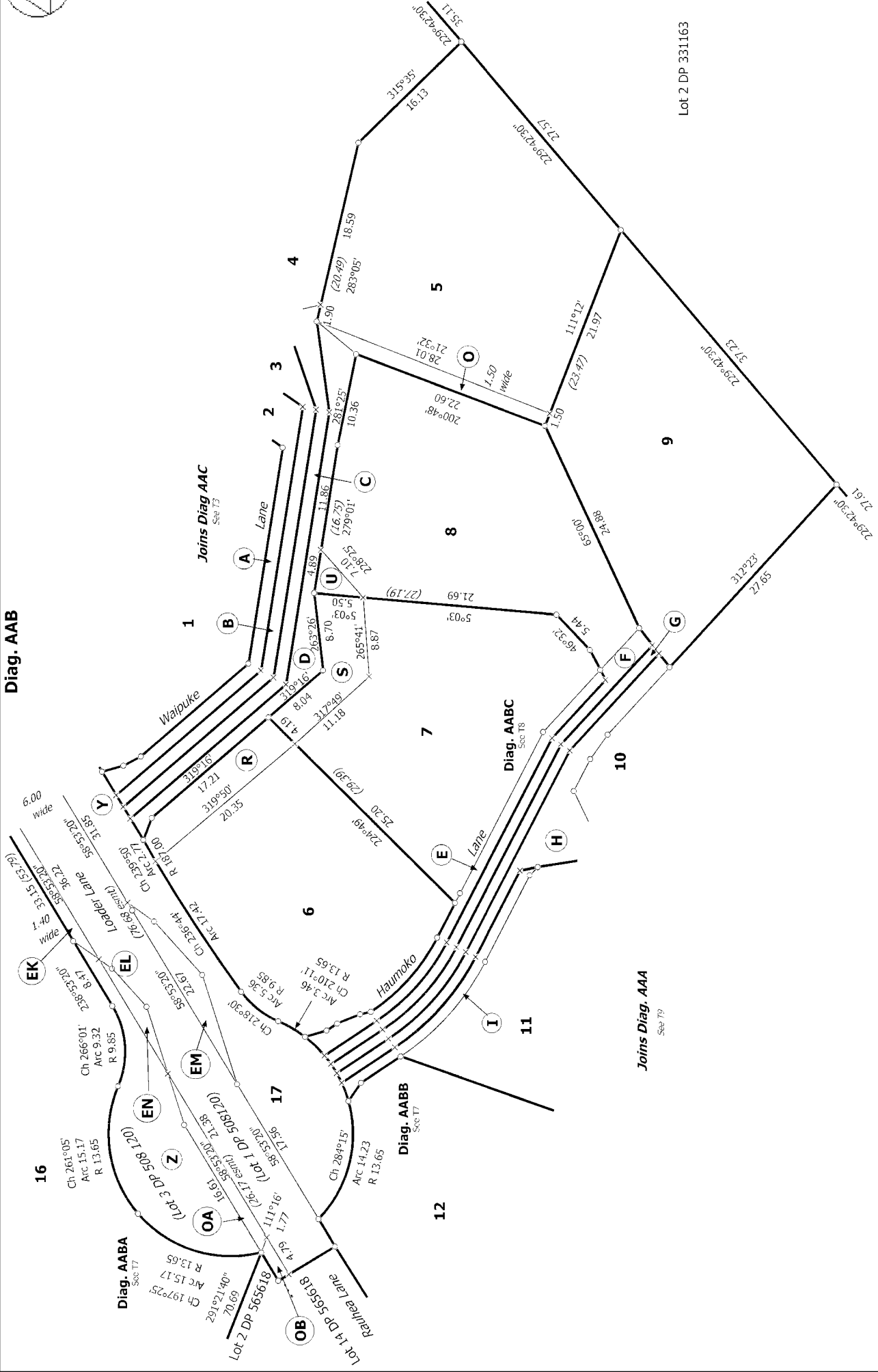
Surveyor: Alexander David John Liggitt
Firm: Fox and Associates
Date of Survey: 3/02/2022

Record of Survey
DP 567781

Deposited on: 4/07/2022



Diag. AAB



Lot 2 DP 331163

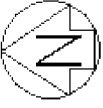
T 6/9

Land District: Canterbury

Lots 1 to 17 being a Subdivision of Lots 1 & 3 DP 508120

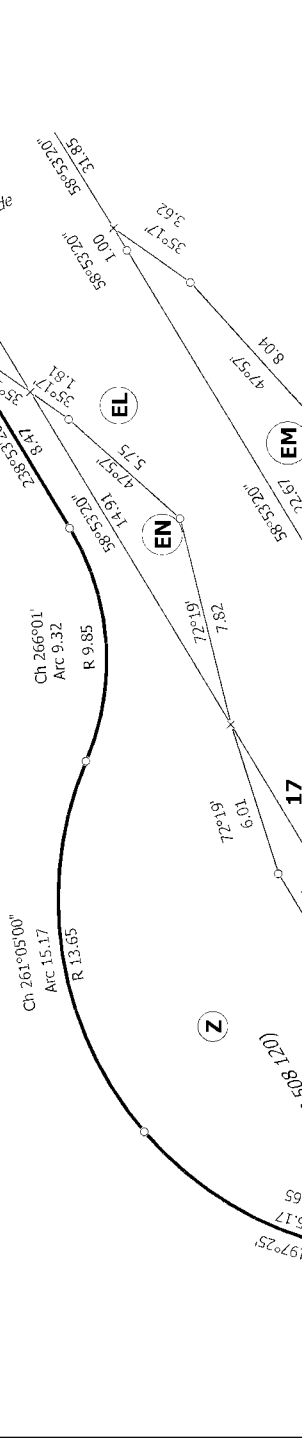
Surveyor: Alexander David John Liggitt
Firm: Fox and Associates
Date of Survey: 3/02/2022

Record of Survey
DP 567781
Deposited on: 4/07/2022

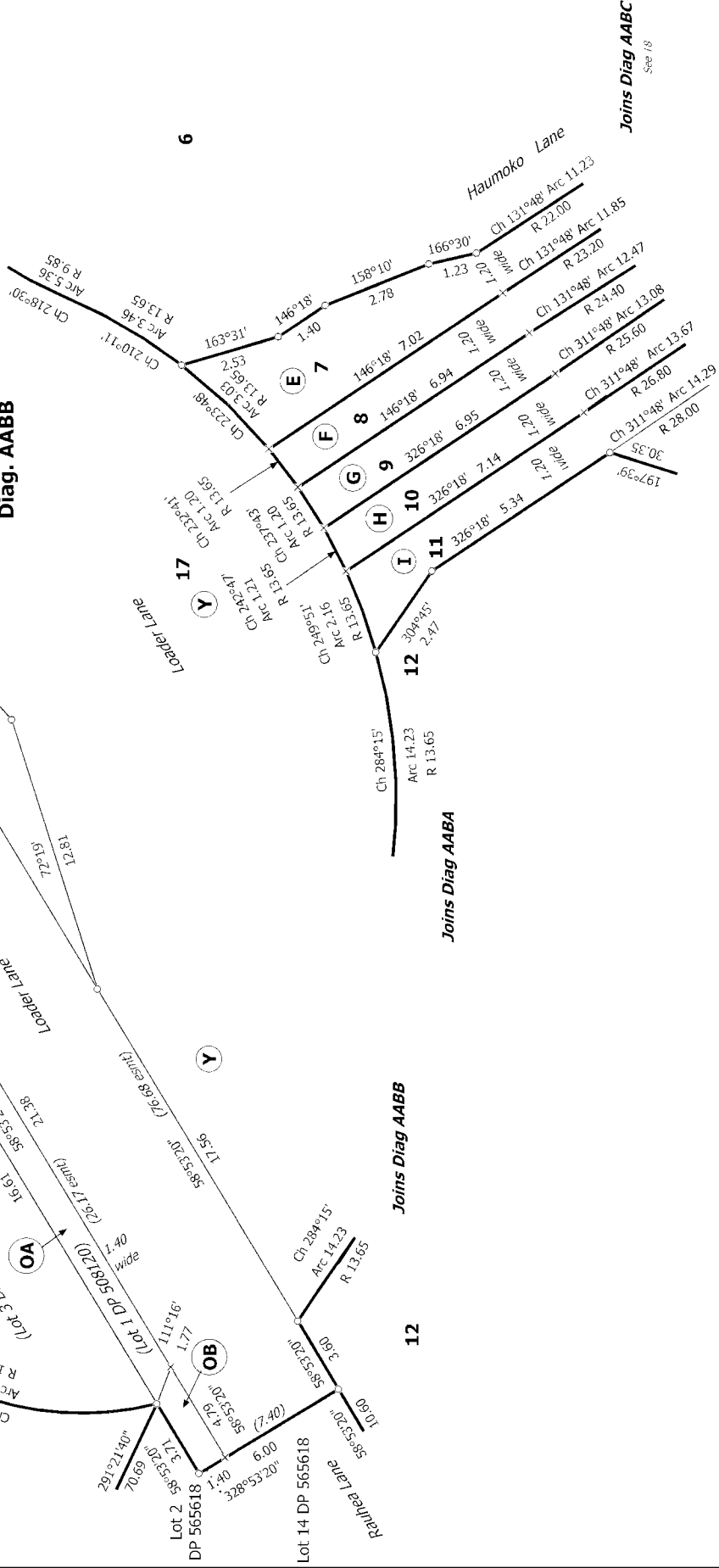


Diag. AABA 16

Joins Diag AACB
See 14



Diag. AABB



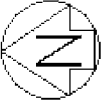
T 719

Land District: Canterbury

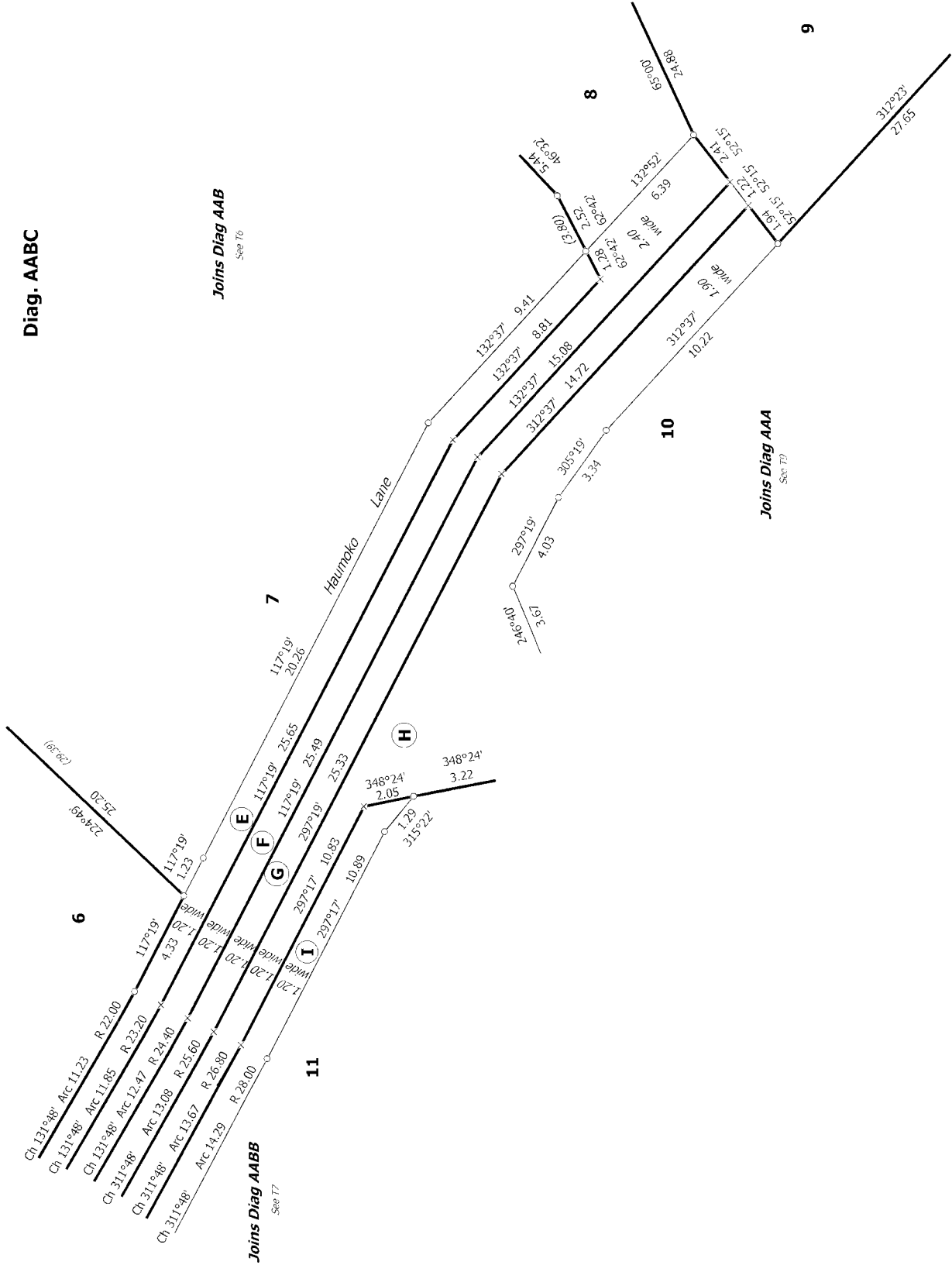
Lots 1 to 17 being a Subdivision of Lots 1 & 3 DP 508120

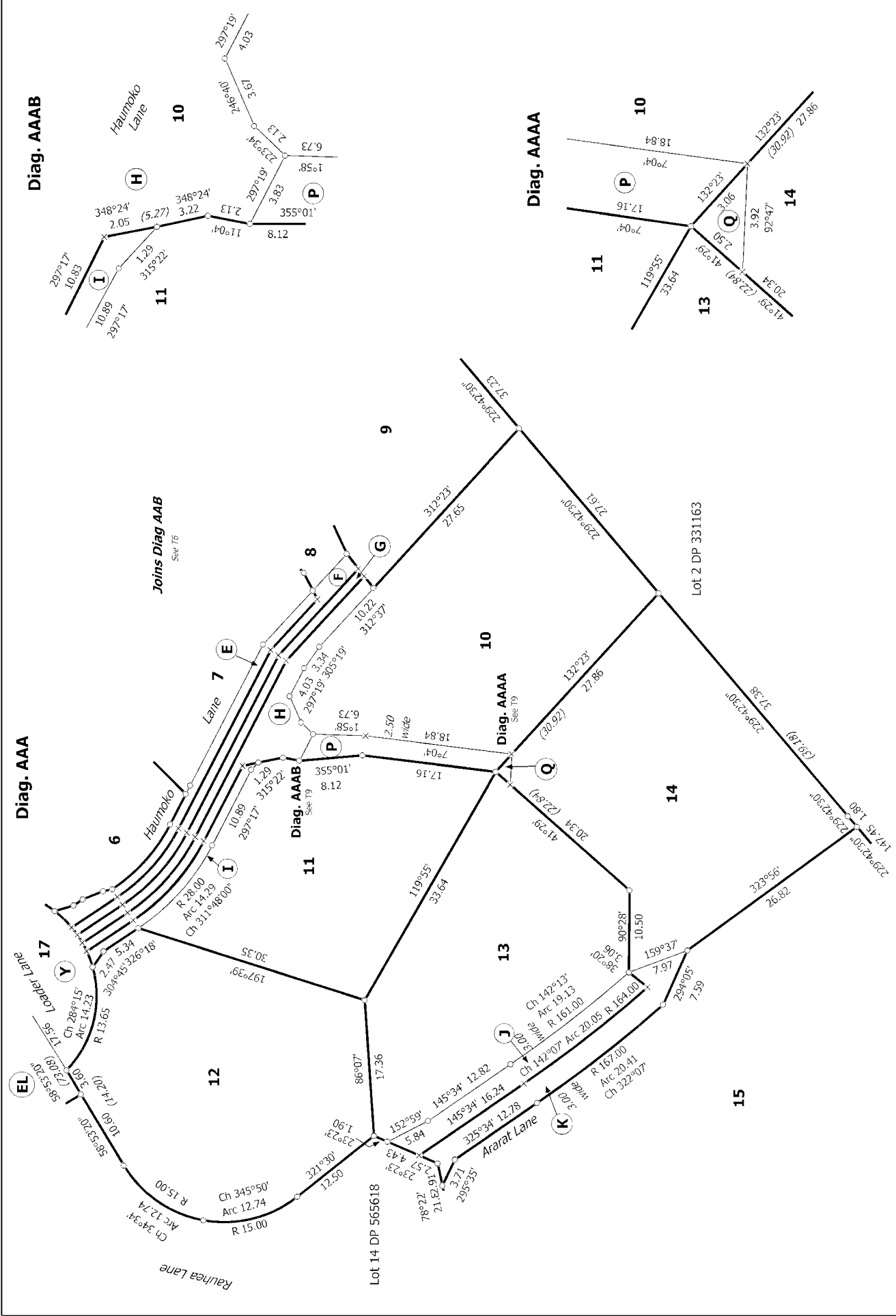
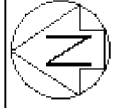
Surveyor: Alexander David John Liggitt
Firm: Fox and Associates
Date of Survey: 3/02/2022

Record of Survey
DP 567781
Deposited on: 4/07/2022



Diag. AABC





Diag. AAAB

Joins Diag AAB

Diag. AAA

Diag. AAAA

T 9/9