



CSD Plan - DP 564472

Survey Number DP 564472
Surveyor Reference 4785K Mountford Walkway Easement
Surveyor Alexander David John Liggett
Survey Firm Fox and Associates
Surveyor Declaration I Alexander David John Liggett, being a licensed cadastral surveyor, certify that:
(a) this dataset provided by me and its related survey are accurate, correct and in accordance with the Cadastral Survey Act 2002 and the Rules for Cadastral Survey 2010, and
(b) the survey was undertaken by me or under my personal direction.
Declared on 14 Sep 2021 02:29 PM

Survey Details

Dataset Description Walkway over Lot 2 DP 324915
Purpose Easement
Status Deposited
Land District Canterbury
Meridional Circuit Mount Pleasant 2000

Type	Parcels without Survey Information
Survey Class	Class B
Vertical Datum	None

Survey Dates

Surveyed Date	15/06/2021	Certified Date	14/09/2021
Submitted Date	14/09/2021 14:29:25	Survey Approval Date	12/10/2021
Deposit Date	23/03/2022		

Referenced Surveys

Survey Number	Land District	Bearing Correction
DP 76948	Canterbury	0°00'00"
DP 324915	Canterbury	0°00'00"
DP 73074	Canterbury	0°00'00"
DP 62830	Canterbury	0°00'00"

Territorial Authorities

Hurunui District

Comprised In

RT 100378

Created Parcels

Parcels	Parcel Intent	Area	RT Reference
Area A Deposited Plan 564472	Easement		
Total Area		0.0000 Ha	

Mark and Vector

Survey Number DP 564472

Meridional Circuit Mount Pleasant 2000

From	To	Code	Bearing	Adpt Surv	Bearing Correction	Distance	Adpt Surv	Class
POST LXV DP 324915	UNMK 1 DP 564472	ob0	200°53'00"	A DP 324915	0°00'00"	1.69 C		
UNMK 1 DP 564472	UNMK 104 DP 564472	ob2	200°53'00"	A DP 324915	0°00'00"	3.02 C		Class B
UNMK 104 DP 564472	POST LXVI DP 324915	ob4	200°53'00"	A DP 324915	0°00'00"	2.51 C		
POST LXXVII DP 324915	UNMK 53 DP 564472	ob1	345°32'40"	A DP 324915	0°00'00"	207.81 C		
UNMK 53 DP 564472	UNMK 52 DP 564472	ob6	345°32'40"	A DP 324915	0°00'00"	4.02 C		Class B
UNMK 52 DP 564472	POST LXXVIII DP 324915	ob5	345°32'40"	A DP 324915	0°00'00"	0.59 C		
UNMK 1 DP 564472	UNMK 2 DP 564472	ob3	105°23'00"	C		22.15 C		Class B
UNMK 2 DP 564472	UNMK 3 DP 564472	ob8	100°16'00"	C		12.93 C		Class B
UNMK 3 DP 564472	UNMK 4 DP 564472	ob9	87°03'00"	C		7.75 C		Class B
UNMK 4 DP 564472	UNMK 5 DP 564472	ob10	70°25'00"	C		6.90 C		Class B
UNMK 5 DP 564472	UNMK 6 DP 564472	ob11	48°11'00"	C		10.48 C		Class B
UNMK 6 DP 564472	UNMK 7 DP 564472	ob12	23°49'00"	C		12.60 C		Class B
UNMK 7 DP 564472	UNMK 8 DP 564472	ob13	15°07'00"	C		17.79 C		Class B
UNMK 8 DP 564472	UNMK 9 DP 564472	ob14	19°46'00"	C		5.72 C		Class B
UNMK 9 DP 564472	UNMK 10 DP 564472	ob15	27°45'00"	C		6.25 C		Class B
UNMK 10 DP 564472	UNMK 11 DP 564472	ob16	39°43'00"	C		7.86 C		Class B
UNMK 11 DP 564472	UNMK 12 DP 564472	ob17	51°30'00"	C		7.16 C		Class B
UNMK 12 DP 564472	UNMK 13 DP 564472	ob18	61°40'00"	C		8.25 C		Class B
UNMK 13 DP 564472	UNMK 14 DP 564472	ob19	63°40'00"	C		10.20 C		Class B
UNMK 14 DP 564472	UNMK 15 DP 564472	ob20	58°36'00"	C		12.28 C		Class B
UNMK 15 DP 564472	UNMK 16 DP 564472	ob21	53°14'00"	C		9.07 C		Class B
UNMK 16 DP 564472	UNMK 17 DP 564472	ob22	47°15'00"	C		8.71 C		Class B
UNMK 17 DP 564472	UNMK 18 DP 564472	ob23	40°13'00"	C		11.46 C		Class B

Mark and Vector

Survey Number DP 564472

Meridional Circuit Mount Pleasant 2000

From	To	Code	Bearing	Adpt Surv	Bearing Correction	Distance	Adpt Surv	Class
UNMK 18 DP 564472	UNMK 19 DP 564472	ob24	33°06'00"	C		12.02 C		Class B
UNMK 19 DP 564472	UNMK 20 DP 564472	ob25	27°05'00"	C		9.08 C		Class B
UNMK 20 DP 564472	UNMK 21 DP 564472	ob26	22°31'00"	C		8.91 C		Class B
UNMK 21 DP 564472	UNMK 22 DP 564472	ob27	48°45'00"	C		3.42 C		Class B
UNMK 22 DP 564472	UNMK 23 DP 564472	ob28	32°48'00"	C		16.32 C		Class B
UNMK 23 DP 564472	UNMK 24 DP 564472	ob29	35°06'00"	C		6.50 C		Class B
UNMK 24 DP 564472	UNMK 25 DP 564472	ob30	36°21'00"	C		8.21 C		Class B
UNMK 25 DP 564472	UNMK 26 DP 564472	ob31	43°33'00"	C		6.91 C		Class B
UNMK 26 DP 564472	UNMK 27 DP 564472	ob32	48°21'00"	C		7.19 C		Class B
UNMK 27 DP 564472	UNMK 28 DP 564472	ob33	51°32'00"	C		7.54 C		Class B
UNMK 28 DP 564472	UNMK 29 DP 564472	ob34	43°35'00"	C		8.24 C		Class B
UNMK 29 DP 564472	UNMK 30 DP 564472	ob35	41°17'00"	C		7.34 C		Class B
UNMK 30 DP 564472	UNMK 31 DP 564472	ob36	32°16'00"	C		6.78 C		Class B
UNMK 31 DP 564472	UNMK 32 DP 564472	ob37	17°26'00"	C		4.92 C		Class B
UNMK 32 DP 564472	UNMK 33 DP 564472	ob38	350°10'00"	C		5.54 C		Class B
UNMK 33 DP 564472	UNMK 34 DP 564472	ob39	342°20'00"	C		6.07 C		Class B
UNMK 34 DP 564472	UNMK 35 DP 564472	ob40	354°10'00"	C		6.16 C		Class B
UNMK 35 DP 564472	UNMK 36 DP 564472	ob41	31°08'00"	C		7.83 C		Class B
UNMK 36 DP 564472	UNMK 37 DP 564472	ob42	36°28'00"	C		32.68 C		Class B
UNMK 37 DP 564472	UNMK 38 DP 564472	ob43	19°31'00"	C		2.91 C		Class B
UNMK 38 DP 564472	UNMK 39 DP 564472	ob44	0°44'00"	C		2.86 C		Class B
UNMK 39 DP 564472	UNMK 40 DP 564472	ob45	346°13'00"	C		16.96 C		Class B
UNMK 40 DP 564472	UNMK 41 DP 564472	ob46	340°54'00"	C		7.68 C		Class B
UNMK 41 DP 564472	UNMK 42 DP 564472	ob47	331°15'00"	C		18.57 C		Class B

Mark and Vector

Survey Number DP 564472

Meridional Circuit Mount Pleasant 2000

From	To	Code	Bearing	Adpt Surv	Bearing Correction	Distance	Adpt Surv	Class
UNMK 42 DP 564472	UNMK 43 DP 564472	ob48	352°09'00"	C		3.89 C		Class B
UNMK 43 DP 564472	UNMK 44 DP 564472	ob49	18°52'00"	C		3.82 C		Class B
UNMK 44 DP 564472	UNMK 45 DP 564472	ob50	29°31'00"	C		6.20 C		Class B
UNMK 45 DP 564472	UNMK 46 DP 564472	ob51	37°56'00"	C		29.24 C		Class B
UNMK 46 DP 564472	UNMK 47 DP 564472	ob52	61°51'00"	C		3.01 C		Class B
UNMK 47 DP 564472	UNMK 48 DP 564472	ob53	79°03'00"	C		2.59 C		Class B
UNMK 48 DP 564472	UNMK 49 DP 564472	ob54	101°36'00"	C		2.74 C		Class B
UNMK 49 DP 564472	UNMK 50 DP 564472	ob55	124°48'00"	C		7.11 C		Class B
UNMK 50 DP 564472	UNMK 51 DP 564472	ob56	120°55'00"	C		6.19 C		Class B
UNMK 51 DP 564472	UNMK 52 DP 564472	ob57	117°20'00"	C		9.13 C		Class B
UNMK 53 DP 564472	UNMK 54 DP 564472	ob7	297°20'00"	C		11.90 C		Class B
UNMK 54 DP 564472	UNMK 55 DP 564472	ob58	300°55'00"	C		6.38 C		Class B
UNMK 55 DP 564472	UNMK 56 DP 564472	ob59	304°48'00"	C		6.60 C		Class B
UNMK 56 DP 564472	UNMK 57 DP 564472	ob60	281°36'00"	C		1.53 C		Class B
UNMK 57 DP 564472	UNMK 58 DP 564472	ob61	259°03'00"	C		1.54 C		Class B
UNMK 58 DP 564472	UNMK 59 DP 564472	ob62	241°51'00"	C		1.93 C		Class B
UNMK 59 DP 564472	UNMK 60 DP 564472	ob63	217°56'00"	C		28.38 C		Class B
UNMK 60 DP 564472	UNMK 61 DP 564472	ob64	209°31'00"	C		5.70 C		Class B
UNMK 61 DP 564472	UNMK 62 DP 564472	ob65	198°52'00"	C		2.83 C		Class B
UNMK 62 DP 564472	UNMK 63 DP 564472	ob66	172°09'00"	C		2.62 C		Class B
UNMK 63 DP 564472	UNMK 64 DP 564472	ob67	151°15'00"	C		18.27 C		Class B
UNMK 64 DP 564472	UNMK 65 DP 564472	ob68	160°54'00"	C		8.07 C		Class B
UNMK 65 DP 564472	UNMK 66 DP 564472	ob69	166°13'00"	C		17.48 C		Class B
UNMK 66 DP 564472	UNMK 67 DP 564472	ob70	180°44'00"	C		3.74 C		Class B

Mark and Vector

Survey Number DP 564472

Meridional Circuit Mount Pleasant 2000

From	To	Code	Bearing	Adpt Surv	Bearing Correction	Distance	Adpt Surv	Class
UNMK 67 DP 564472	UNMK 68 DP 564472	ob71	199°31'00"	C		3.85 C		Class B
UNMK 68 DP 564472	UNMK 69 DP 564472	ob72	216°28'00"	C		32.98 C		Class B
UNMK 69 DP 564472	UNMK 70 DP 564472	ob73	211°08'00"	C		6.69 C		Class B
UNMK 70 DP 564472	UNMK 71 DP 564472	ob74	174°10'00"	C		4.85 C		Class B
UNMK 71 DP 564472	UNMK 72 DP 564472	ob75	162°20'00"	C		5.96 C		Class B
UNMK 72 DP 564472	UNMK 73 DP 564472	ob76	170°10'00"	C		6.48 C		Class B
UNMK 73 DP 564472	UNMK 74 DP 564472	ob77	197°26'00"	C		6.04 C		Class B
UNMK 74 DP 564472	UNMK 75 DP 564472	ob78	212°16'00"	C		7.41 C		Class B
UNMK 75 DP 564472	UNMK 76 DP 564472	ob79	221°17'00"	C		7.64 C		Class B
UNMK 76 DP 564472	UNMK 77 DP 564472	ob80	223°35'00"	C		8.51 C		Class B
UNMK 77 DP 564472	UNMK 78 DP 564472	ob81	231°32'00"	C		7.67 C		Class B
UNMK 78 DP 564472	UNMK 79 DP 564472	ob82	228°21'00"	C		6.98 C		Class B
UNMK 79 DP 564472	UNMK 80 DP 564472	ob83	223°33'00"	C		6.60 C		Class B
UNMK 80 DP 564472	UNMK 81 DP 564472	ob84	216°21'00"	C		7.98 C		Class B
UNMK 81 DP 564472	UNMK 82 DP 564472	ob85	215°06'00"	C		6.40 C		Class B
UNMK 82 DP 564472	UNMK 83 DP 564472	ob86	212°48'00"	C		16.68 C		Class B
UNMK 83 DP 564472	UNMK 84 DP 564472	ob87	228°45'00"	C		3.14 C		Class B
UNMK 84 DP 564472	UNMK 85 DP 564472	ob88	202°31'00"	C		8.33 C		Class B
UNMK 85 DP 564472	UNMK 86 DP 564472	ob89	207°05'00"	C		9.35 C		Class B
UNMK 86 DP 564472	UNMK 87 DP 564472	ob90	213°06'00"	C		12.37 C		Class B
UNMK 87 DP 564472	UNMK 88 DP 564472	ob91	220°13'00"	C		11.83 C		Class B
UNMK 88 DP 564472	UNMK 89 DP 564472	ob92	227°15'00"	C		9.05 C		Class B
UNMK 89 DP 564472	UNMK 90 DP 564472	ob93	233°14'00"	C		9.37 C		Class B
UNMK 90 DP 564472	UNMK 91 DP 564472	ob94	238°36'00"	C		12.55 C		Class B

Mark and Vector

Survey Number DP 564472

Meridional Circuit Mount Pleasant 2000

From	To	Code	Bearing	Adpt Surv	Bearing Correction	Distance	Adpt Surv	Class
UNMK 91 DP 564472	UNMK 92 DP 564472	ob95	243°40'00"	C		10.28 C		Class B
UNMK 92 DP 564472	UNMK 93 DP 564472	ob96	241°40'00"	C		7.93 C		Class B
UNMK 93 DP 564472	UNMK 94 DP 564472	ob97	231°30'00"	C		6.58 C		Class B
UNMK 94 DP 564472	UNMK 95 DP 564472	ob98	219°43'00"	C		7.23 C		Class B
UNMK 95 DP 564472	UNMK 96 DP 564472	ob99	207°45'00"	C		5.73 C		Class B
UNMK 96 DP 564472	UNMK 97 DP 564472	ob100	199°46'00"	C		5.39 C		Class B
UNMK 97 DP 564472	UNMK 98 DP 564472	ob101	195°07'00"	C		17.90 C		Class B
UNMK 98 DP 564472	UNMK 99 DP 564472	ob102	203°49'00"	C		13.48 C		Class B
UNMK 99 DP 564472	UNMK 100 DP 564472	ob103	228°11'00"	C		11.72 C		Class B
UNMK 100 DP 564472	UNMK 101 DP 564472	ob104	250°25'00"	C		7.92 C		Class B
UNMK 101 DP 564472	UNMK 102 DP 564472	ob105	267°03'00"	C		8.54 C		Class B
UNMK 102 DP 564472	UNMK 103 DP 564472	ob106	280°16'00"	C		13.41 C		Class B
UNMK 103 DP 564472	UNMK 104 DP 564472	ob107	285°23'00"	C		22.57 C		Class B

*** End of Report ***

Schedule / Memorandum

Land Registration District

Canterbury

Survey Number

LT 564472

Territorial Authority (the Council)

Hurunui District

Schedule of Easements in Gross

Last Edited: 24 Jun 2021 09:42:49

<u>Purpose</u>	<u>Shown</u>	<u>Servient Tenement (Burdened Land)</u>	<u>Grantee</u>
Walkway under the Walking Access Act 2008	A	Lot 2 DP 324915	New Zealand Walking Access Commission



Diag. A
Non Primary

Lot 1 DP 73074

Lot 2 DP 324915
RT 100378

Lot 1 DP 324915

Lot 1 DP 76948

Lot 3 DP 324915

Diag. AC
See T2

A

Diag. AB
See T2

Diag. AA
See T2

T 1/2

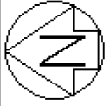
Land District: Canterbury
Dataset Type: Parcels without Survey Information
Digitally Generated Plan
Generated on: 03/04/2022 07:43am Page 3 of 9

Walkway over Lot 2 DP 324915

Surveyor: Alexander David John Liggett
Firm: Fox and Associates
Survey Date: 15/06/2021

CSD Plan
DP 564472

Deposited on: 23/03/2022



Diag. AA
Non Primary

Diag. AC
Non Primary

Diag. AB
Non Primary

Joins Diag. AB

Joins Diag. AC

Joins Diag. AB

Joins Diag. AA

Lot 2 DP 324915

Lot 2 DP 324915

Lot 2 DP 324915

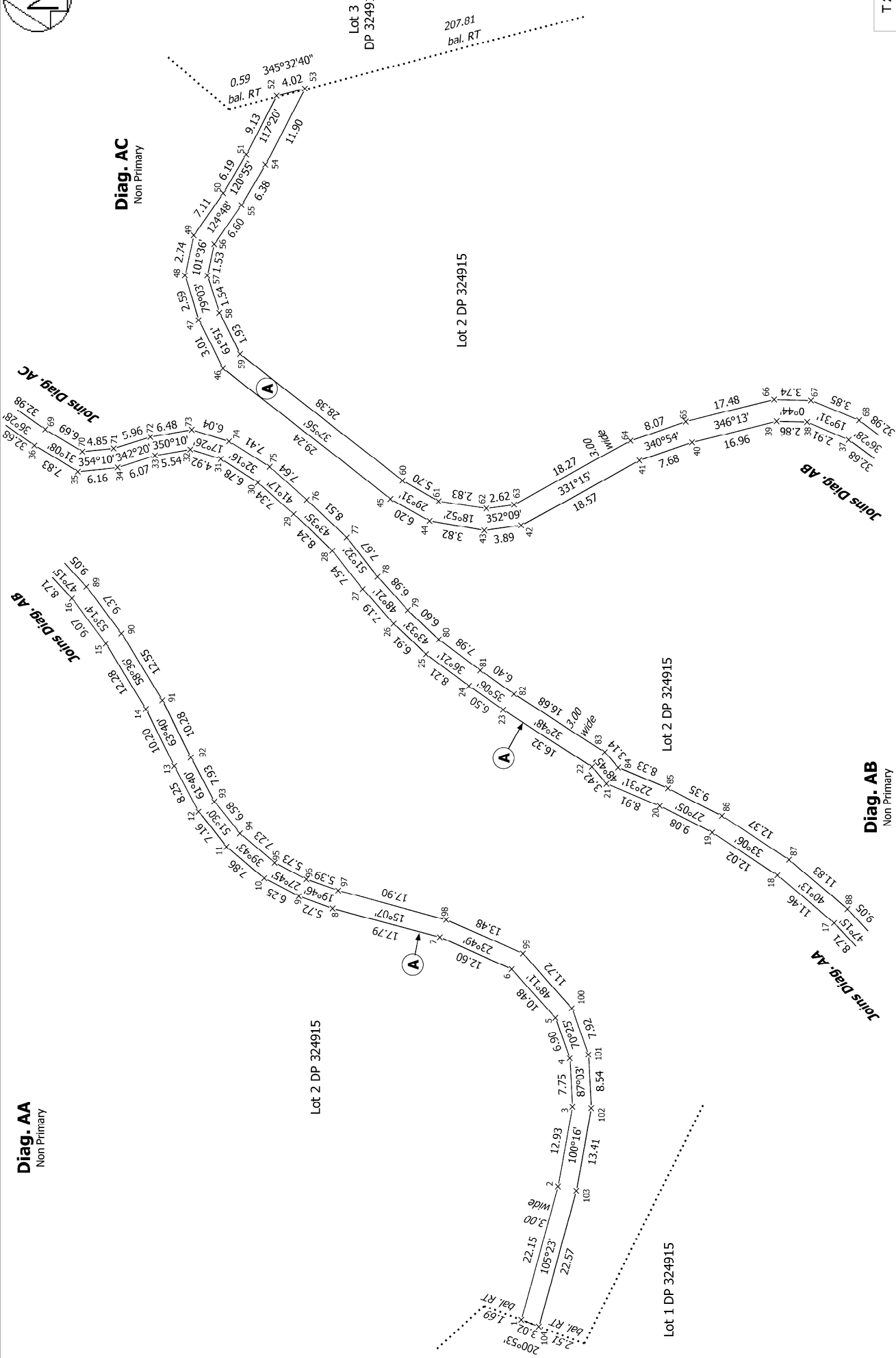
Lot 1 DP 324915

Lot 3
DP 324915

207.81
bal. RT

0.59
bal. RT

2.51
bal. RT



T 2/2

Land District: Canterbury
Dataset Type: Parcels without Survey Information
Digitally Generated Plan
Generated on: 03/04/2022 07:43am Page 3 of 9

Walkway over Lot 2 DP 324915

Surveyor: Alexander David John Liggitt
Firm: Fox and Associates
Survey Date: 15/06/2021

CSD Plan
DP 564472

Deposited on: 23/03/2022