



# CSD Plan - DP 534147

---

**Survey Number** DP 534147  
**Surveyor Reference** 4198D - Rue Balguerie  
**Surveyor** Alexander David John Liggett  
**Survey Firm** Fox and Associates  
**Surveyor Declaration** I Alexander David John Liggett, being a licensed cadastral surveyor, certify that:  
(a) this dataset provided by me and its related survey are accurate, correct and in accordance with the Cadastral Survey Act 2002 and the Rules for Cadastral Survey 2010, and  
(b) the survey was undertaken by me or under my personal direction.  
Declared on 07 May 2019 03:55 PM

---

## Survey Details

**Dataset Description** Lots 1-4 being a Subdivision of Lot 1 DP 26281  
**Purpose** LT Subdivision  
**Status** Deposited **Type** Survey  
**Land District** Canterbury **Survey Class** Class A  
**Meridional Circuit** Mount Pleasant 2000 **Vertical Datum**

---

## Survey Dates

**Surveyed Date** 07/03/2019 **Certified Date** 07/05/2019  
**Submitted Date** 07/05/2019 15:55:27 **Survey Approval Date** 08/05/2019  
**Deposit Date** 05/06/2020

---

## Referenced Surveys

Survey Number	Land District	Bearing Correction
DP 1378	Canterbury	0°00'00"
DP 26281	Canterbury	0°00'00"
SO 15726	Canterbury	0°00'00"
SO 19371	Canterbury	0°00'00"
DP 23947	Canterbury	0°00'00"
DP 45312	Canterbury	0°00'00"
DP 322603	Canterbury	0°00'00"
DP 495035	Canterbury	0°00'00"

---

## Territorial Authorities

Christchurch City

---

## Comprised In

RT 90212  
RT CB8B/517

---

## Created Parcels

Parcels	Parcel Intent	Area	RT Reference
Lot 1 Deposited Plan 534147	Fee Simple Title	0.0565 Ha	882671
Lot 2 Deposited Plan 534147	Fee Simple Title	0.1370 Ha	882672

---



# CSD Plan - DP 534147

---

## Created Parcels

Parcels	Parcel Intent	Area	RT Reference
Lot 3 Deposited Plan 534147	Vesting on Deposit for Local Purpose Reserve	0.0393 Ha	882920
Lot 4 Deposited Plan 534147	Vesting on Deposit in the Territorial Authority (Sec 237A(1)(a) RM Act)	0.0094 Ha	
<b>Total Area</b>		<hr/> 0.2422 Ha	

# Mark and Vector

Survey Number DP 534147

Meridional Circuit Mount Pleasant 2000

From	To	Code	Bearing	Adpt Surv	Distance	Adpt Surv	Class
SS 71 SO 19371	IR I DP 322603	ob0	299°06'15"	M	45.82	M	
IR I DP 322603	IR VI DP 322603	ob2	299°06'15"	M	19.83	M	
IR VI DP 322603	IS 1 DP 495035	ob4	299°06'15"	M	119.41	M	
IS 1 DP 495035	SS 70 SO 19371	ob6	299°06'15"	A DP 495035	84.77	A DP 495035	
SS 70 SO 19371	IS I DP 12926	ob8	118°08'20"	A SO 19371	3.915	A SO 19371	
IS I DP 12926	IS IV DP 26281	ob9	119°07'30"	A DP 26281	243.92	A DP 26281	
IS IV DP 26281	IT I SO 15726	ob12	119°07'30"	A DP 26281	20.41	C	
IT I SO 15726	SS 71 SO 19371	ob20	119°07'30"	A DP 26281	1.58	A SO 15726	
IR VI DP 322603	IR V DP 322603	ob5	27°19'30"	A DP 322603	96.49	A DP 322603	
IR V DP 322603	IR VII DP 322603	ob54	14°57'50"	A DP 322603	72.81	A DP 322603	
IR VII DP 322603	PEG VIII DP 26281	ob55	133°48'00"	A DP 322603	92.82	A DP 322603	
PEG VIII DP 26281	IS VIa DP 26281	ob46	214°08'30"	A DP 26281	45.38	A DP 26281	
IS VIa DP 26281	IS VI DP 26281	ob50	197°55'00"	A DP 26281	19.96	A DP 26281	
IS VI DP 26281	IT V DP 26281	ob51	197°55'00"	A DP 26281	31.66	A DP 26281	
IS 1 DP 495035	IT 1 DP 534147	ob7	117°59'35"	M	197.72	M	
IT 1 DP 534147	MN 71A SO 19371	ob27	247°22'00"	M	11.50	M	
MN 71A SO 19371	SS 71 SO 19371	ob30	342°29'00"	M	7.56	M	
IR I DP 322603	IR II DP 322603	ob3	38°03'40"	M	38.93	M	
IR II DP 322603	IS 2 DP 534147	ob41	117°42'00"	M	35.25	M	
IS 2 DP 534147	IT 1 DP 534147	ob32	183°18'00"	M	39.40	M	
IR II DP 322603	IS 3 DP 534147	ob42	114°17'00"	M	34.04	M	
IS 3 DP 534147	IS 2 DP 534147	ob35	175°20'00"	M	2.40	M	
IS 3 DP 534147	IT 1 DP 534147	ob36	182°52'00"	M	41.78	M	
IR II DP 322603	PEG B10 DP 322603	ob43	120°50'20"	A DP 322603	26.96	A DP 322603	
IT I SO 15726	IT XI SO 15726	ob21	42°05'30"	A SO 15726	33.71	A SO 15726	
IT XI SO 15726	IT V DP 26281	ob22	42°05'30"	A SO 15726	15.19	A SO 15726	
IT XI SO 15726	PEG XII SO 15726	ob23	18°04'00"	A SO 15726	4.11	A SO 15726	
IT V DP 26281	PEG DP 26281	ob53	298°09'00"	A SO 15726	4.40	A SO 15726	
IS VI DP 26281	PEG DP 26281	ob52	118°09'00"	A DP 45312	1.19	A DP 45312	
PEG VIII DP 26281	PEG DP 26281	ob47	298°09'00"	A DP 26281	18.31	A DP 26281	Class A
PEG DP 26281	PEG DP 1378	ob11	208°09'00"	A DP 1378	72.66	A DP 1378	Class A
PEG DP 1378	PEG B9 DP 322603	ob15	207°18'30"	A DP 322603	19.24	A DP 322603	Class A
PEG B9 DP 322603	UNMK DP 322603	ob49	207°18'30"	A DP 322603	0.80	A DP 322603	Class A
UNMK DP 322603	UNMK DP 322603	ob44	207°18'30"	A DP 322603	7.22	A DP 322603	Class A
UNMK DP 322603	PEG DP 322603	ob45	207°18'30"	A DP 322603	1.70	A DP 322603	Class A
PEG DP 322603	PEG B10 DP 322603	ob48	208°51'00"	A DP 322603	3.90	A DP 322603	Class A
PEG XII SO 15726	UNMK SO 15726	ob24	28°02'00"	A DP 45312	1.00	A SO 15726	Class A
UNMK SO 15726	UNMK SO 15726	ob26	28°02'00"	A DP 45312	7.00	A SO 15726	Class A
UNMK SO 15726	PEG DP 26281	ob25	28°02'00"	A DP 45312	2.70	A SO 15726	Class A
PEG DP 26281	UNMK 1 DP 534147	ob17	28°09'00"	A DP 26281	18.94	C	Class A

# Mark and Vector

Survey Number DP 534147

Meridional Circuit Mount Pleasant 2000

From	To	Code	Bearing	Adpt Surv	Distance	Adpt Surv	Class
UNMK 1 DP 534147	PEG DP 26281	ob31	28°09'00"	A DP 26281	12.22	C	Class A
PEG DP 26281	PEG VIII DP 26281	ob18	28°09'00"	A DP 26281	64.78	A DP 26281	Class A
IT 1 DP 534147	IS 5 DP 534147	ob28	313°38'00"	M	26.13	M	
IT 1 DP 534147	PEG 1 DP 534147	ob29	342°46'00"	M	9.55	M	
IS 3 DP 534147	IS 4 DP 534147	ob37	51°06'00"	M	27.25	M	
IS IV DP 26281	IS 5 DP 534147	ob13	70°58'00"	A DP 26281	13.94	A DP 26281	
SS 71 SO 19371	PEG 1 DP 534147	ob1	57°47'00"	A SO 15726	11.89	A SO 15726	
IS 5 DP 534147	PEG 1 DP 534147	ob14	118°59'00"	C	18.39	C	Class A
PEG B10 DP 322603	IS 5 DP 534147	ob10	208°51'00"	A DP 322603	27.26	C	Class A
PEG 1 DP 534147	PEG XII SO 15726	ob19	28°02'00"	A DP 45312	26.45	A DP 45312	Class A
PEG DP 1378	IS 4 DP 534147	ob16	131°25'30"	C	18.52	C	Class A
IS 4 DP 534147	UNMK 1 DP 534147	ob40	131°25'30"	C	0.30	C	Class A
IS 3 DP 534147	PEG B10 DP 322603	ob38	271°34'00"	M	7.88	M	
IS 3 DP 534147	PEG XII SO 15726	ob39	141°01'00"	M	11.91	M	
IS 3 DP 534147	UNMK 1 DP 534147	ob33	51°46'00"	C	27.29	C	
IS 3 DP 534147	IT XI SO 15726	ob34	154°46'00"	M	14.56	M	

Mark Name	Description
IR I DP 322603	d0.03
IR VI DP 322603	d0.01
IS 1 DP 495035	flush
IS 2 DP 534147	d0.05
IS 3 DP 534147	d0.1
IS 5 DP 534147	PEG DP 26281 reinstated
IT 1 DP 534147	d0.15
IT XI SO 15726	d0.25
MN 71A SO 19371	MN flush in top of kerb.
PEG 1 DP 534147	PEG DP 26281 reinstated
SS 71 SO 19371	capped

\*\*\* End of Report \*\*\*

# Schedule / Memorandum

Land Registration District

**Canterbury**

Survey Number

**LT 534147**

Territorial Authority (the Council)

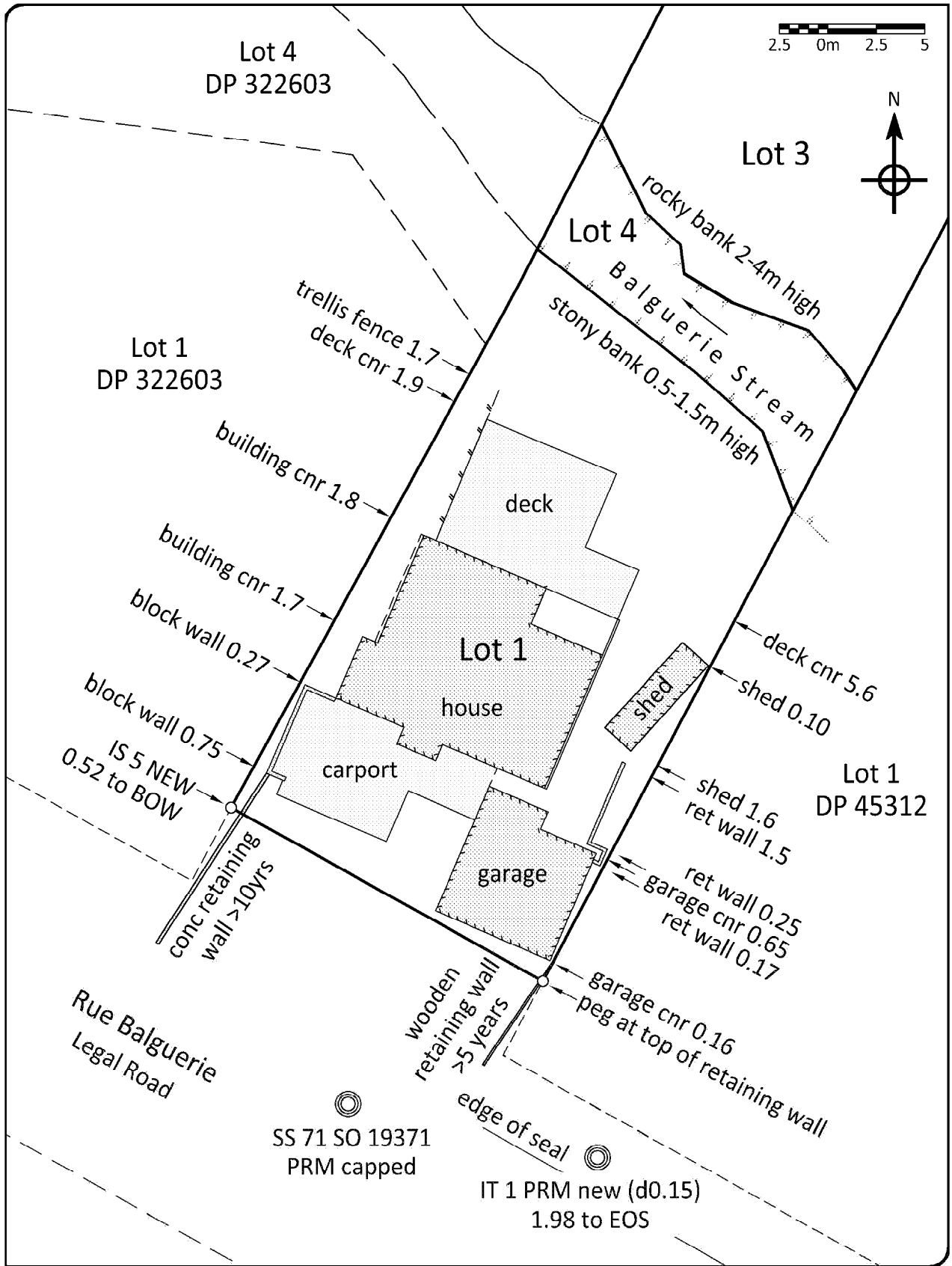
**Christchurch City**

## **Amalgamation Conditions**

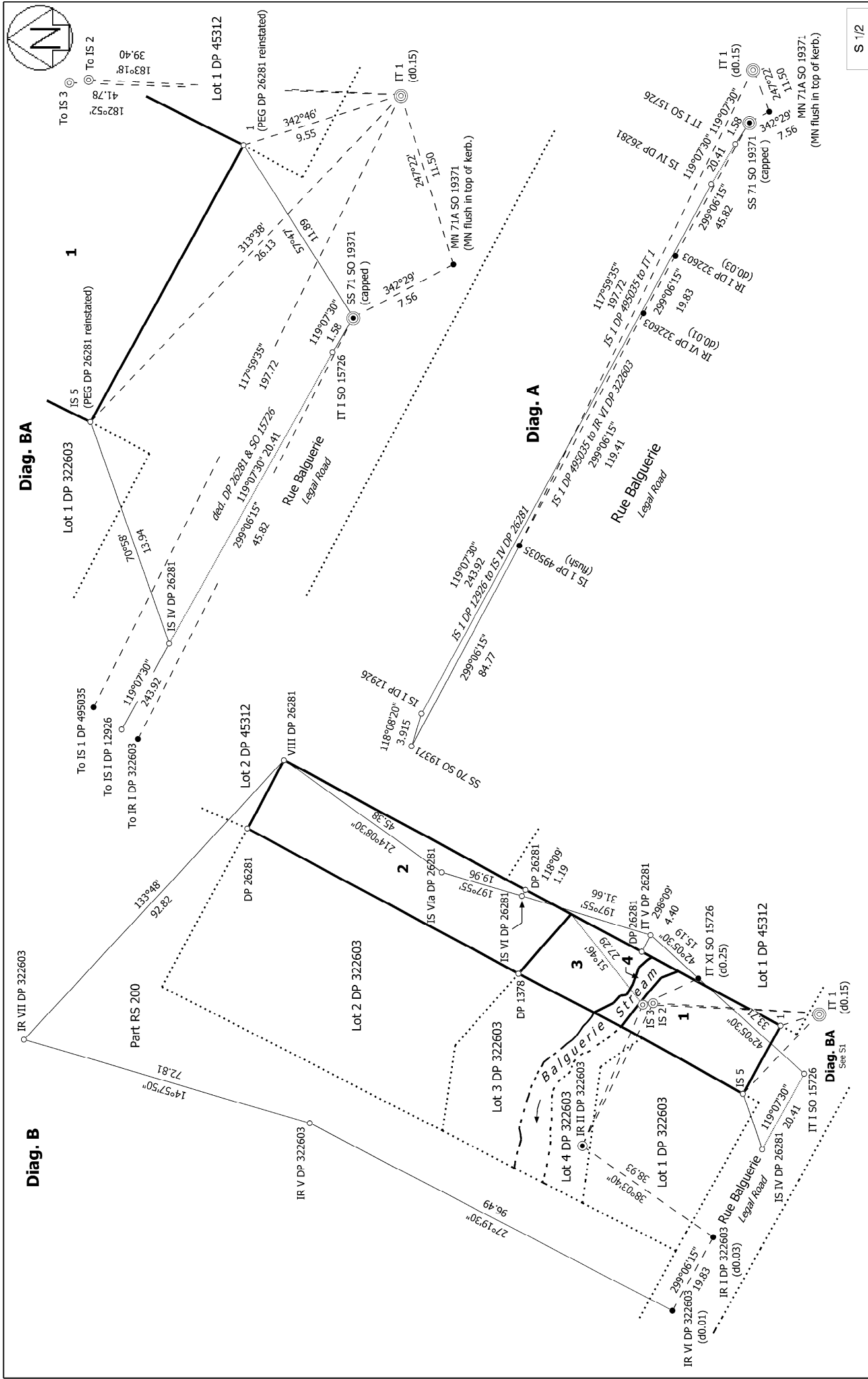
Last Edited: 19 Mar 2019 14:42:12

That Lot 2 hereon be amalgamated with Lot 2 DP 322603 (RT 90212) and one Record of Title be issued for both parcels.  
LINZ request No: 1558993

# Occupation Diagram



	www.foxsurvey.co.nz 0800 FOX SURVEY P.O.Box 895 CHRISTCHURCH	<h2>Occupation Diagram</h2> <h3>DP 534147</h3>	Scale 1:200	Job No 4198D
			Designed DHP	Rev. B
			Drawn DHP	
			Date March 2019	



S 1/2

Land District: Canterbury  
 Digitally Generated Plan  
 Generated on: 13/06/2020 2:49pm Page 7 of 9

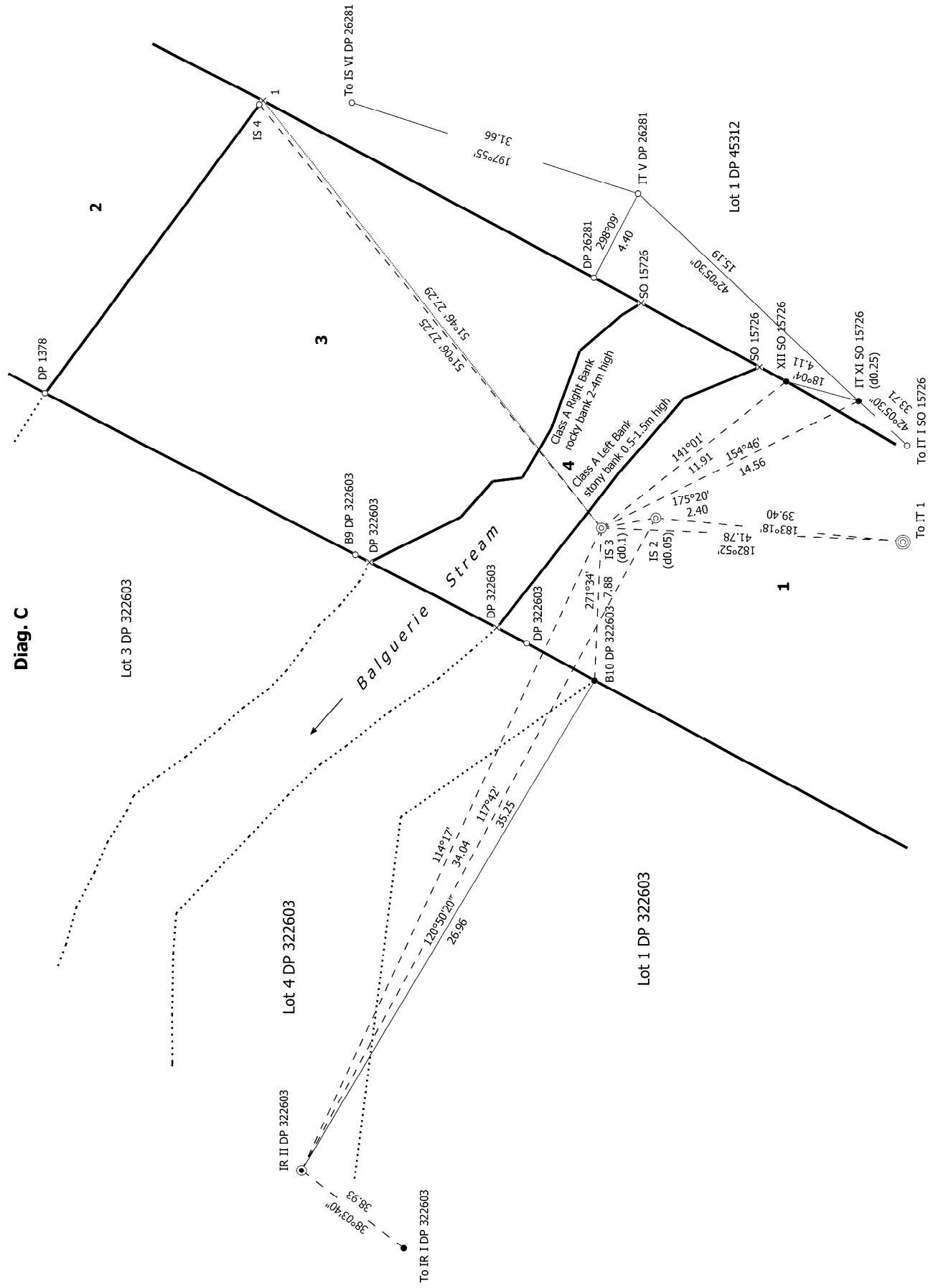
**Lots 1-4 being a Subdivision of Lot 1 DP 26281**

Surveyor: Alexander David John Liggitt  
 Firm: Fox and Associates  
 Survey Date: 7/03/2019

CSD Plan  
 DP 534147  
 Deposited on: 5/06/2020



Diag. C



S 2/2

Land District: Canterbury

Digitally Generated Plan

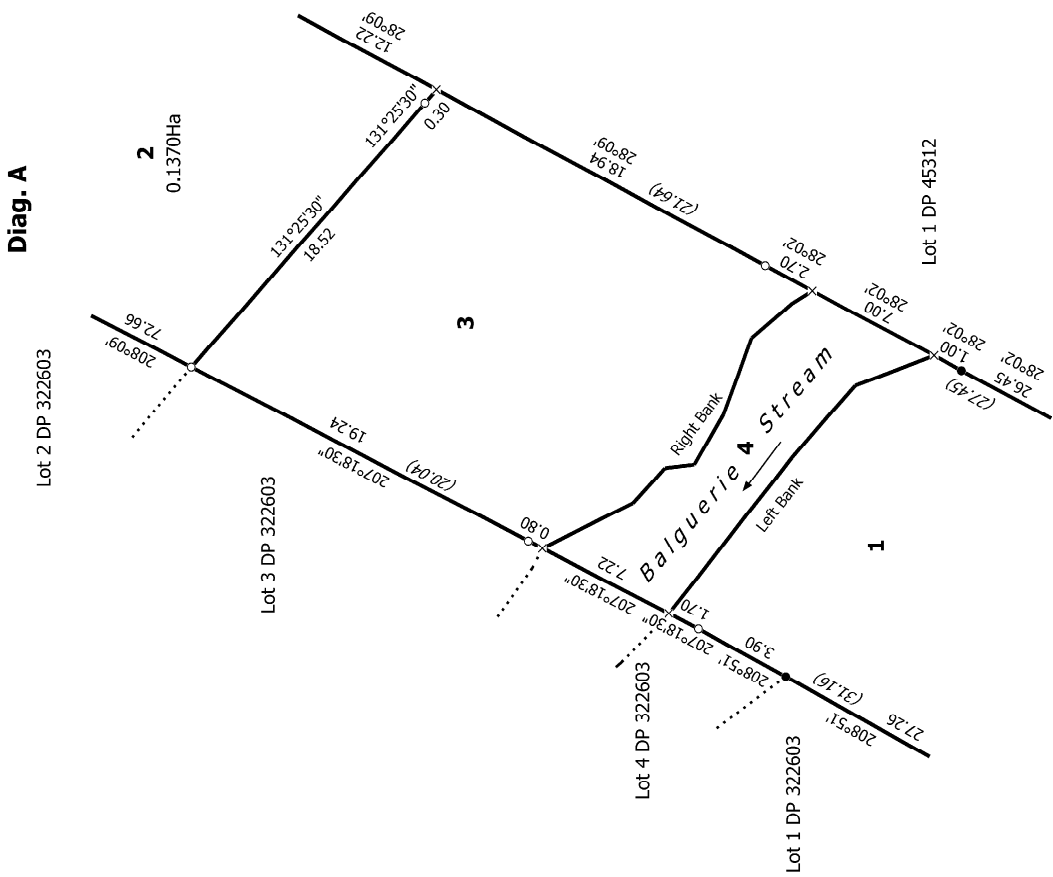
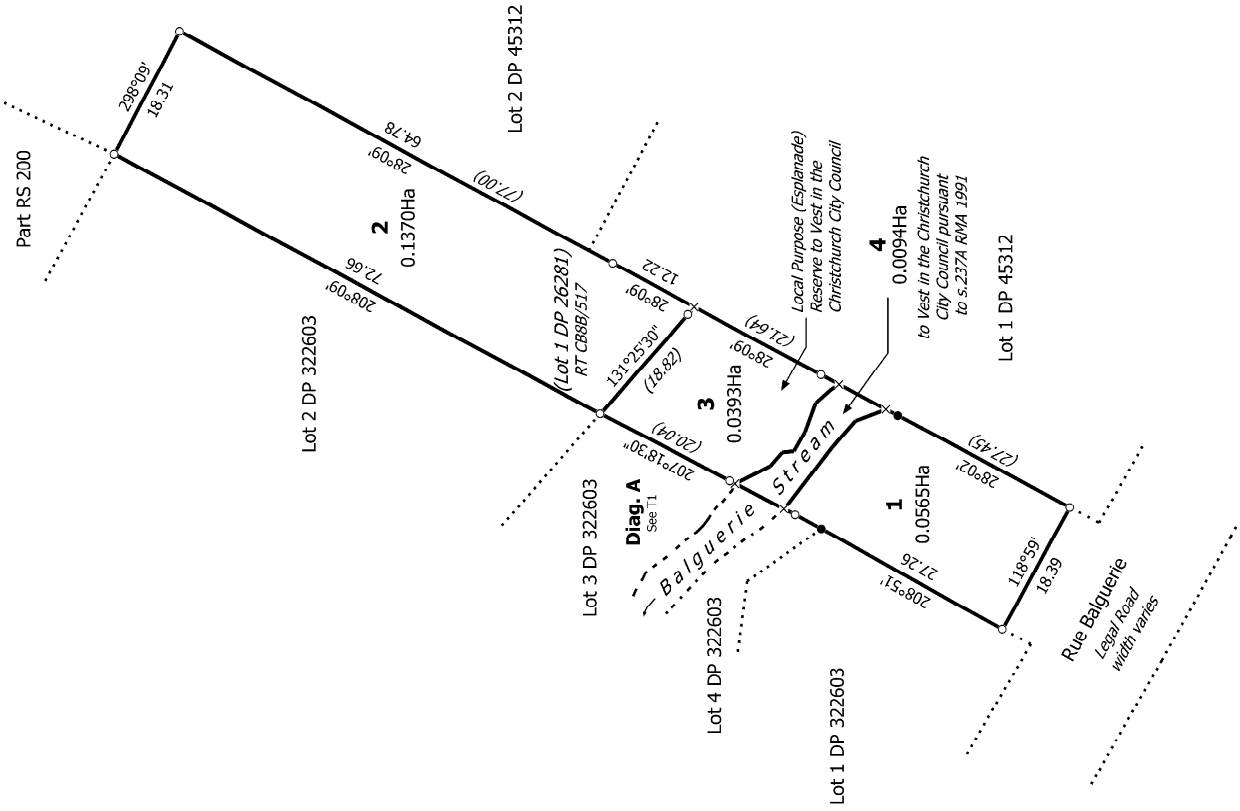
Generated on: 13/06/2020 2:49pm Page 6 of 9

Lots 1-4 being a Subdivision of Lot 1 DP 26281

Surveyor: Alexander David John Liggett  
Firm: Fox and Associates  
Survey Date: 7/03/2019

CSD Plan  
DP 534147  
Deposited on: 5/06/2020





NOTE: Lot 2 hereon is subject to an amalgamation condition. Refer to schedule for details.

T 1/1

Land District: Canterbury <b>Digitally Generated Plan</b> <small>Generated on: 13/06/2020 2:49pm Page 9 of 9</small>	<b>Lots 1-4 being a Subdivision of Lot 1 DP 26281</b>	Surveyor: Alexander David John Liggett Firm: Fox and Associates Survey Date: 7/03/2019	<b>CSD Plan          DP 534147</b> Deposited on: 5/06/2020
--	---	--	---